

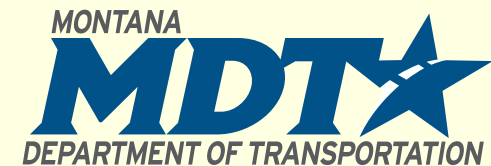
Transportation Update

Revenue and Transportation Committee



Director Jim Lynch
Montana Department
of Transportation

September 18, 2009
Helena, Montana



Topics

American Recovery & Reinvestment Act (ARRA)

- **Overview**
- **Project Delivery Status**
- **Recovery Impact on Highway Performance**
- **Transit**

Reauthorization

- **Beyond SAFETEA-LU**

Transportation Update

ARRA

Funding & Projects

ARRA Transportation Funding Overview

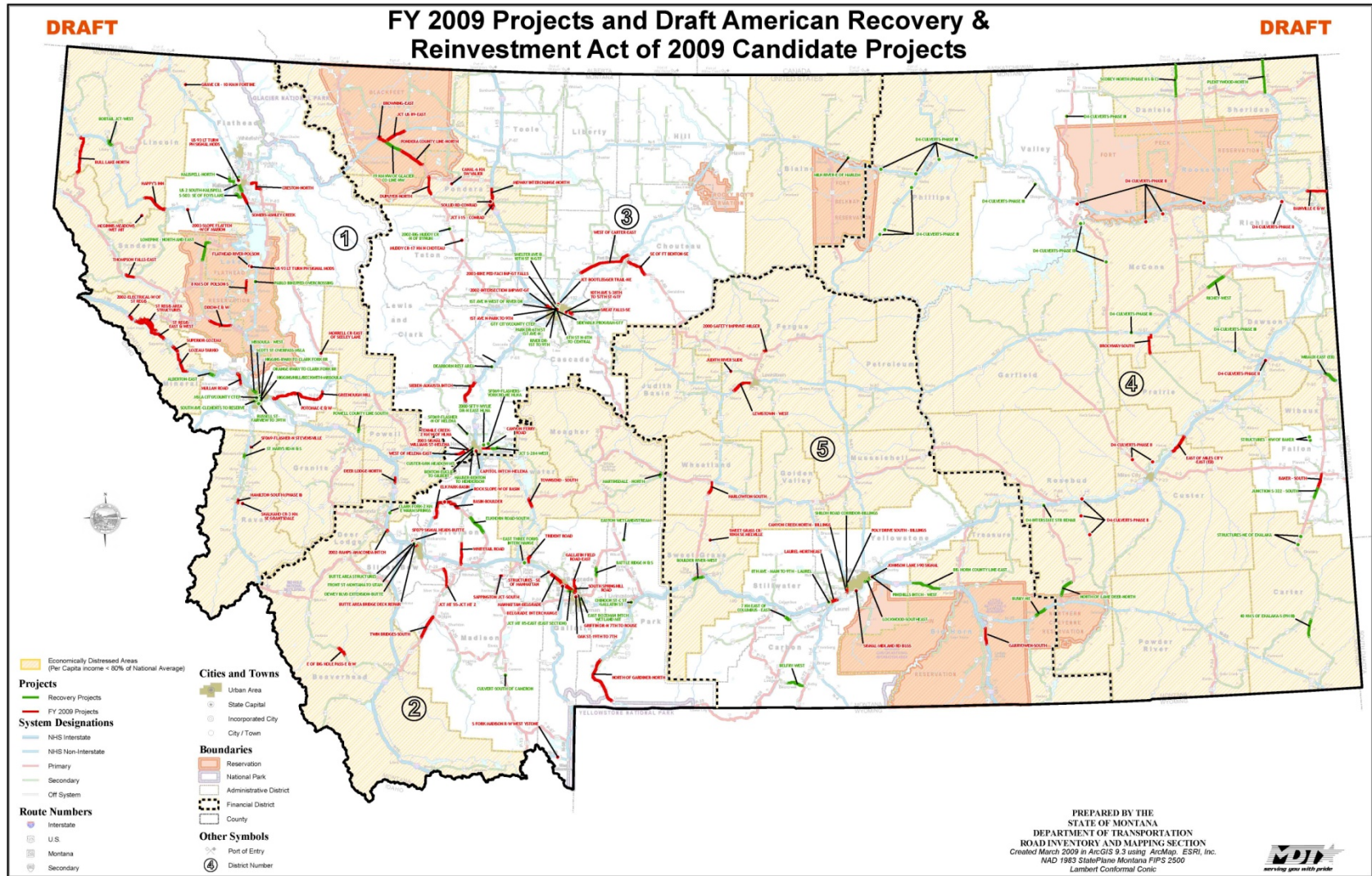
Program Funding Under ARRA

<http://www.mdt.mt.gov/recovery/>

SECTION	FUNDING TYPE	NATIONAL \$ AMOUNT PER ACT	ESTIMATED \$ FOR MONTANA
Highways	Formula Grants	\$27.5 billion	\$211 million
Highways	Discretionary - TIGER	\$1.5 billion	Competitive *
Transit	Urbanized Areas Billings: Great Falls: Missoula:	\$5.97 billion	\$4.3 million - \$1.9 million - \$1.2 million - \$1.2 million
Transit	Rural General Public	\$760 million	\$11.3 million

* TIGER Grants – MDT has submitted applications for 9 Montana projects that will compete nationally for these funds. USDOT will announce project recipients by February 17, 2010.

FY 2009 & Candidate ARRA Projects



ARRA Projects Delivery Status

ARRA Highway Infrastructure

As of 09/15/2009

ARRA Highway Infrastructure Funding = \$211,000,000

Commission Approved Highway Infrastructure Projects = 69

ARRA Projects with Construction Contracts:	Number of Projects	Total Obligation
Out-to-Bid (Advertised)	61	\$132,240,038
Awarded	56	\$119,638,838
Have reached Notice-to-Proceed Date*	49	\$90,049,972
<i>*Total Notice-to-Proceeds issued is 56</i>		
Total ARRA Expenditures to Date:		\$15,878,516

Prime Contractors – 27

Sub-contractors - 71

Missoula District ARRA Projects

Latest Project Tracking Information (as of September 15, 2009)

District	Project ID	Location	Project Scope	Commission Approved Cost Estimate	Awarded CN + CE	Notice to Proceed
1	CM-STPU 8109(1)	SCOTT ST OVERPASS-MSLA	BRIDGE REHAB	\$2,600,000	\$2,013,827	7/13/2009
1	STPS 260-1(4)0	BOBTAIL JCT-WEST	CHIP SEAL	\$200,000	\$186,403	7/6/2009
1	STPS 424-1(7)1	KALISPELL-NORTH	CHIP SEAL	\$300,000	\$186,479	6/29/2009
1	STPS 503-1(9)5	S-503: SE OF FOYS LAKE	CHIP SEAL	\$200,000	\$154,610	6/29/2009
1	STPS 271-1(9)5	POWELL COUNTY LINE-SOUTH	CHIP SEAL	\$100,000	\$111,165	6/29/2009
1	STPS 507-1(7)0	ALBERTON-EAST	Mill/Fill	\$800,000	\$460,118	6/22/2009
1	SFCX 32758(10)	Missoula - West	Seal and Cover	\$300,000	\$260,040	7/6/2009
1	STPU-CM-STPE 8117(3)	HIGGINS/HILL/BECKWITH-MISSOULA	INT UPGRADE/SIGNALS	\$900,000	\$689,800	06/15/09
1	UPP 8120(4)	SOUTH AVE-CLEMENTS TO RESERVE	MILL & FILL	\$1,100,000	\$616,301	6/1/2009
1	UPP 8105(13)	RUSSELL ST - FAIRVIEW TO 39TH	MILL & FILL	\$200,000	\$150,745	6/1/2009
1	UPP 8113(5)	HIGGINS-BWAY TO CLARK FORK BR	MILL & FILL	\$200,000	\$119,570	6/1/2009
1	UPP 8107(18)	ORANGE-BWAY TO CLARK FORK BR	MILL & FILL	\$100,000	\$76,845	6/1/2009
1	NH 7-1(118)64	ST MARYS RD - N&S	RECONSTRUCTION	\$7,800,000	\$5,493,307	8/12/2009
1	CTEP	MSLA City/County CTEP	BIKE/PED FACILITIES	\$2,400,000		
1	NH 5-2(151)52	PABLO BIKE/PED OVERCROSSING	BIKE/PED FACILITIES	\$2,300,000		
1	STPP-F 36-1(4)26	LONEPINE - NORTH AND EAST*	RECONSTRUCTION	\$12,500,000		
1	MT-ARRA 15(91)	US 2 South – Kalispell*	RECONSTRUCTION	\$16,400,000		
Total District 1				\$48,400,000	\$10,519,210	

* Project will also receive earmark funding.

Butte District ARRA Projects

Latest Project Tracking Information (as of September 15, 2009)

District	Project ID	Location	Project Scope	Commission Approved Cost Estimate	Awarded CN + CE	Notice to Proceed
2	STPP 86-1(39)16	BATTLE RIDGE-N&S	CHIP SEAL	\$1,200,000	\$899,351	7/6/2009
2	UPP 7406(6)	CHINOOK ST-C ST-GALLATIN ST	MILL & FILL	\$200,000	\$225,500	6/15/2009
2	STPX 16(57)	EAST BOZEMAN INTCH WETLAND MIT	WETLANDS	\$300,000	\$232,865	7/6/2009
2	STPX 34(14)	EASTON WETLAND/STREAM	WETLANDS	\$400,000	\$346,767	7/20/2009
2	UPP 1806(7)	FRONT ST-MONTANA TO UTAH	MILL & FILL	\$700,000	\$1,380,530	6/22/2009
2	BR 9012(12)	CLARK FORK-2 KM E WARM SPRINGS	BRIDGE REPLACEMENT	\$600,000		
2	STPS 235-1(8)0	JCT MT 85 - EAST East Section	RECONSTRUCTION	\$6,500,000	\$5,181,000	10/5/2009
2	IM-IBRC 15-2(75)125	BUTTE AREA STRUCTURES	BRIDGE REPLACEMENT	\$9,700,000		
2	STPU-CM 1899(17)	DEWY BLVD EXTENSION - BUTTE	RECONSTRUCTION	\$3,000,000		
2	IM-STPHS 90-6(84)278	EAST THREE FORKS INTERCHANGE	SAFETY	\$6,200,000	\$3,553,000	10/5/2009
2	STPP 13-1(44)37	CULVERT-SOUTH OF CAMERON	CULVERT	\$200,000	\$311,300	10/5/2009
2	STPP 69-1(9)22	ELKHORN ROAD-SOUTH	REHAB - MAJOR	\$9,500,000		
2	STPS 294-1(7)27	MARTINSDALE - NORTH	RECONSTRUCTION	\$5,200,000		
Total District 2				\$43,700,000	\$12,130,313	

Great Falls District ARRA Projects

Latest Project Tracking Information (as of September 15, 2009)

District	Project ID	Location	Project Scope	Commission Approved Cost Estimate	Awarded CN + CE	Notice to Proceed
3	BR 9003(30)	MILK RIVER-E OF HARLEM	BRIDGE REPLACEMENT	\$2,700,000	\$2,402,036	6/22/2009
3	STPHS 3-2(29)55	2002-BIG MUDDY CR-N OF BYNUM	BRIDGE REPLACEMENT	\$3,100,000	\$2,728,753	7/20/2009
3	UPP 5805(12)	BENTON-EUCLID TO GILBERT	MILL & FILL	\$400,000	\$242,918	6/29/2009
3	UPP 5210(17)	1ST AVE N-WEST OF RIVER DR	MILL & FILL	\$500,000	\$355,857	7/20/2009
3	UPP 5822(1)	HAUSER-BENTON TO HENDERSON	OVERLAY	\$600,000	\$383,990	6/29/2009
3	SFCU 5208(1)	Park Dr. - 6th St. - 1st Ave. N	OVERLAY	\$300,000	\$355,008	7/20/2009
3	UPP 5205(23)	RIVER DR-1ST TO 9TH	OVERLAY	\$600,000	\$598,282	7/20/2009
3	SFCU 5209(4)	6th Street N - 8th to Central	OVERLAY	\$300,000	\$327,122	7/20/2009
3	STPP 3-4(8)101	19 KM NW OF GLACIER CO LINE-NW	REHAB - MAJOR	\$12,800,000	\$9,884,850	7/6/2009
3	HSIP 279-1(12)4	SF069-FLASHER-N OF HELENA	SAFETY	\$50,000	\$26,363	8/3/2009
3	HSIP 280-1(18)5	SF069-FLASHERS-YORK RD-NE HLNA	SAFETY	\$50,000	\$30,098	8/3/2009
3	UPP 5802(11)	CUSTER-GRN MEADOW-MT	MILL & FILL	\$700,000	\$675,340	7/6/2009
3	STPS 430-1(5)1	JCT S-284-WEST	RECONSTRUCTION	\$13,500,000	\$8,712,000	10/5/2009
3	NH 101-1(3)2	SMELTER AVE & 10TH ST N-GTF	RECONSTRUCTION	\$2,700,000		
3	IM 15-4(88)240	DEARBORN REST AREA	REST AREA	\$4,700,000	\$4,018,300	8/14/2009
3	STPHS 25(37)	2000-SFTY-WYLIE DR-N EAST HLNA	SAFETY	\$1,700,000	\$929,590	8/3/2009
3	CM 5299(80)	SIDEWALK PROGRAM-GTF PHASE 2&3	ADA SIDEWALK RAMPS	\$1,900,000	\$1,457,005	6/22/2009
3	STPE 5299(66)	GTF City/County CTEP	BIKE/PED	\$1,000,000		
Total District 3				\$47,600,000	\$33,127,512	

Glendive ARRA Projects

Latest Project Tracking Information (as of September 15, 2009)

District	Project ID	Location	Project Scope	Commission Approved Cost Estimate	Awarded CN + CE	Notice to Proceed
4	IM 94-3(56)88	D4-INTERSTATE STR REHAB	BRIDGE REHAB	\$4,000,000	\$5,356,486	8/3/2009
4	BR 27-1(8)2	STRUCTURES-NE OF EKALAKA	BRIDGE REPLACEMENT	\$2,200,000	\$2,301,902	8/3/2009
4	BR 9013(14)	STRUCTURES - NW OF BAKER	BRIDGE REPLACEMENT	\$800,000	\$684,245	8/3/2009
4	STPP 32-2(13)52	SCOBNEY - NORTH (PHASE II)	CHIP SEAL	\$400,000	\$518,694	6/15/2009
4	IM 94-7(27)244	WIBAUX-EAST (EB)	MILL & FILL	\$1,600,000	\$1,319,731	8/17/2009
4	NH 34-1(8)0	PLENTYWOOD-NORTH	OVERLAY	\$4,100,000	\$3,022,926	8/17/2009
4	STPP 51-2(3)19	RICHEY-WEST	OVERLAY	\$2,900,000	\$2,306,303	6/22/2009
4	STPP 39-1(38)4	NORTH OF LAME DEER-NORTH	OVERLAY - COLD MILL	\$1,900,000	\$1,905,486	6/8/2009
4	MT-PLH 323-1(27)25	40 KM S OF EKALAKA-S (PH III)*	RECONSTRUCTION	\$15,800,000	\$8,652,601	7/6/2009
4	STPP 27-2(19)24	JUNCTION S-322-SOUTH	RECONSTRUCTION	\$7,400,000	\$7,255,566	9/21/2009
4	NH-STPS-STPP 0002(837)	D4-CULVERTS-PHASE III	CULVERT	\$4,900,000		
Total District 4				\$46,000,000	\$33,323,940	

* Project will also receive earmark funding.

Billings District ARRA Projects

Latest Project Tracking Information (as of September 15, 2009)

District	Project ID	Location	Project Scope	Commission Approved Cost Estimate	Awarded CN + CE	Notice to Proceed
5	IM 90-7(88)364	BOULDER RIVER-WEST	MILL & FILL	\$4,400,000	\$3,205,584	8/17/2009
5	IM 90-9(94)473	BIG HORN COUNTY LINE-EAST	OVERLAY	\$5,900,000	\$7,936,247	6/1/2009
5	STPS 308-1(25)7	BELFRY-WEST	OVERLAY	\$1,800,000	\$1,444,840	7/6/2009
5	UPP 1028(3)	LOCKWOOD-SOUTHEAST	OVERLAY	\$500,000	\$556,542	6/1/2009
5	IM 90-8(156)453	PINEHILLS INTCH - WEST	OVERLAY - COLD MILL	\$2,200,000	\$1,229,277	8/5/2009
5	NH 37-1(32)27	BUSBY-NE	REHAB - MAJOR	\$3,300,000	\$2,287,646	7/20/2009
5	STPU 1031(2)	Canyon Creek	RECONSTRUCTION	\$13,000,000	\$9,301,727	6/1/2009
5	STPU 1031(2)	SHILOH ROAD CORRIDOR-BILLINGS*	RECONSTRUCTION	\$9,500,000		
5	STPS 421-1(3)6	7 KM EAST OF COLUMBUS - EAST	RECONSTRUCTION	\$4,800,000	\$4,576,000	10/5/2009
5	STPU 6905(1)	8TH AVE - MAIN TO 9TH - LAUREL	RECONSTRUCTION	\$3,600,000		
Total District 5				\$49,000,000	\$30,537,863	

* Project will also receive earmark funding.

ARRA Enhancement Projects

Latest Project Tracking Information (as of September 15, 2009)

MDT Administered Projects					
District	Project ID	Location	Project Scope	Commission Cost Estimate	Estimated Let Date
1	NH 5-2(151)52	PABLO BIKE/PED OVERCROSSING	BIKE/PED FACILITIES	\$2,300,000	Dec-09
3	CM 5299(49)	SIDEWALK PROGRAM -GTF PHASE 2	ADA SIDEWALK RAMPS	\$1,061,000	LET
3	ARRA 5299(81)	SIDEWALK PROGRAM -GTF PHASE 3	ADA SIDEWALK RAMPS	\$436,000	LET
Sub Total				\$3,797,000	

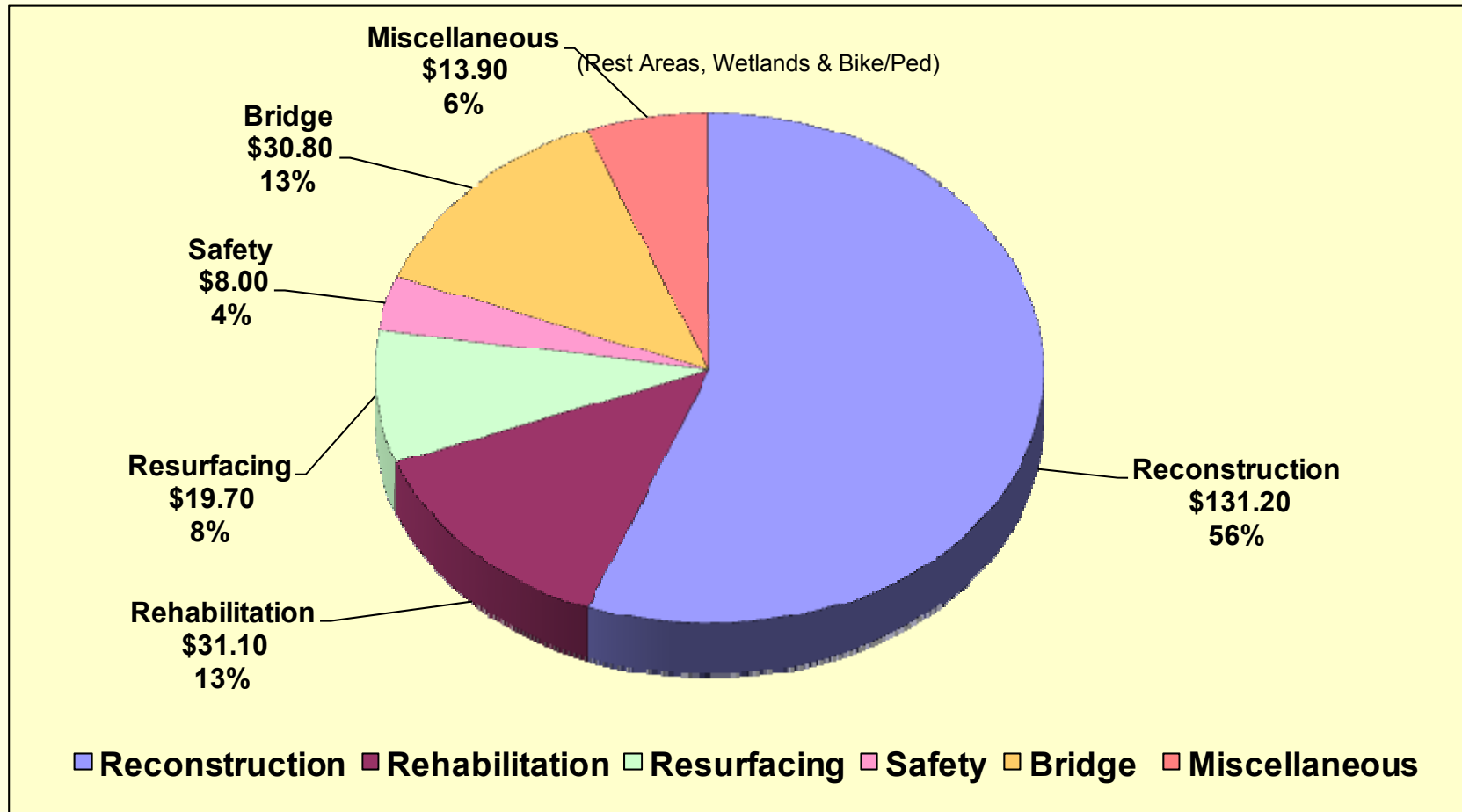
Missoula Community Projects					
District	Project ID	Location	Project Scope	Commission Cost Estimate	Estimated Let Date
1	MSLA CITY/COUNTY CTEP	N. HIGGINS	BIKE/PED FACILITIES	\$1,250,000	Dec-09
1	MSLA CITY/COUNTY CTEP	MULLAN ROAD	BIKE/PED FACILITIES	\$600,000	Dec-09
1	MSLA CITY/COUNTY CTEP	RATTLESNAKE GATEWAY/GREENOUGH	BIKE/PED FACILITIES	\$200,000	Dec-09
1	MSLA CITY/COUNTY CTEP	SIDEWALK RAMPS - MISSOULA	ADA SIDEWALK RAMPS	\$350,000	Dec-09
Sub Total				\$2,400,000	

Great Falls Community Projects					
District	Project ID	Location	Project Scope	Commission Cost Estimate	Estimated Let Date
3	GTF CITY/COUNTY CTEP	BAY DRIVE BIKE/PED PATH- GTF	BIKE/PED FACILITIES	\$260,000	Sep-09
3	GTF CITY/COUNTY CTEP	BAY DRIVE BIKE/PED PATH II - GTF	BIKE/PED FACILITIES	\$740,000	Nov-09
Sub Total				\$1,000,000	

ARRA Enhancement Project Totals	\$7,197,000
<u>Required for ARRA</u>	<u>\$6,353,800</u>
MDT will exceed the ARRA Required by	\$843,200

Highway Infrastructure Project Mix

ARRA Project Mix by Type of Work*



* Based on March 19, 2009 Transportation Commission Approved list

Transportation Issues

ARRA

Impact on Highway Performance

Recovery Impact on Highways

MDT's Performance Programming Process

A process to develop an optimal funding allocation and investment plan based on strategic highway system performance goals and the continual measurement of progress toward these goals.

Recovery Impact on Highways

Performance Programming – Goals

❑ Pavement Condition (Interstate, Primary, NHS System)

- Performance Goal: Maintain average ride in the desirable (or superior) range with less than 3% of the miles in unsatisfactory condition.

Note: Ride is defined as the quality (smoothness) of the ride as perceived by the highway user.

❑ Bridge Condition

- Performance Goal: Reduce the number of functionally obsolete and structurally deficient bridges on the state's highway system.

❑ Congestion

- Interstate: Maintain Level of Service at "B" or Above
- NHS: Maintain Level of Service at "C" or Above
- Primary: Maintain Level of Service at "C" or Above

Note: A driver experiences noticeable discomfort when experiencing conditions below Level of Service "C".

❑ Safety

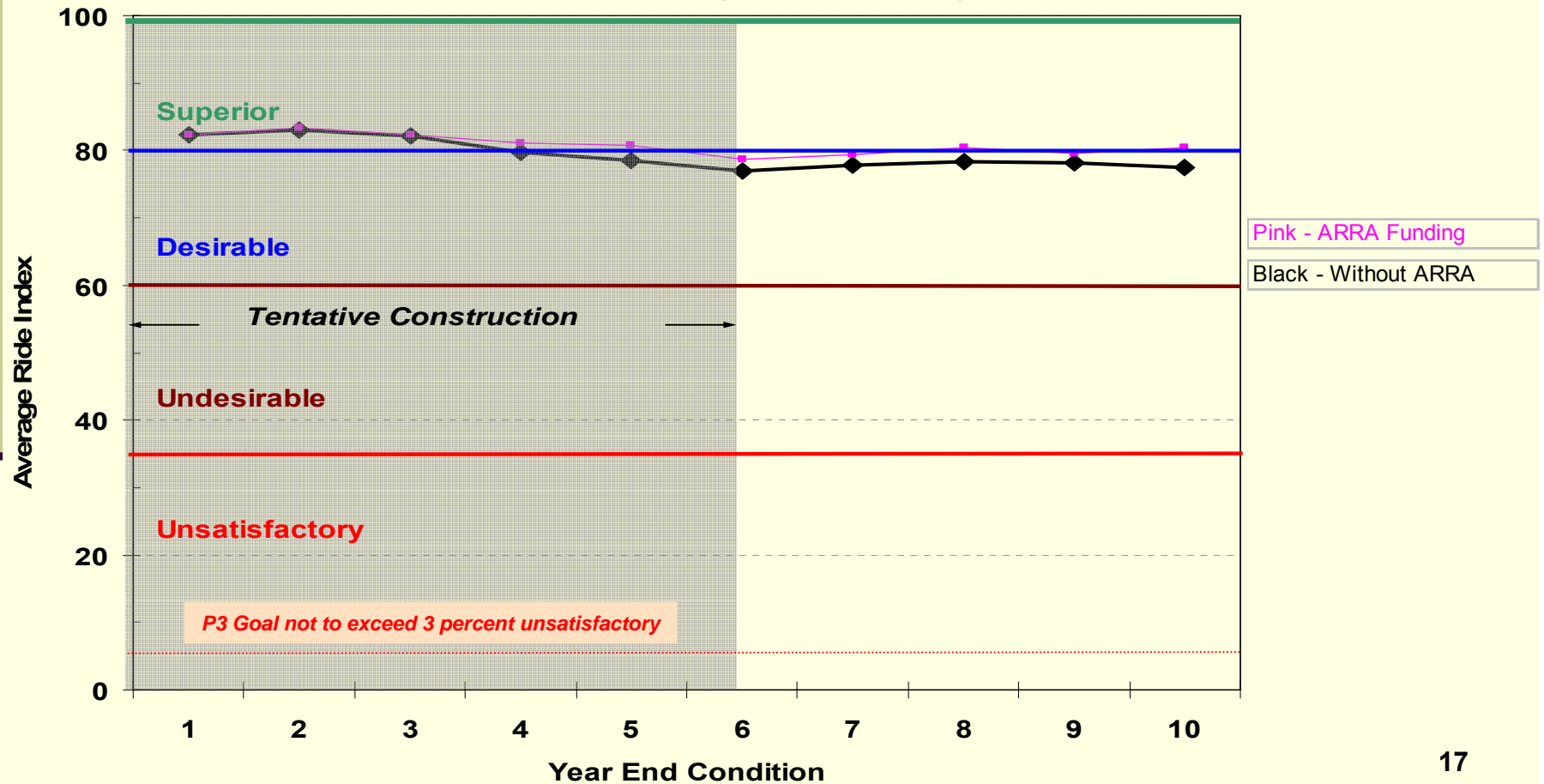
- Performance Goals: Numerous – Outlined in Montana's Comprehensive Highway Safety Plan

Recovery Impact on Highways

Interstate System - Pavement Condition

System Performance Increases with ARRA Dollars and Lower Bid Prices!

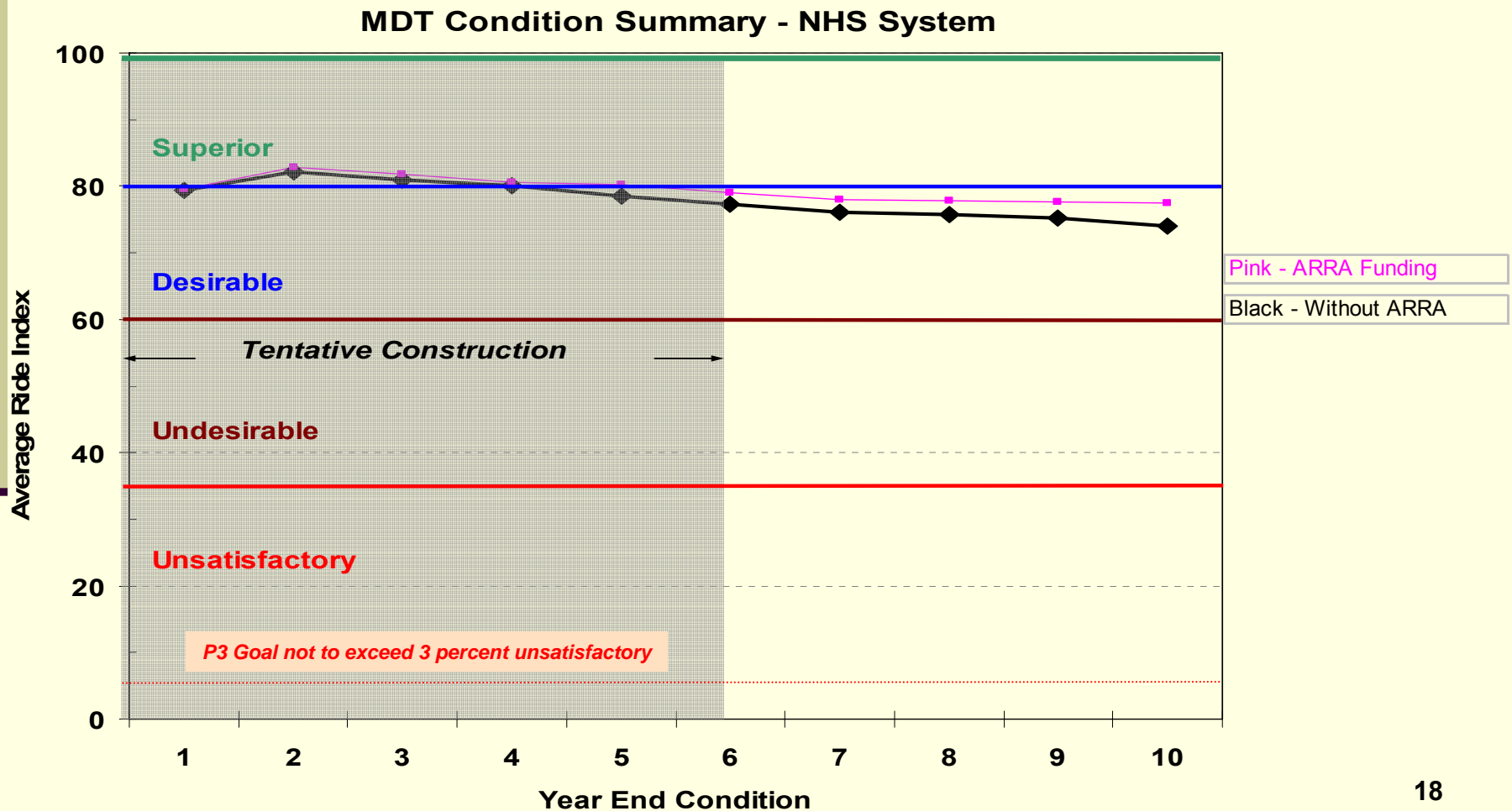
MDT Condition Summary - Interstate System



Recovery Impact on Highways

NHS System – Pavement Condition

System Performance Increases with ARRA Dollars and Lower Bid Prices!

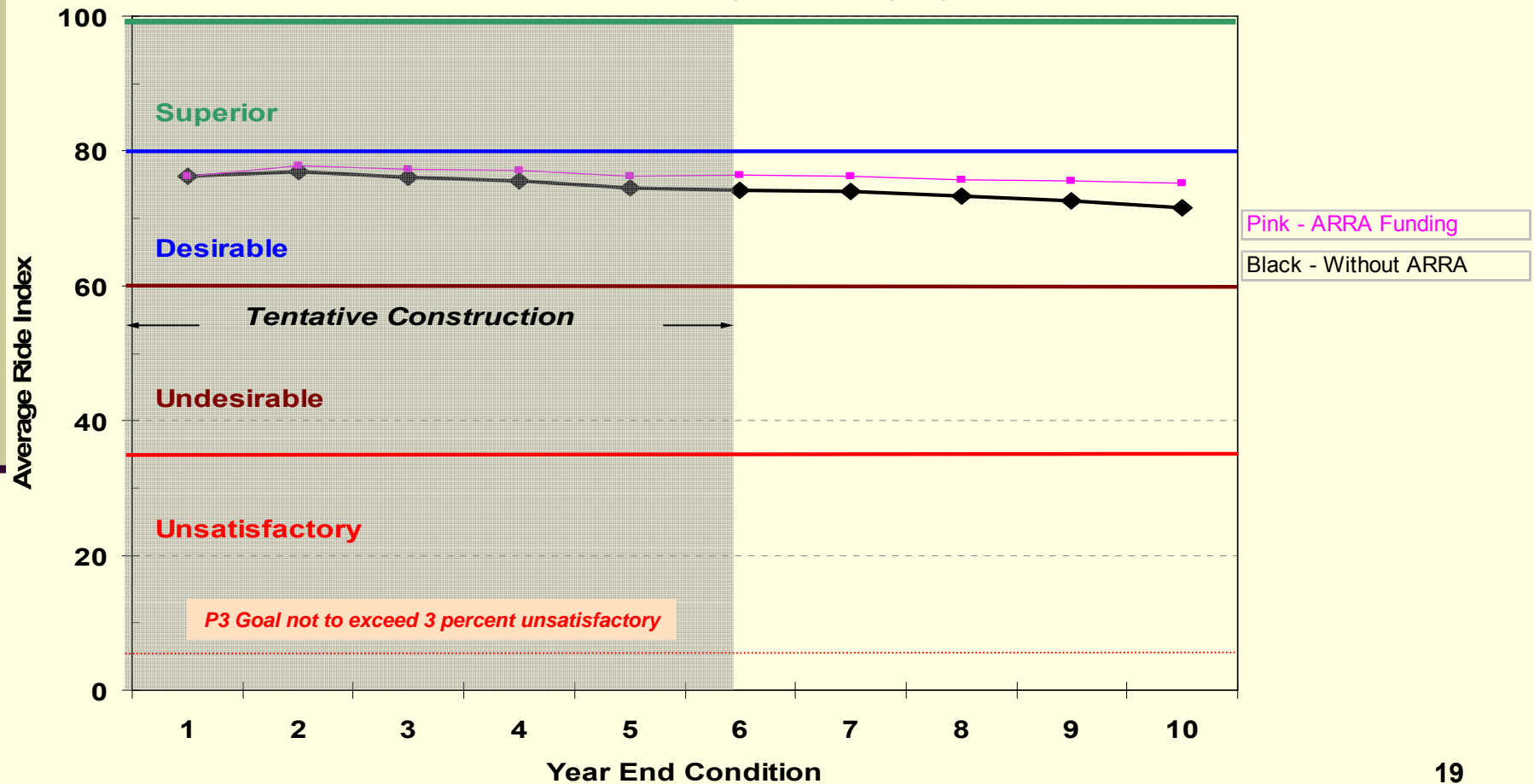


Recovery Impact on Highways

Primary System – Pavement Condition

System Performance Increases with ARRA Dollars and Lower Bid Prices!

MDT Condition Summary - Primary System

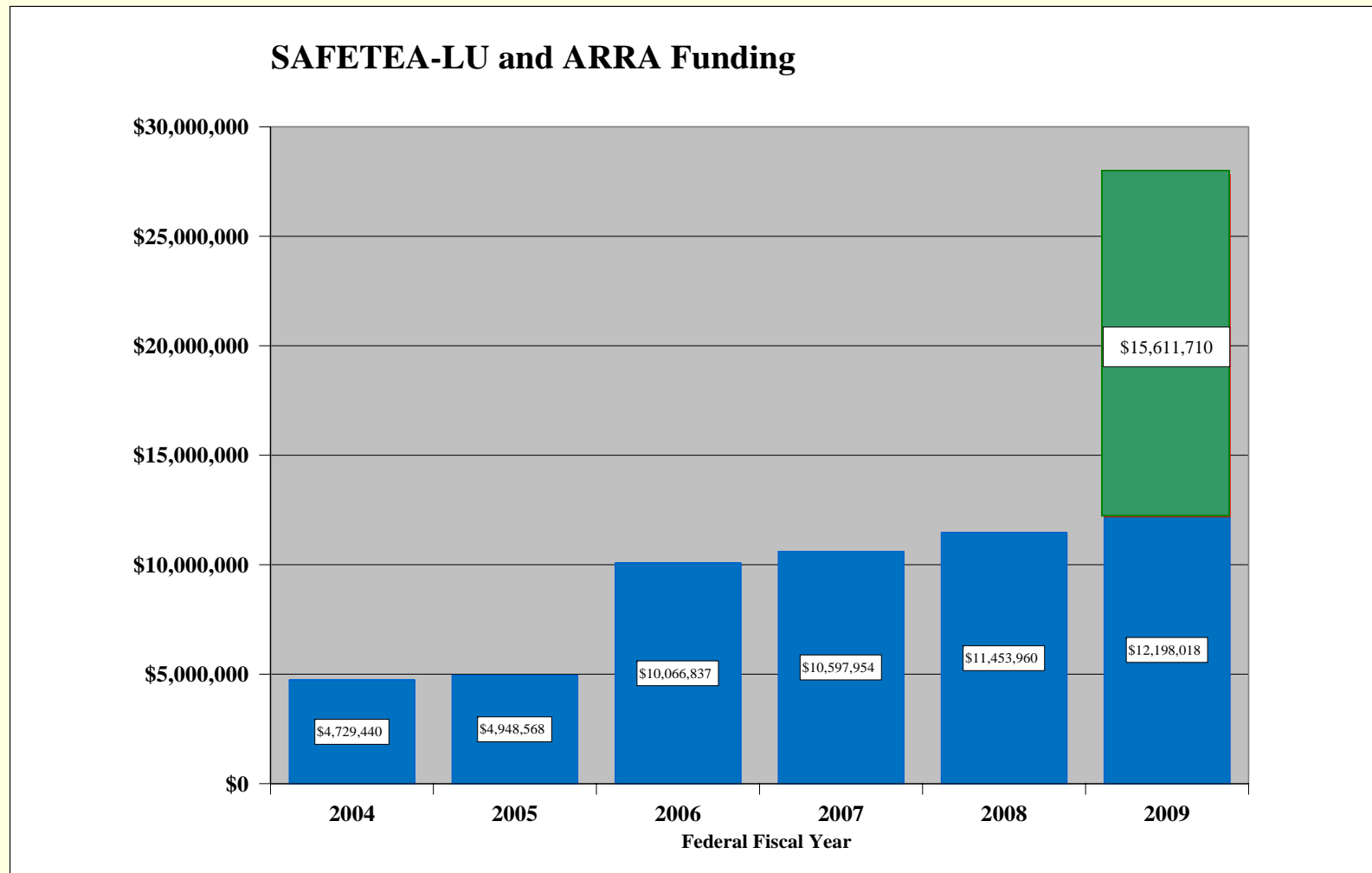


Transportation Issues

ARRA

Impact on Transit

ARRA Impact: Transit



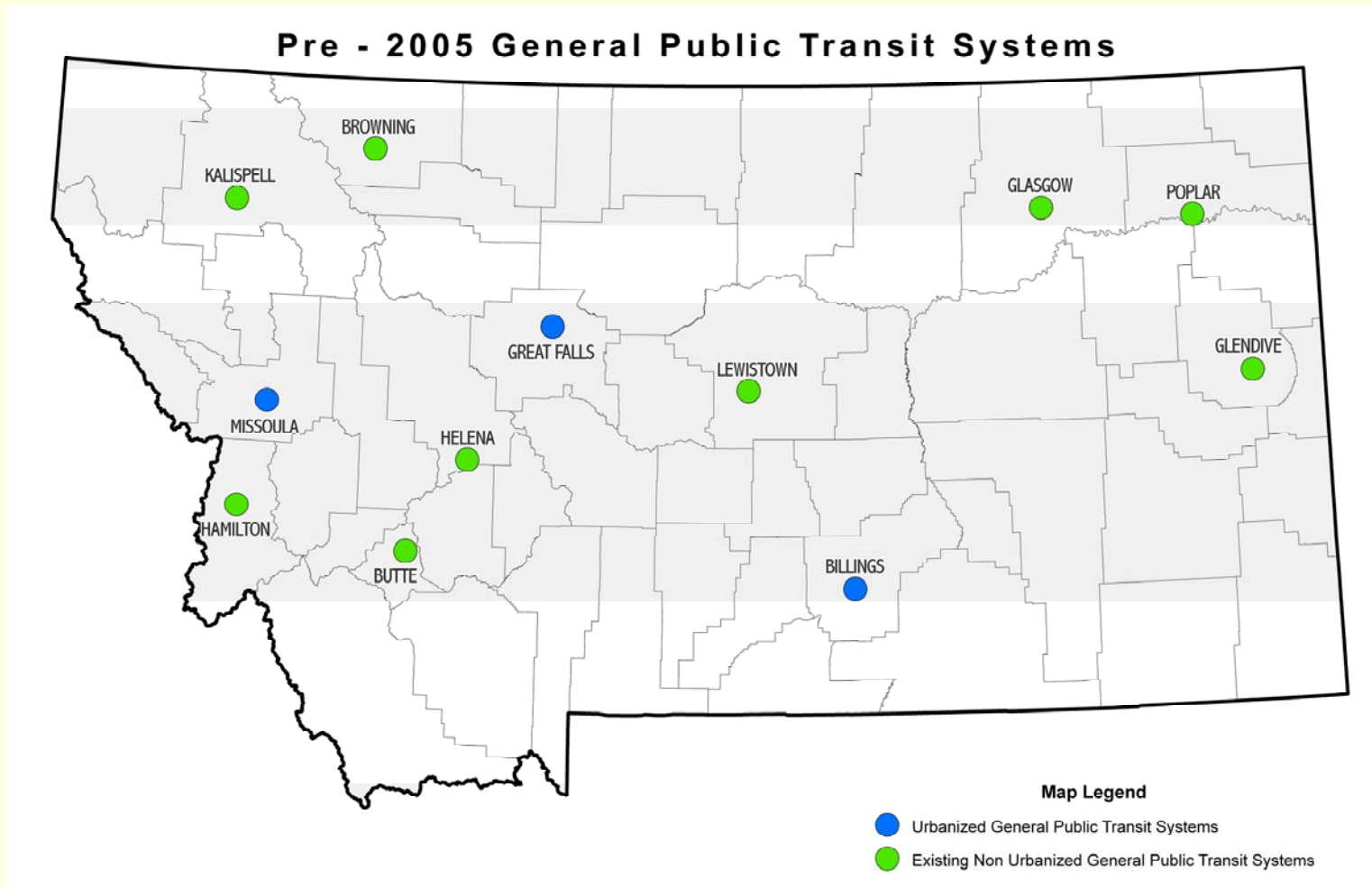
ARRA



SAFETEA LU

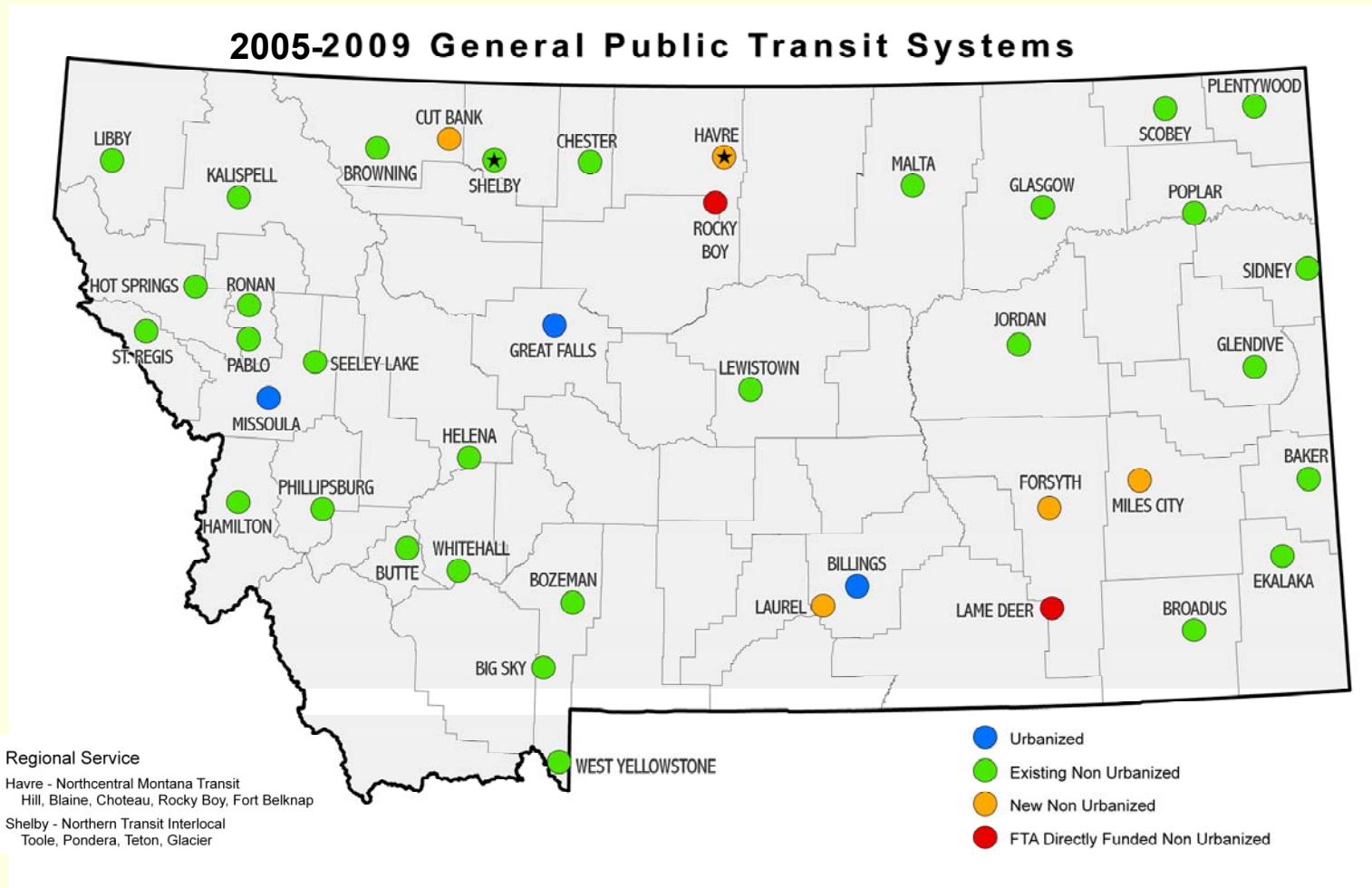
Transit Systems in Montana

Pre-SAFETEA-LU



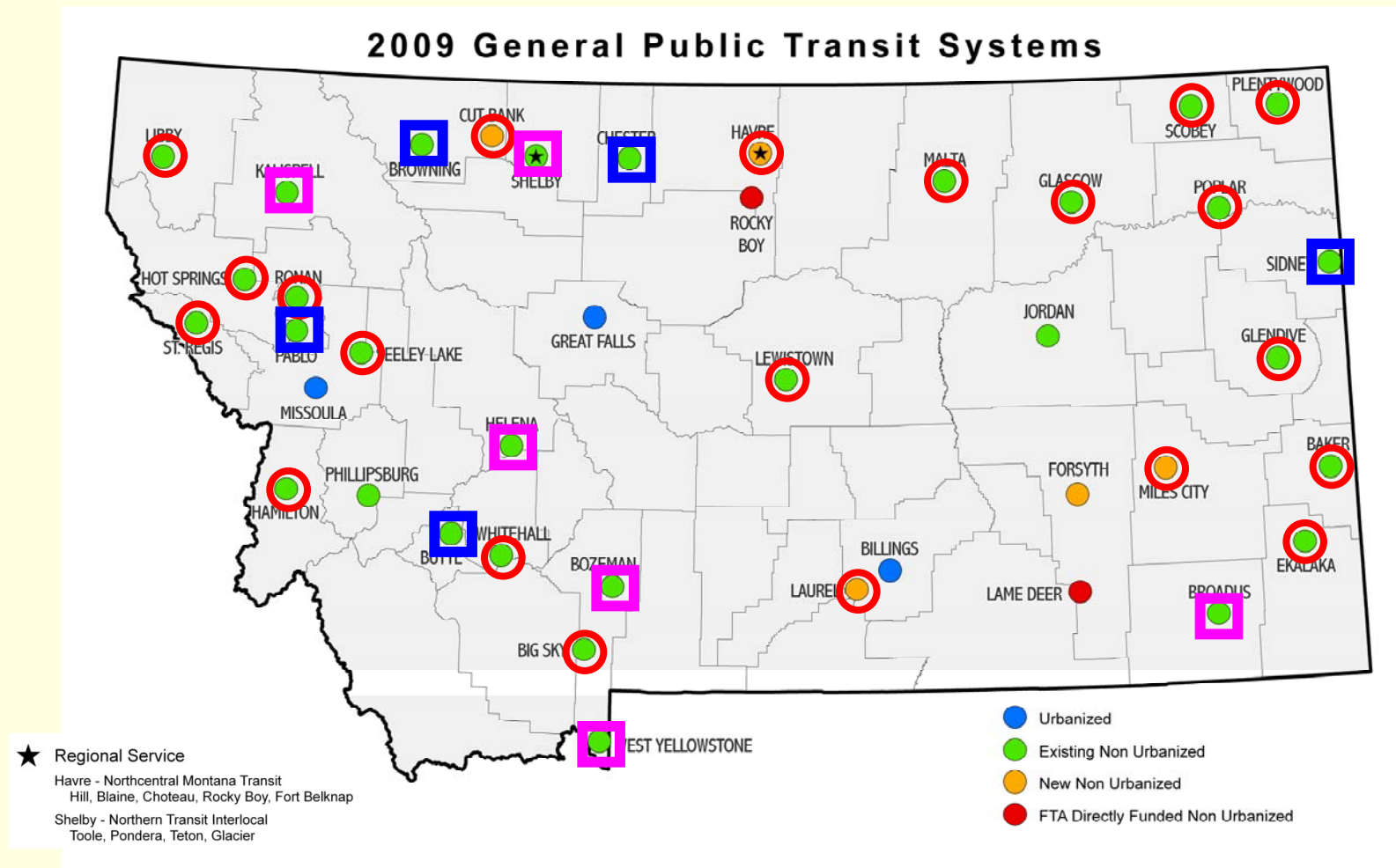
Transit Systems in Montana

2005-2009, Pre-ARRA



Transit Systems in Montana

ARRA Distribution



Transportation Issues

Reauthorization

Reauthorization

Overview:

Awaiting Critical Congressional Actions:

- ❑ Revenue Fix
- ❑ Authorization Act
- ❑ 2010 Appropriations Act

Reauthorization

Revenue Fix & Authorization Act:

- ❑ **SAFETEA-LU expires September 30, 2009**
 - Program extension and funding levels not yet determined
 - Between 6 and 18-month extensions have been discussed by Congress
- ❑ **The Federal Highway Trust fund cannot support a program at the current level of funding**
 - Congress has enacted year end “fixes” to get the program through the last two years of SAFETEA-LU
- ❑ **House has a proposed bill (6-years/\$500 Billion)**
 - Focused on congestion, population & alternative modes
 - Want to get a bill in place – solve the revenue problem later
 - This bill is not good for Montana
- ❑ **No Senate Bill – Yet**
 - Direction to find a revenue fix before entering a long-term authorization
 - Montana typically fares much better in the Senate
 - We prefer a good long term bill rather than a quick bill.

Reauthorization

Montana's Position for next Act:

- ❑ Maximum funding to core programs
- ❑ States rather than USDOT should pick projects
- ❑ No reliance on tolls or Public Private Partnerships
- ❑ Protect Montana's share of at least 0.9758% of Federal formula funds
- ❑ No new designer programs
- ❑ Simplify program delivery

Reauthorization

2010 DOT-HUD Appropriations (H.R. 3288):

TRANSPORTATION INCLUDES:

- ❑ **Similar Funding Levels in both House & Senate Bills :**
 - ❑ \$41.1 Billion for Highways (1% increase over FFY 2009)
 - ❑ Slight increases also for Transit, Safety (NHTSA), and Motor Carriers
 - ❑ \$4.0 Billion General Fund for Highways
 - ❑ House – for High Speed Rail
 - ❑ Senate - \$2.0 Billion for High Speed Rail
 - \$0.9 Million to States thru formula
 - \$1.1 Billion Discretionary Program
 - Remainder to Housing

- ❑ **Senate Bill more favorable for Rural States**
 - ❑ All States receive a share of the General Fund
 - ❑ Discretionary Program with reserve for Rural States
 - ❑ Funding for Essential Air Service and Airport Improvement Programs

- ❑ **Passage not sufficient without authorization of contract authority**

Questions