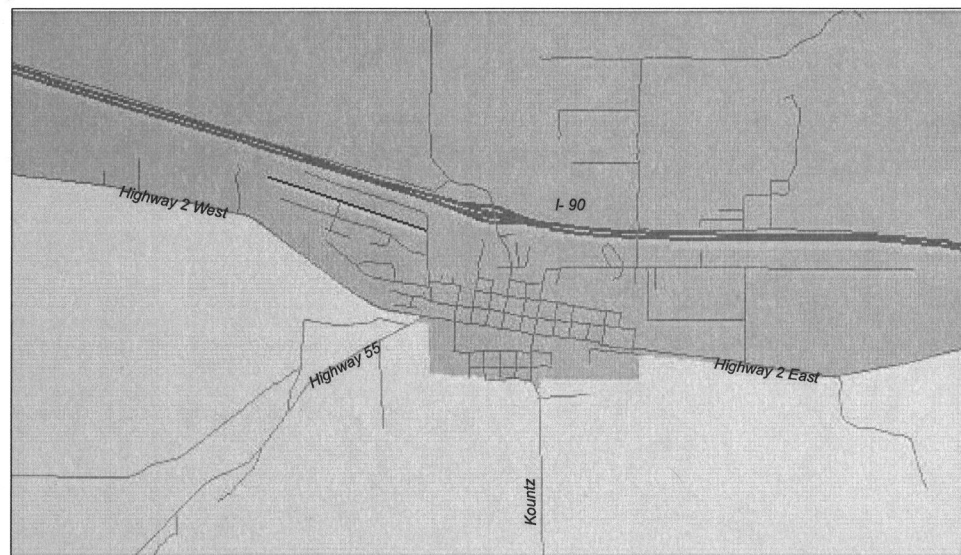
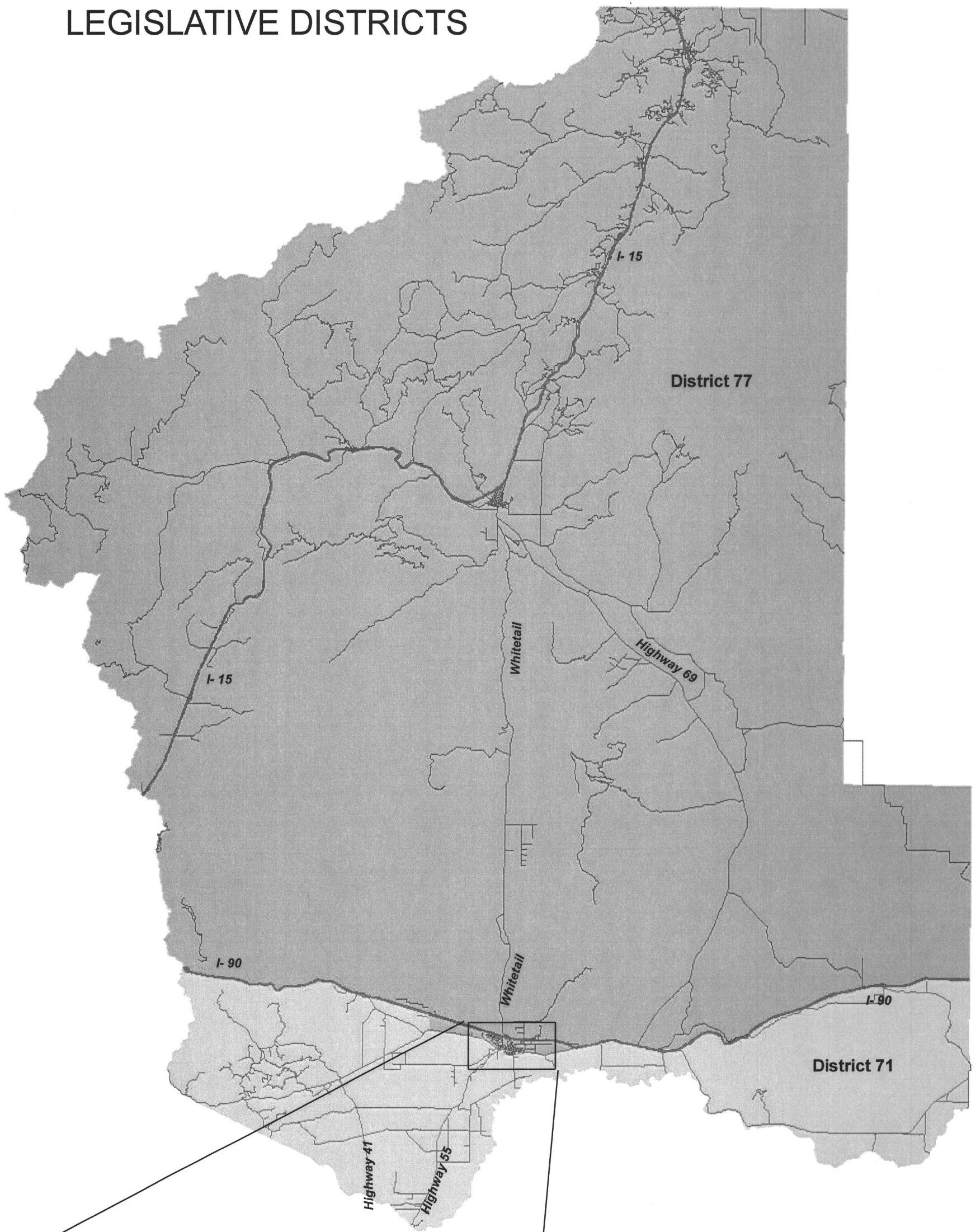
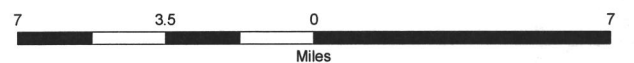
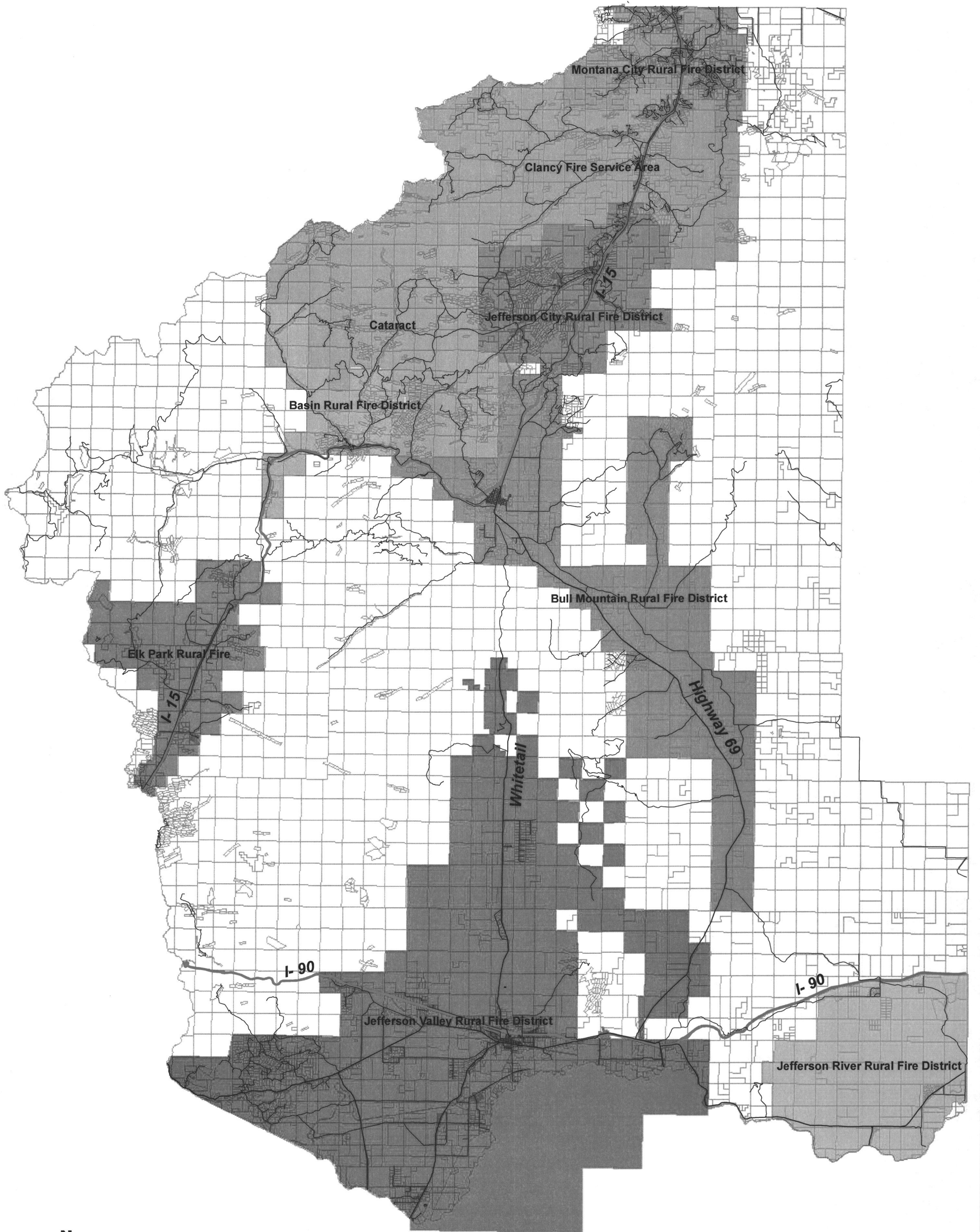


# JEFFERSON COUNTY PROPOSED LEGISLATIVE DISTRICTS



# FIRE DISTRICTS



# SCHOOL DISTRICTS

## Legend

### High School Districts

#### NAME

-  Jefferson #1
-  Whitehall #2

### Elementary Districts

#### NAME

-  Basin #5
-  Boulder #7
-  Cardwell #16
-  Clancy #1
-  Montana City #27
-  Three Forks #26
-  Whitehall #4
-  Willow Creek #17

