

Legislative Redistricting

October 7, 2010

League of Cities and Towns

Rachel Weiss

Joe Kolman

The Basics

- What is redistricting anyway?
- Why do we have to redistrict?
- Who's in charge of redistricting in Montana?
- When will redistricting occur?

What is redistricting anyway?

- Defining our terms
 - Reapportionment” asks how many people should be in each district.
 - “Redistricting” asks where should the lines between districts be drawn.
- 2010 estimated population of Montana = 984,000.
 - Ideal state House district = 9,840 people
 - Ideal state Senate district = 19,600 people

Why do we redistrict?

- Federal and state constitutions
- U.S. Supreme Court rulings in 1960s
 - (“one person, one vote”)

Who's in charge of redistricting?

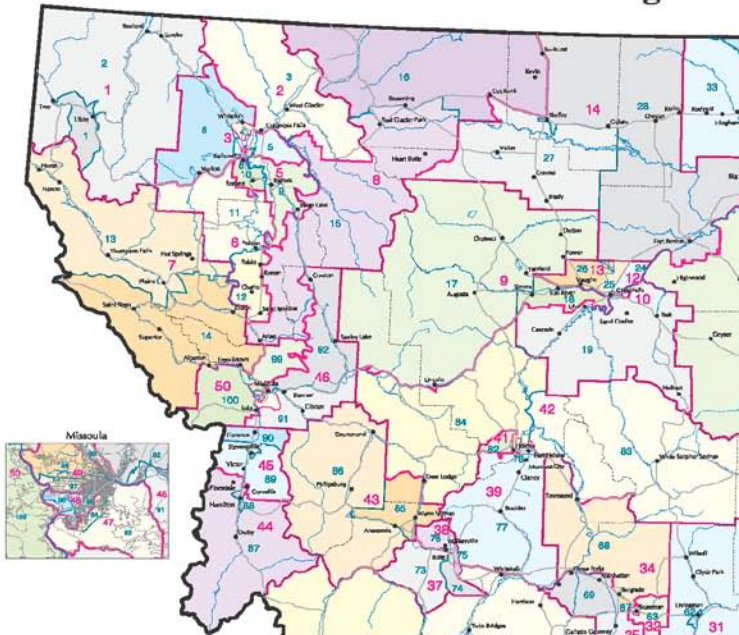
- Autonomous 5-member commission
- Four members appointed by majority and minority leaders of Montana House and Senate
- Fifth member and presiding officer selected by first four (or Supreme Court)
- Full authority for redistricting
 - Legislature can review plan and suggest changes
 - Commission has discretion to make amendments

When will redistricting occur?

- Commissioners appointed by 2009 legislative leaders
- Census data available on or before April 1, 2011
- 90 days for congressional plan
- Present legislative plan to 2013 Legislature
- New legislative districts in effect for 2014 election

The Puzzle and its special rules

Montana Legislati



The Mandatory Rules

Population Equality -- Legislative Districts should be nearly equal in population as practicable.

- * July 2010 state population **ESTIMATE**— 983,932
- * Ideal Population— 9,839 per House District
- * Commission Decision – Plus or minus 3% from ideal
 - * 295 people above or below 9,839

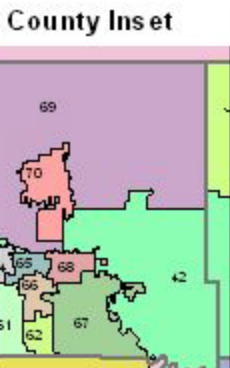
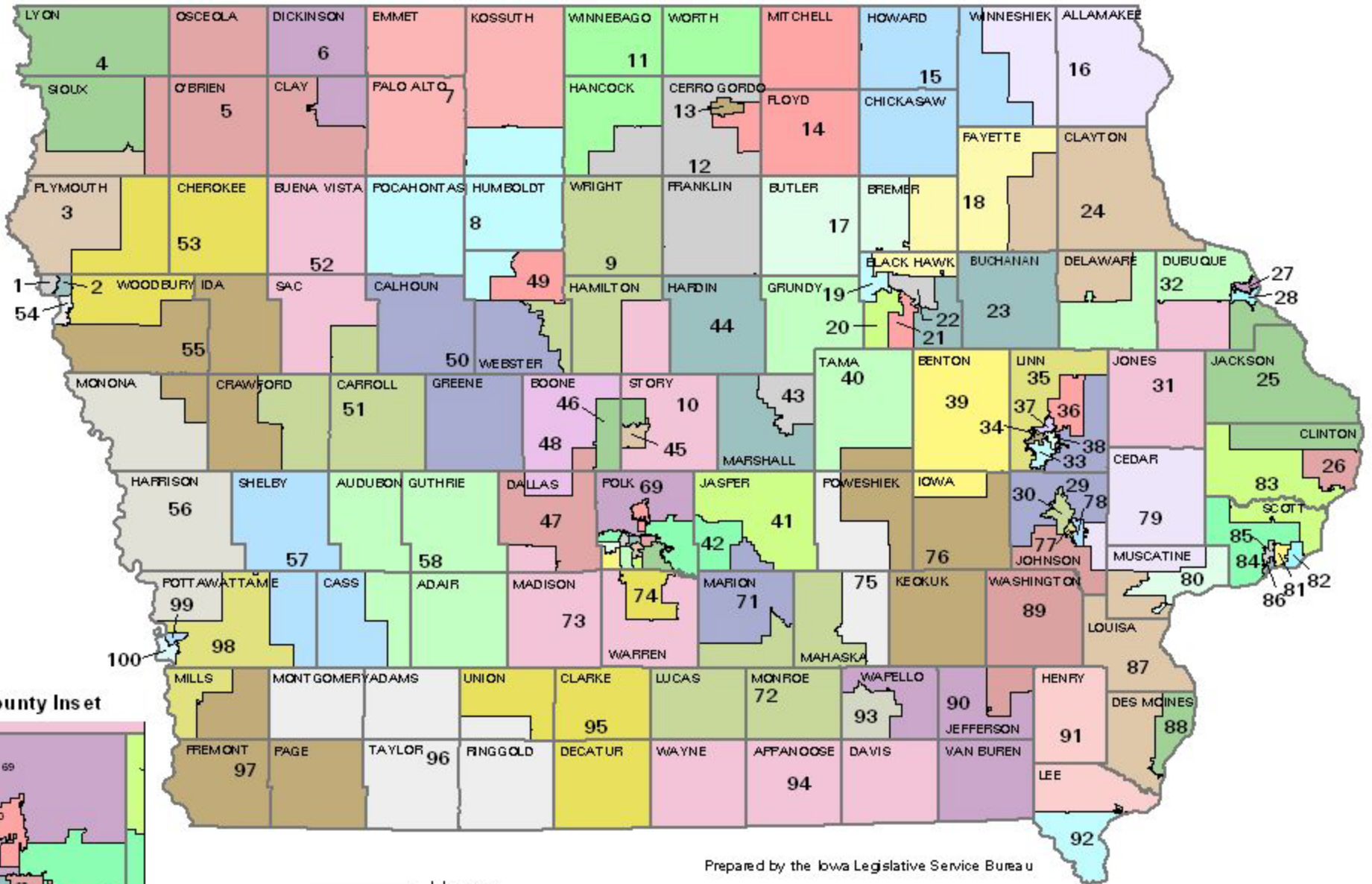
The Mandatory Rules

Compact and Contiguous Districts

- * Looks Matter – You know it when you see it
 - * Commission compactness considerations include:
 - * General appearance;
 - * Functional Compactness:
 - * Travel and Transportation
 - * Communication
 - * Geography

IOWA HOUSE DISTRICTS

Effective Beginning with the Elections in 2002 for the 80th Iowa General Assembly

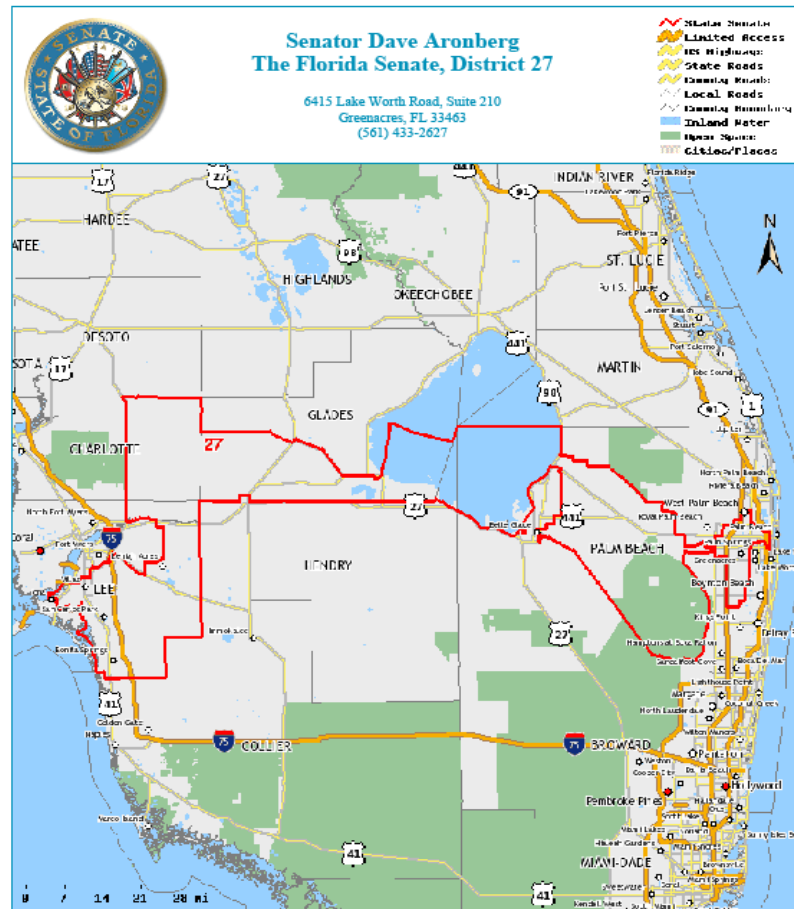


Prepared by the Iowa Legislative Service Bureau

— House
— County

Getting around in Florida SD27

- By car
- By boat
- By foot



Map produced by:
The Florida Senate, Senator Jeff Atwater, President
Suite 400, The Capitol, 404 S. Monroe St., Tallahassee, FL 32399-1100
Phone: (850) 487-5229; Website: <http://www.flsenate.gov>

11/19/2008

The Mandatory Rules

Protect minority voting rights

* No district, plan, or proposal for a plan is acceptable if it affords members of a racial or language minority group “less opportunity than other members of the electorate to participate in the political process and to elect representatives of their choice.”

Race cannot be the predominant factor to which the traditional discretionary criteria are subordinated.

The Discretionary Rules

Following existing political boundaries

- * Counties, cities, school districts, reservations, neighborhoods

Use geographic boundaries from Census

- * Blocks, block groups, tracts

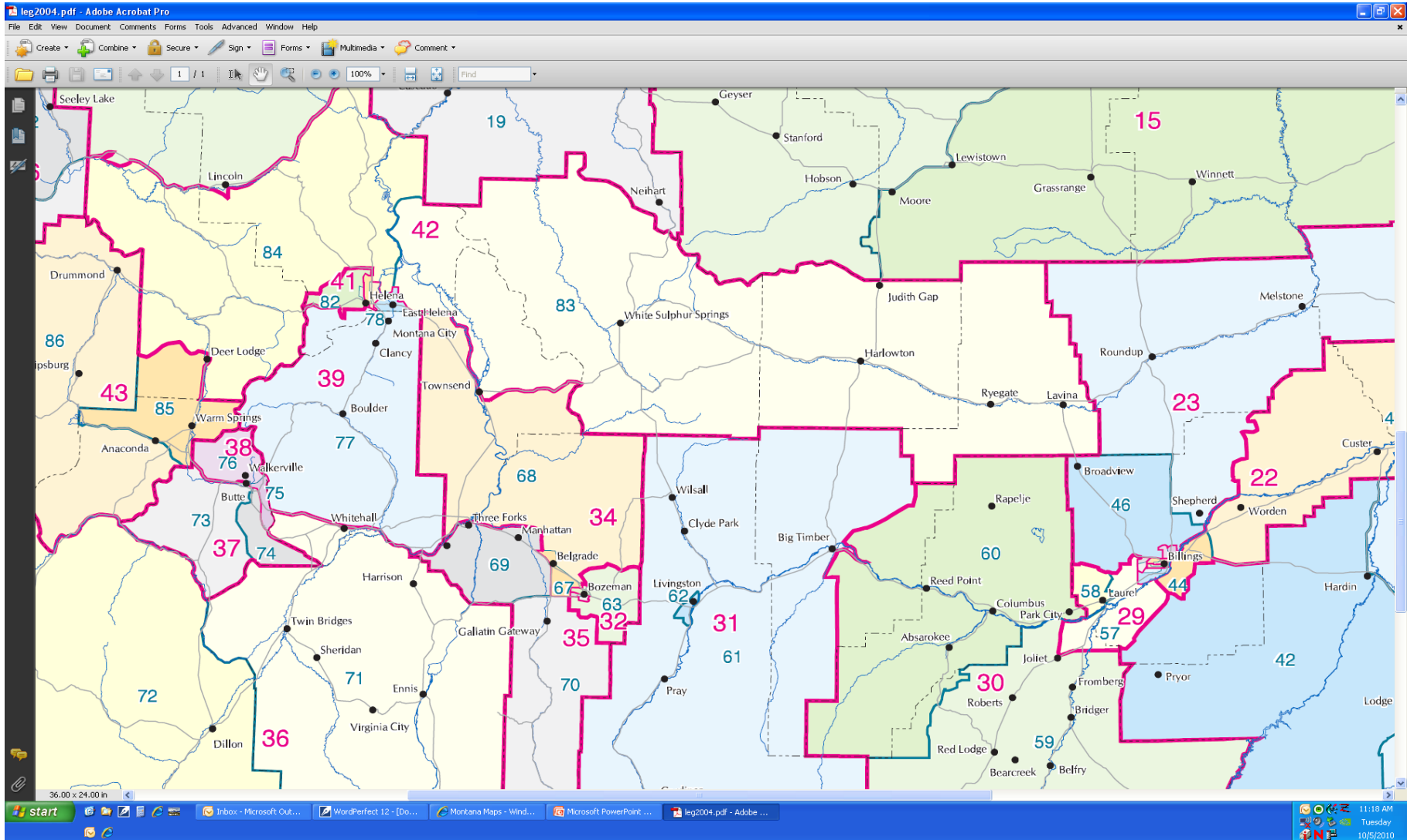
Keep communities of interest intact

- * Reservations, urban/suburban/rural, occupations, trade areas

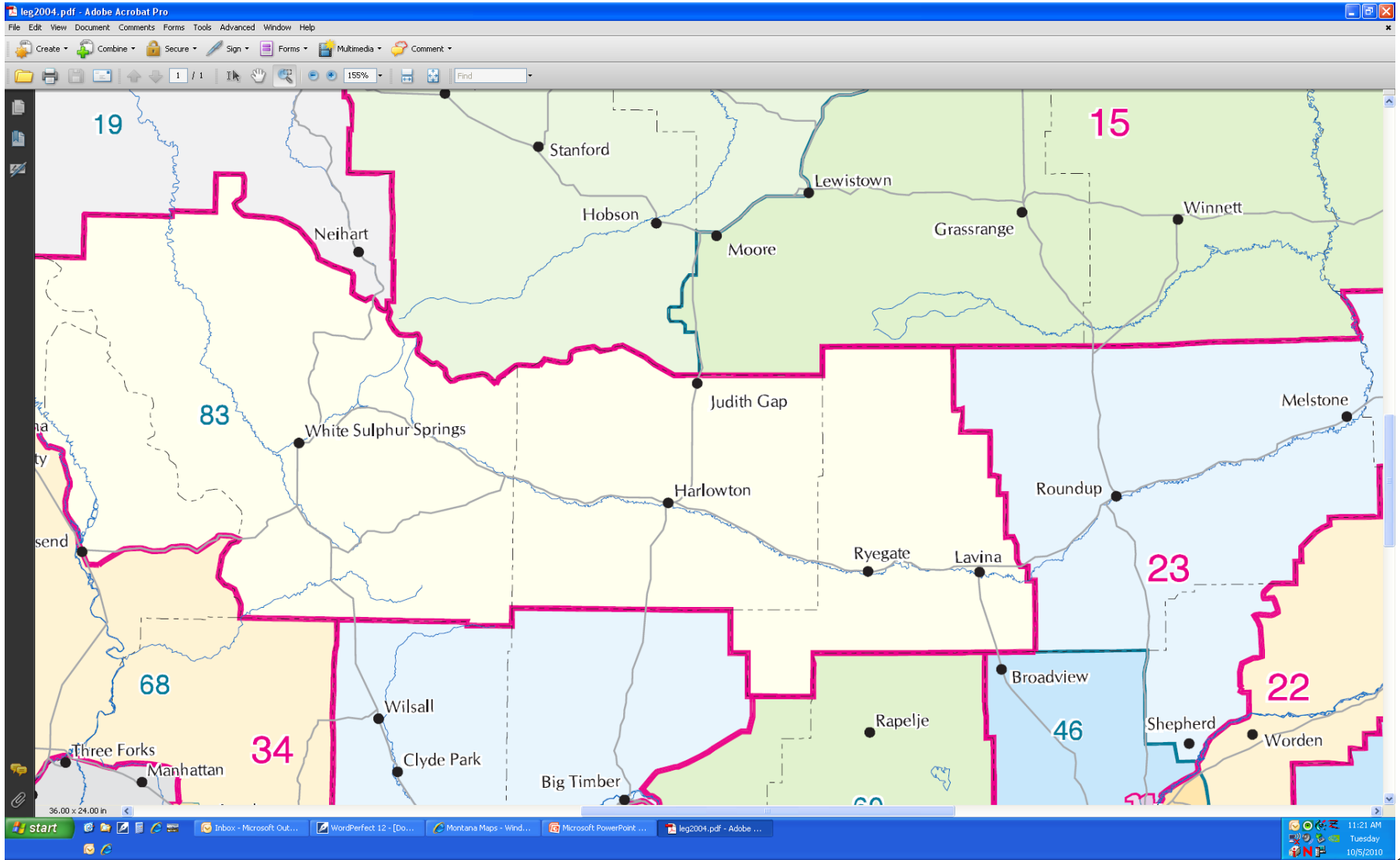
Local officials can help

How is your community is affected by mandatory and discretionary criteria?

Putting the pieces together



For fun, let's say District 83 has 300 too many people





Looking for people, not cows

Split Wheatland County along the river? The highway?

Web Images Videos Maps News Shopping Gmail more ▾

News | Help | Sign in

Google maps Harlowton, MT

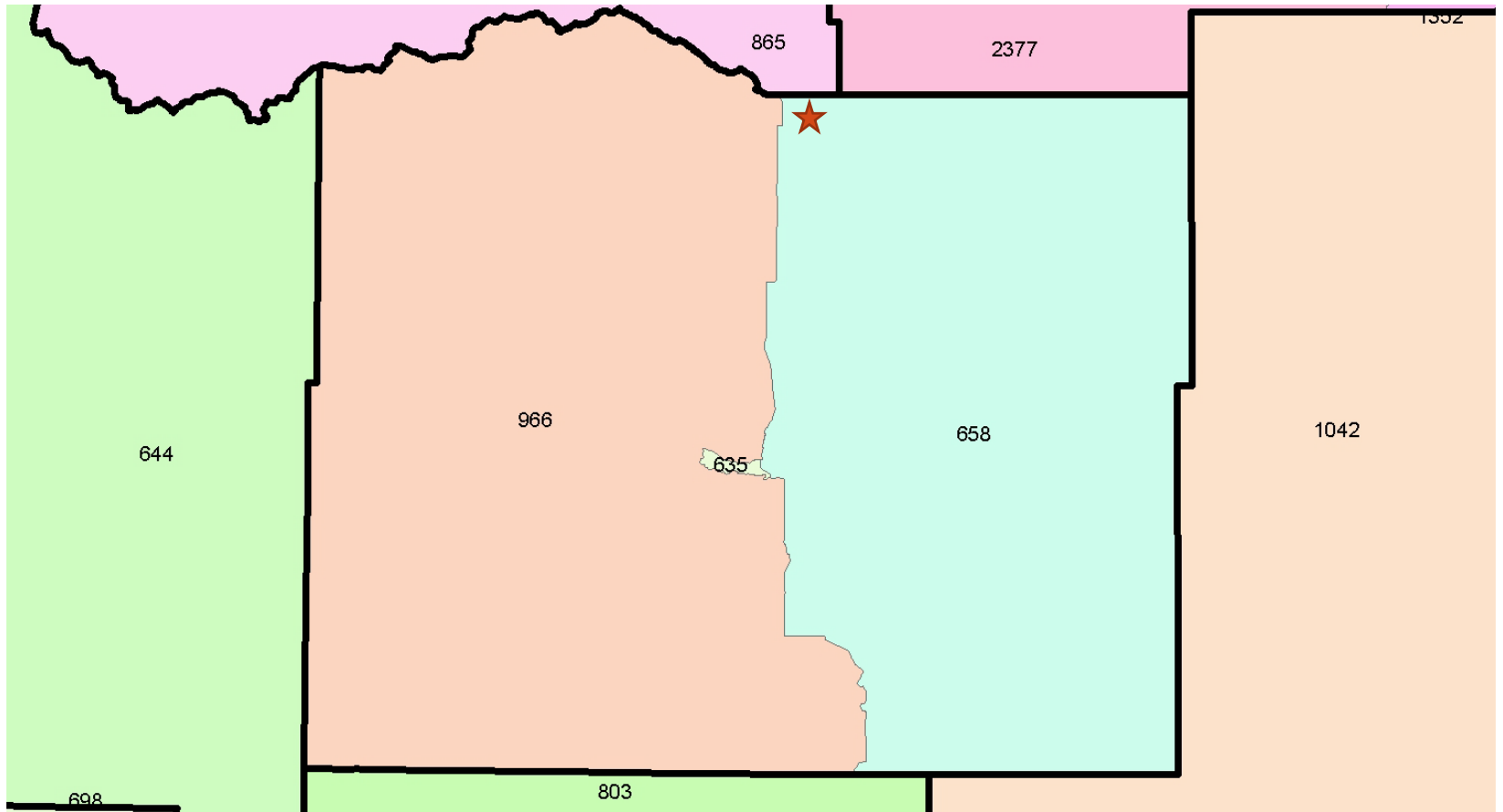
Search Maps Show search options

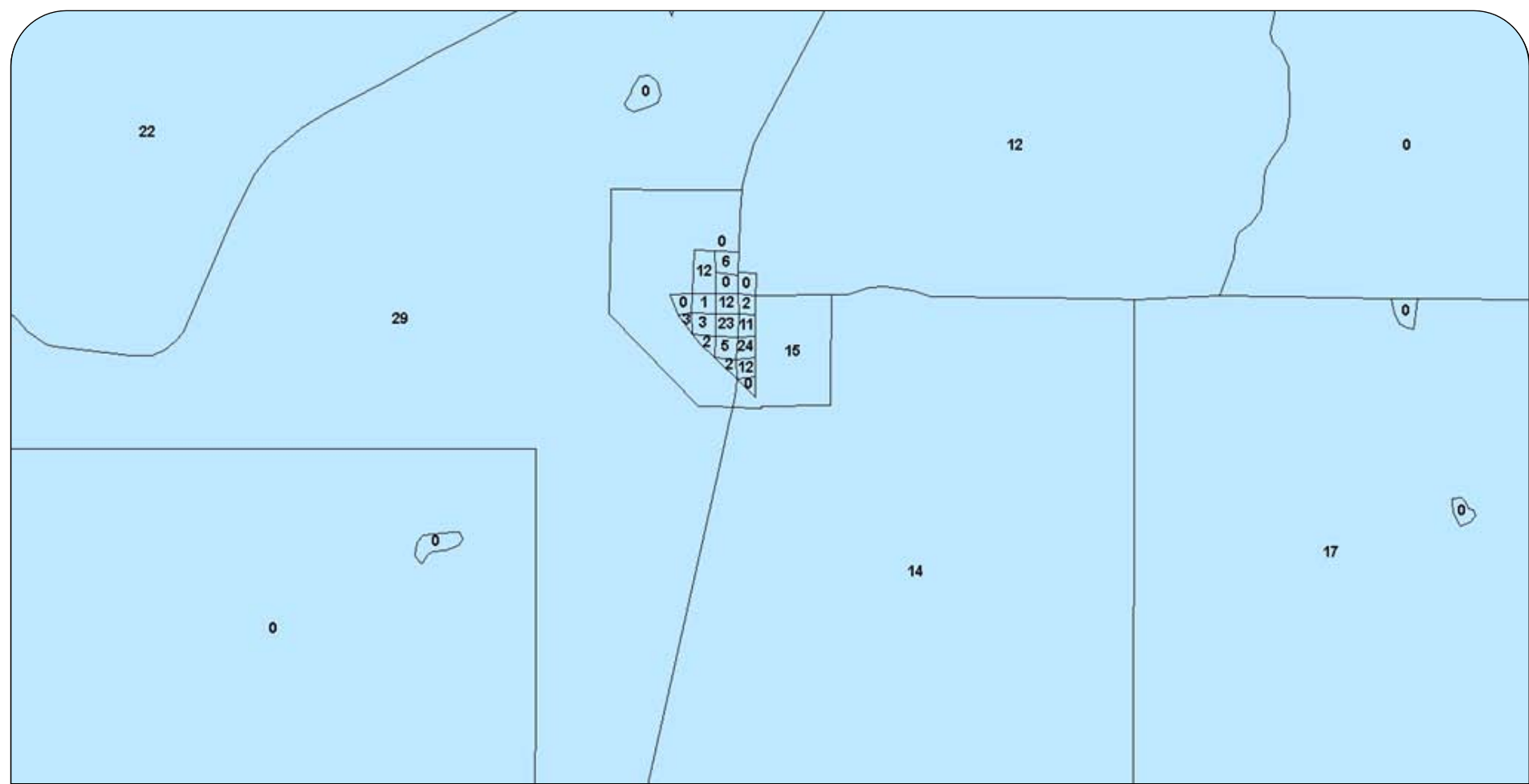




No Way, Says Joe's Dad
Harlowton City Council – 18 years

Wheatland County block group population

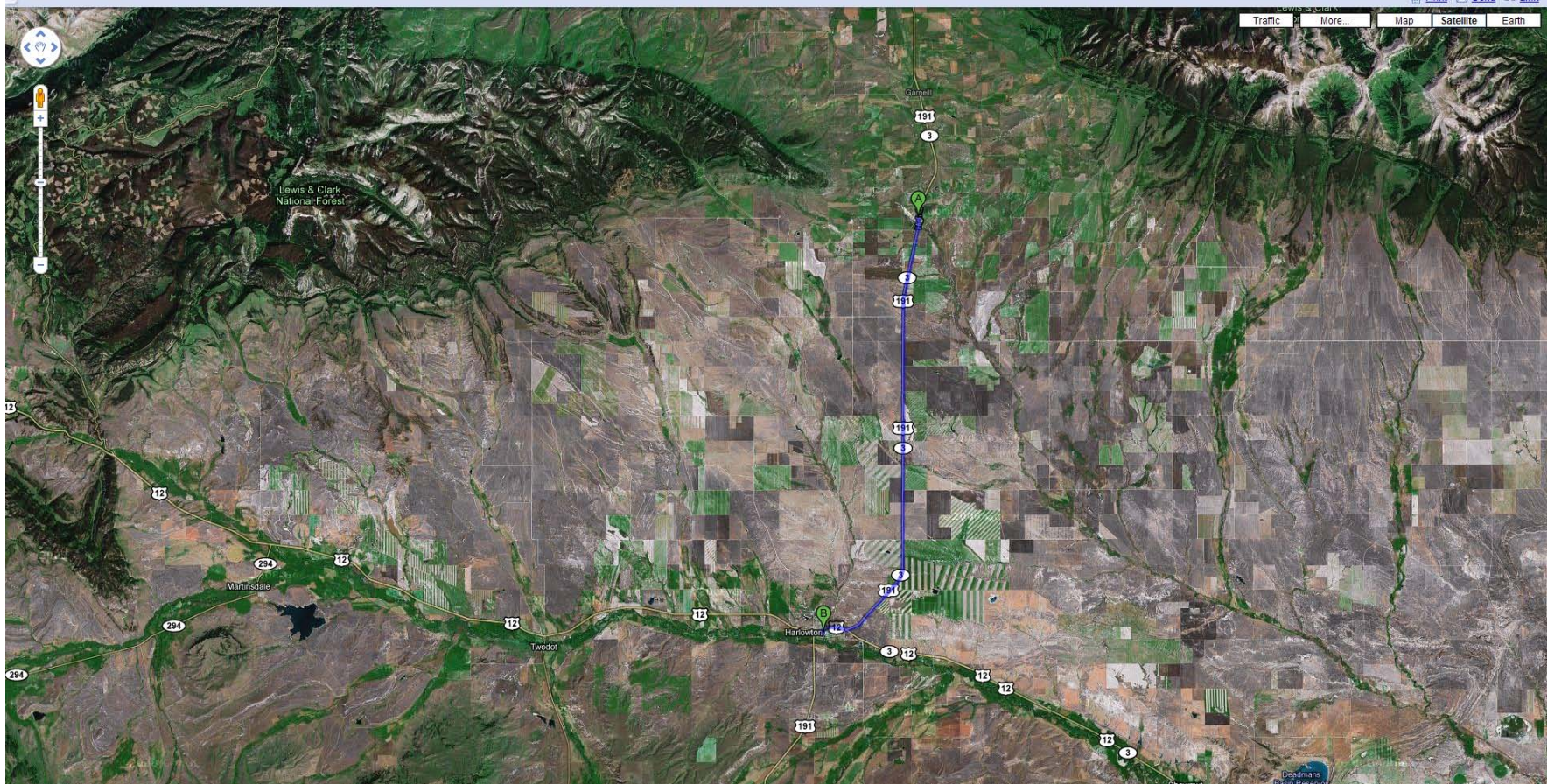




What about Judith Gap?

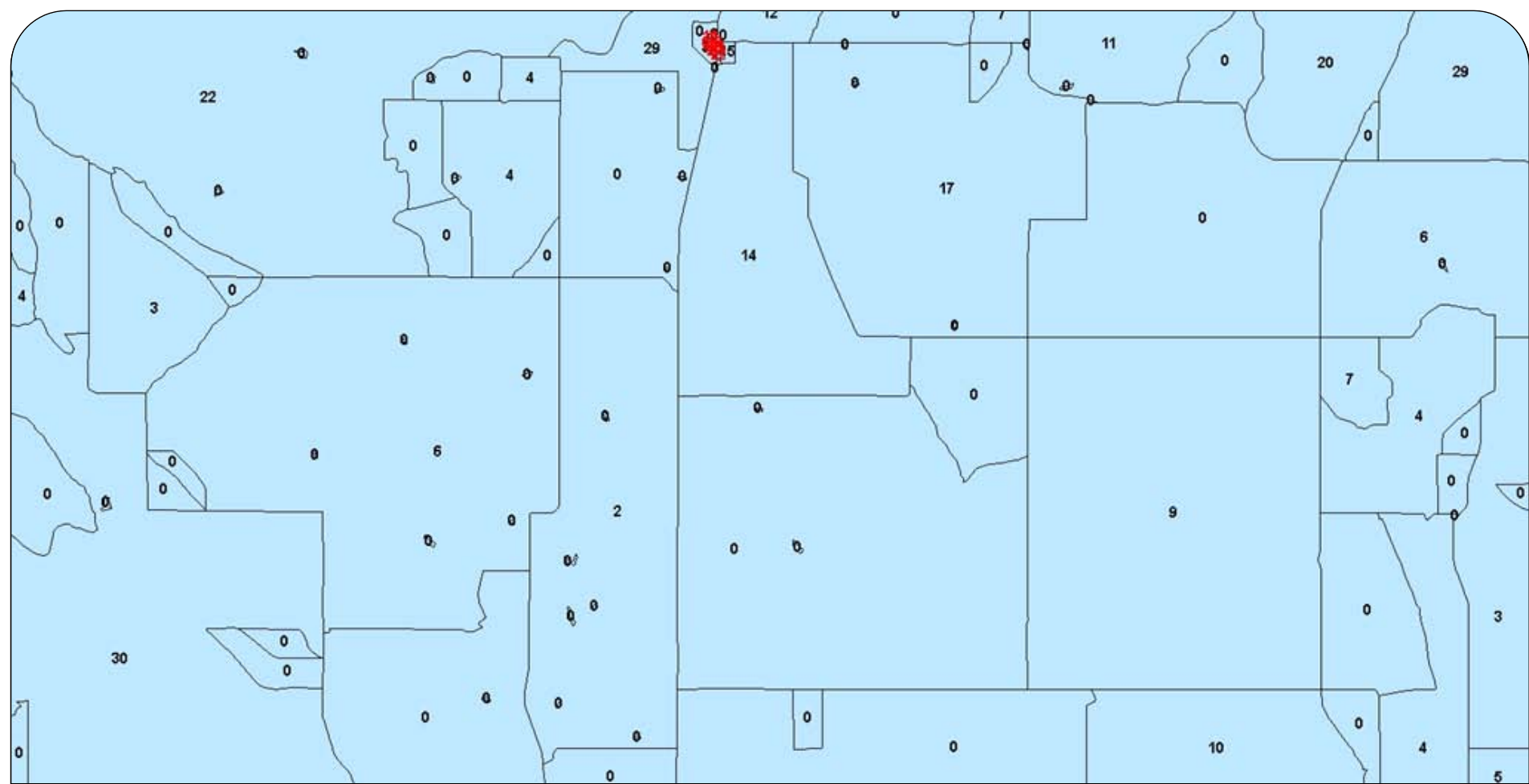
Population: 147 very nice souls

Judith Gap plays sports with Moore and Hobson – Go Titans



Still Looking for 153 People

Hello? Anybody out here?



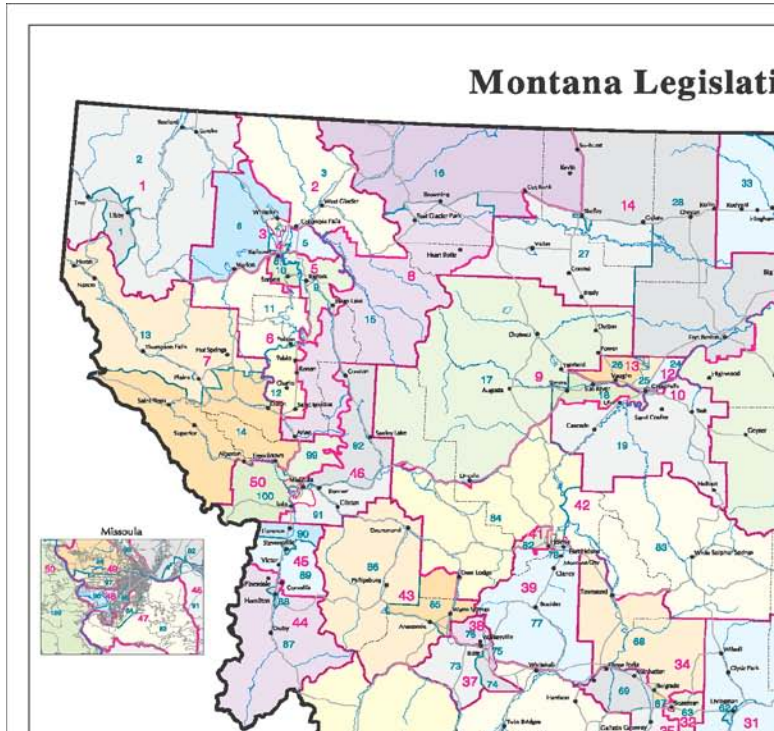
Block by Block

Keep clicking until you find 153 people

What did we just do?

- Obtained ideal population – in one district
- Split Wheatland County – Didn't follow line of political unit
- Compact?
- No effect on minorities?
- Retained rural community of interest? Kept Judith Gap intact

What about the other 99 districts?



How do I find out more?

- www.leg.mt.gov/districting
- districting@mt.gov
- Rachel Weiss – 444-5367
- Joe Kolman – 444-9280