

## By the Numbers: Broadwater County

A comparison of Broadwater County in five proposed redistricting plans

Montana Districting and Apportionment Commission  
Post Office Box 201706  
Helena, MT 59620-1706

Phone: 406-444-5367

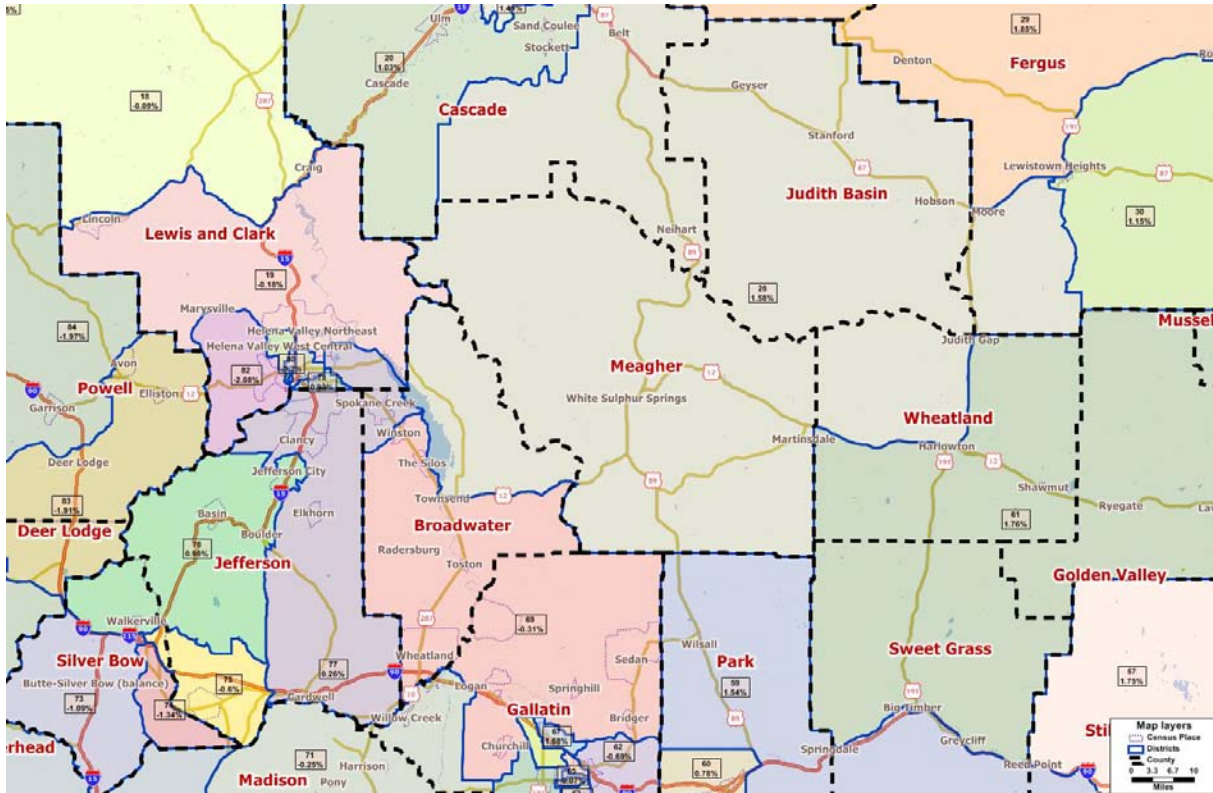
Fax: 406-444-3036

Email: [districting@mt.gov](mailto:districting@mt.gov)

Website: [www.leg.mt.gov/districting](http://www.leg.mt.gov/districting)

# Communities Plan

Theme: Integrates Montana communities of interest within multiple criteria



	<u>2010</u>	<u>2000</u>	<u>% Change</u>
County Population	5,612	4,385	28%

Proposed Districts: 3 total

Proposed District Number	Total Population	Deviation*	# of People in District from Broadwater County
28	10,050	1.58%	2,777
69	9,863	-0.31%	2,421
77	9,920	0.26%	414

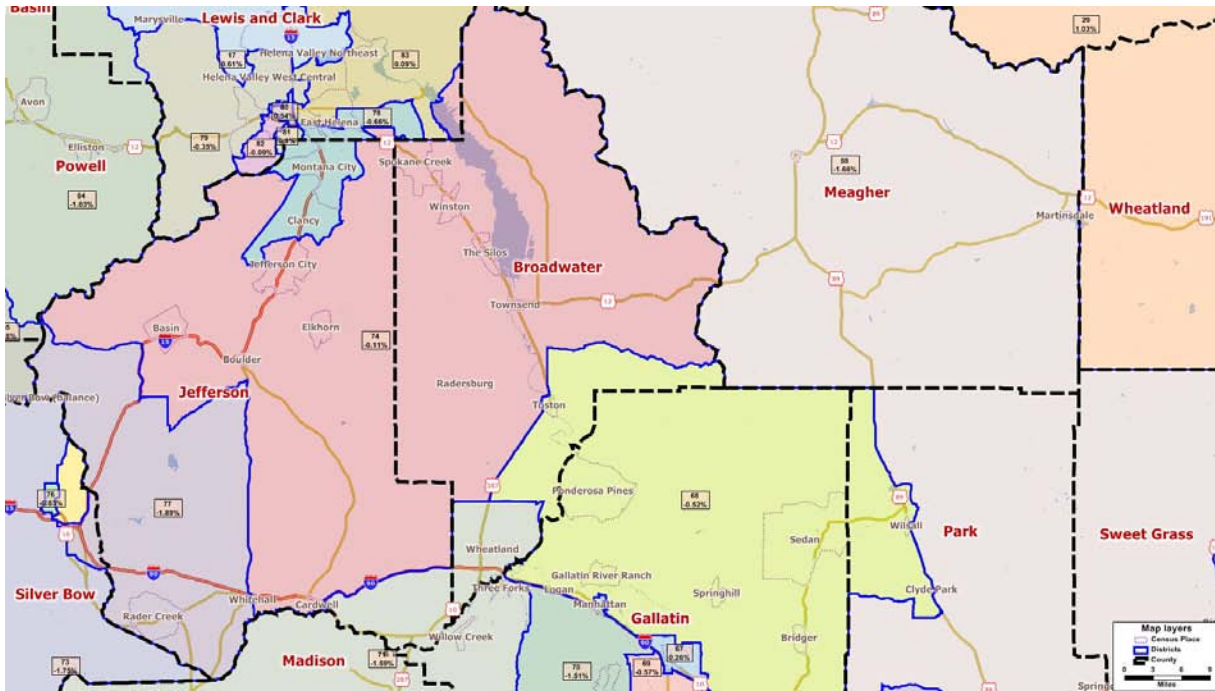
\*Ideal house district size after 2010 Census: 9,894 people

### Other counties included in proposed house district (# of people)

- 28 – Cascade (2,202), Fergus (695), Judith Basin (2,072), Meagher (1,891), Wheatland (413)
- 69 – Gallatin (7,442)
- 77 – Jefferson (6,233), Lewis and Clark (3,273)

# Deviation Plan

Theme: Emphasize the criterion on relative population equality between the districts



	<u>2010</u>	<u>2000</u>	<u>% Change</u>
County Population	5,612	4,385	28%

Proposed Districts: 3 total

Proposed District Number	Total Population	Deviation*	# of People in District from Broadwater County
68	9,843	-0.52%	182
71	9,737	-1.59%	568
74	9,883	-0.11%	4,862

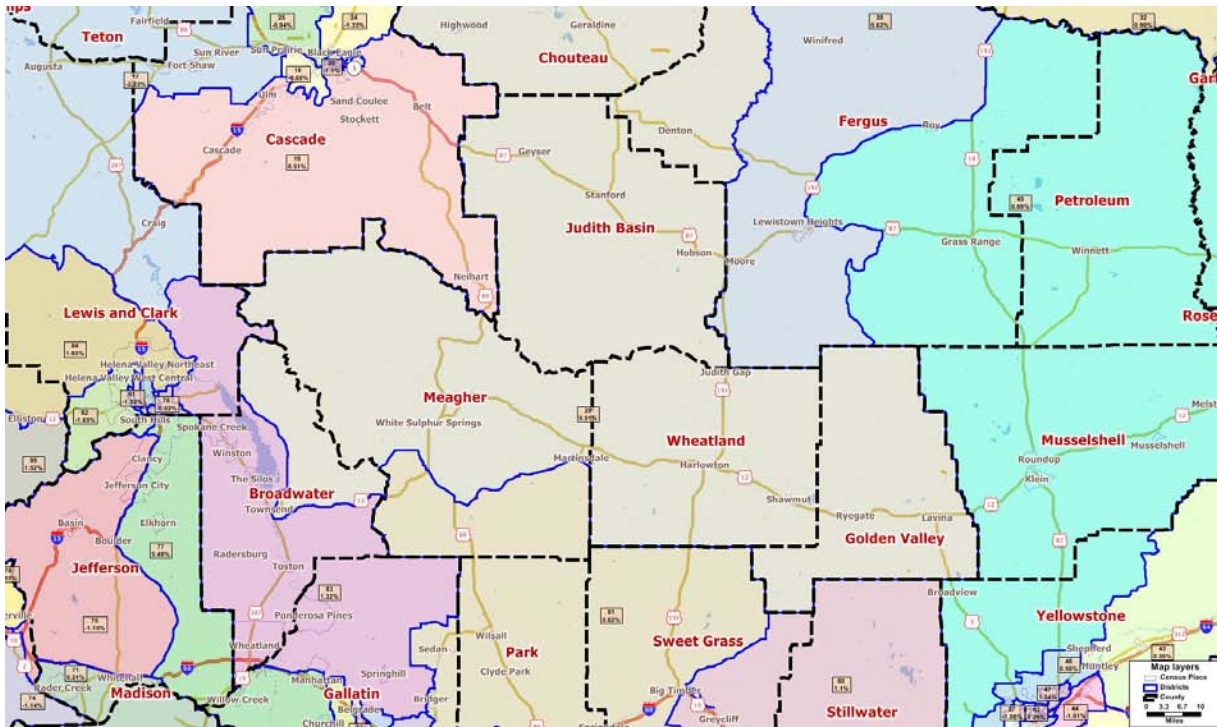
\*Ideal house district size after 2010 Census: 9,894 people

Other counties included in proposed house district (# of people)

- 68 – Gallatin (8,924), Park (737)
- 71 – Gallatin (2,411), Jefferson (85), Madison (6,673)
- 74 – Jefferson (4,702), Lewis and Clark (319)

## Existing Plan

Theme: Use the existing legislative district lines as a starting point for new lines



	<u>2010</u>	<u>2000</u>	<u>% Change</u>
County Population	5,612	4,385	28%

Proposed Districts: 2 total

Proposed District Number	Total Population	Deviation*	# of People in District from Broadwater County
29	9,944	0.51%	779
83	10,025	1.32%	4,833

\*Ideal house district size after 2010 Census: 9,894 people

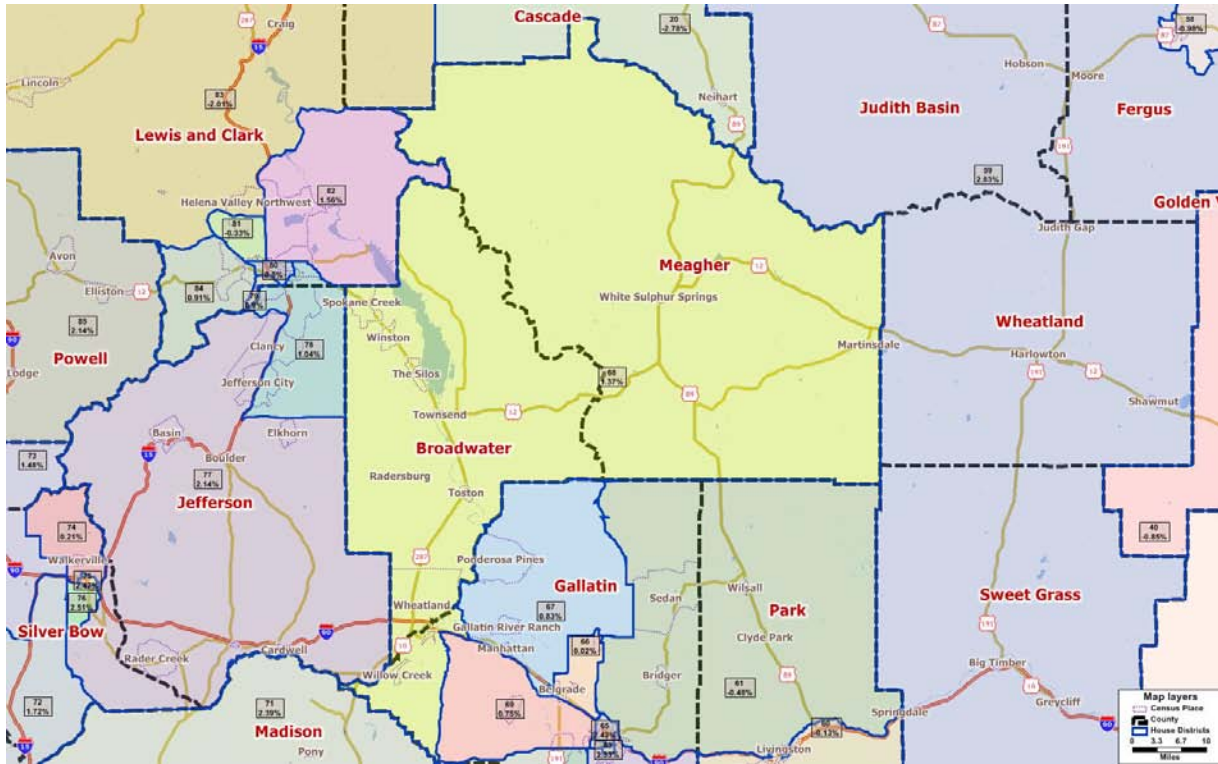
Other counties included in proposed house district (# of people)

29 – Chouteau (1,947), Fergus (532), Golden Valley (884), Judith Basin (2,072), Meagher (1,562), Wheatland (2,168)

83 – Gallatin (2,672), Lewis and Clark (2,520)

# Subdivision Plan

Theme: Attempt to keep political subdivisions intact



	<u>2010</u>	<u>2000</u>	<u>% Change</u>
County Population	5,612	4,385	28%

Proposed Districts: 1 total

Proposed District Number	Total Population	Deviation*	# of People in District from Broadwater County
68	10,030	1.37%	5,612

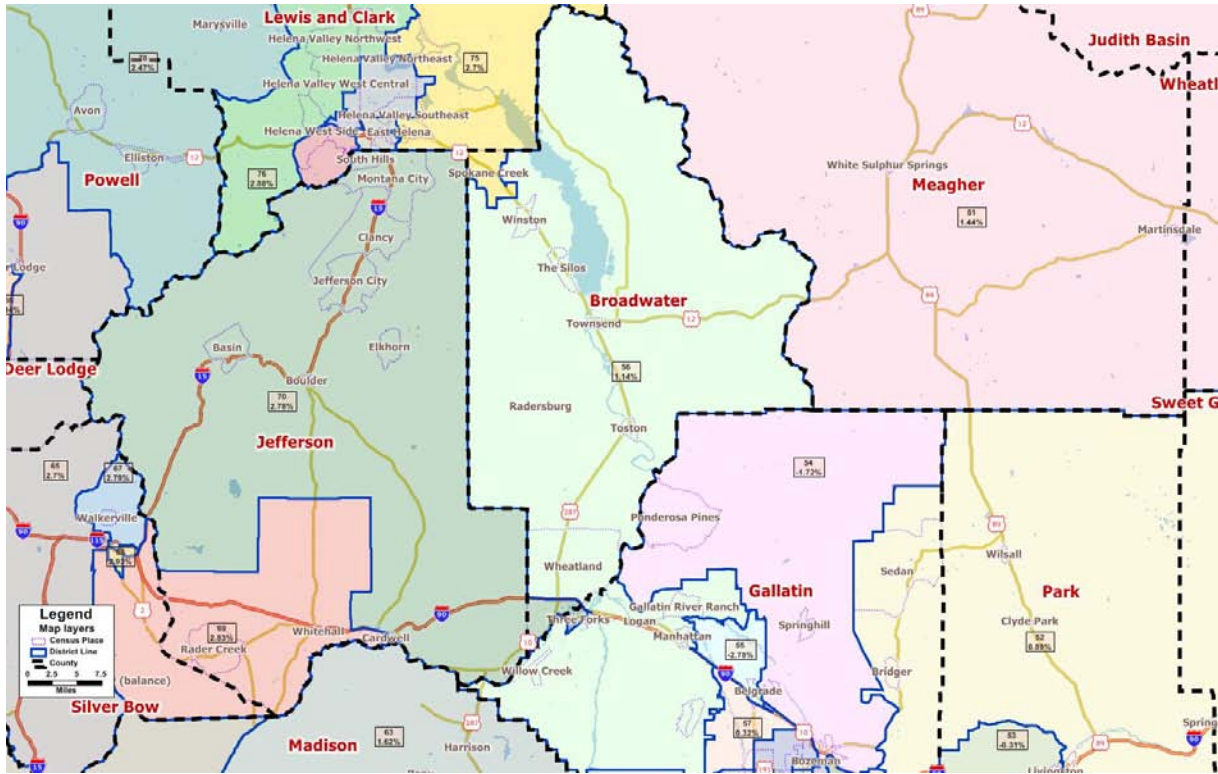
\*Ideal house district size after 2010 Census: 9,894 people

Other counties included in proposed house district (# of people)

68 – Gallatin (2,527), Meagher (1,891)

# Urban Rural Plan

Theme: Emphasize clear lines between population centers and rural areas



	<u>2010</u>	<u>2000</u>	<u>% Change</u>
County Population	5,612	4,385	28%

Proposed Districts: 3 total

Proposed District Number	Total Population	Deviation*	# of People in District from Broadwater County
56	10,007	1.14%	5,102
70	10,169	2.78%	155
75	10,161	2.70%	355

\*Ideal house district size after 2010 Census: 9,894 people

Other counties included in proposed house district (# of people)

- 56 – Gallatin (4,905)
- 70 – Gallatin (1,918), Jefferson (8,096)
- 75 – Lewis and Clark (9,806)