

## By the Numbers: Jefferson County

A comparison of Jefferson County in five proposed redistricting plans

Montana Districting and Apportionment Commission  
Post Office Box 201706  
Helena, MT 59620-1706

Phone: 406-444-5367

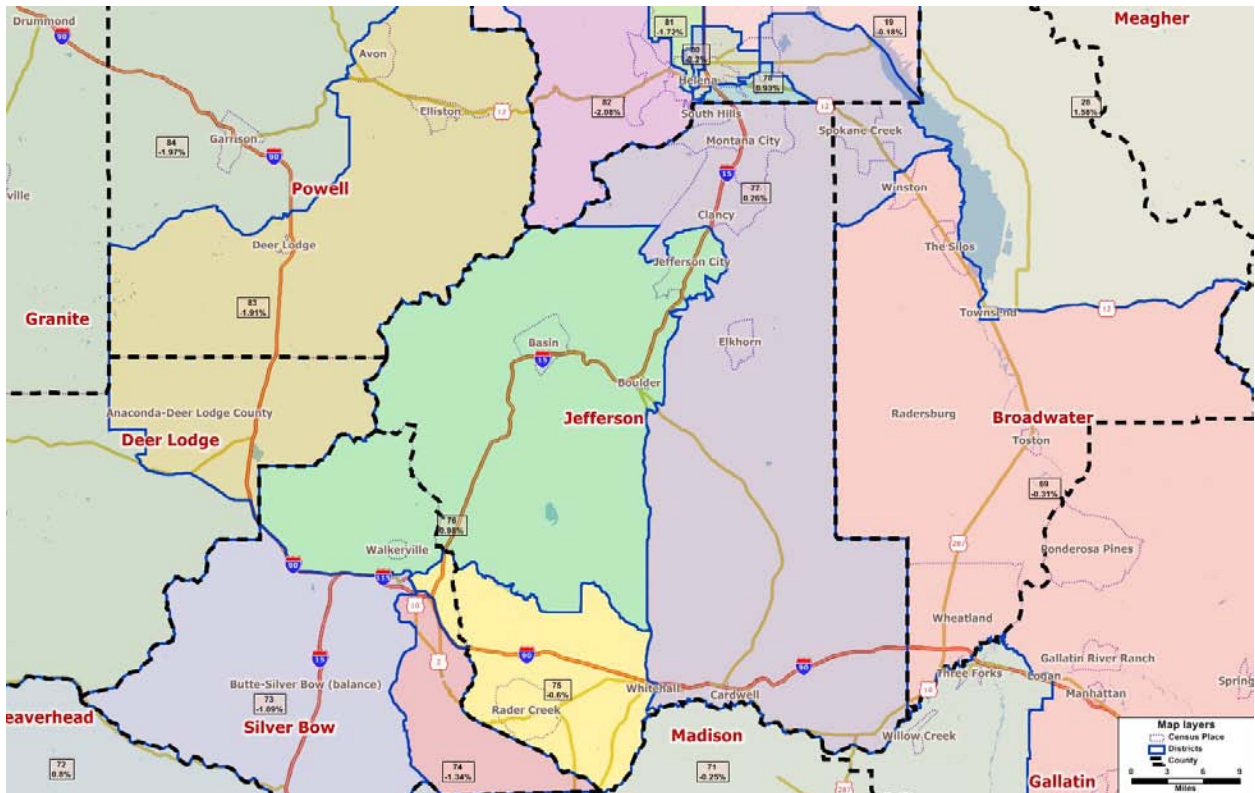
Fax: 406-444-3036

Email: [districting@mt.gov](mailto:districting@mt.gov)

Website: [www.leg.mt.gov/districting](http://www.leg.mt.gov/districting)

# Communities Plan

Theme: Integrates Montana communities of interest within multiple criteria



	<u>2010</u>	<u>2000</u>	<u>% Change</u>
County Population	11,406	10,049	13.5%

Proposed Districts: 3 total

Proposed District Number	Total Population	Deviation*	# of People in District from Jefferson County
75	9,835	-0.60%	2,612
76	9,991	0.98%	2,561
77	9,920	0.26%	6,233

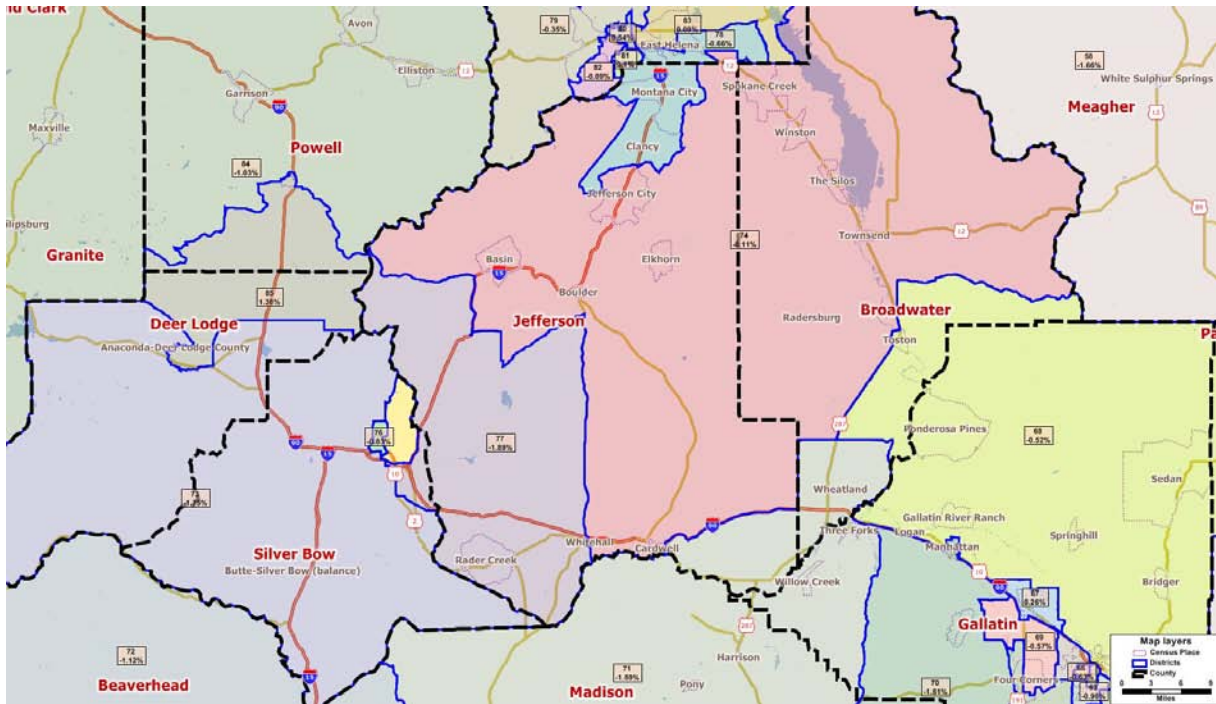
\*Ideal house district size after 2010 Census: 9,894 people

### Other counties included in proposed house district (# of people)

- 75 – Silver Bow (7,223)
- 76 – Silver Bow (7,430)
- 77 – Broadwater (414) and Lewis and Clark (3,273)

# Deviation Plan

Theme: Emphasize the criterion on relative population equality between the districts



	<u>2010</u>	<u>2000</u>	<u>% Change</u>
County Population	11,406	10,049	13.5%

Proposed Districts: 4 total

Proposed District Number	Total Population	Deviation*	# of People in District from Jefferson County
71	9,737	-1.59%	85
74	9,883	-0.11%	4,702
77	9,707	-1.89%	1,732
78	9,829	-0.66%	4,887

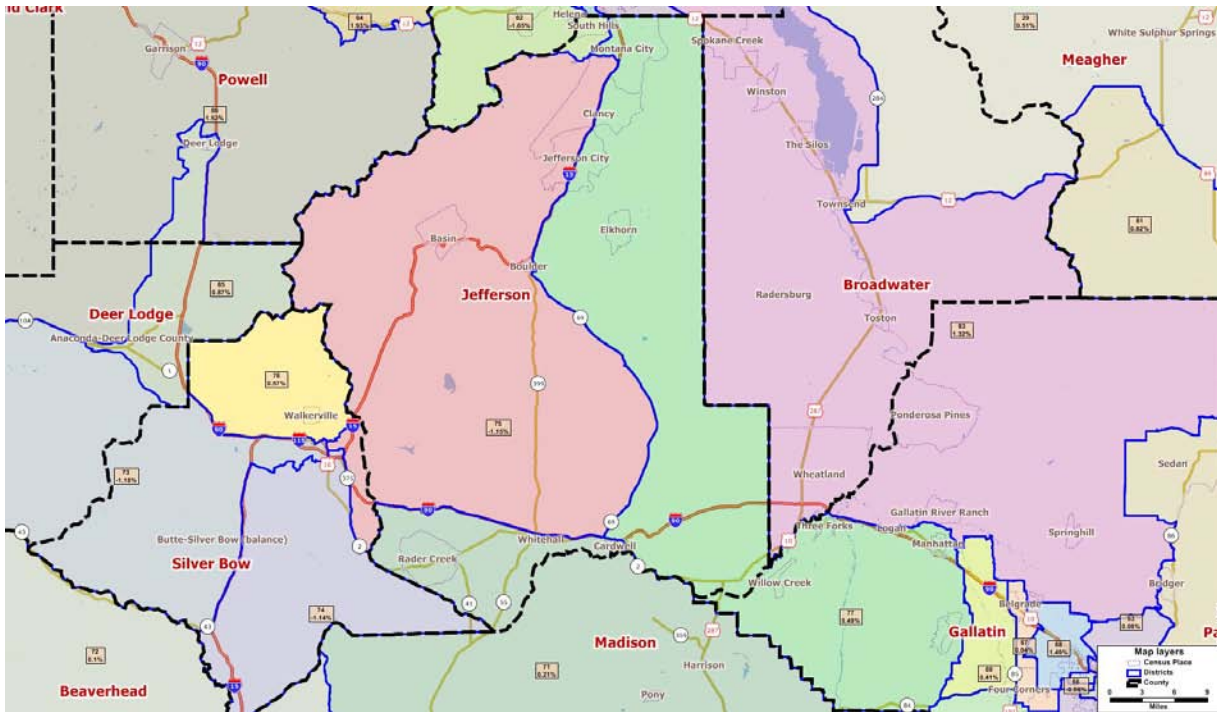
\*Ideal house district size after 2010 Census: 9,894 people

Other counties included in proposed house district (# of people)

- 71 – Broadwater (568), Gallatin (2,411), and Madison (6,673)
- 74 – Broadwater (4,862), Lewis and Clark (319)
- 77 – Silver Bow (7,975)
- 78 – Lewis and Clark (4,942)

## Existing Plan

Theme: Use the existing legislative district lines as a starting point for new lines



	<u>2010</u>	<u>2000</u>	<u>% Change</u>
County Population	11,406	10,049	13.5%

Proposed Districts: 4 total

Proposed District Number	Total Population	Deviation*	# of People in District from Jefferson County
71	9,915	0.21%	2,882
75	9,780	-1.15%	4,395
77	9,942	0.49%	3,635
82	9,731	-1.65%	494

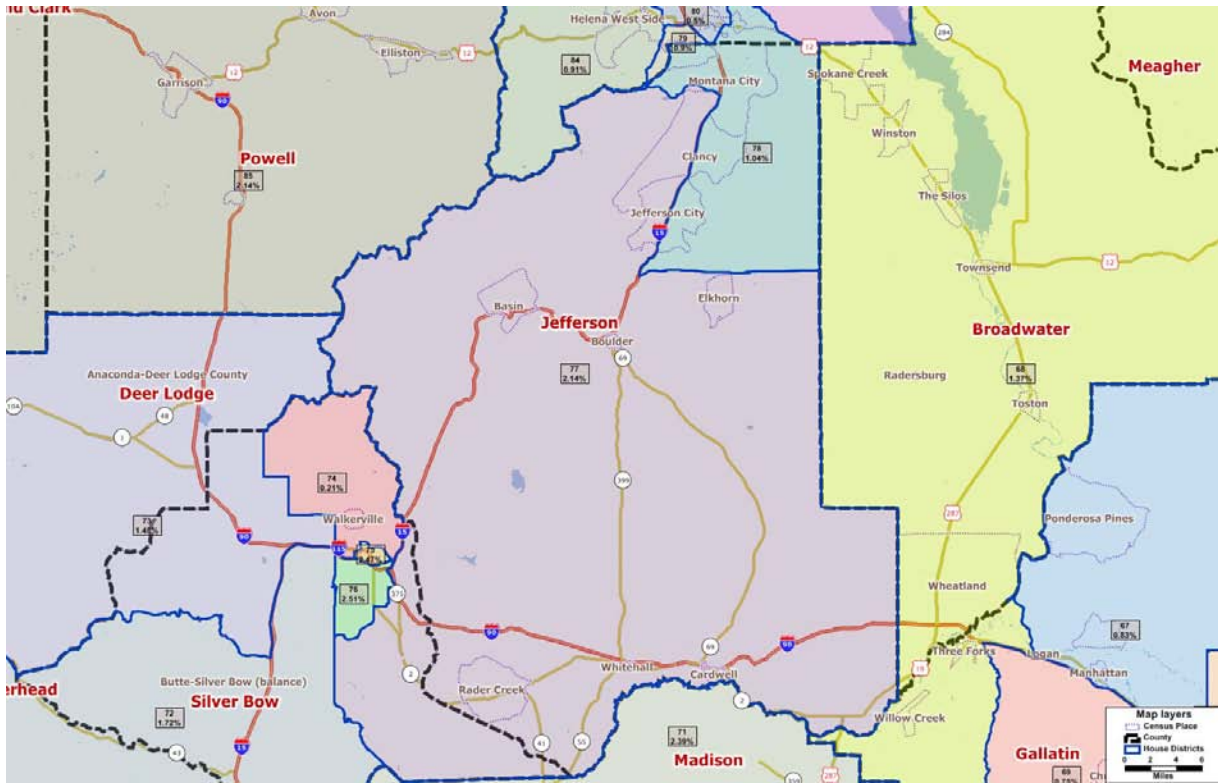
\*Ideal house district size after 2010 Census: 9,894 people

Other counties included in proposed house district (# of people)

- 71 – Madison (7,033)
- 75 – Silver Bow (5,385)
- 77 – Gallatin (6,307)
- 82 – (Lewis and Clark (9,237)

# Subdivision Plan

Theme: Attempt to keep political subdivisions whole when possible



	<u>2010</u>	<u>2000</u>	<u>% Change</u>
County Population	11,406	10,049	13.5%

Proposed Districts: 2 total

Proposed District Number	Total Population	Deviation*	# of People in District from Jefferson County
77	10,106	2.14%	7,661
78	9,997	1.04%	3,745

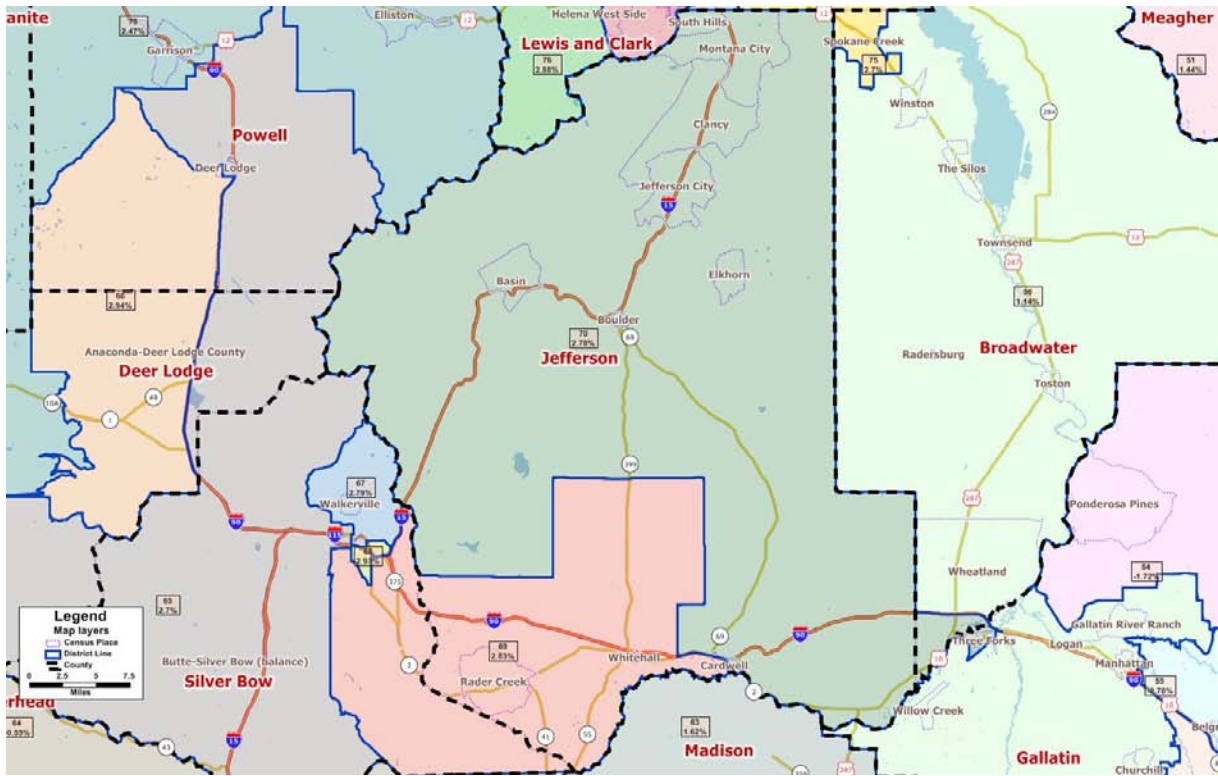
\*Ideal house district size after 2010 Census: 9,894 people

Other counties included in proposed house district (# of people)

- 77 – Silver Bow (2,445)
- 78 – Lewis and Clark (6,252)

# Urban Rural Plan

Theme: Emphasize clear lines between population centers and rural areas



	<u>2010</u>	<u>2000</u>	<u>% Change</u>
County Population	11,406	10,049	13.5%

Proposed Districts: 2 total

Proposed District Number	Total Population	Deviation*	# of People in District from Jefferson County
69	10,174	2.83%	3,310
70	10,169	2.78%	8,096

\*Ideal house district size after 2010 Census: 9,894 people

### Other counties included in proposed house district (# of people)

- 69 – Silver Bow (6,864)
- 70 – Broadwater (155) and Gallatin (1,918)