

By the Numbers: Silver Bow County

A comparison of Silver Bow in five proposed redistricting plans

Montana Districting and Apportionment Commission
Post Office Box 201706
Helena, MT 59620-1706

Phone: 406-444-5367

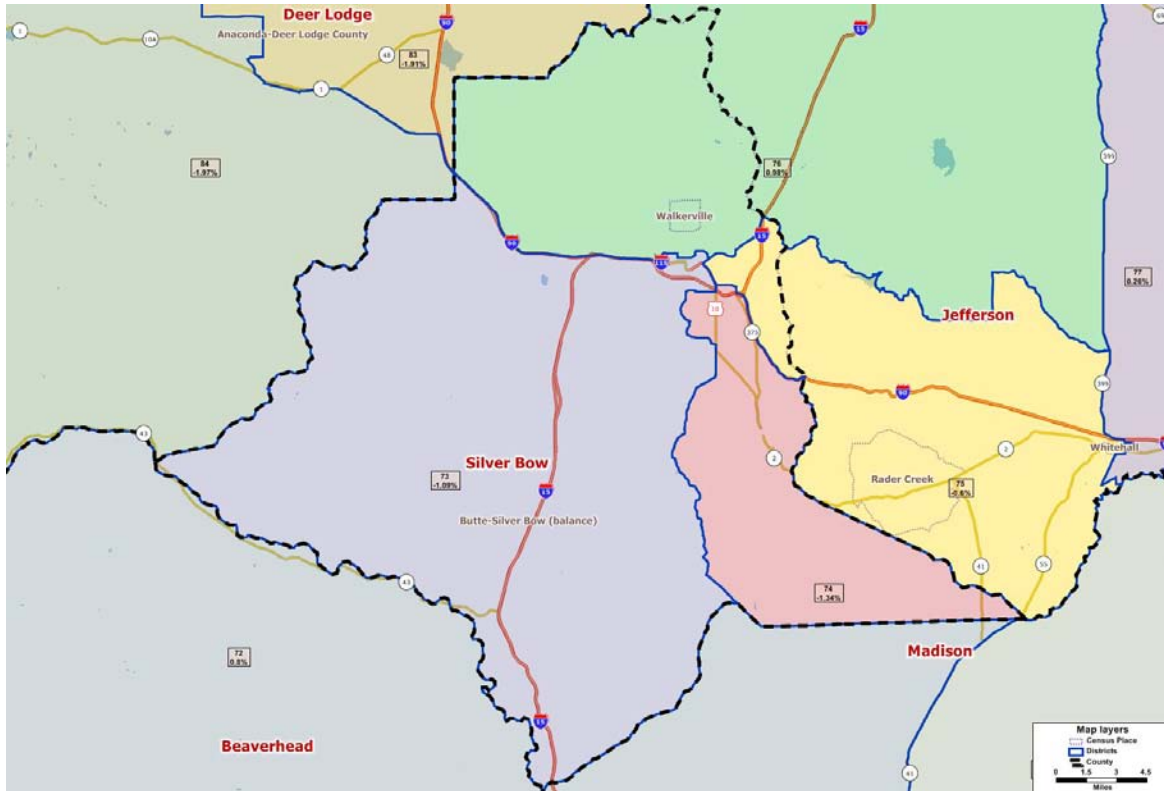
Fax: 406-444-3036

Email: districting@mt.gov

Website: www.leg.mt.gov/districting

Communities Plan

Theme: Integrates Montana communities of interest within multiple criteria



	<u>2010</u>	<u>2000</u>	<u>% Change</u>
County Population	34,200	34,606	-1.2%

Proposed Districts: 4 total

Proposed District Number	Total Population	Deviation*	# of People in District from Silver Bow County
73	9,786	-1.09%	9,786
74	9,761	-1.34%	9,761
75	9,835	-0.60%	7,223
76	9,991	0.98%	7,430

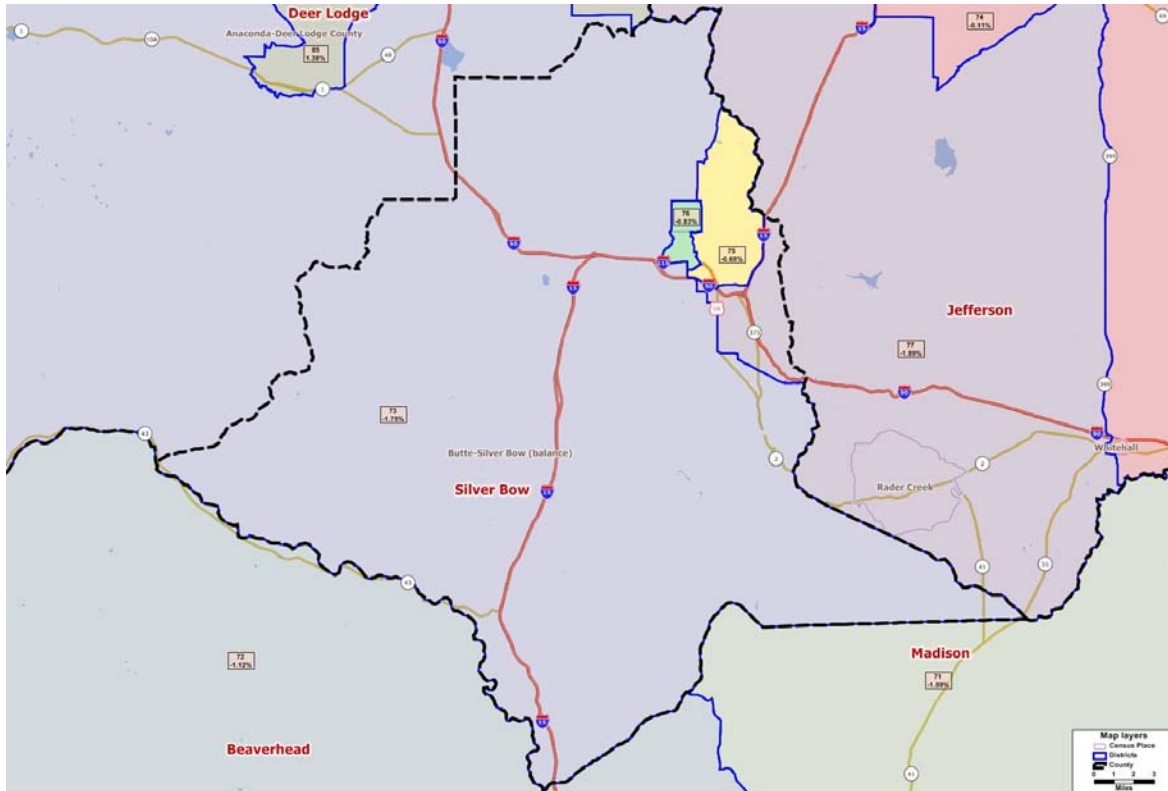
*Ideal house district size after 2010 Census: 9,894 people

Other counties included in proposed house district (# of people)

- 73 – None
- 74 – None
- 75 – Jefferson (2,612)
- 76 – Jefferson (2,561)

Deviation Plan

Theme: Emphasize the criterion on relative population equality between the districts



	<u>2010</u>	<u>2000</u>	<u>% Change</u>
County Population	34,200	34,606	-1.2%

Proposed Districts: 4 total

Proposed District Number	Total Population	Deviation*	# of People in District from Silver Bow County
73	9,721	-1.75%	6,586
75	9,827	-0.68%	9,827
76	9,812	-0.83%	9,812
77	9,707	-1.89%	7,975

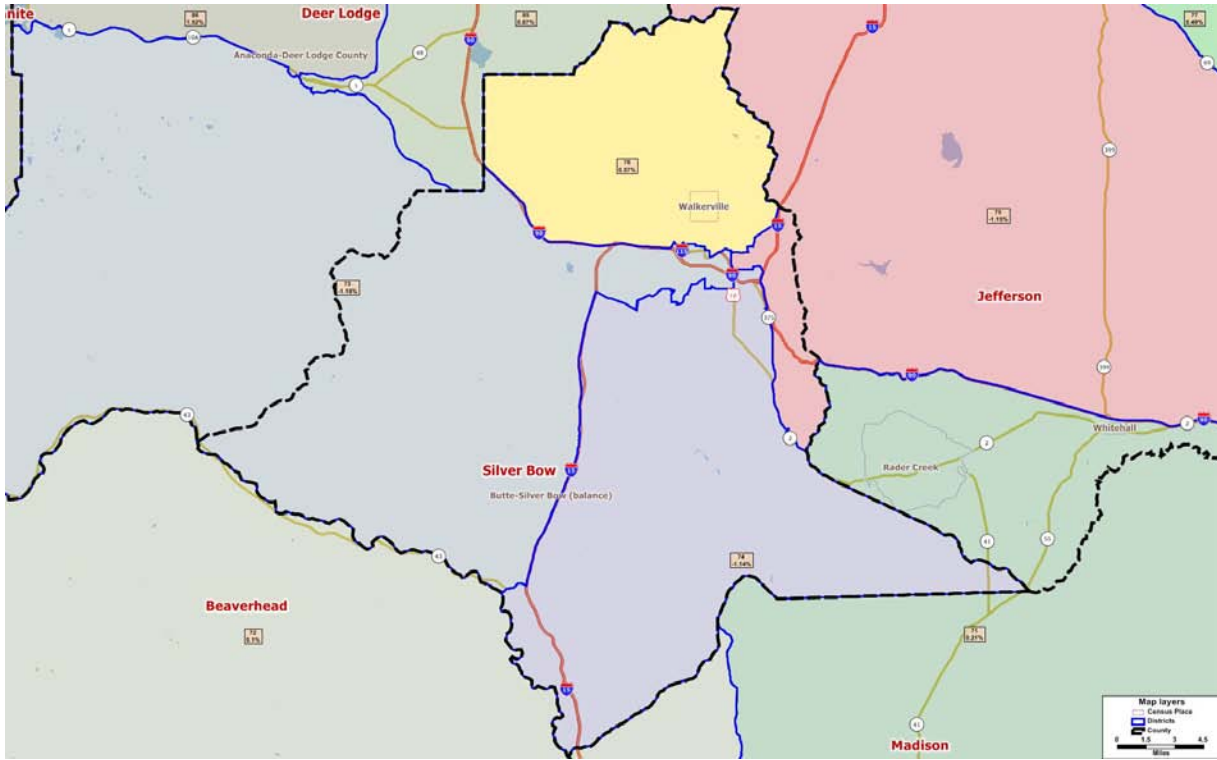
*Ideal house district size after 2010 Census: 9,894 people

Other counties included in proposed house district (# of people)

- 73 – Deer Lodge (3,135)
- 75 – None
- 76 – None
- 77 – Jefferson (1,732)

Existing Plan

Theme: Use the existing legislative district lines as a starting point for new lines



	<u>2010</u>	<u>2000</u>	<u>% Change</u>
County Population	34,200	34,606	-1.2%

Proposed Districts: 4 total

Proposed District Number	Total Population	Deviation*	# of People in District from Silver Bow County
73	9,777	-1.18%	9,084
74	9,781	-1.14%	9,781
75	9,780	-1.15%	5,385
76	9,950	0.57%	9,950

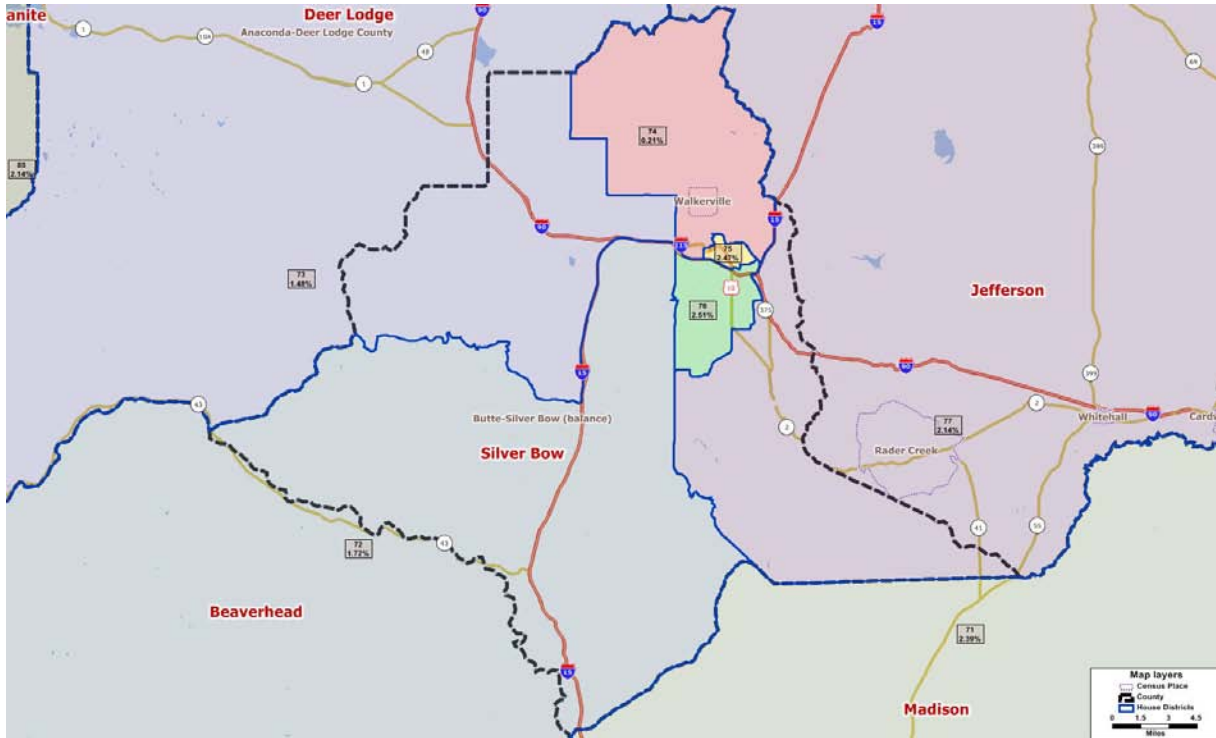
*Ideal house district size after 2010 Census: 9,894 people

Other counties included in proposed house district (# of people)

- 73 – Deer Lodge (693)
- 74 – None
- 75 – Jefferson (4,395)
- 76 - None

Subdivision Plan

Theme: Attempt to keep political subdivisions intact



	<u>2010</u>	<u>2000</u>	<u>% Change</u>
County Population	34,200	34,606	-1.2%

Proposed Districts: 6 total

Proposed District Number	Total Population	Deviation*	# of People in District from Silver Bow County
72	10,064	1.72%	818
73	10,040	1.48%	742
74	9,915	0.21%	9,915
75	10,138	2.47%	10,138
76	10,142	2.51%	10,142
77	10,106	2.14%	2,445

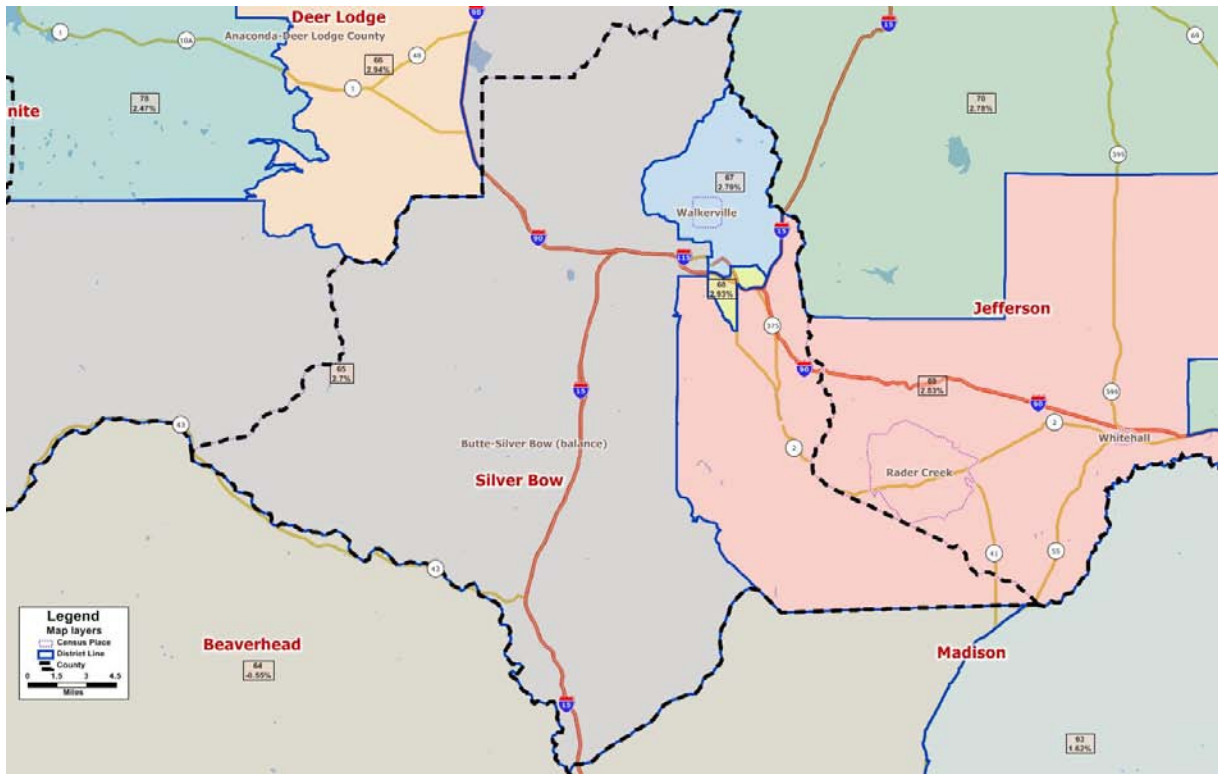
*Ideal house district size after 2010 Census: 9,894 people

Other counties included in proposed house district (# of people)

- 72 – Beaverhead (9,246)
- 73 – Deer Lodge (9,298)
- 74 – None
- 75 – None
- 76 – None
- 77 – Jefferson (7,661)

Urban Rural Plan

Theme: Emphasize clear lines between population centers and rural areas



	<u>2010</u>	<u>2000</u>	<u>% Change</u>
County Population	34,200	34,606	-1.2%

Proposed Districts: 4 total

Proposed District Number	Total Population	Deviation*	# of People in District from Silver Bow County
65	10,161	2.70%	6,982
67	10,170	2.79%	10,170
68	10,184	2.93%	10,184
69	10,174	2.83%	6,864

*Ideal house district size after 2010 Census: 9,894 people

Other counties included in proposed house district (# of people)

- 65 – Deer Lodge (136), Powell (3,043)
- 67 – None
- 68 – None
- 69 – Jefferson (3,310)