



# Water Marketing and Mitigation in Washington

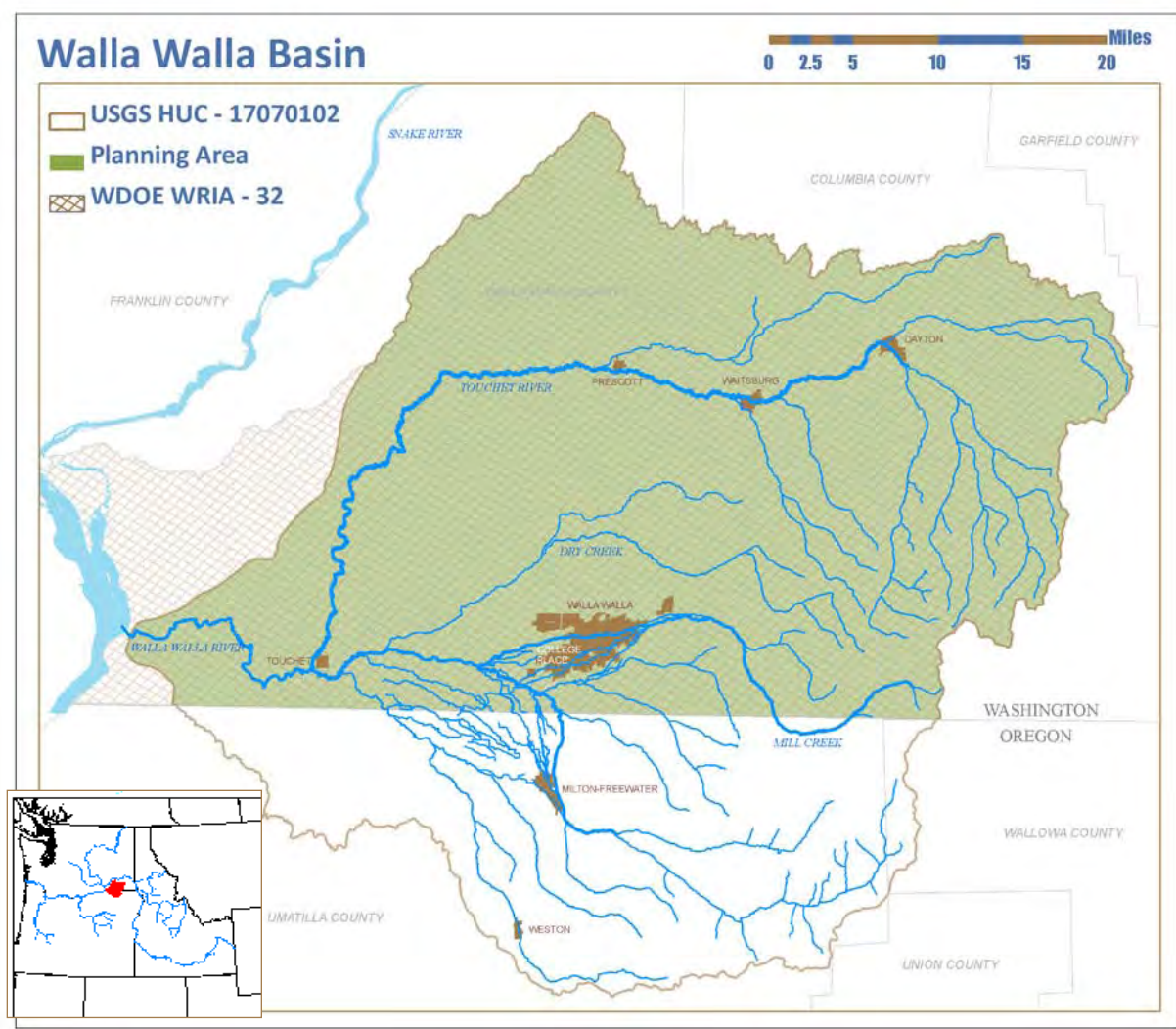
**Walla Walla Watershed Management Partnership**  
**Cathy Schaeffer, Executive Director**

**Montana Legislature Water Policy Interim Committee**

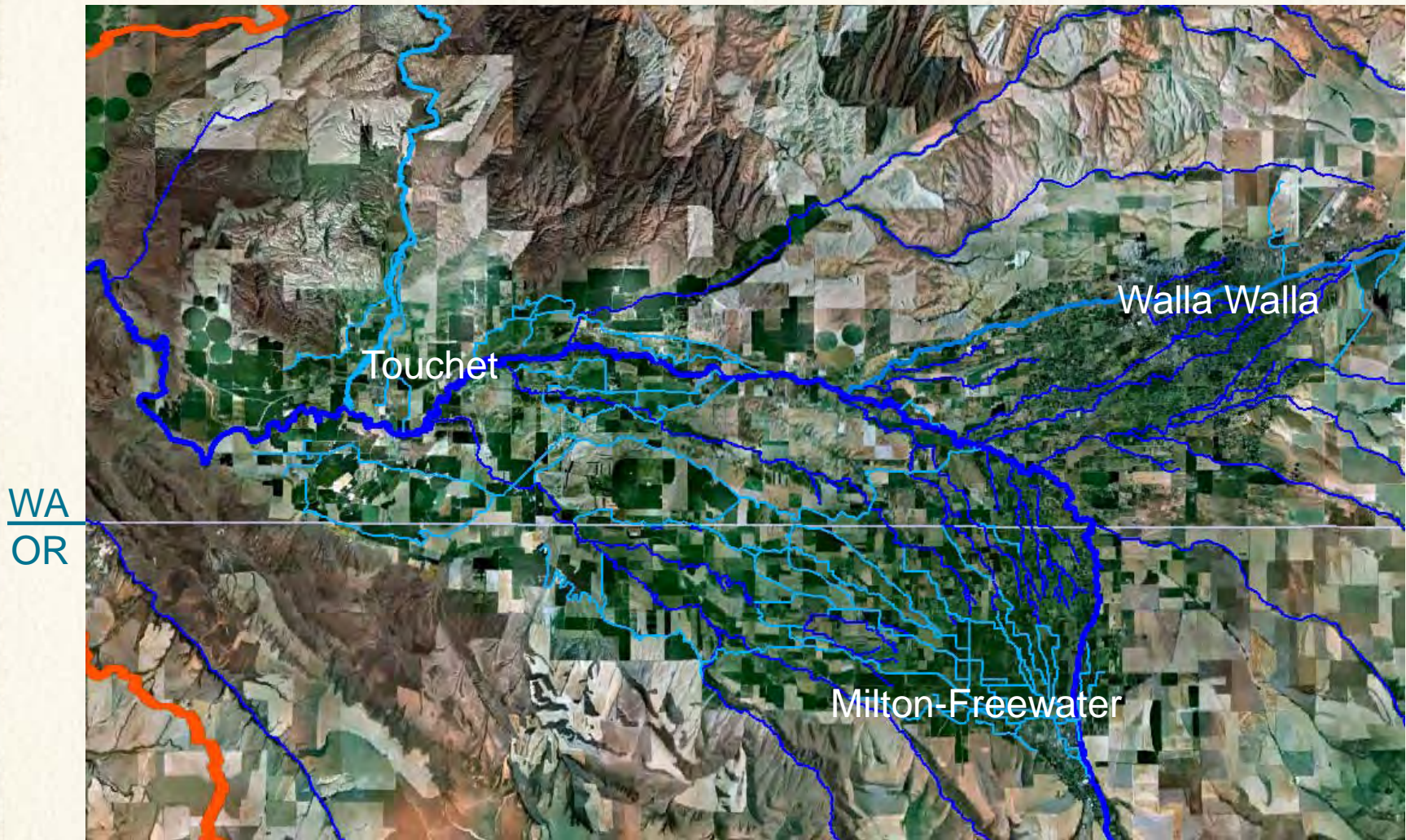
**January 10, 2012**



# Walla Walla Watershed



# Walla Walla River: Braided, Distributary System

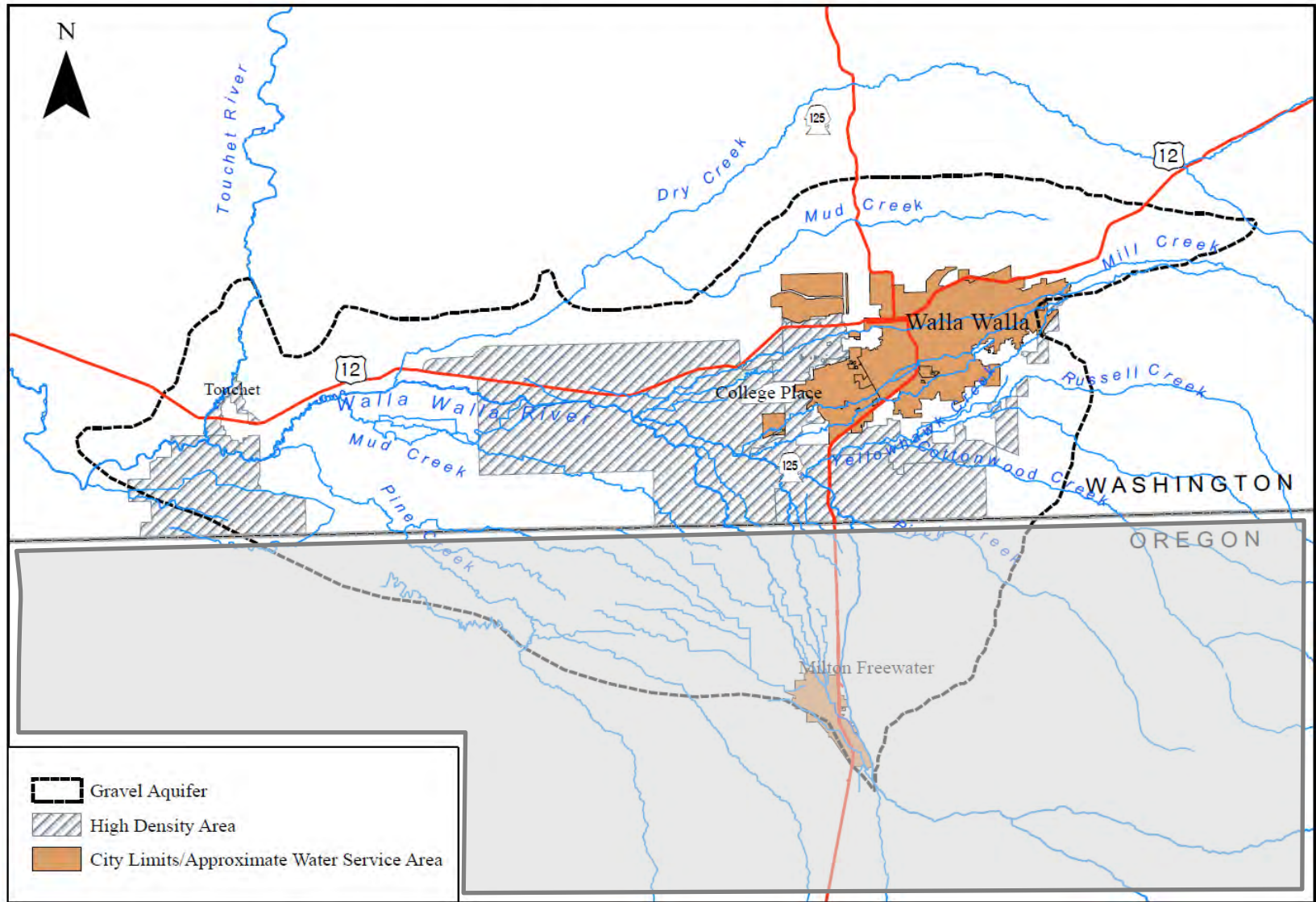


# Selected Requirements of Walla Walla Instream Flow Rule (WAC 173-532)

- In the high density zoning areas (10-acres or more dense), new exempt wells in gravel aquifer are limited: domestic and outdoor use
- A single residence is limited to 1,250 gallons per day
- Multiple residences that are part of a group use are limited to 5,000 gallons per day
- Meters to be installed and data collected monthly from May 1 through November 30. Meter data is to be submitted to Ecology annually by December 31<sup>st</sup>
- **Water-for-water mitigation required for new outdoor water use withdrawing from the shallow aquifer in the high density zones**



# Zoning and Approximate Extent of Gravel Aquifer in Walla Walla County

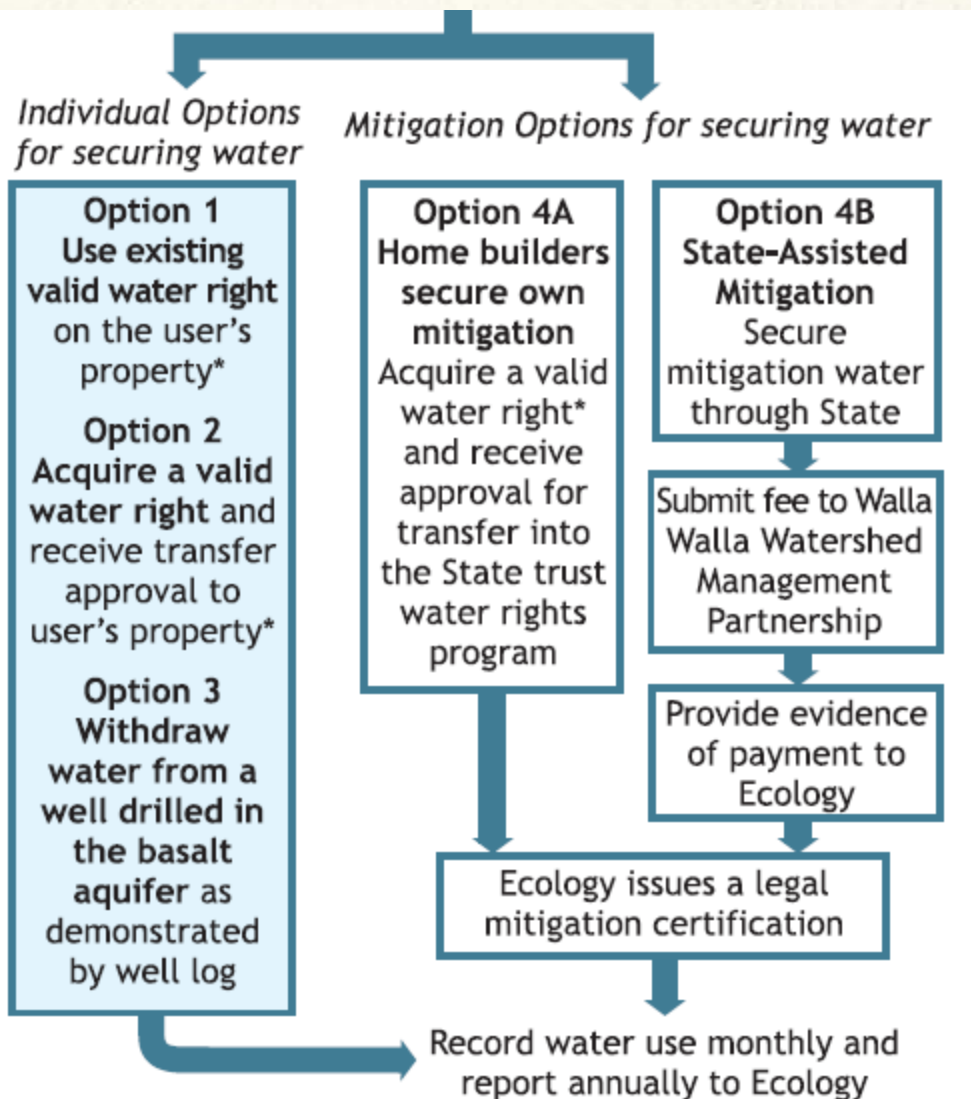


# Mitigation for Outdoor Use

- Outdoor water use during May-November requires mitigation: about 1,000 gallons per day (since ~250 gpd indoor use is non-consumptive, septic returns)
- Over the May-November mitigation season, the total required mitigation is 0.55 acre/feet of water
- A new well user cannot exceed 1,250 gpd, combined indoor and outdoor use: *approx 1/12<sup>th</sup> acre of lawn*
- **Partnership administers a Mitigation Exchange with Ecology, with banked water available to provide a source of mitigation in small increments to new wells**



# Options for Outdoor Water Use



## How it works: The Exempt Well Mitigation Exchange

- Partnership acquires surface water and gravel aquifer water rights to “seed” the exchange, placing water into state Trust program- *Wet water is purchased and held as mitigation*
- Homebuilders pay Partnership \$2,000 application fee to obtain a mitigation credit for their new exempt well
- With Partnership approval, Ecology issues a mitigation certificate to new well user for outdoor use May-Nov
- Partnership and Ecology debit the exchange 0.55 ac/ft for each mitigation certificate
- Homebuilders must meter use, record monthly and report annually to Ecology
- Monitoring and enforcement by Ecology





# Walla Walla Watershed Management Partnership

FOR FISH.

FOR FARMS.

FOR EVERYONE.

WWCC Water & Environmental Center · 500 Tausick Way · Walla Walla, WA 99362

p. 509.524.5216 · f. 509.524.5209 · [www.wallawallawatershed.org](http://www.wallawallawatershed.org)

