



HealthCARE MONTANA

Creating Access to Rural Education

HealthCARE MONTANA

To transform localized college healthcare education into a statewide workforce system

\$14,998,597

- 18 Consortium Partners
- 39 Employer Partners signed LOC
 - Employer numbers continue to increase

www.HealthCAREMontana.org

October 1, 2014—
September 30, 2018

**A Homegrown Solution
for Montana's
Healthcare Workforce**

HealthCARE MONTANA

Objectives

1

Create and deliver statewide healthcare pathways characterized by stacked and latticed credentials with common healthcare core curricula for patient care and administrative tracks that feature modularized and contextualized curriculum, and online and technology-based strategies.

2

Systemically address Montana's nursing shortages and provide accelerated pathways to completion of nursing programs and bridges to BSN for adult learners.

3

Increase success for students by providing services that better prepare adult learners for success in the curriculum; accelerate credential completion; coach students in pathway navigation; and provide access to distance education.

4

Engage the healthcare industry, education, workforce programs and other stakeholders in statewide healthcare workforce transformation and strategic planning; curriculum development; on-the-job training and apprenticeship opportunities; rapid response cycle regional planning; and data driven approaches for demand-driven workforce development and education strategies.



HealthCARE MONTANA Consortium College Partners

- Bitterroot College UM, Hamilton
- Blackfeet Community College, Browning
- City College at MSU-Billings, Billings
- Chief Dull Knife College, Lame Deer
- Flathead Valley Community College, Kalispell
- Gallatin College-MSU, Bozeman
- Great Falls College-MSU, Great Falls
- Helena College-UM, Helena
- Miles Community College, Miles City
- Missoula College UM, Missoula
- Highlands College of Montana Tech, Butte
- University of Montana-Western, Dillon
- Montana State University-Northern, Havre
- Salish Kootenai College, Pablo
- Stone Child College, Box Elder, MT



HealthCARE MONTANA Employer Partners signed LOC

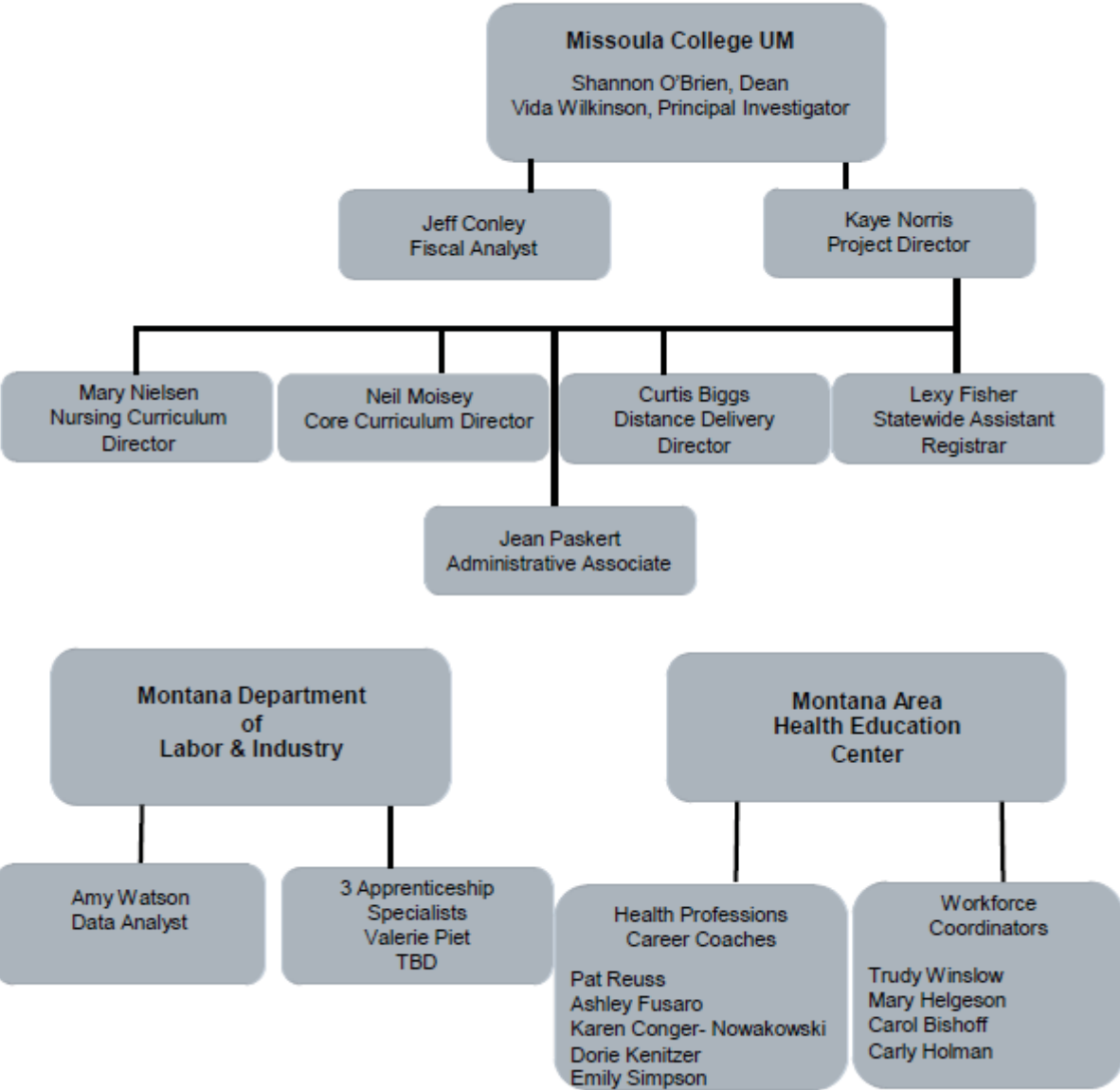
| | | | | |
|--|---|--|--|--|
| Benefis Health System— Great Falls | Community Medical Center—Missoula | Montana Board of Medical Examiners | Northern Montana Hospital—Havre | Rosebud Health Center— Forsyth |
| Bighorn Valley Health Center, Inc.—Hardin | Daniels Memorial Health Center—Scobey | Montana Board of Nursing—Statewide | Pioneer Medical Center— Big Timber | St. John’s Lutheran Ministries—Billings |
| Billings Area Indian Health Services | Frances Mahon Deaconess Hospital—Glasgow | Montana Health Care Providers—Statewide | Pondera Medical Center— Conrad | St. Peter’s Hospital— Helena |
| Billings Clinic | Goodman Group—Rocky Mountain Region | Montana Health Network—Eastern MT | Prairie Community Hospital—Terry | Sweet Medical Center— Chinook |
| Bozeman Deaconess Health Center | Holy Rosary Healthcare— Miles City | Montana Primary Care Association—Statewide | Providence Health & Services—Western MT | Tamarack Management, Inc.—Western MT |
| Bullhook Community Health Center—Havre | Kalispell Regional Healthcare | Montana State Hospital— Warm Springs | Providence St. Joseph Medical Center—Polson | Valley View Home— Glasgow |
| Cabinet Peaks Medical Center-Libby | Livingston Health Center | Nightingale Nursing & Caregiving—Multi City | Riverstone Health— Billings | Wheatland Memorial Healthcare—Harlowton |
| Clark Fork Valley Hospital—Plains | Monida Healthcare Network—Western MT | North Valley Hospital— White Fish | Roosevelt Medical Center—Culbertson | |

HealthCARE MONTANA Organization

HealthCARE Leadership Team
 John Cech, Deputy Commissioner, Higher Ed.
 Shannon O'Brien, Dean, Missoula College
 Vida Wilkinson, Principal Investigator
 Annie Glover, MT Dept. of Labor & Industry
 Kris Juliar, Montana AHEC

HealthCARE Steering Committee
 (includes Leadership Team)
 Cynthia Gustafson, Board of Nursing
 Sandy Sacry, Helena College
 Karen Vandaveer, MT Tech
 Katie Willock, Salish Kootenai College Kelly
 Evans, Beartooth Billings Clinic
 Matt Springer, RevUP
 Myrna Ridenour, FVCC
 Paul Teagel, The Goodman Group
 Lisa Skriner, City College MSU-B

**HealthCARE Consortium Partners
 Healthcare Transformation Specialists**
 Bitterroot College UM, Jenny Moore
 Blackfeet Community College, TBD
 City College - MSU Billings, Sheila McGinnis
 Chief Dull Knife College - John Tuthill
 Flathead Valley CC - Gail Whitney
 Gallatin Community College, Carol Schloss
 Great Falls College - MSU, Eleazar Ortega
 Helena College UM - Mark Buckner
 Miles Community College - Rita Kratky
 Missoula College UM, Dylan Rogness
 MT Tech Highlands College - Annette Kankelborg
 UM - Western, TBD
 MSU Northern - Jaymie Freidank
 Salish Kootenai College - Brittnee Broom
 Stone Child College - Elinor Wright



Kaye Norris, Project Director, Missoula

Carol Bischoff, Statewide Coordinator, Helena

Western AHEC Region South Central AHEC Region North Central AHEC Region Eastern AHEC Region North Eastern AHEC Region

Carly Holman, WFC, Missoula WFC, Helena WFC, Helena Mary Helgeson, WFC, Billings Trudy Winslow, WFC, Miles City

| | | | | | | | | | |
|------------------------------|---|----------------------------|---|--|--|--------------------------|--|--------------------------------|--|
| Emily Simpson, HCC, Missoula | Jennifer Moore, HTS, Bitterroot College, Hamilton | Ashley Fusaro, HCC, Helena | Carol Schloss, HTS, Gallatin College, Bozeman | Karen Conger-Nowakowski, HCC, Helena/Great Falls | Blackfeet Community College, No HTS, Browning | Pat Reuss, HCC, Billings | Dr. Sheila McGinnis, HTS Billings City College, | Dorie Kentzer, HCC, Miles City | Rita Kratky, HTS Miles Community College |
| | Gail Whitney, HTS, Flathead Valley Community College, Kalispell | | Mark Buckner, HTS, Helena College | | Eleazar Ortega, HTS Great Falls College | | John Tuthill, HTS, Chief Dull Knife College, Lame Deer | | |
| | Dylan Rogness, HTS, Missoula College | | Annette Kankelborg, HTS, Montana Tech, Highlands College, Butte | | Jaymie Friedank, HTS, MSU Northern, Havre | | | | |
| | Brittnee Broom, HTS, Salish Kootenai College, Pablo | | UM Western, Dillon, No HTS | | Elinor Wright, HTS, Stone Child College, Box Elder | | | | |

AHEC = Area Health Education Center
 HCC = Healthcare Career Coach
 HTS = Healthcare Transformation Specialist
 WFC = Workforce Coordinator



HealthCARE MONTANA



- Credit hours completed
- Retention
- Remedial & program completion
- Credential/degree attainment
- Progression to advanced training
- Employment
- Retention in employment after program completion
- Wages

Breaking New Ground for Healthcare Education in Montana

