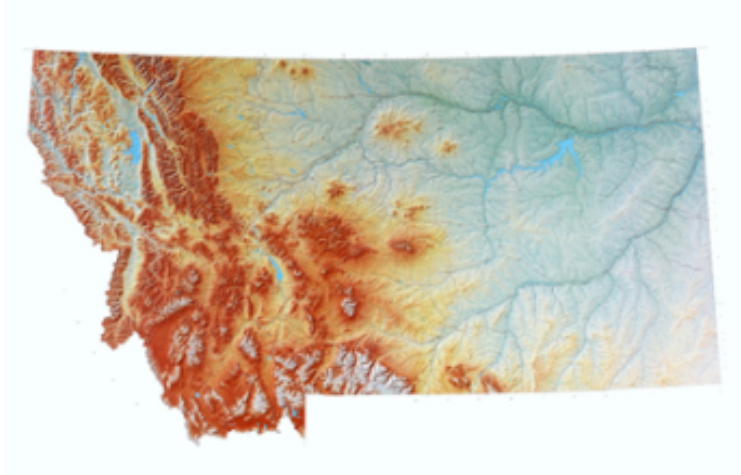




*Montana Commission on
Sentencing*



***Win-Wins for Local and State
Governments***

November 18

Council of State Governments Justice Center

Carl Reynolds, Senior Legal and Policy Advisor

Steve Allen, Senior Policy Advisor

Chris Fisher, Senior Policy Advisor

Karen Chung, Policy Analyst

David Sisk, Policy Analyst

CSG helps states craft policy and reinvestment strategies that are responsive to local needs and priorities.



PRETRIAL:

Washington's Justice Reinvestment Taskforce proposed establishing a state-funded grant program to support and incentivize counties to use a pretrial screening instrument.



LAW ENFORCEMENT:

Washington also proposed establishing a statewide competitive grant program to encourage and support local law enforcement agencies to deploy data-driven strategies to reduce property crime.



ASSESSMENTS:

Oklahoma instituted presentence mental health and substance abuse screens in jails to help guide decisions related to treatment and supervision.



LAW ENFORCEMENT:

Oklahoma established a statewide competitive grant program to support local law enforcement agencies to implement data-driven strategies to reduce violent crime.

Crafting Win-Wins for State and Local Governments



PRETRIAL:

West Virginia adopted a statewide pretrial risk assessment instrument to inform judicial decision-making.



JAIL POPULATION:

Nebraska adopted a safeguard fund to reimburse counties that demonstrated cost increases due to justice reinvestment legislation.



PROBATION AND PAROLE:

Alabama adopted intermediate sanctions to respond to technical violations on probation and parole, allowing for short jail stays prior to revocation.



MENTAL ILLNESS IN JAILS:

Both Lewis and Clark County and Missoula County in Montana have passed resolutions to join the national Stepping Up Initiative to reduce the number of people with mental illness in jails.

Justice Reinvestment in North Carolina

How State and County
Governments in North Carolina
Worked Together to Achieve
Positive Outcomes



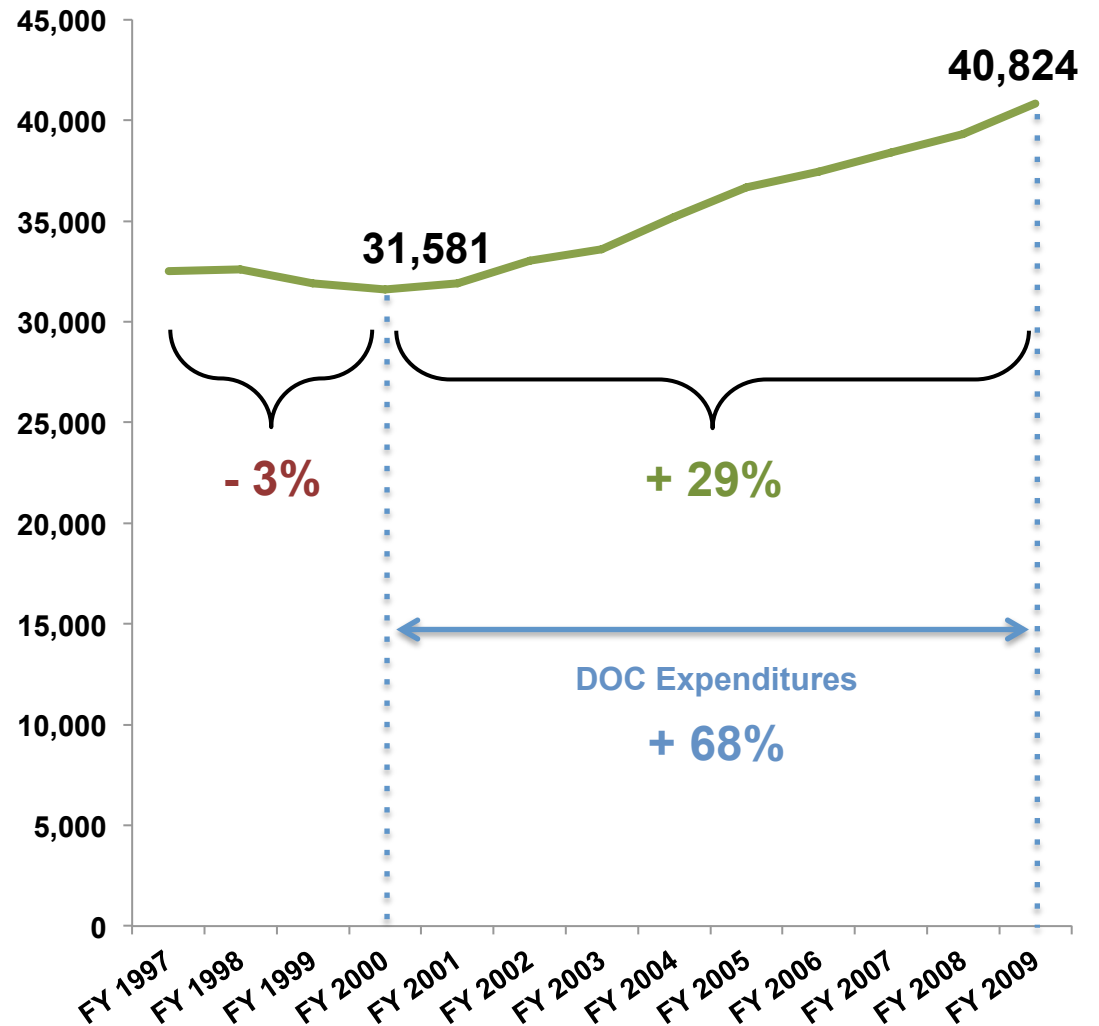
Probation revocations and misdemeanor admissions were driving prison growth in North Carolina.

53%

of prison admissions were for **probation revocations**

76 percent of revocations were people who had violated their supervision conditions.

Prison Population Growth in North Carolina



Opportunities to Transform Probation Supervision

PROBLEM: a large number of people were failing on probation and adding pressure to jails and prisons.

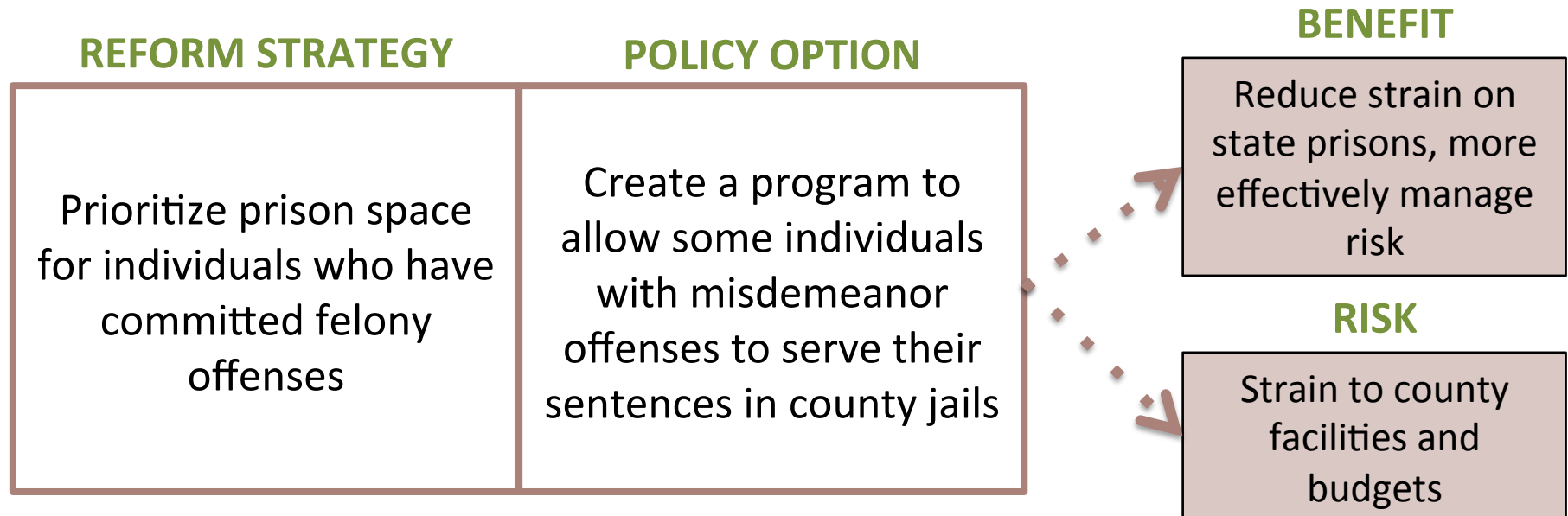
CAUSE: few meaningful graduated sanctions for minor condition violations.



Opportunities to Address Misdemeanor Sentencing

PROBLEM: individuals with misdemeanor offenses were housed in prisons designed for more those with serious offenses.

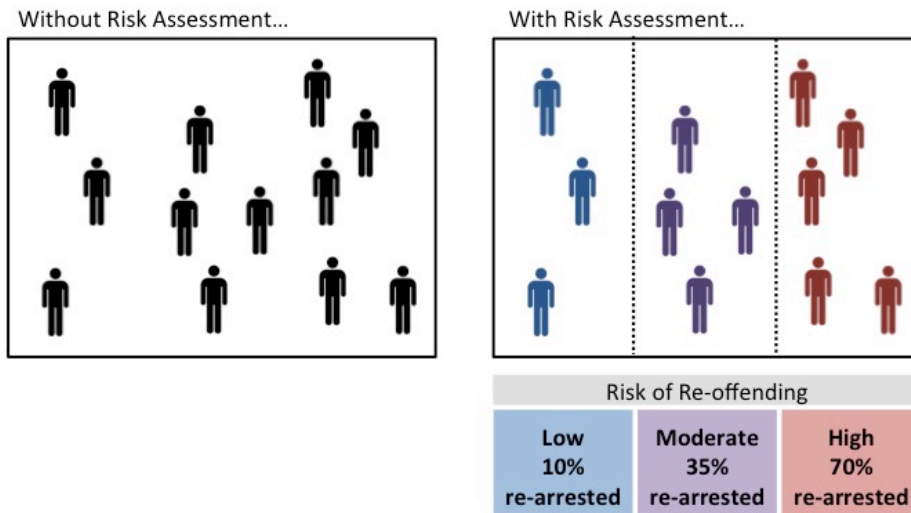
CAUSE: statutory structure requiring all sentences over 90 days be served in state prison.



Justice reinvestment's consensus-based approach led to a partnership between the state and counties.

SUPERVISION SOLUTIONS

- Required usage of risk assessment/response
- Established funding strategy for treatment programs
- Invested averted spending in hiring 175 new probation officers to implement policy



SENTENCING SOLUTIONS

- Created the Statewide Misdemeanor Confinement Program, allowing some individuals with misdemeanor offenses to serve sentences in county jails
- Created an opt in for sheriffs, those with bed capacity and interest could choose to participate
- Created a funding stream to reimburse counties on a per-bed basis

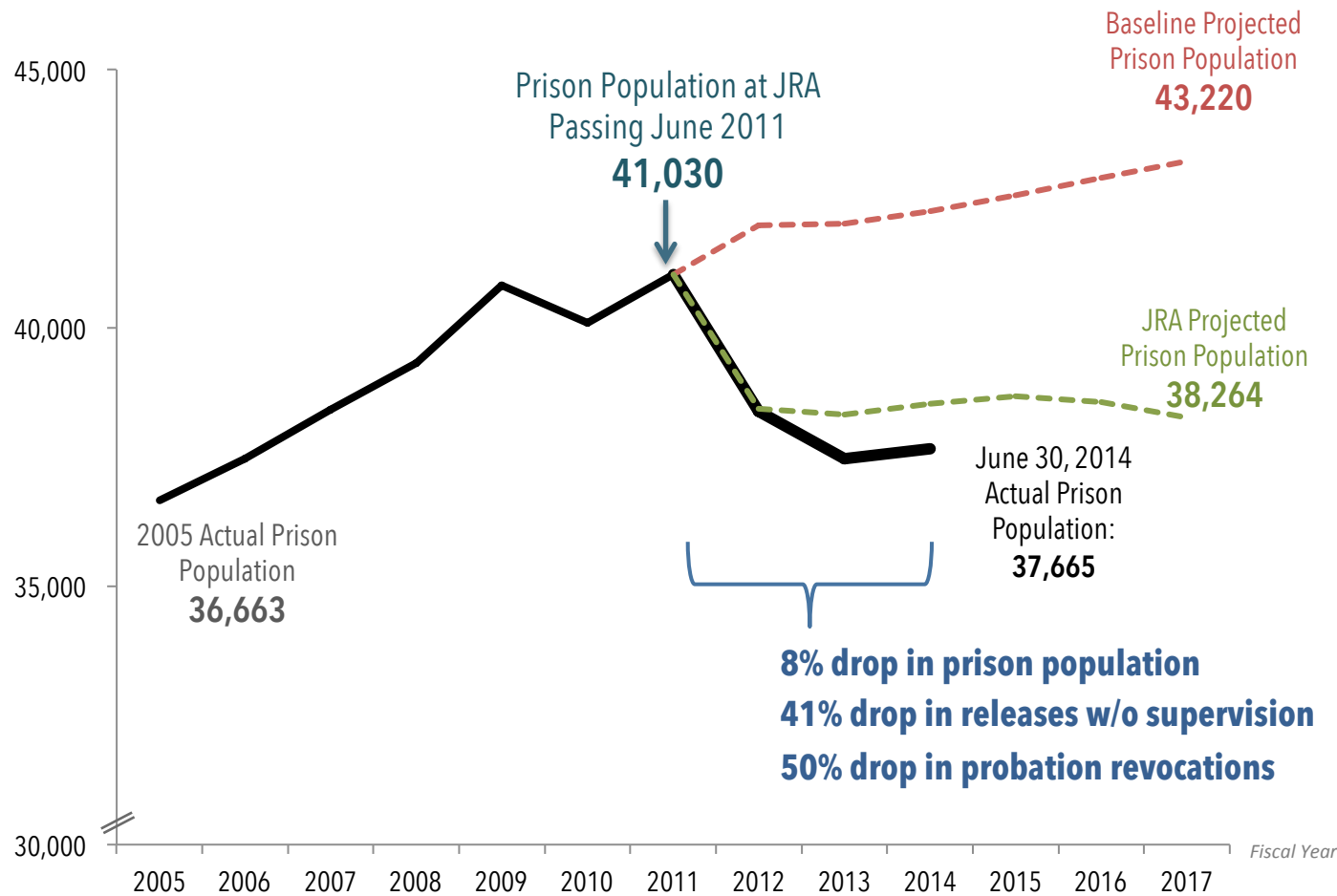


Endorsed by the North Carolina Sheriff Association

Outcomes from North Carolina's justice reinvestment policies exceeded projections for cost savings and population reductions.



Outcomes



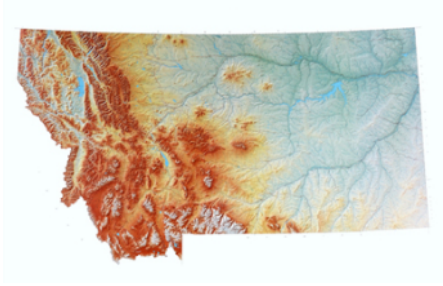
\$560m
 averted costs and savings by
 FY2017

11
 prisons
 closed since 2011

175
 new probation officers in
 FY2014 & FY2015

11%
 drop in crime between
 2011-2013

Thank You



Karen Chung, Policy Analyst
kchung@csg.org

JUSTICE★CENTER
THE COUNCIL OF STATE GOVERNMENTS

[CSGJUSTICECENTER.ORG/SUBSCRIBE](https://csgjusticecenter.org/subscribe)

This material was prepared for the State of Montana. The presentation was developed by members of the Council of State Governments Justice Center staff. Because presentations are not subject to the same rigorous review process as other printed materials, the statements made reflect the views of the authors, and should not be considered the official position of the Justice Center, the members of the Council of State Governments, or the funding agency supporting the work.