

**Small acreages with agriculture
property classifications**

Karl Christians
President, Lewis & Clark County Farm Bureau
Small acreage owner
East Helena Valley

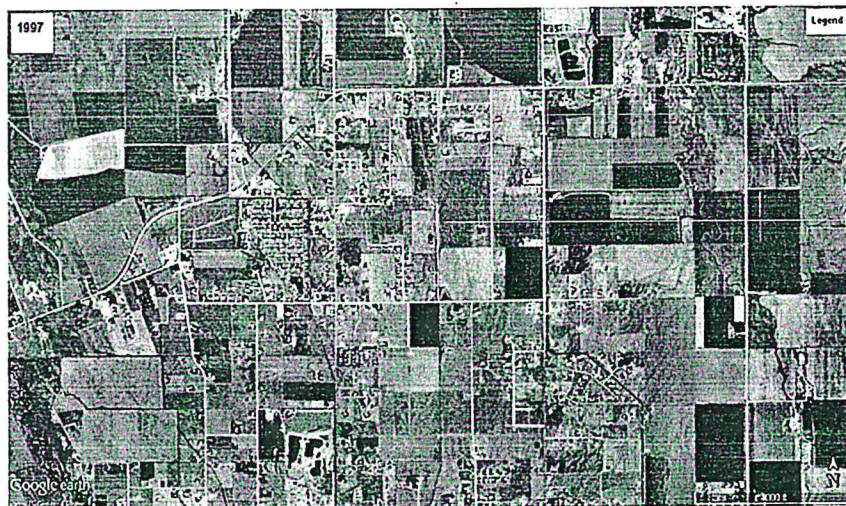
Small acreage Ag Production in Helena Valley:

- Beef Cattle
 - Feeder calves
 - Fat cattle
 - Replacement heifers
 - Bred heifers
 - Bred cows
- Hogs
- Sheep
- 4-H beef, lambs, pigs
- Horses
- Small Grains
 - Wheat, barley, oats, malt barley
 - Future pulse crops
- Hay
 - Alfalfa, grass alfalfa
 - Grain hay
 - Cover crop hay
- Cover crop/soil health
- Bees/honey

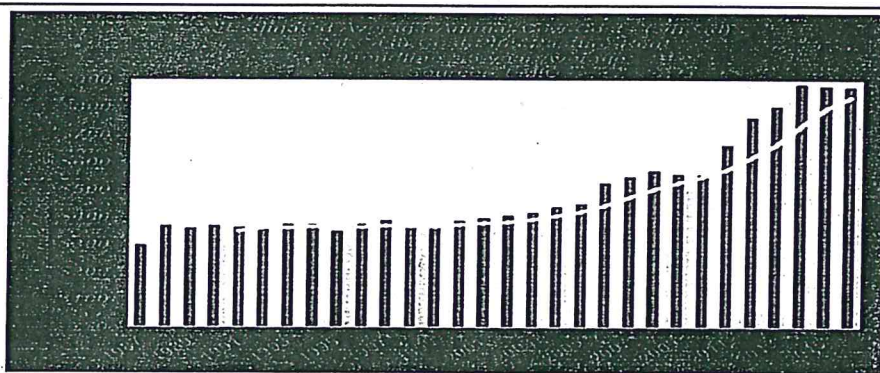
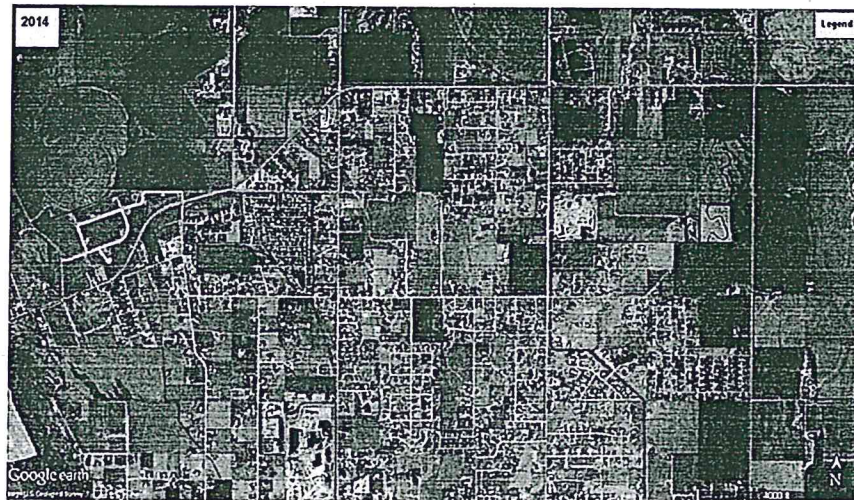
Benefits of small acreages and the Ag land exemption:

- Added income
- Way of Life
- Kids learn and experience:
 - Agriculture
 - How to produce food
 - Work ethic
 - Responsibility
 - Leadership roles
- Many utilize HVID
 - Many acres are irrigated
 - Keep the irrigation district viable
 - Recharges the ground water for urban use
 - Provide water for special projects such as, waterfowl nesting, soccer fields, wetland habitat, in-stream flows for Prickly Pear Creek
- Natural resource benefits
 - Reduce noxious weeds
 - Soil health
 - Reduced erosion
 - Wildlife
- Many many more benefits

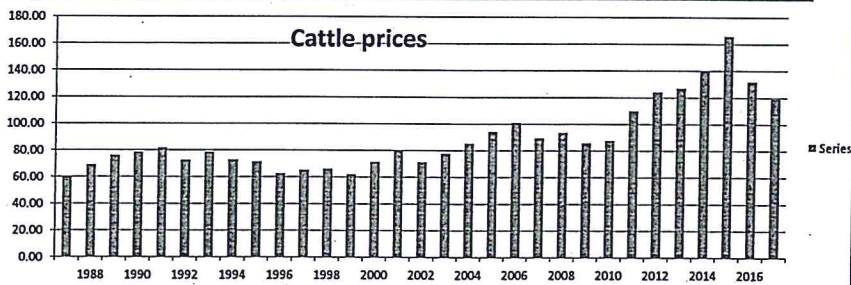
Aerial of a portion of Valley in 1997



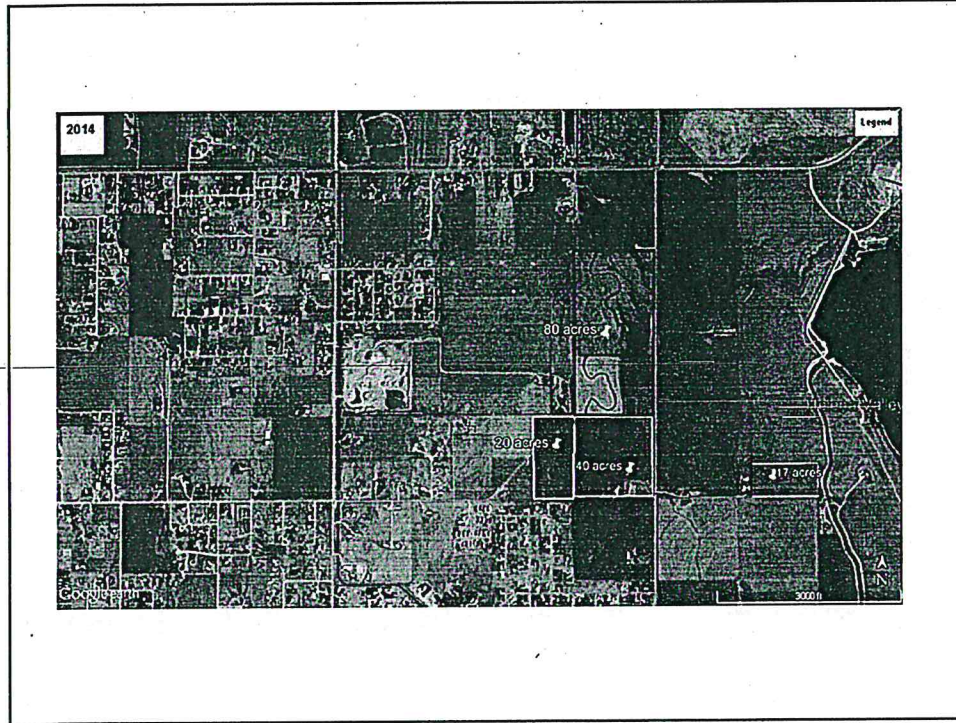
Aerial of a portion of Valley in 2014



5931



Source: Beef Magazine, Mar 2016 & Beef2live, Nov 2017



Negative repercussions with NO Ag land exemption:

- Small acreages would be subdivided
- Less food production
- Increased in noxious weeds
- Increased subdivision of current irrigated ground
 - Less families involved in agriculture
 - Less kids learning about agriculture
 - Less irrigation resulting in
 - Less ground water recharge
 - Less water for special projects such as, waterfowl nesting, soccer fields, wetland habitat, in-stream flows for Prickly Pear Creek
- Less wildlife habitat
- Less income to many families, thus less income tax revenue.