

CUSTER GALLATIN NATIONAL FOREST
Yellowstone and Bozeman Ranger Districts

Order No. 01-11-00-19-02

FOREST ORDER

National Forest System Roads, Trails and Arcas

Pursuant to 36 Code of Federal Regulations 261.50 (a) & (b) the following restrictions are in effect on the Custer Gallatin National Forest. These restrictions are in addition to those enumerated in Subpart A, Part 261, Title 36 Code of Federal Regulations, and become effective when signed and will remain in effect for one year and may be reissued.

36 CFR 261.56 – Use of Vehicles Off National Forest System Roads:

When provided by an order, it is prohibited to possess or use a vehicle off National Forest System roads. [36 CFR 261.56]

For the purposes of this order, it is prohibited to use or possess any motor vehicle (including but not limited to motorcycles, ATVs, 4x4 vehicles) or bicycle in the Hyalite Porcupine Buffalo Horn (HPBH) Wilderness Study Area (WSA) (as described by Public Law 95-150) and displayed on the attached map exhibit. Use or possession of these vehicles is prohibited yearlong, except on roads or trails that are specifically designated as open during specific time periods as listed below. See the map exhibit attached to this order.

36 CFR 261.55 – National Forest System Trails:

Using any type of vehicle prohibited by the order. [36 CFR 261.55 (b)]

For the purposes of this order, it is prohibited to use or possess any motor vehicle (including but not limited to motorcycles, ATVs, 4x4 vehicle) or bicycle off of a designated open trail within the HPBH WSA. Use or possession of these vehicles is prohibited yearlong, except on trails that are specifically designated as open during specific time periods as listed below. See the map exhibit attached to this order.

Bicycles:

- A. The following trails are designated as open to bicycles year long. Bicycles must stay on the designated open trail, cross country travel is prohibited. Designated open trails include: West Pine #139; North Dry Divide #135 from the trailhead in T. 4 S. R.8E. Sec. 30 northwest approximately two miles to the junction with the West Pine Trail #139 in the northwest quarter of Section 24; Donahue #183, Blackmore #423; South Cottonwood #422; History Rock # 424; Storm Castle Ridge #417; Twin Cabin #46; First Creek Cutoff #466; Hidden Lakes Cutoff #194; Hidden Lakes #179; Hidden Lake Divide #66; Storm Castle #185, Porcupine #199.
- B. The following trails are designated as open to bicycles from June 16 through March 31: Porcupine Creek #34 and Buffalo Horn #1. Bicycles are prohibited seasonally on these trails from April 1 to June 15, to protect the trail resource. Bicycles must stay on designated open trails, cross country travel is prohibited.
- C. The following trails are designated as open to bicycles yearlong, except that bicycles are prohibited on specific days from July 16 to September 4 (also see Gallatin NF Order # 08-11-00-01) Bicycles must stay on the following designated trails, cross country travel is prohibited:
 - a. The East Fork of Hyalite Trail #434 is designated as open to bicycles only on Tuesday, Wednesday, Thursday, Friday and Saturday from July 16th – September 4th. Bicycles are prohibited on the East Fork Hyalite Trail #434 on Sunday and Monday between July 16th and September 4th.
 - b. The Hyalite Trail #427 is designated as open to bicycles only on Sunday, Monday, Tuesday, Wednesday, and Thursday from July 16 – September 4. Bicycles are prohibited on the Hyalite Trail on Friday and Saturday from July 16 – September 4. This trail is designated as open to bicycling from the trailhead in T.5S., R.6E., Sec. 34 south to the junction with the Storm Castle Trail #185 in the northwest quarter of Sec. 23, T.5S., R.6E. only. Bicycles are prohibited yearlong on the Hyalite Trail #434 south of this junction. See the map exhibit attached.

Bicycles are defined as a vehicle with two wheels in tandem, propelled by foot pedals, and having handlebars for steering.

Motorcycles:

- A. The following trails are designated as open to motorcycles from July 16 – September 4. Motorcycles must stay on the designated trail, cross country travel is prohibited. See the attached map exhibit
 - a. Buffalo Horn #1; Porcupine #199; Porcupine Creek #34; Ramshorn Lake #160; Hidden Lakes Divide #66; Hidden Lakes Cutoff # 194; Hidden Lakes 179; and Storm Castle Creek #185.
- B. The following trails are designated as open to motorcycles from July 16 – September 4, except on specific days noted below:
 - a. The East Fork of Hyalite Trail #434 is designated as open to motorcycles only on Wednesday, Thursday, Friday and Saturday from July 16th – September 4th. Motorcycles are prohibited on the East Fork Hyalite Trail #434 on Sunday, Monday and Tuesday between July 16th and September 4th.
 - b. The Hyalite Trail #427 is designated as open to motorcycles only on Sunday, Monday, Tuesday, Wednesday, and Thursday from July 16 – September 4. Motorcycles are prohibited on the Hyalite Trail on Friday and Saturday from July 16 – September 4. This trail is designated as open to motorcycling from the trailhead in T.5S., R.6E., Sec. 34 south to the junction with the Storm Castle Trail #185 in the northwest quarter of Sec. 23, T.5s., R.6E. only. Motorcycles are prohibited yearlong on the Hyalite Trail #434 south of this junction. See the map exhibit attached.

Motorcycles are defined as a two-wheeled motor vehicle 50 inches or less in width on which two wheels are not side-by-side but in-line with the direction of travel.

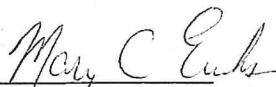
These temporary restrictions are necessary to comply with a court ordered injunction for the HPBH Wilderness Study Area.

Exemptions:

Pursuant to 36 CFR 261.50(e), the following persons are exempt from this order:

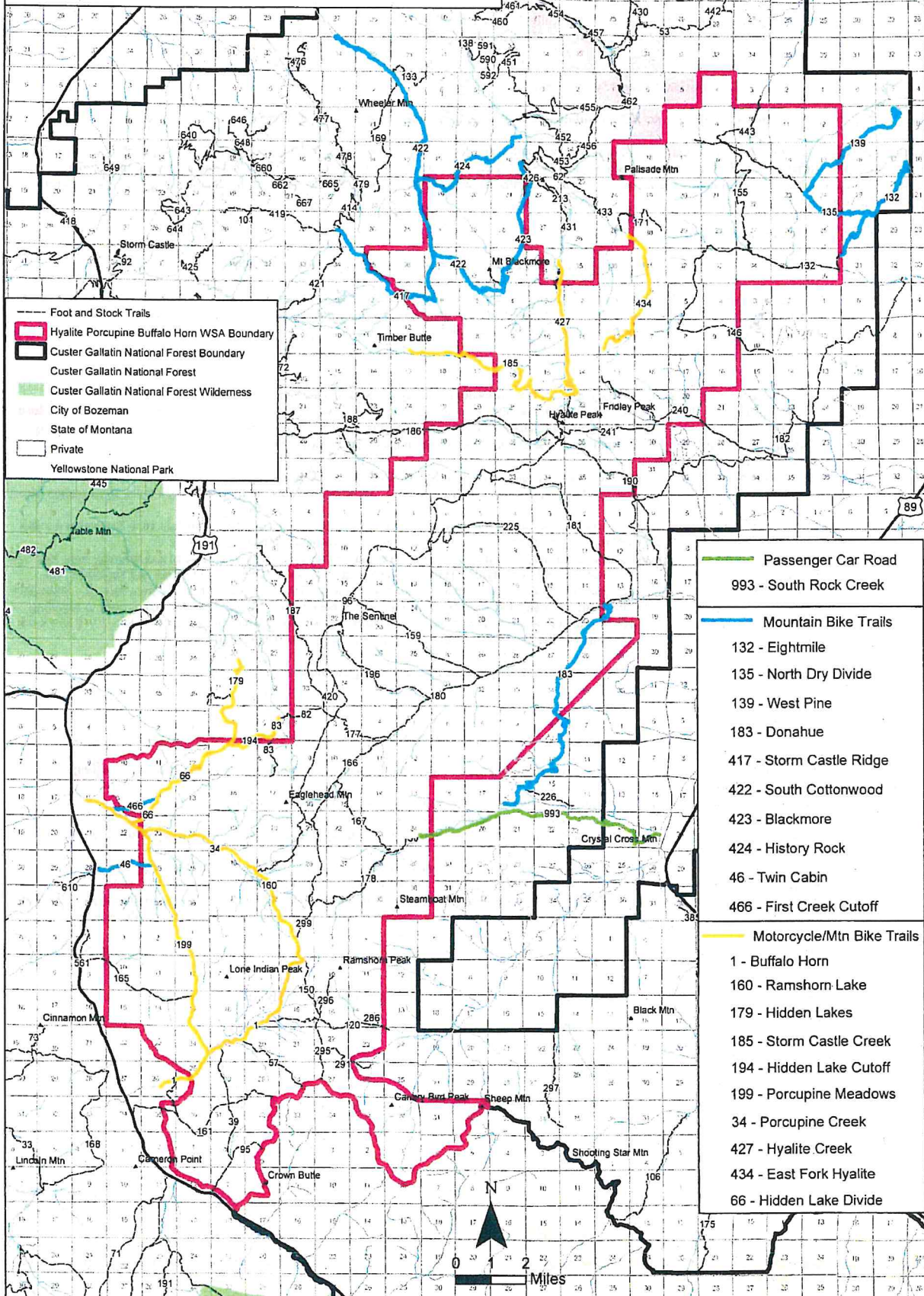
1. Persons with a permit specifically authorizing the otherwise prohibited act or omission.
2. Any Federal, State, or local officer, or member of an organized rescue or firefighting force in the performance of an official duty.

Done at Bozeman, Montana this 12th day of August, 2019.


MARY C. ERICKSON
Forest Supervisor
Custer Gallatin National Forest

Violations of these Prohibitions are punishable by a fine of not more than \$5,000 for an individual or \$10,000 for an organization, or imprisonment for not more than six months, or both. [16 USC 551 and 18 USC 3559 and 3571].

**Interim Summer Trails
 Hyalite Porcupine Buffalo Horn
 Wilderness Study Area
 Custer Gallatin National Forest
 Special Order Number 01-11-00-19-02**



CUSTER GALLATIN NATIONAL FOREST
Bozeman, Montana

FOREST ORDER

Use of Vehicles off National Forest System Roads
National Forest System Trails

Pursuant to 36 Code of Federal Regulations (CFR) 261.50 (a) & (b) the following acts are prohibited in the Hyalite Porcupine Buffalo Horn (HPBH) Wilderness Study Area as described below and depicted on the attached map (Attachment A).

36 CFR 261.56 – Use of Vehicles off National Forest System Roads:

- 1.) It is prohibited to possess or use a vehicle off National Forest System roads.**
[36 CFR 261.56]

For the purposes of this prohibition a vehicle is defined as a snowmobile, ATV/UTV, tracked ATV/UTV, or any other over-snow vehicle.

36 CFR 261.55 – National Forest System Trails:

- 1.) Using any type of vehicle prohibited by the order. [36 CFR 261.55 (b)]**

For the purpose of this prohibition a vehicle is defined as an ATV/UTV or tracked ATV/UTV.


These prohibitions are in addition to the general prohibitions in 36 CFR Part 261, Subpart A.

Pursuant to 36 CFR 261.50(e), the following persons and or acts are exempt from this order:

1. Persons with a permit specifically authorizing the otherwise prohibited act or omission.
2. Any Federal, State, or local officer, or member of an organized rescue or firefighting force in the performance of an official duty.
3. Snowmobiles are allowed in the area depicted as the WSA Snowmobile Open Area on Attachment A from December 2 – April 15.
4. Snowmobiles may be operated within 300' of either side of the Big Sky Snowmobile Trail (NFST #900)

Done at Bozeman, Montana this 10th day of December, 2018.

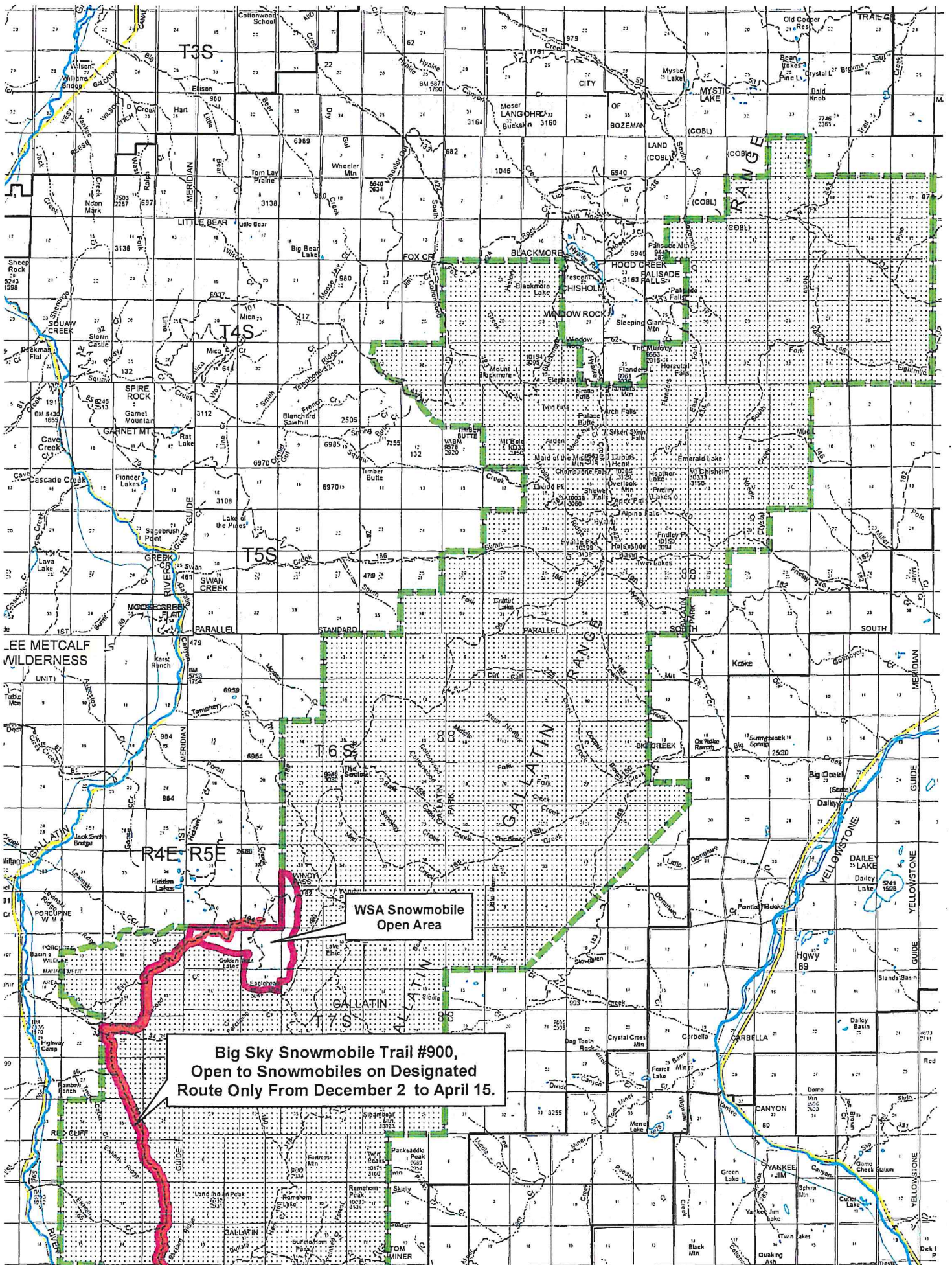
Effective for one year from this date signed.



MARY C. ERICKSON

Forest Supervisor
Custer Gallatin National Forest

Penalty: Violations of these Prohibitions are punishable by a fine of not more than \$5,000 for an individual or \$10,000 for an organization, or imprisonment for not more than six months, or both. [16 USC 551 and 18 USC 3559 and 3571].



WSA Snowmobile
Open Area

Big Sky Snowmobile Trail #90,
Open to Snowmobiles on Designated
Route Only From December 2 to April 15.