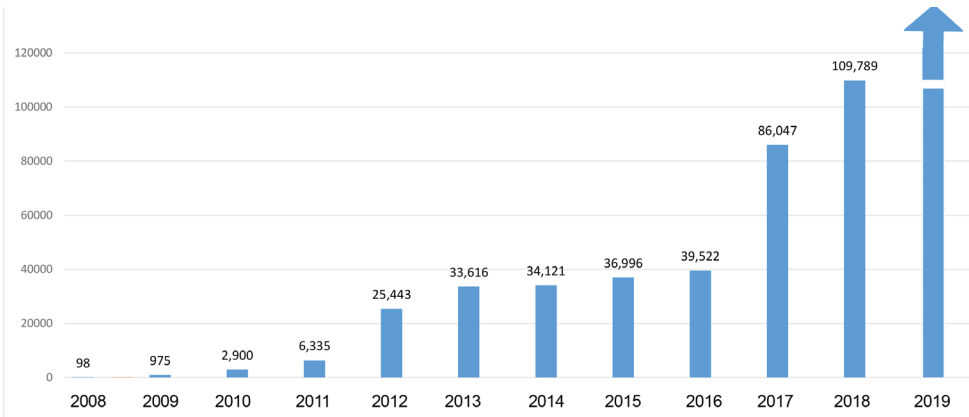


Aquatic invasive species (AIS) are a significant threat to Montana’s economy and water resources. FWP works closely with partners to manage and coordinate AIS prevention, early detection and outreach efforts. These partnerships have strengthened the AIS effort state-wide. The program continues to evaluate operations and institute changes to make the AIS program more effective and efficient.

AIS Prevention

Watercraft inspection stations are Montana’s first line of defense against the introduction of AIS.

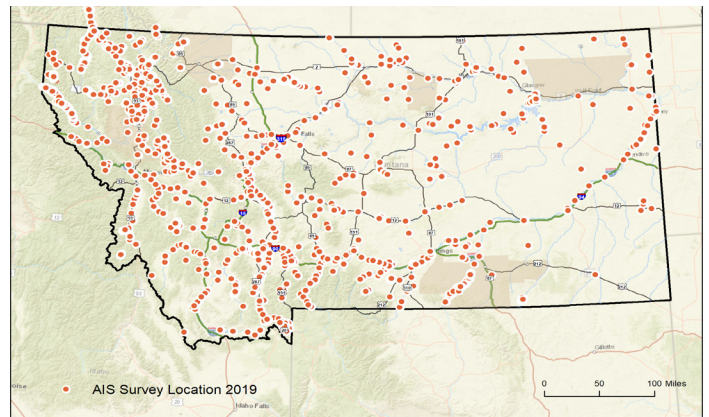
Watercraft inspections in Montana have more than doubled since 2016. The state has more than 35 watercraft inspection stations operated in partnership with ten agencies.



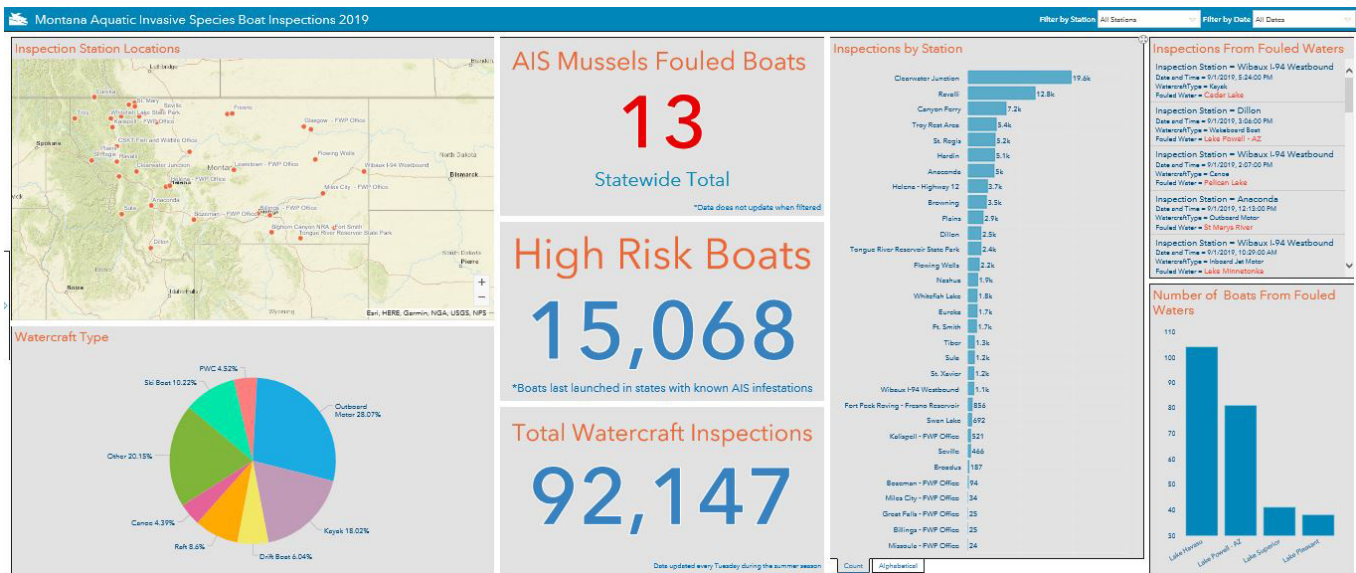
- ▶ To date, more than 104,000 watercraft have been inspected in 2019. Stations will continue operation through October at some locations.
- ▶ Intercepted 14 boats with zebra/quagga mussels.
- ▶ Decontaminated more than 100 boats transporting aquatic plants.

Changes to the Watercraft Inspection program in 2019 included:

- ▶ Expanded hours of operation.
- ▶ Increased partner participation including:
 - » New stations operated by Powder River CD at Broadus and Bighorn CD south of St Xavier.
 - » Existing station operation contracted with CSKT, Garfield CD and McCone CD.
 - » Increased local community involvement, engagement and enforcement.
 - » Consistent protocols, materials and data collection implemented state-wide.
- ▶ Expanded regional coordination to address transport of mussels from source waters.



Watercraft inspection data is now available to view on the new AIS Dashboard. Go to www.CleanDrainDryMT.com and click AIS Dashboard.



AIS Monitoring and Detection

Search for new AIS and monitor existing populations

Monitoring crews conduct systematic surveys of waterbodies across the state looking for new populations of AIS. AIS early detection surveys will continue through the fall of 2019.

- ▶ More than 180 waterbodies have been sampled for all taxa AIS.
- ▶ Over 1,500 plankton tow samples collected for zebra/quagga mussel larvae early detection.
- ▶ The FWP AIS lab has analyzed all high-risk samples collected this season. To date, no mussel larvae have been detected in samples from Montana.
- ▶ FWP partnered with the Flathead Lake Biological Station to conduct an enhanced invasive mussel survey on Tiber Reservoir in August. The survey utilized both molecular (eDNA) and microscopy methods. Labs are currently processing the samples.
- ▶ Eurasian watermilfoil was detected at Beaver Lake (near Whitefish) this season. Staff removed the plants and follow-up surveys continue to ensure eradication.
- ▶ Asian clams were detected in Lake Elmo (Billings). Delineation surveys are ongoing. Survey results will guide response planning.



Statewide Coordination

Cooperate among partners for a consistent and unified AIS program

- ▶ Collaborate with DNRC, MISC, UC3, Conservation Districts, Tribes, watershed group, and NGOs to implement AIS programs statewide.
- ▶ Involve partners in AIS prevention, watercraft inspection stations, and monitoring.
- ▶ Conduct a statewide information campaign using print, radio, tv, billboards, and social media.
- ▶ Provide targeted outreach materials to boaters, anglers, irrigators, and other user groups.
- ▶ Conduct educational events for organizations, teachers, and schools.



HELP STOP THE SPREAD OF INVASIVE SPECIES

Your watercraft must be inspected if:

- You encounter an open inspection station.
- You are coming into Montana from out-of-state.
- You are traveling west over the Continental Divide.
- You are launching anywhere within the Flathead Basin and your watercraft last launched on waters outside of Flathead Basin.

CleanDrainDryMT.com
Protect Our Waters Montana
406.444.2440



Plan for 2020

FWP will investigate implementing these changes to the AIS program next year:

- ▶ If there are no further detections of mussel larvae in Canyon Ferry this season, FWP will explore lifting mandatory exit inspection requirements.
- ▶ Seek to increase partner involvement with AIS prevention, early detection, and outreach.
- ▶ Explore extending inspection hours and operating season at high-risk locations.

Montana AIS Summit December 4th and 5th at Carroll College in Helena.

The inaugural AIS Summit will provide information on AIS program progress and solicit input and ideas for changes and improvements moving forward.



HELP STOP THE SPREAD OF INVASIVE SPECIES

Clean: Remove all plants and mud from boat, trailer and fishing gear.

Drain: Pull your drain plug. Before you leave the area eliminate all water from your boat and gear.

Dry: Allow time for your boat and gear to dry completely before launching somewhere else.

All watercraft must stop at inspection stations



CleanDrainDryMT.com

Protect Our Waters Montana
406.444.2440

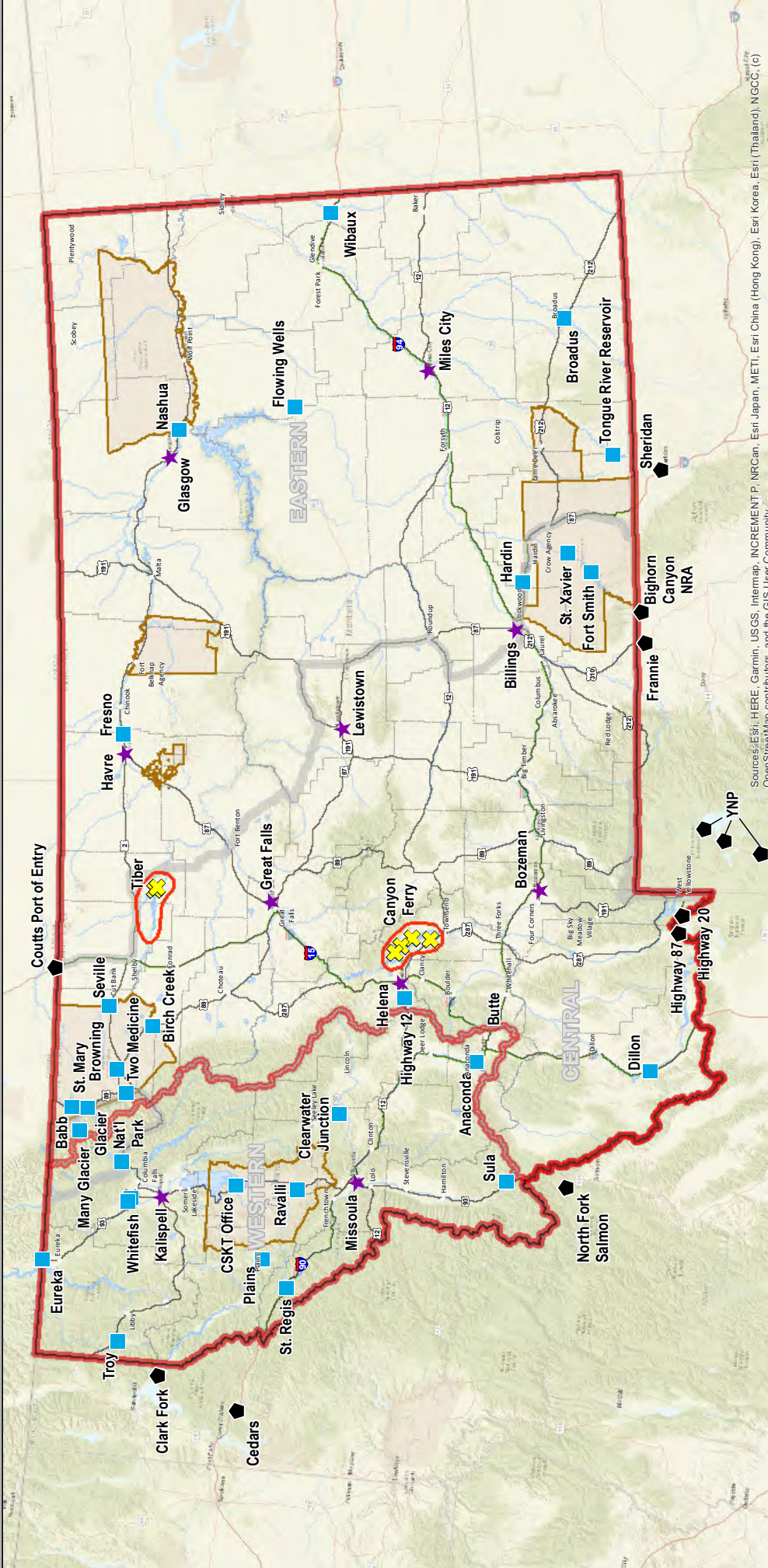
MONTANA FISH,
WILDLIFE & PARKS

Watercraft Inspection Stations	Station Manager	Vessels Inspected	Mussel Vessels	Season of Operation
Anaconda (I-90 W)	FWP	5,055	4	April 12 - Oct 13
Broadus	Powder River CD FWP Contract	194	0	July 10 - TBD
Browning (Hwy 2 W)	Blackfeet Nation FWP Contract	3,649	0	April 3 - TBD
Canyon Ferry - Goosebay	FWP	792	0	May 25 - Sept 15
Canyon Ferry - Hellgate	FWP	720	0	May 18 - Sept 15
Canyon Ferry - North	FWP	2,494	0	May 11 - Oct 13
Canyon Ferry - Silos	FWP	3,349	0	May 11 - Oct 13
Clearwater Junction (Hwy 200 E/W)	Missoula County FWP Contract	19,917	0	April 11 - Sept 30
Dillon (I-15 N)	FWP	2,553	3	April 6 - Oct 13
Eureka (Hwy 93 S)	FWP	1,730	0	May 24 - Sept 15
Flowing Wells (Hwy 200 E/W)	Garfield CD FWP Contract	2,206	1	May 18 - Oct 31
Fort Smith	Bighorn Canyon NRA	1,729	0	June 15 - Aug
Fresno Reservoir	FWP	856	0	May 17 - Aug 22
FWP Kalispell	FWP	525	0	March 13 - Oct 13
Glacier Park - Lake McDonald	NPS	10,489	0	May 11 - Oct 31
Glacier Park - Many Glacier, St. Mary & Two Medicine	NPS		0	June 1 - Sept 27
Hardin (I-90 W)	FWP	5,318	4	April 19 - Oct 13
Helena (Hwy 12 W)	FWP	3,753	1	May 18 - Oct 13
Nashua (Hwy 2 W)	McCone CD FWP Contract	1,884	0	May 18 - Oct 31
Plains (Hwy 200 E)	CSKT FWP Contract	3,037	0	May 11 - Sept 15
Ravalli (Hwy 200 N)	CSKT FWP Contract	12,989	0	March 15 - Oct 15
Seville (Hwy 2 W)	Blackfeet Nation FWP Contract	467	0	May 25 - Sept 30
St. Regis (I-90 E)	FWP	5,308	0	May 18 - Sept 15
St. Xavier (Hwy 313)	Bighorn CD FWP Contract	1,151	0	July 15 - Oct 26
Sula (Hwy 93 N)	FWP	1,266	0	May 18 - Sept 15
Swan Lake (roving)	Missoula County FWP Contract	692	0	
Tiber Marina	FWP	529	0	May 11 - Oct 13
Tiber VFW	FWP	439	0	May 11 - Oct 13
Tiber Willow Creek	FWP	95	0	May 25 - Aug 11
Tongue River	FWP	2,434	0	May 25 - Sept 29
Troy (Hwy 2 E)	FWP	5,494	0	May 25 - Sept 15
Whitefish Lake	City of Whitefish	1,781	0	May 1 - Sept 30
Wibaux (I-94 W)	Garfield CD FWP Contract	1,176	1	April 17 - Sept 20
Totals		104,071	14	



FWP Watercraft Inspection and Decontamination Stations

2019 Season



BoatInspectionStations_FY2019_Public.pdf
8/13/2019 Created by Geographic Data Services
W:\Projects\524_AIS\BoatInspectionStations_FY2019_Public.mxd



Fishing District

Statewide Defense Perimeter

Containment Zones

Columbia River Basin Defense Perimeter

Decontamination Station

Class I Inspection Station*

Class II Inspection Station**

Partner Agency Station

* Class I - Full inspection and decontamination capability
** Class II - Full inspection and decontamination capability, inspection and routing as needed

Sources: Esri, HERE, Garmin, USGS, Intermap, INCREMENT P, NRCan, Esri Japan, METI, Esri China (Hong Kong), Esri Korea, Esri (Thailand), NGCC, (c) OpenStreetMap contributors, and the GIS User Community

