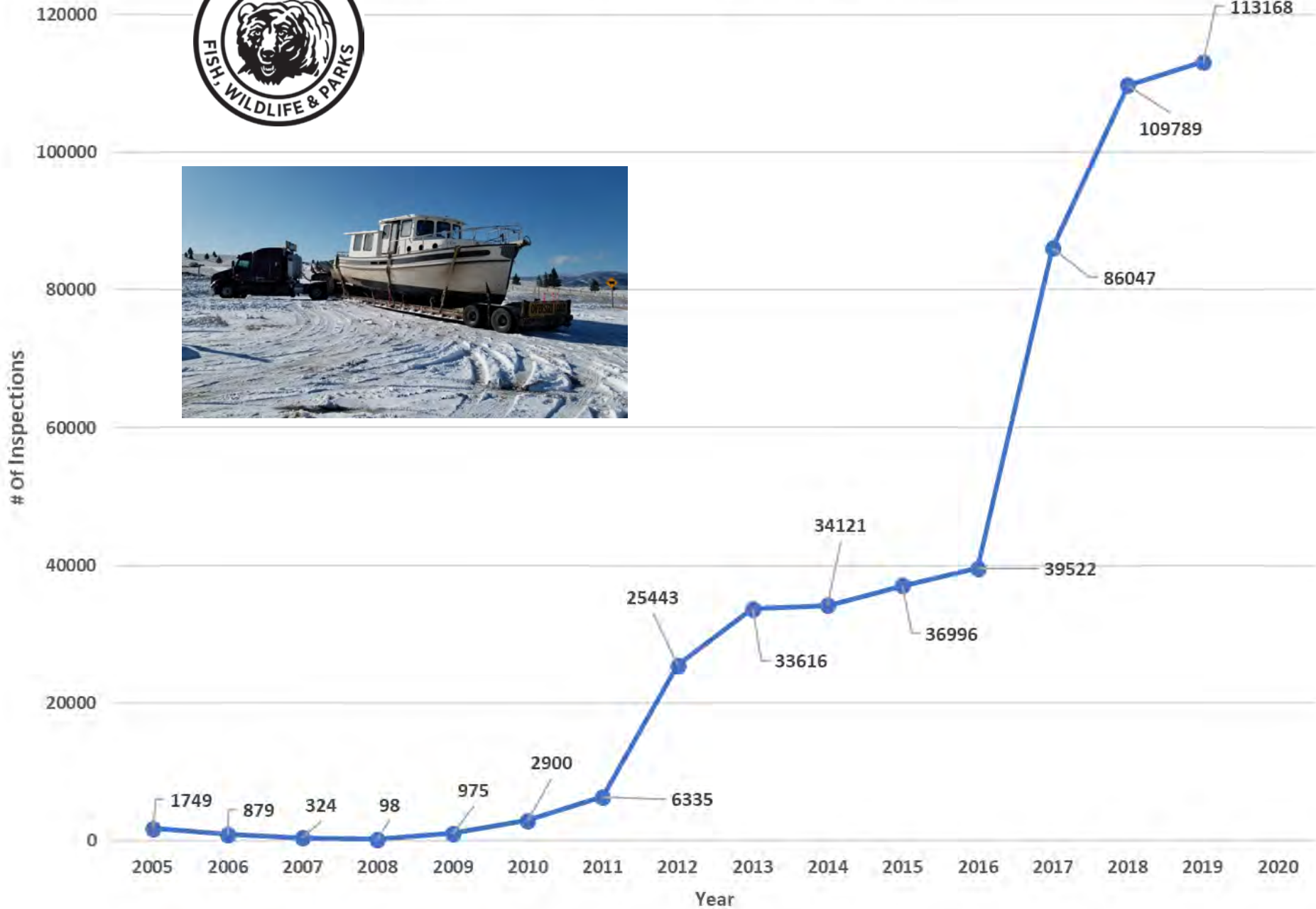


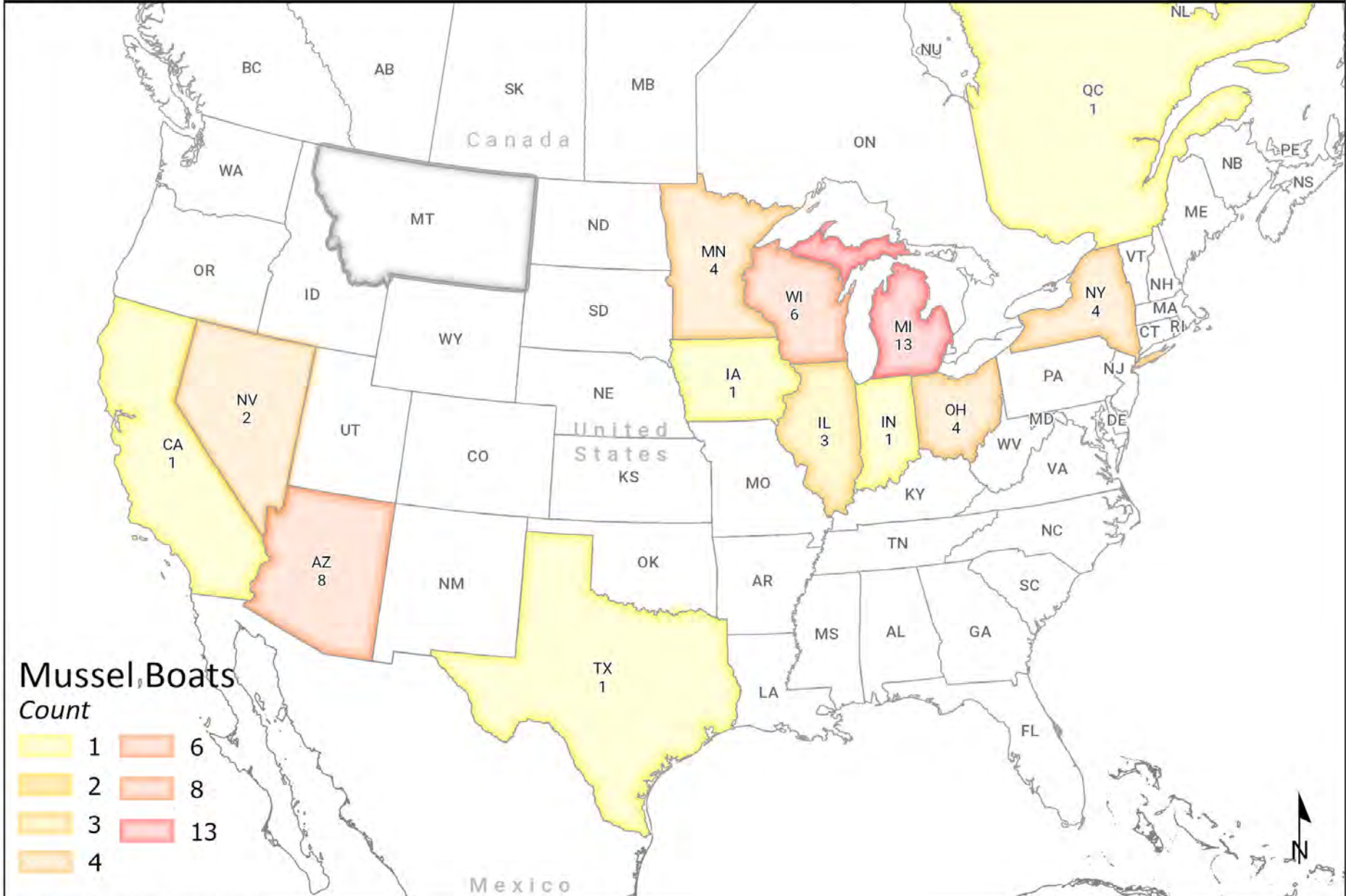
Watercraft Inspection Totals By Year



Origin and quantity of mussel boat interceptions in the State of Montana

MONTANA FWP

2017 - 2019 Boat Inspection Season



Data Collected by FWP AIS field staff during the 2019 Season.

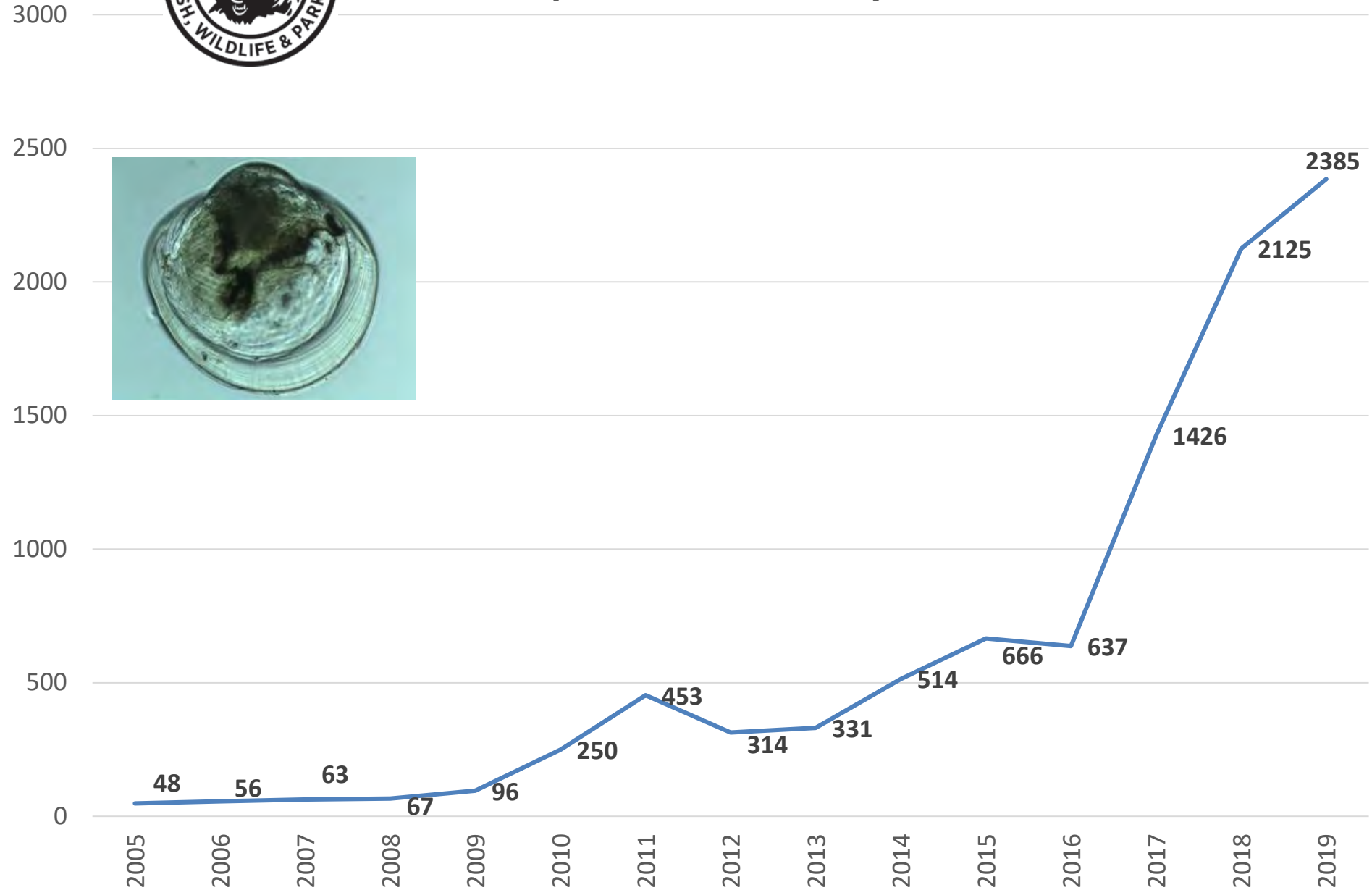
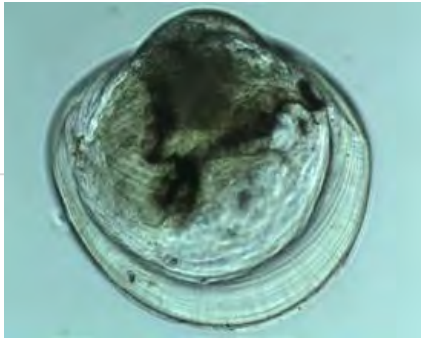
Administrative boundaries and FWP Lands data from Montana Fish, Wildlife & Parks, Helena, MT. Reference data from ESRI

ISR - 47637 RCA 12/19

0 175 350
Miles



In-State Mussel Early Detection Samples Processed by Year



FWP Watercraft Inspection and Decontamination Stations



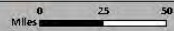
2020 Season



- Decontamination Station
- Class I Inspection Station*
- Class I Roving
- Class II Inspection Station**
- Partner Agency Station
- Statewide Defense Perimeter
- Containment Zones
- Columbia River Basin Defense Perimeter
- Fishing District



BoatInspectionStations_FY2020_Public.pdf
2/7/2020 Created by Geographic Data Services
W:\Project\524_AIS\BoatInspectionStations_FY2020_Public.mxd



* Class I - full life cycle and decontamination capability
** Class II - full assessment, screening, inspection and routing as needed



7 Mussel Fouled Vessels 2020

