

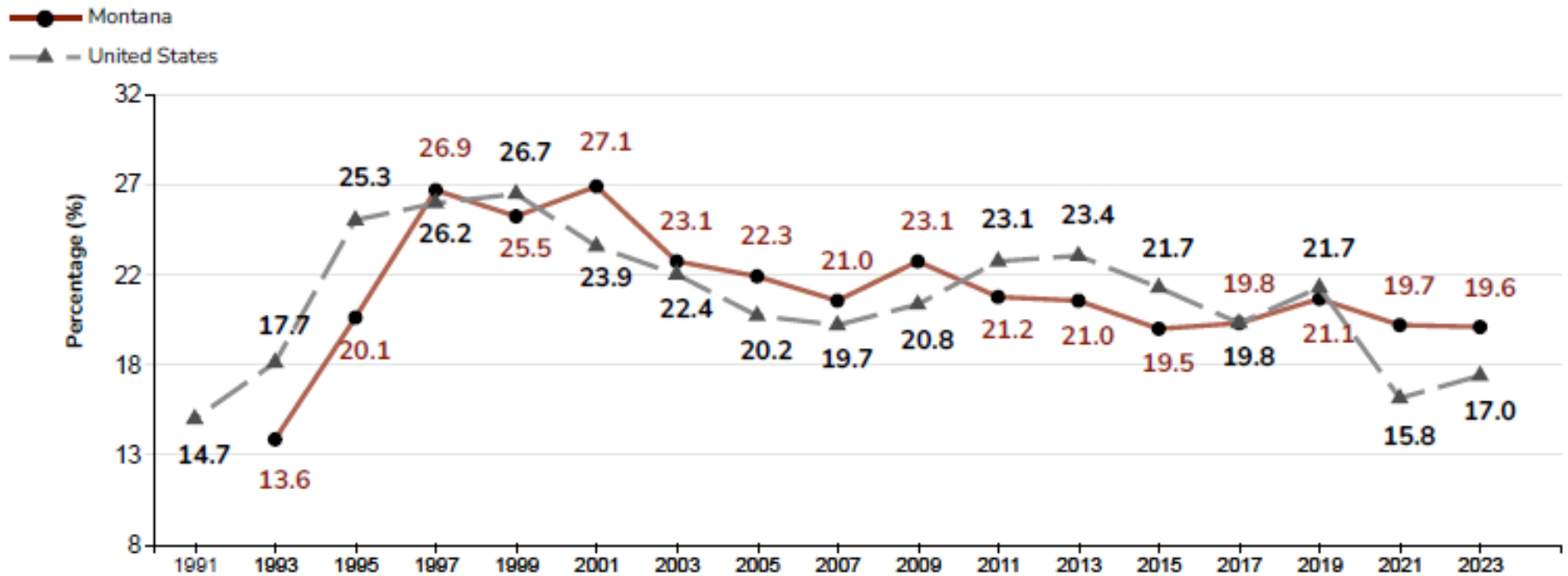
Youth Risk Behavior Surveillance System (YRBSS)

A national survey, called the Youth Risk Behavior Survey (YRBS), conducted by CDC that includes high school students from both private and public schools within the U.S.

Surveys conducted by departments of health and education at the state, tribal, territorial, or local levels of their respective public high school students



High School Students Who Currently Use* Marijuana



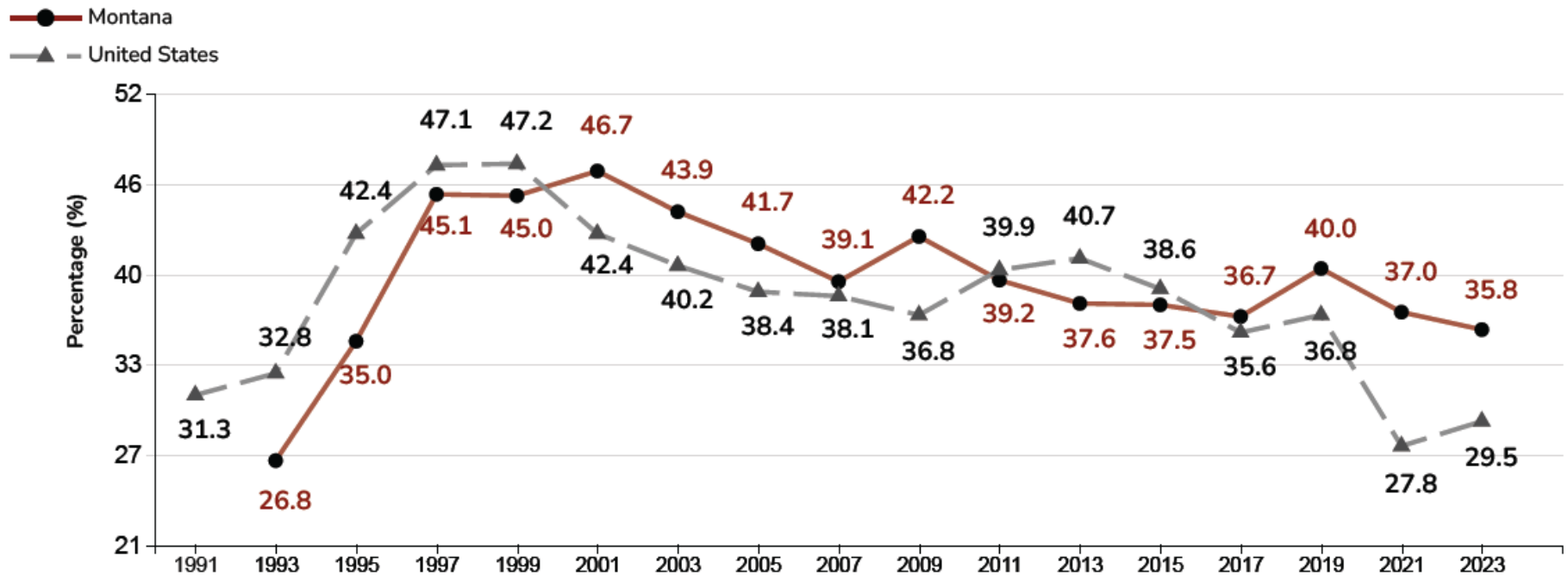
* one or more times during the 30 days before the survey.

Retail Sales in Montana begin 1/1/2022

Centers for Disease Control and Prevention (CDC). 1991-2023 High School Youth Risk Behavior Survey Data. Available at <http://yrbs-explorer.services.cdc.gov/>. Accessed on 12/22/2025.



High School Students Who Ever Used Marijuana



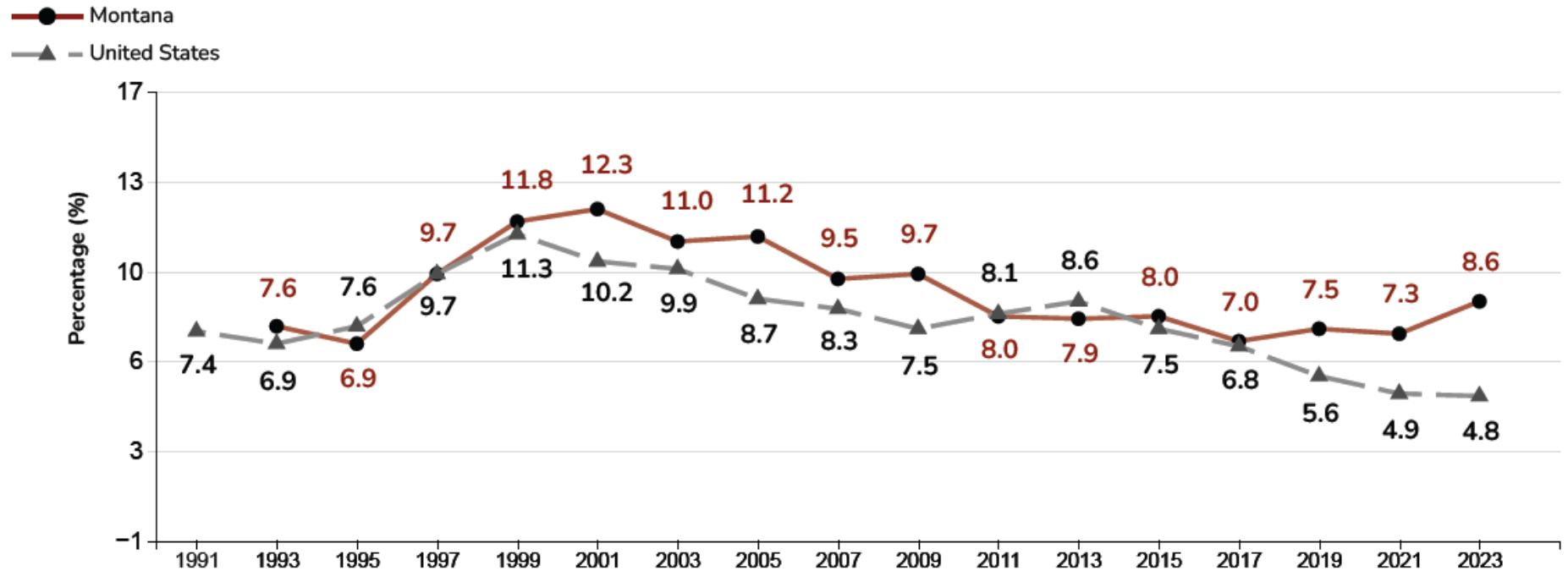
* one or more times during their life.

Retail Sales in Montana begin 1/1/2022

Centers for Disease Control and Prevention (CDC). 1991-2023 High School Youth Risk Behavior Survey Data. Available at <http://yrbs-explorer.services.cdc.gov/>. Accessed on 12/22/2025.



High School Students Tried Marijuana Before Age 13



Retail Sales in Montana begin 1/1/2022

Centers for Disease Control and Prevention (CDC). 1991-2023 High School Youth Risk Behavior Survey Data. Available at <http://yrbs-explorer.services.cdc.gov/>. Accessed on 12/22/2025.

National Survey on Drug Use and Health (NSDUH)

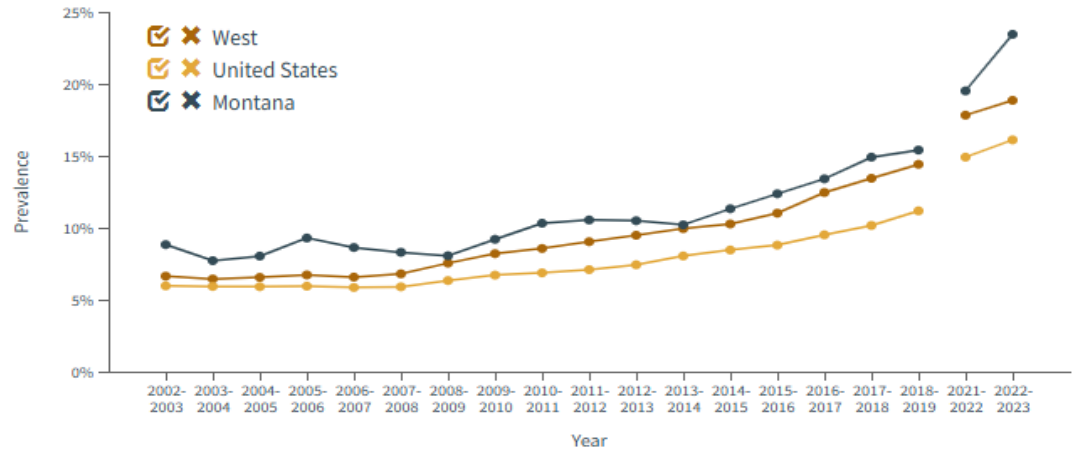
The National Survey on Drug Use and Health (NSDUH) provides up-to-date information on tobacco, alcohol, and drug use, mental health and other health-related issues in the United States.

NSDUH is directed by the Substance Abuse and Mental Health Services Administration (SAMHSA), an agency in the U.S. Department of Health and Human Services (HHS).



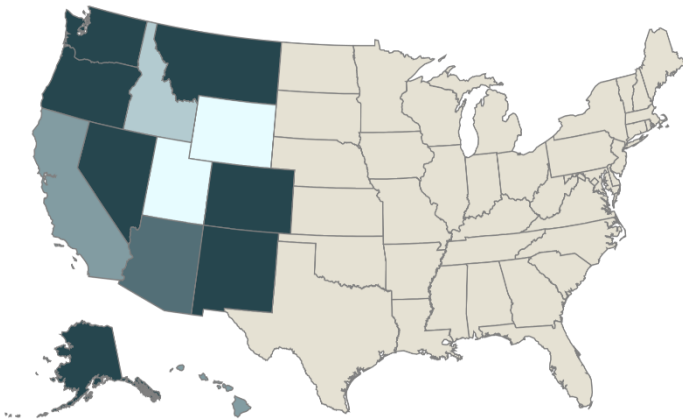
Marijuana Use in Past Month (Adults 18+)

Marijuana Use in Past Month Among Adults Aged 18 or Older, by Geographic Area



NOTE: Estimates from 2021-2022 are not comparable to estimates from previous years due to changes in NSDUH survey methodology.

Marijuana Use in Past Month Among Adults Aged 18 or Older, by State: 2022-2023



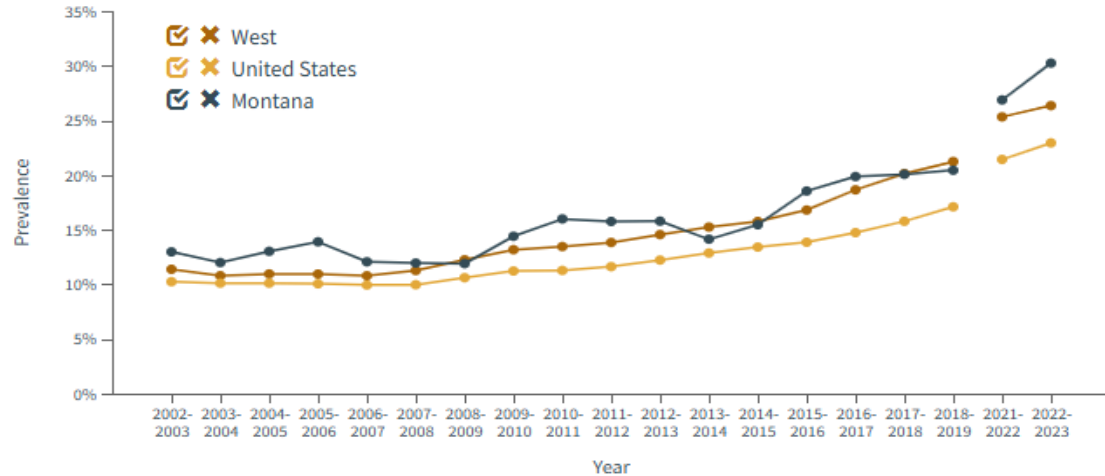
Percentages of Persons

- 21.85% - 26.67%
- 17.18% - 21.84%
- 14.52% - 17.17%
- 12.45% - 14.51%
- 10.96% - 12.44%

NSDUH State Estimates, Substance Abuse and Mental Health Services Administration, <https://datatools.samhsa.gov/saes/state>. Accessed 12/30/2025.

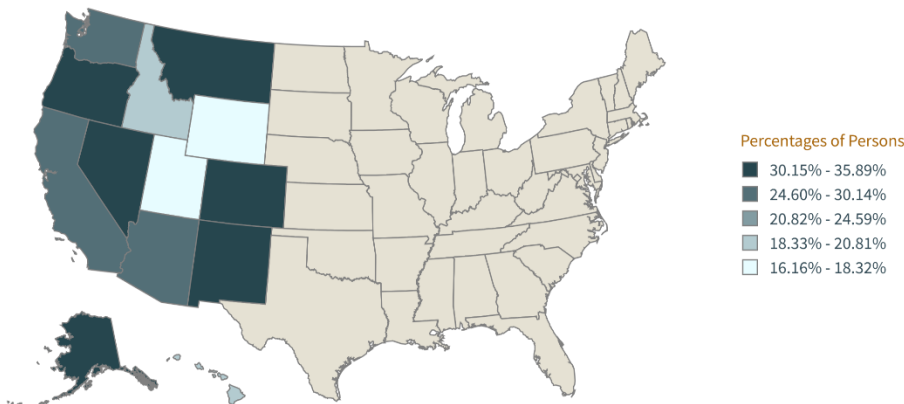
Marijuana Use in Past Year (Adults 18+)

Marijuana Use in Past Year Among Adults Aged 18 or Older, by Geographic Area



NOTE: Estimates from 2021-2022 are not comparable to estimates from previous years due to changes in NSDUH survey methodology.

Marijuana Use in Past Year Among Adults Aged 18 or Older, by State: 2022-2023



NSDUH State Estimates, Substance Abuse and Mental Health Services Administration, <https://datatools.samhsa.gov/saes/state>. Accessed 12/30/2025.