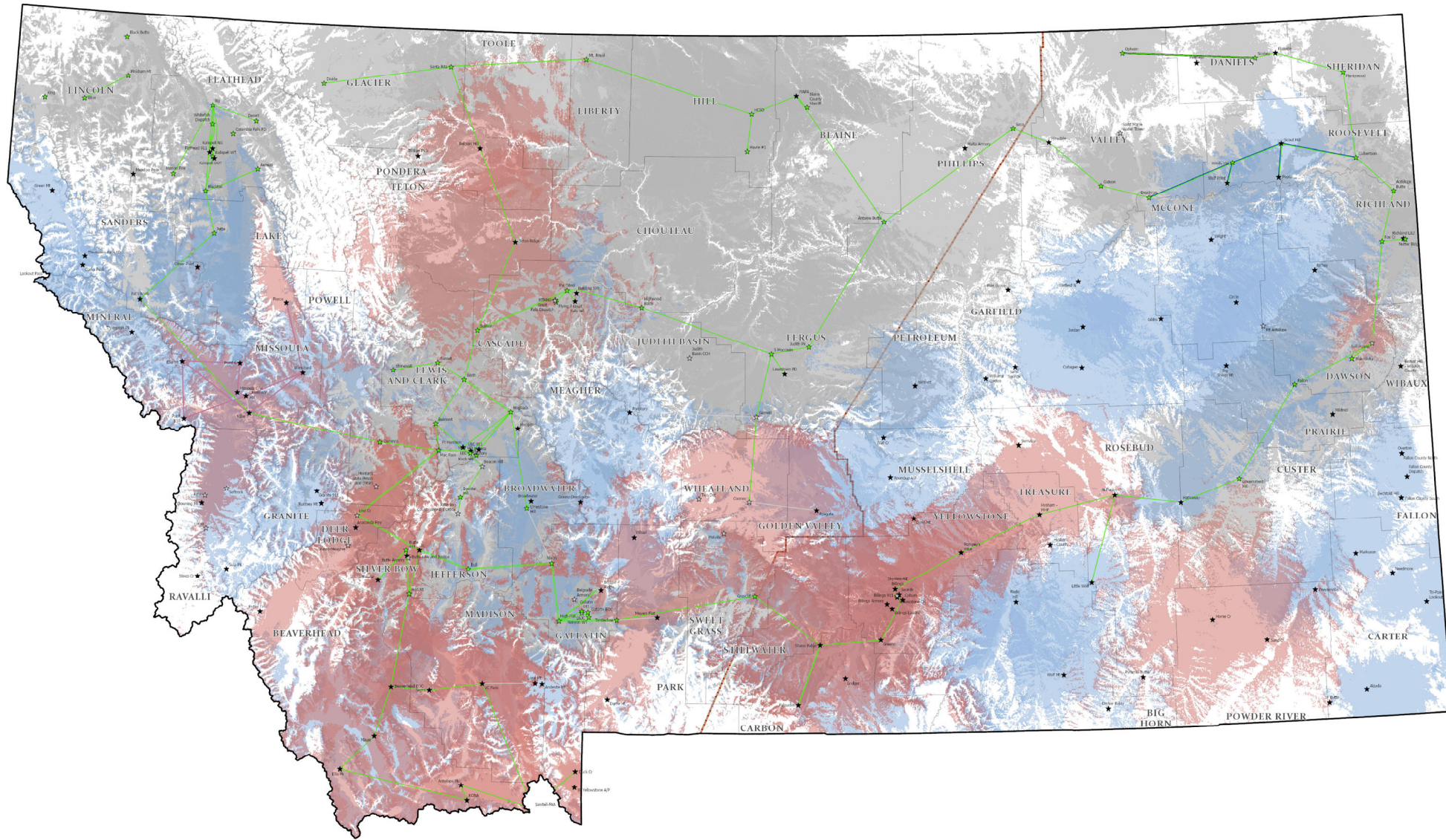


PUBLIC SAFETY COMMUNICATIONS SYSTEM

Trunked Status & Mobile Radio Outbound Coverage with Proposed Phase II & Phase III Additions 2/5/2025



- Legend**
- Trunk Status**
- ★ Conventional Use
 - ☆ Future
 - ★ Operational
 - ☆ Intentional
- Microwave Hops**
- Complete
 - Complete-Expanded B/W
 - Complete-Expanded W/B/W
 - Complete-Missoula County
 - Complete-Owned Separately
 - Complete-Roosevelt County
 - Future
- Other**
- In Progress
 - Backward Controller
 - Montana Border
 - Existing Estimated Mobile Outbound Coverage
 - Phase II Estimated Mobile Outbound Coverage
 - Phase III Estimated Mobile Outbound Coverage

