

Emergency Medical Services (EMS) and Trauma Systems Section

Children, Families, Health and Human
Services Interim Committee

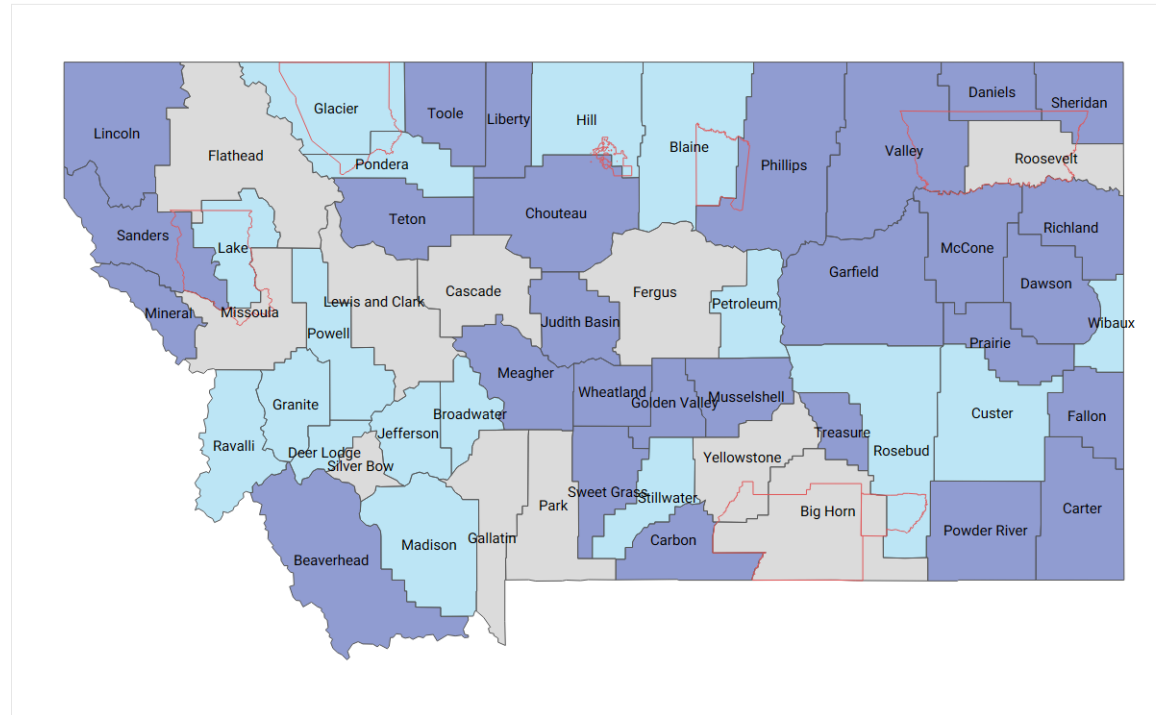
Updates to September 23, 2025 Presentation



DEPARTMENT OF
**PUBLIC HEALTH &
HUMAN SERVICES**

Combined Risk Factors Underserved Areas

Counties with EMS Risk Factors, 2024



Legend

- 0-1 Risk Factors
- 2-3 Risk Factors
- 4 or more Risk Factors



DEPARTMENT OF
PUBLIC HEALTH &
HUMAN SERVICES

Current EMS Capabilities

Agency Type	License Level	Count
Ground Transport (GTA)		156
	Advanced Life Support	31
	Basic w/ALS Authorization	112
	Basic Life Support	13
Non-transport (NTA)		86
	Advanced Life Support	2
	Basic w/ALS Authorization	52
	Basic Life Support	32
Air Medical – Rotor Wing (RWA)		11
	Advanced Life Support	11
Air Medical – Fixed Wing (FWA)		14
	Advanced Life Support	14
All Agencies		267



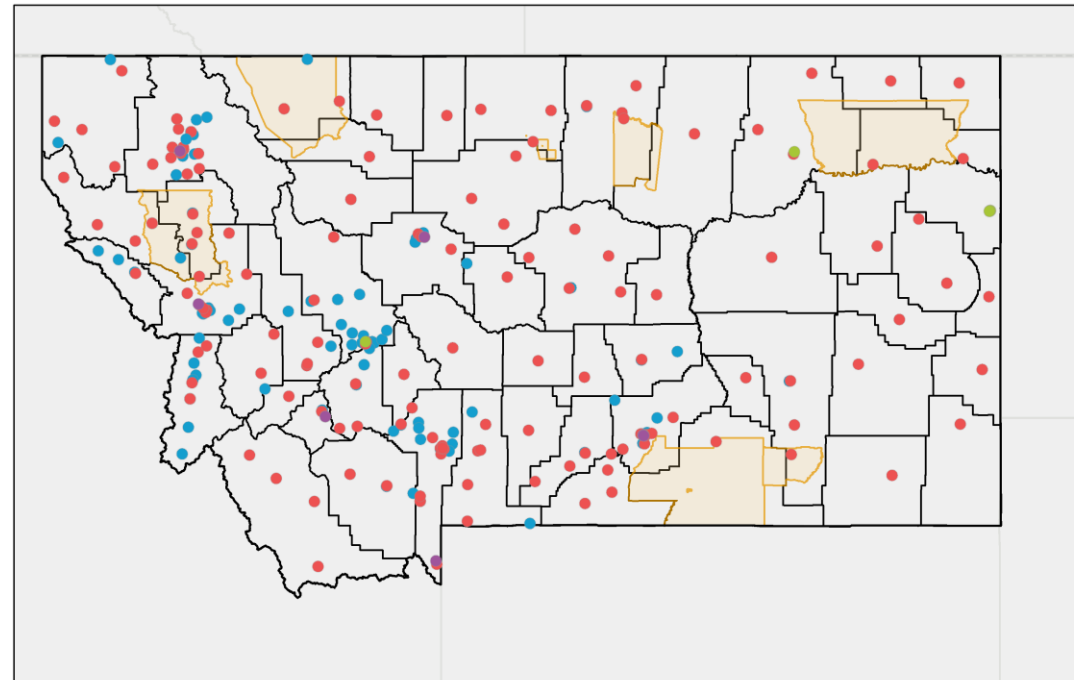
Current EMS Capabilities (cont.)

Agency Type	Organization Type	Paid	Volunteer	All
Ground Transport (GTA)		71	85	156
	Fire Department	18	21	39
	Governmental, Non-Fire	3	24	27
	Hospital	15	8	23
	Private, Non-Hospital	32	32	64
	Tribal	3		3
Non-transport (NTA)		19	67	86
	Fire Department	9	53	62
	Governmental, Non-Fire	3	7	10
	Private, Non-Hospital	7	7	14
Air Medical – Rotor Wing (RWA)		11		11
	Hospital	5		
	Private, Non-Hospital	6		
Air Medical – Fixed Wing (FWA)		14		14
	Hospital	8		
	Private, Non-Hospital	6		
All Agencies		115	152	267



Location of EMS Agencies

Montana EMS Map



8/21/2025

EMS Agencies

- Ground Ambulance Service
- Non-Transporting Unit
- Air Medical Service - Fixed Wing
- Air Medical Service - Rotor Wing

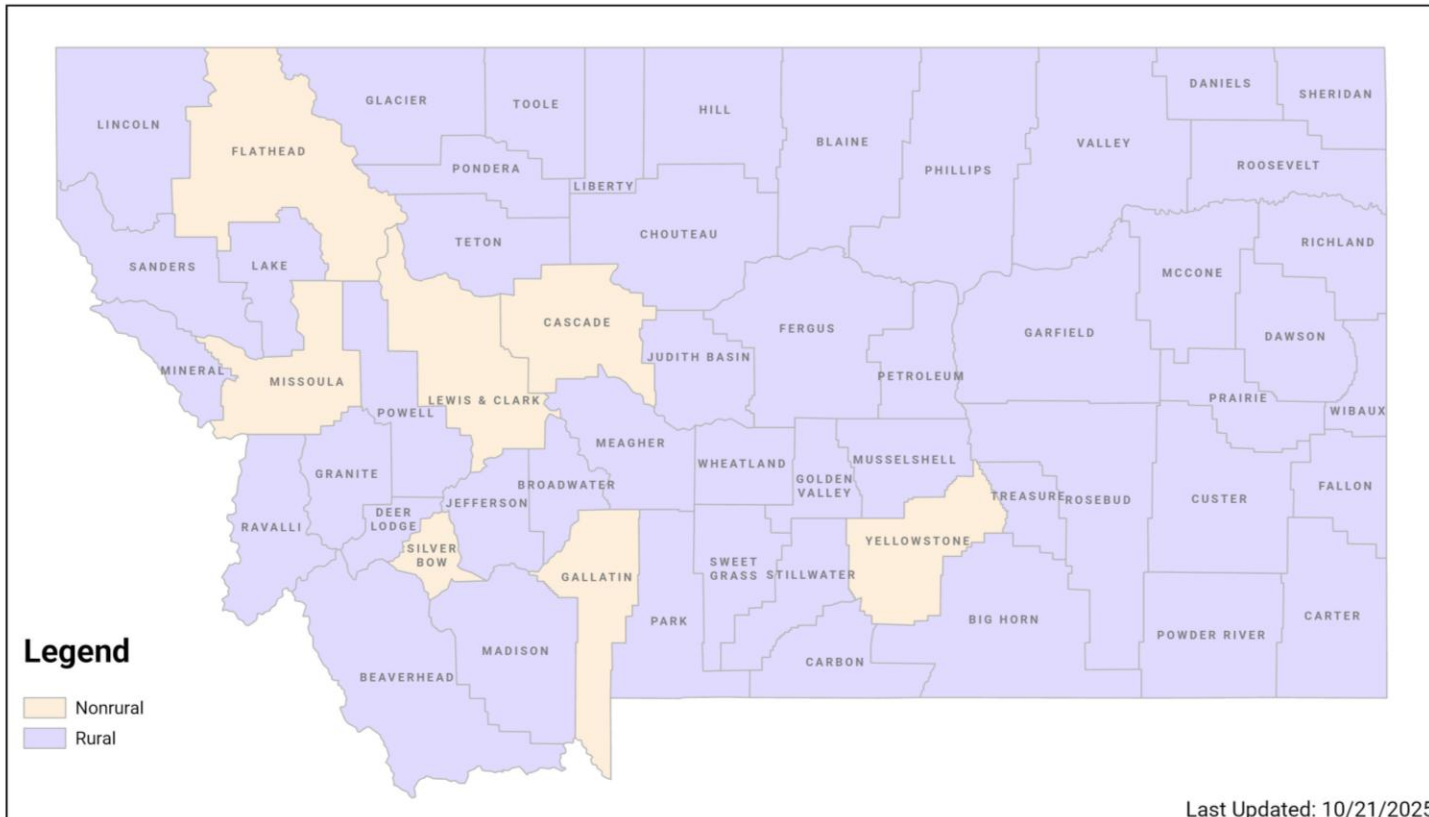
Montana State Library, Sources: Esri, TomTom, Garmin, FAO, NOAA, USGS,
© OpenStreetMap contributors, and the GIS User Community



DEPARTMENT OF
PUBLIC HEALTH &
HUMAN SERVICES

Montana Rural vs Nonrural Counties

Montana Rural/Nonrural Counties



Last Updated: 10/21/2025

Nonrural Counties¹

- Cascade
- Gallatin
- Lewis & Clark
- Missoula
- Yellowstone

- Flathead
- Silver Bow

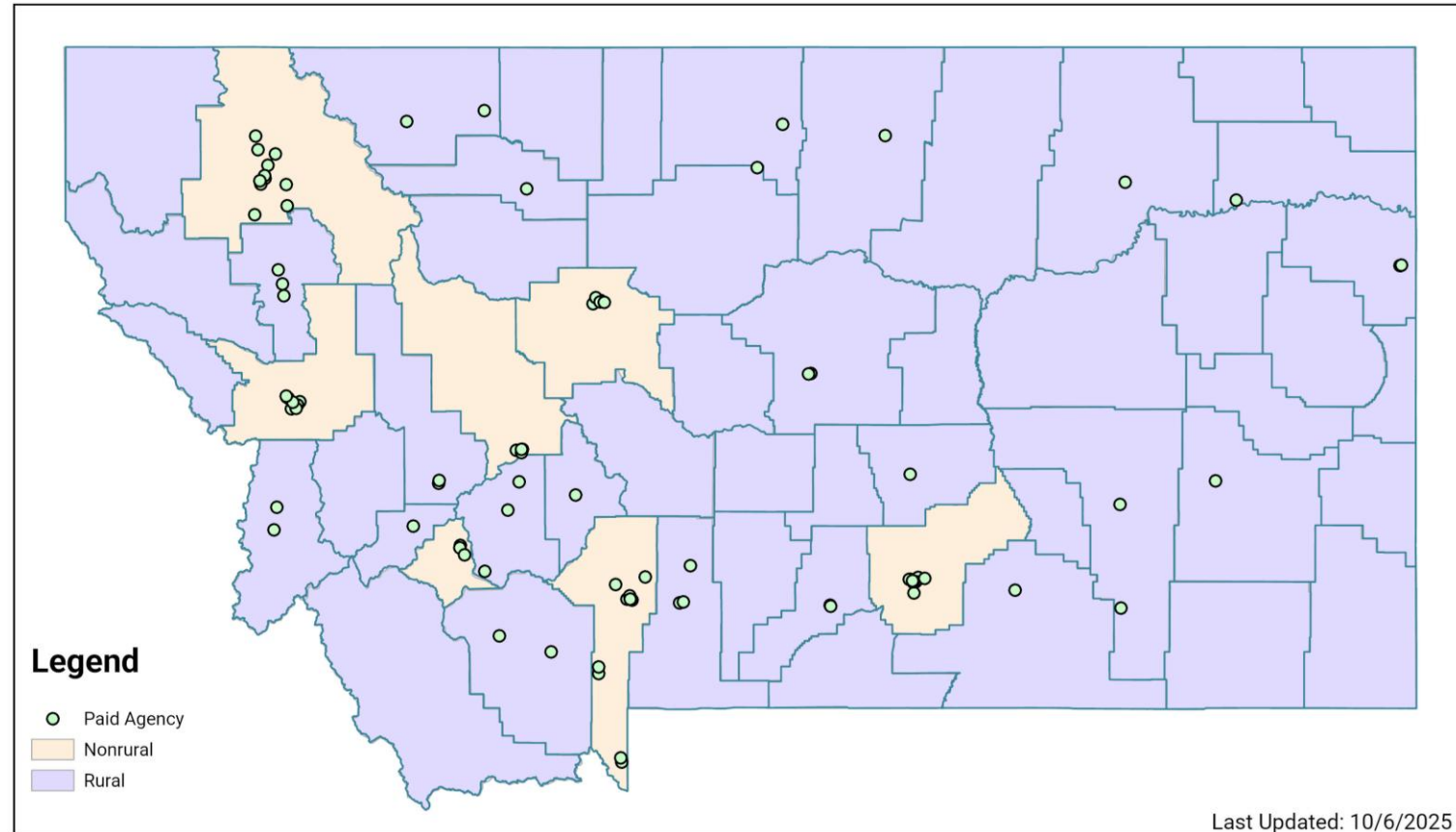
¹ Same 5 counties as Rural Health Transformation Grant plus Flathead & Silverbow Counties (these two counties are classified as Micropolitan by the National Center for Health Statistics & are not considered rural for EMS analysis purposes).



DEPARTMENT OF
**PUBLIC HEALTH &
HUMAN SERVICES**

Location of Paid EMS Agencies by Rural vs Nonrural

Montana Rural/Nonrural Counties with Paid EMS Agency Locations



Last Updated: 10/6/2025

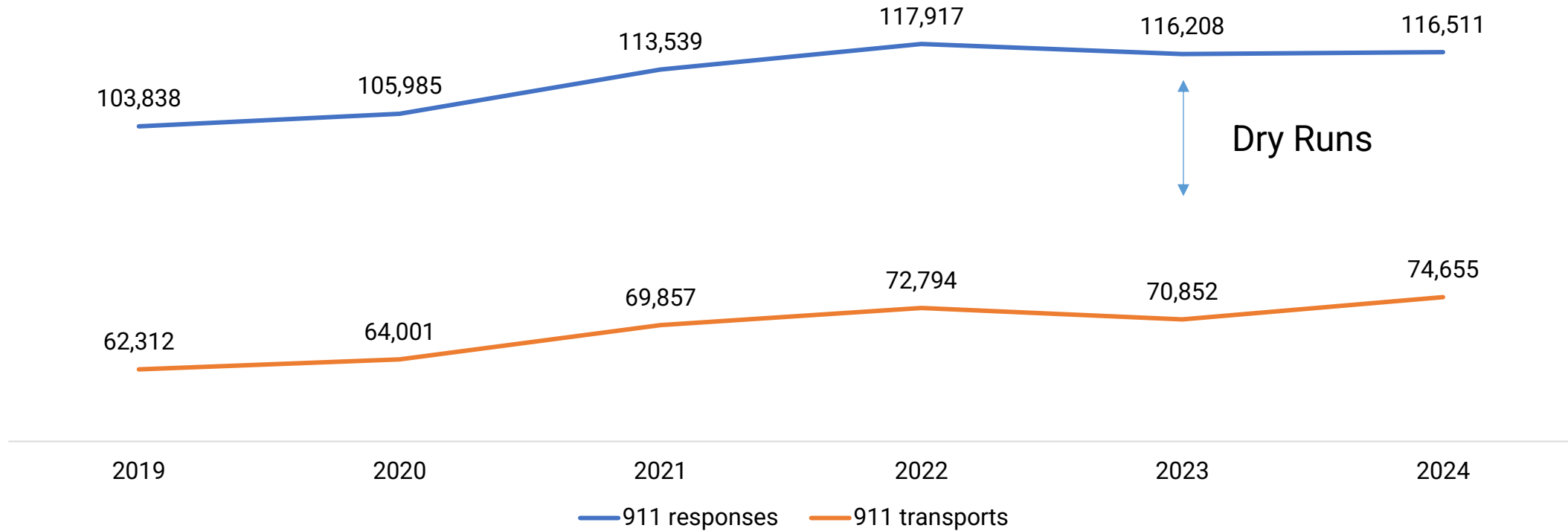


DEPARTMENT OF
PUBLIC HEALTH &
HUMAN SERVICES

Current EMS Capabilities

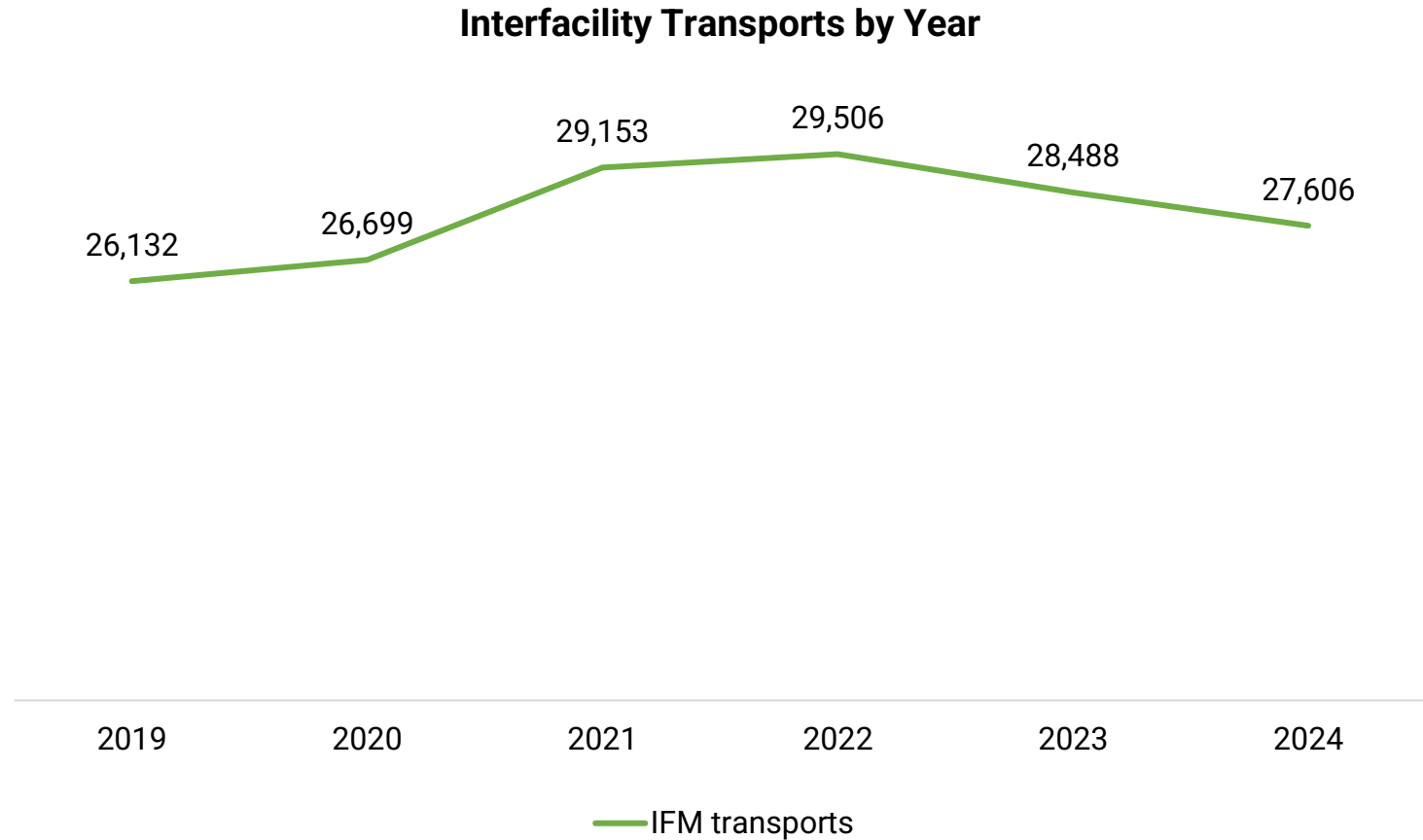
911 Response

911 Activations & 911 Transports by Year



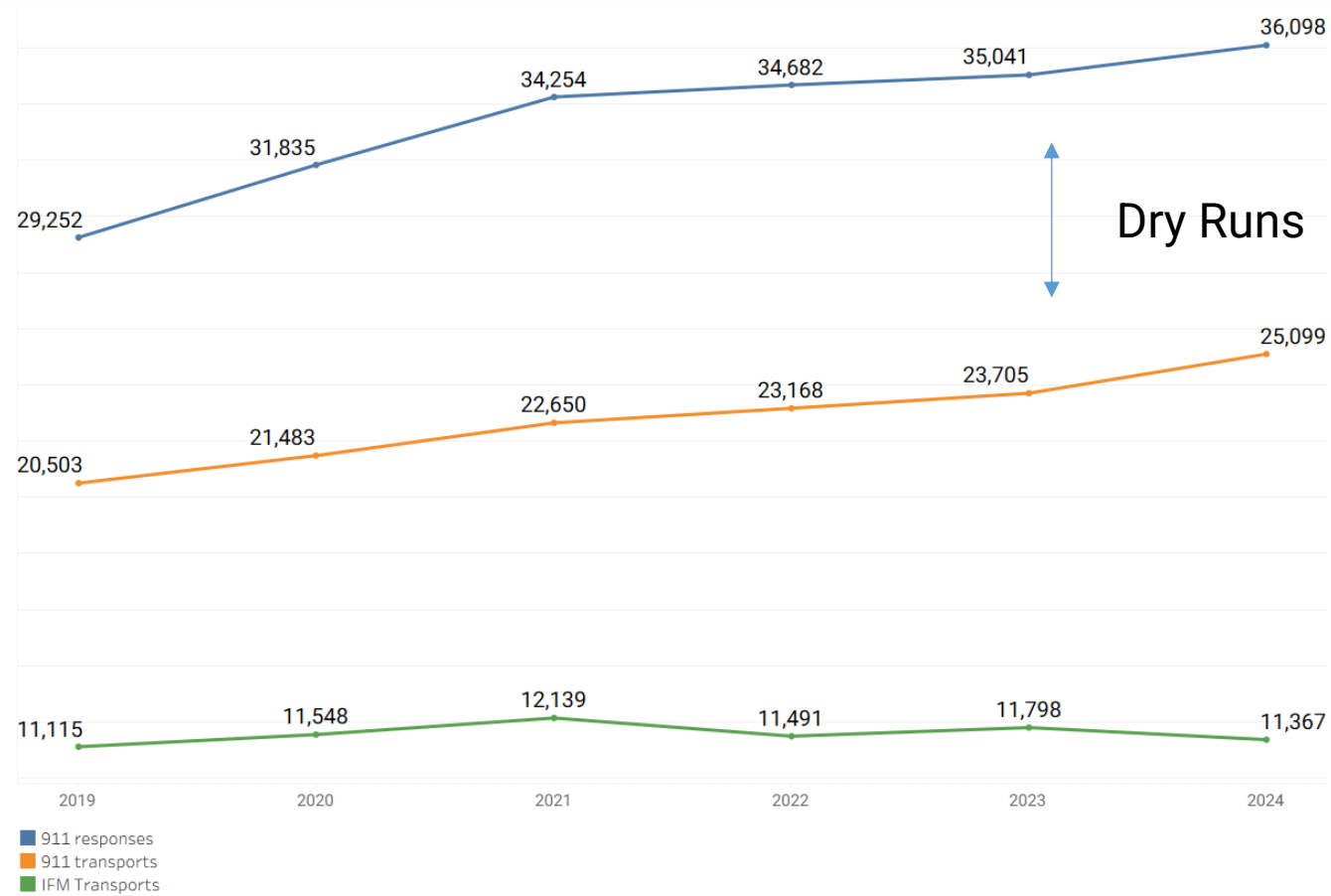
Current EMS Capabilities

Inter-Facility Transports



Current EMS Capabilities

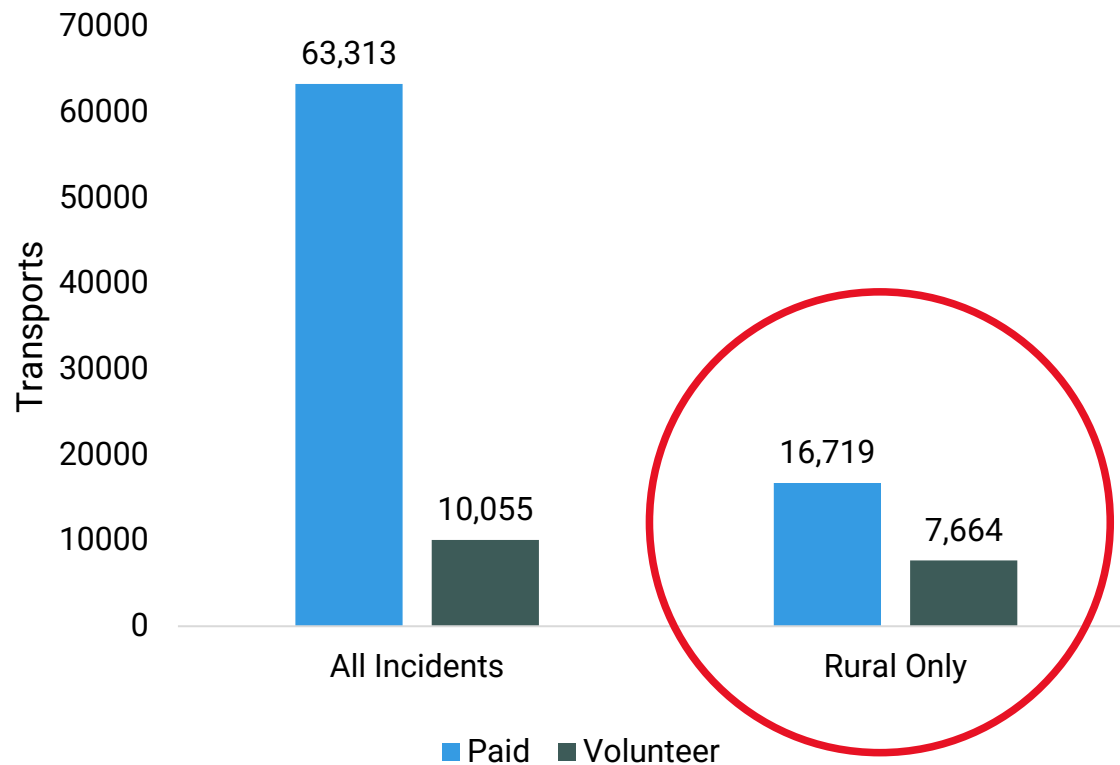
Rural



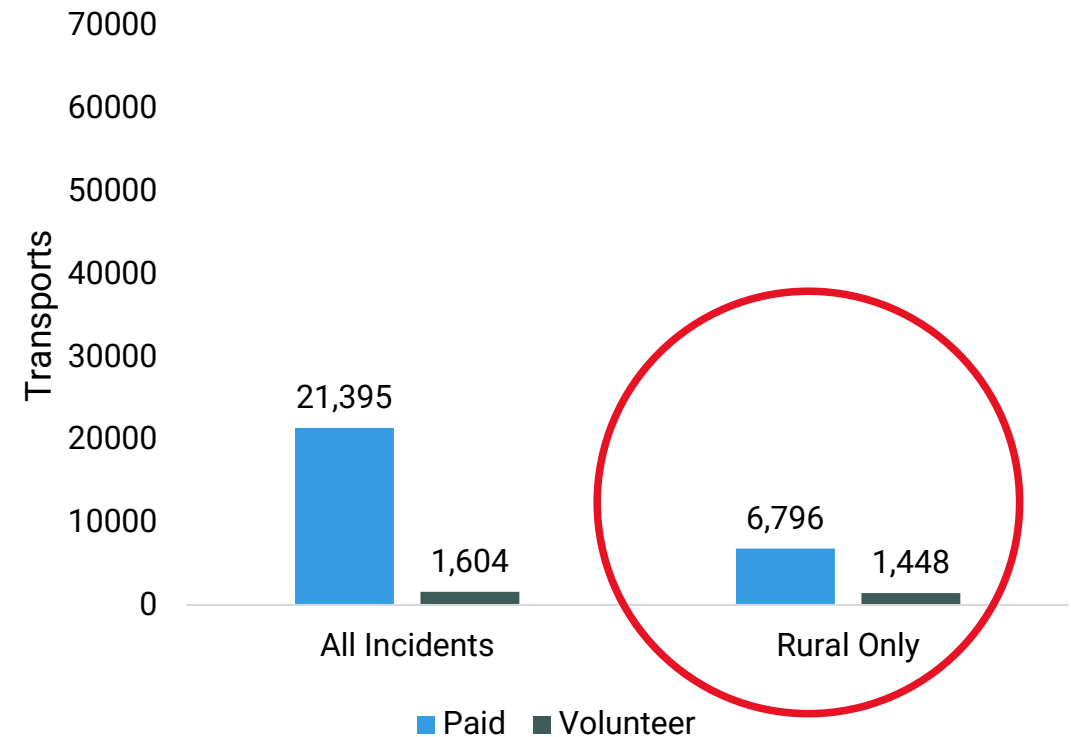
Current EMS Capabilities

2024 Transports by Paid/Volunteer

911 Ground Transports (2024)



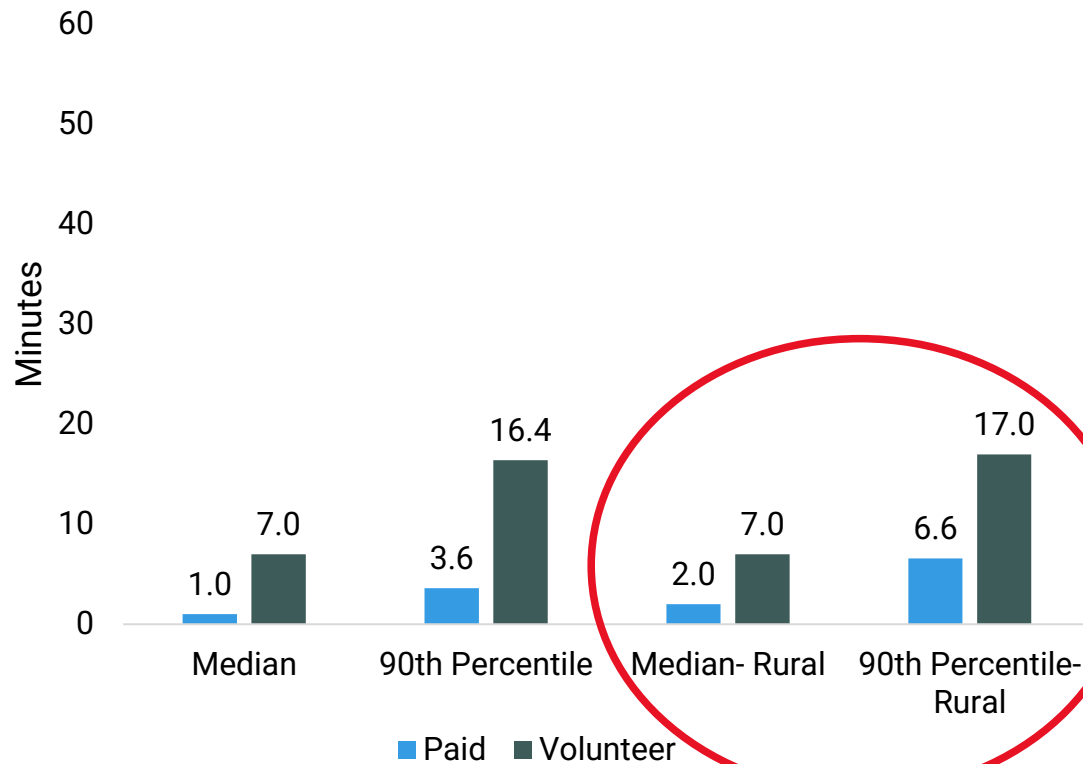
Interfacility Ground Transports (2024)



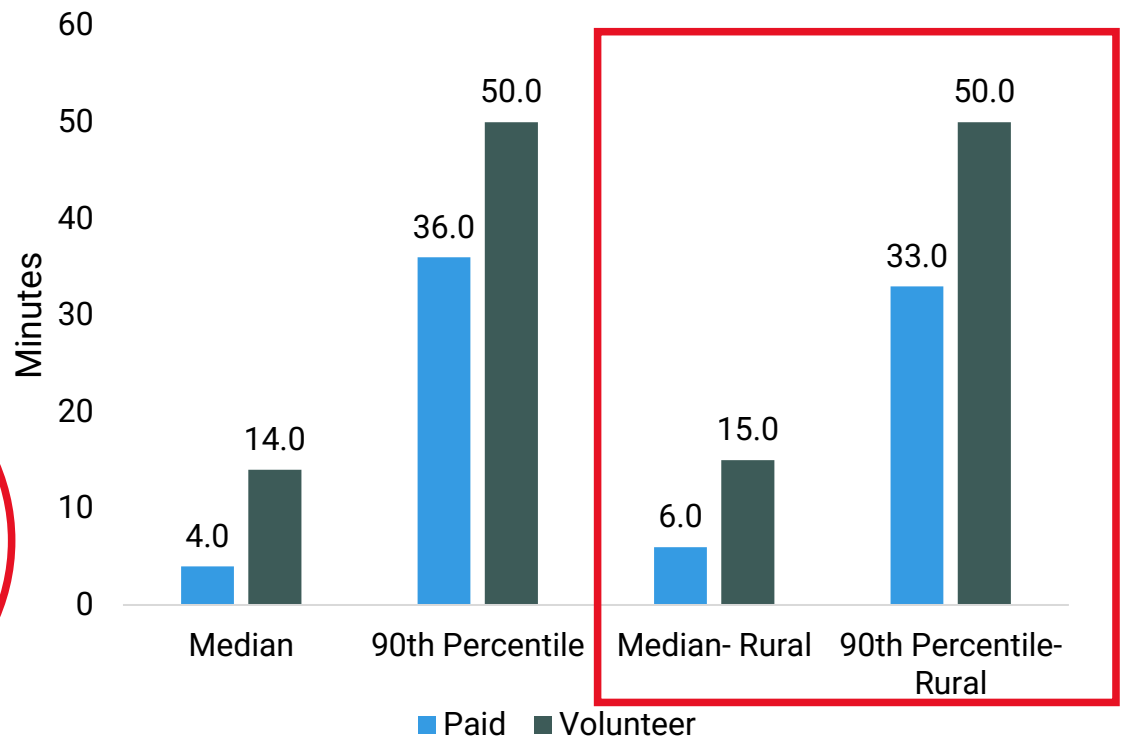
Current EMS Capabilities

Chute Time

911 Ground Amb. (2024)

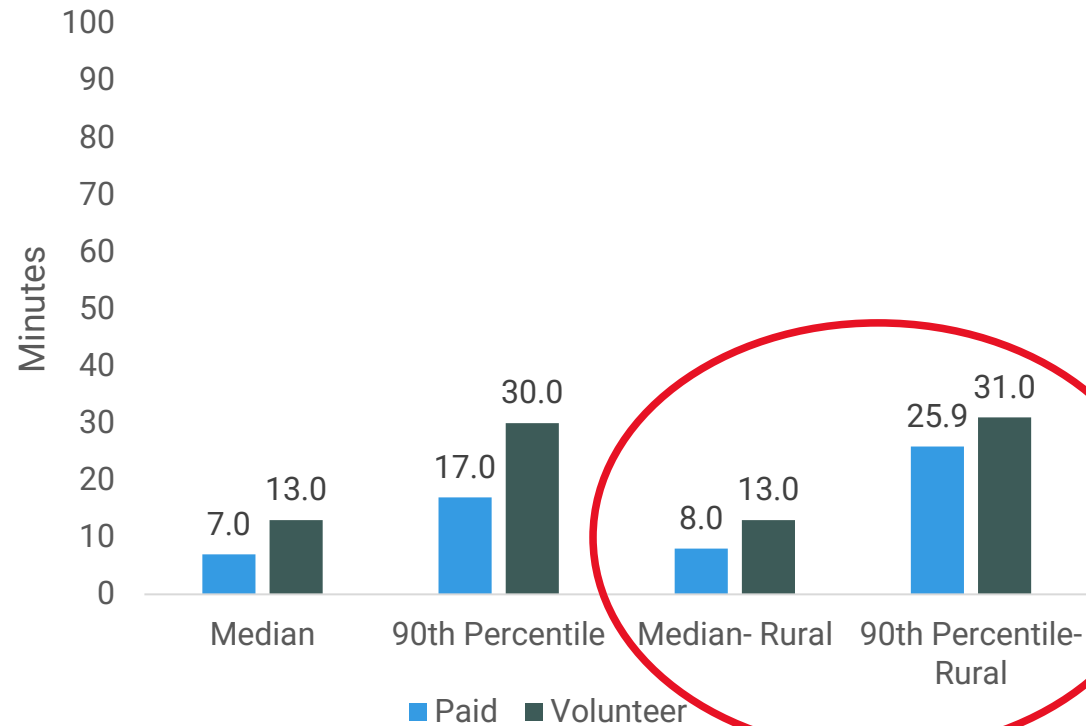


Interfacility Ground Amb. (2024)

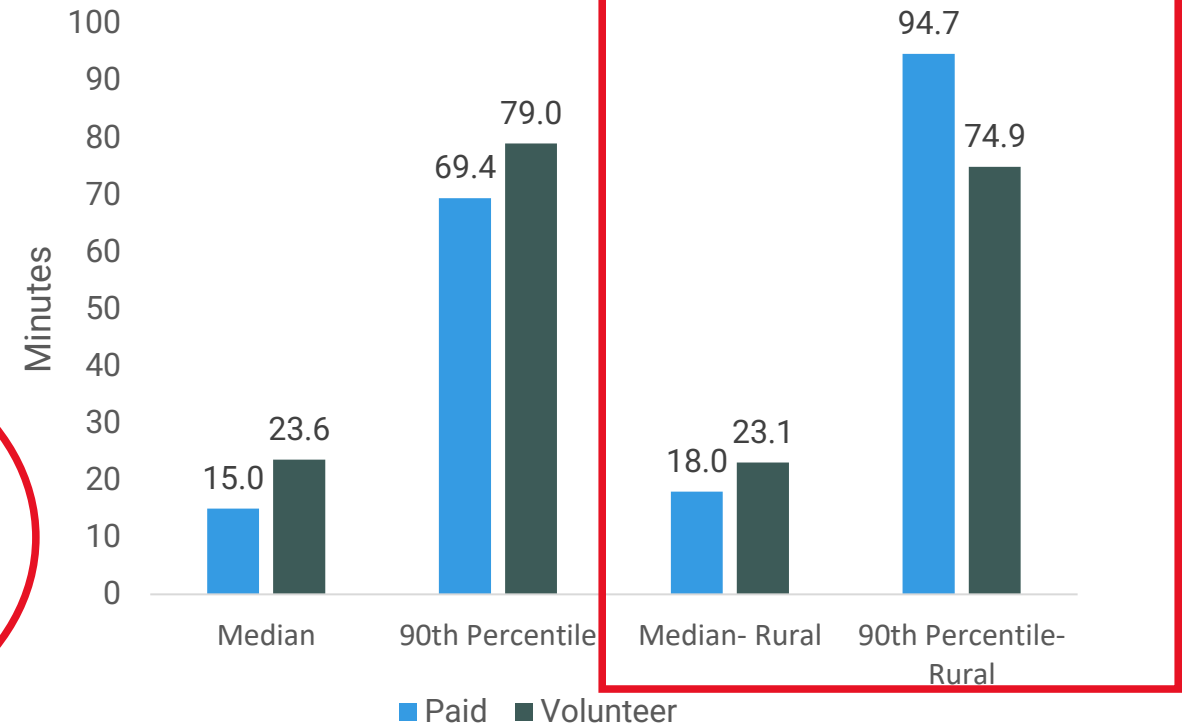


Current EMS Capabilities Response Time

911 Ground Amb. (2024)

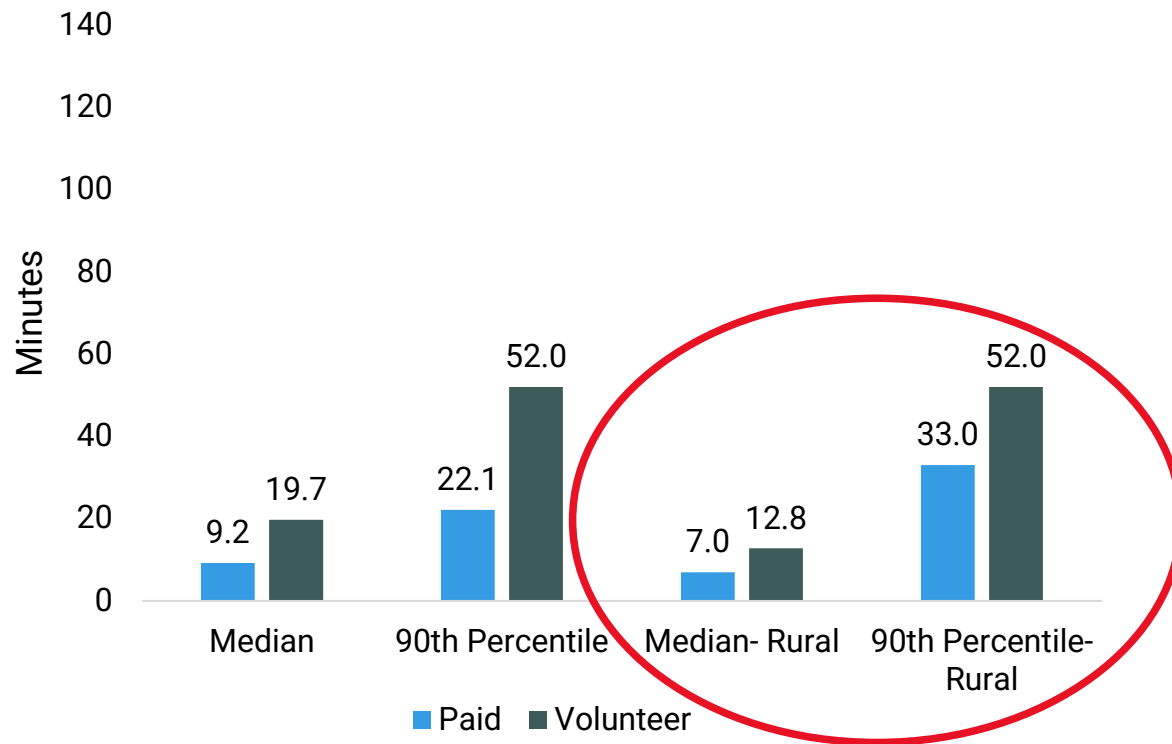


Interfacility Ground Amb. (2024)

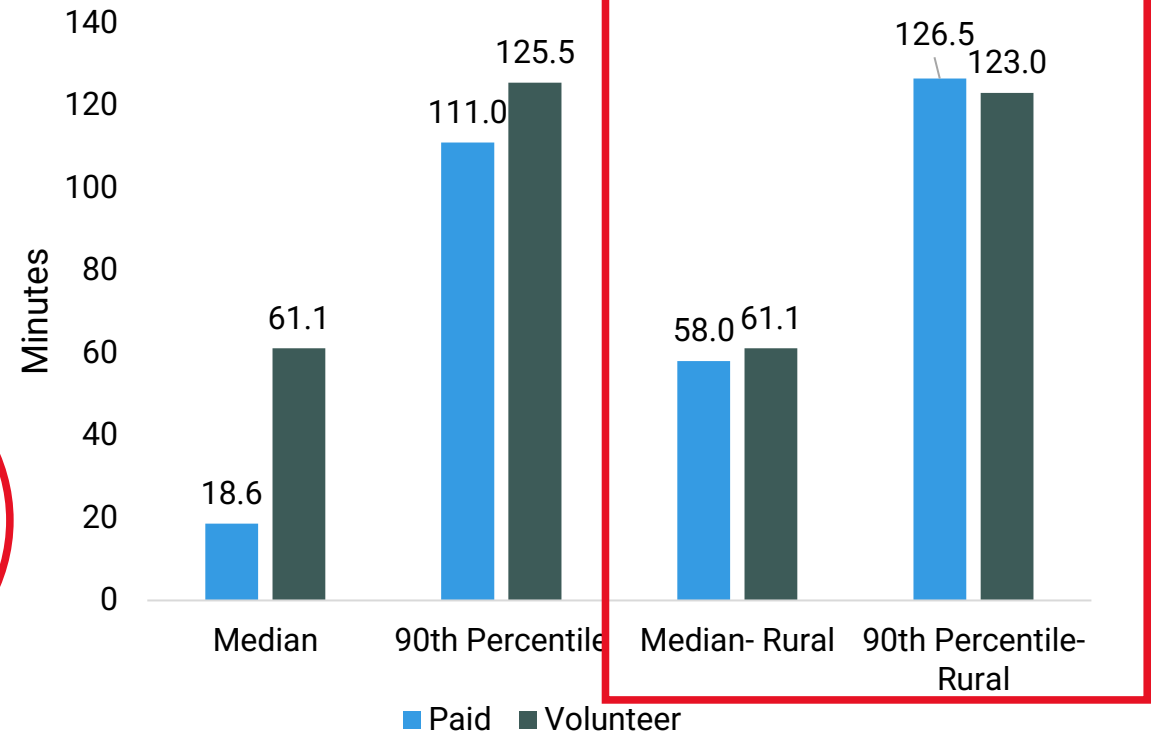


Current EMS Capabilities Transport Time

911 Ground Amb. (2024)



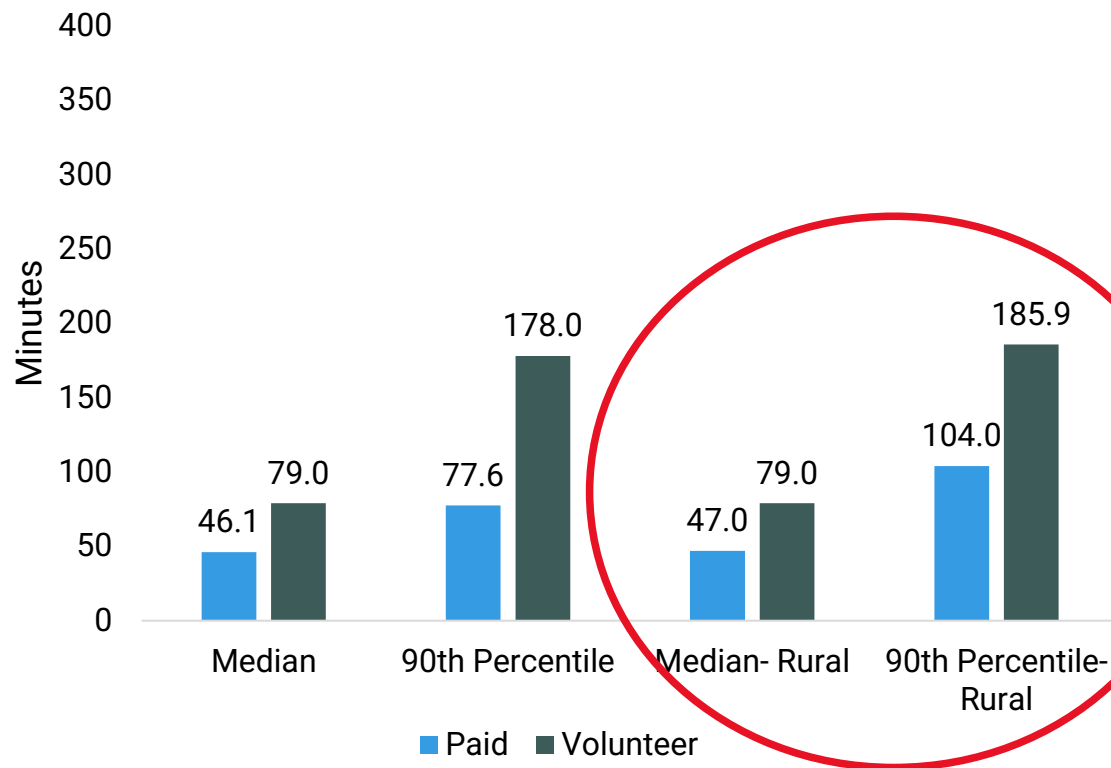
Interfacility Ground Amb. (2024)



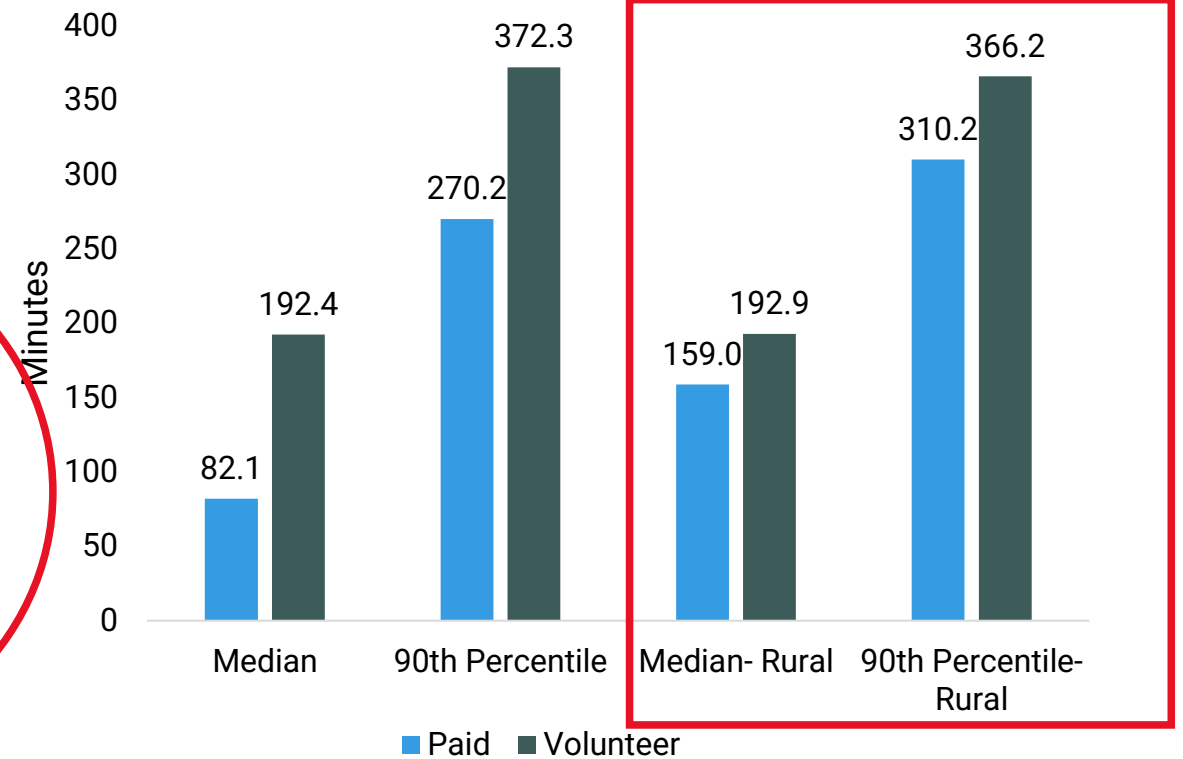
Current EMS Capabilities

Total Call Time

911 Ground Amb. (2024)

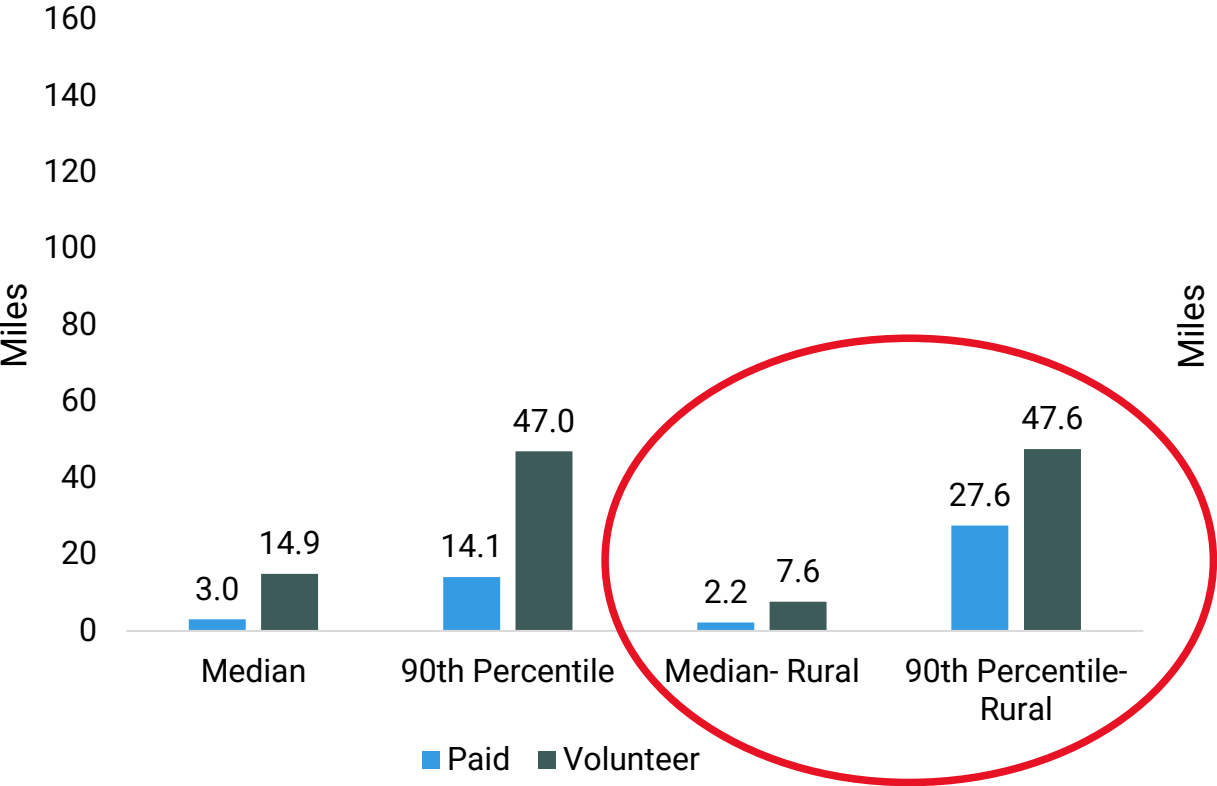


Interfacility Ground Amb. (2024)

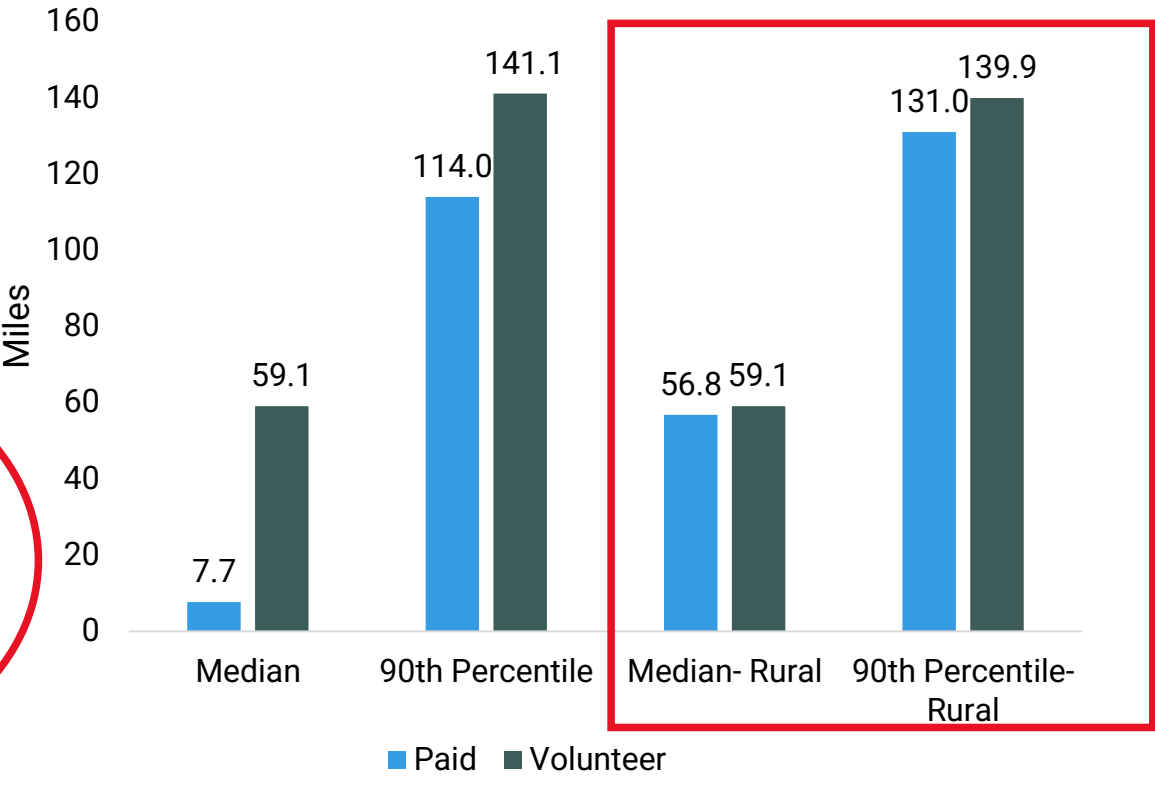


Current EMS Capabilities Loaded Distance

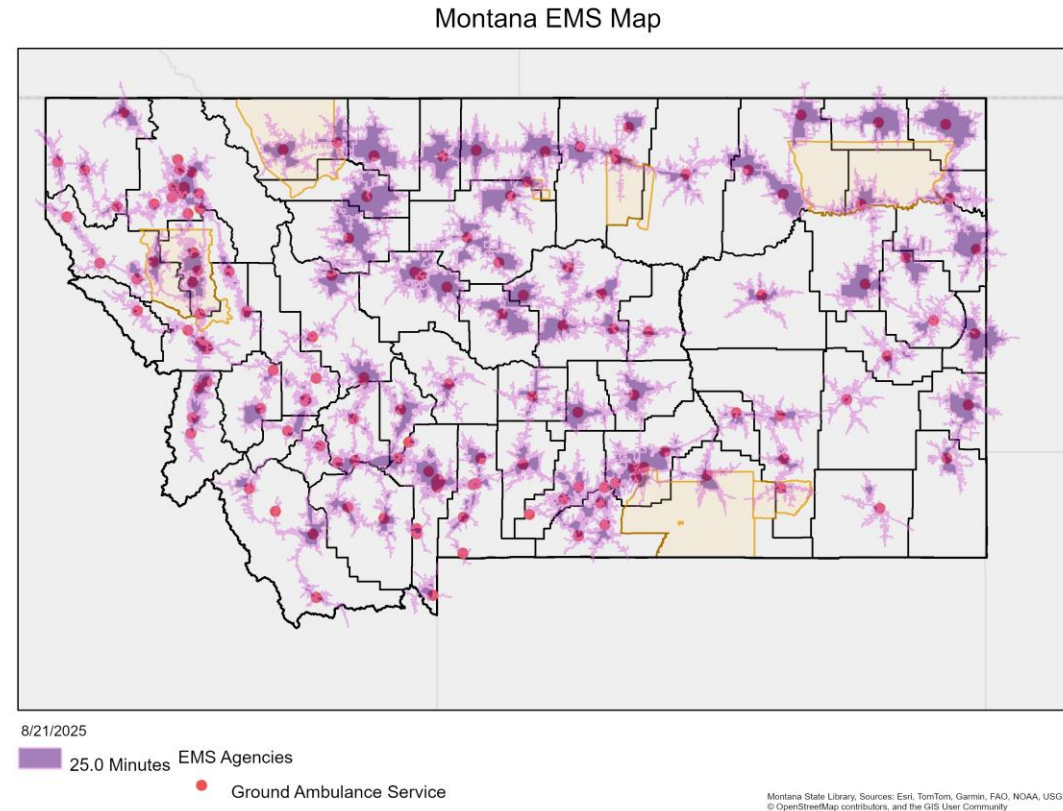
911 Ground Amb. (2024)



Interfacility Ground Amb. (2024)



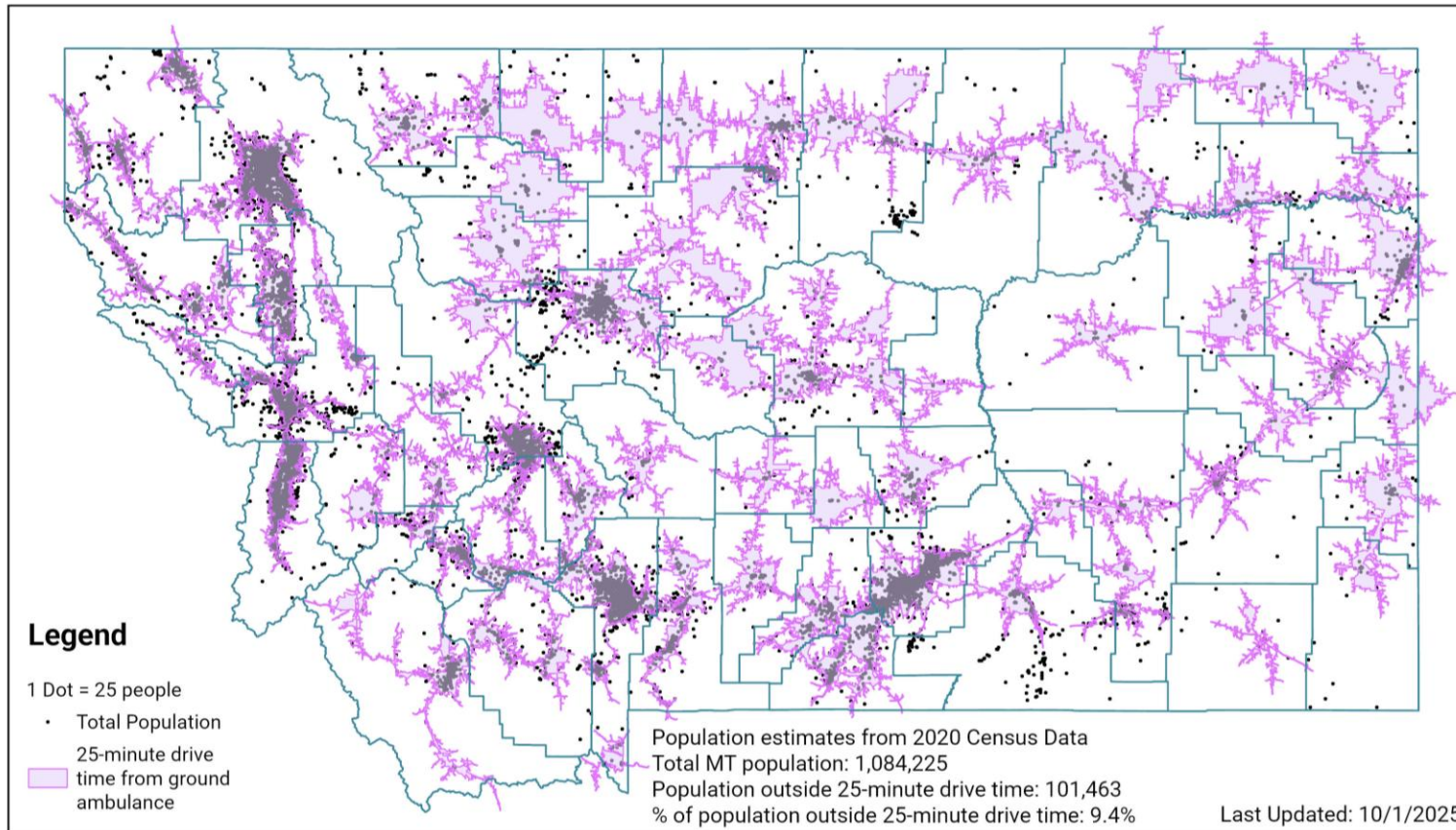
25-Minute Drive Times – Ground Ambulance



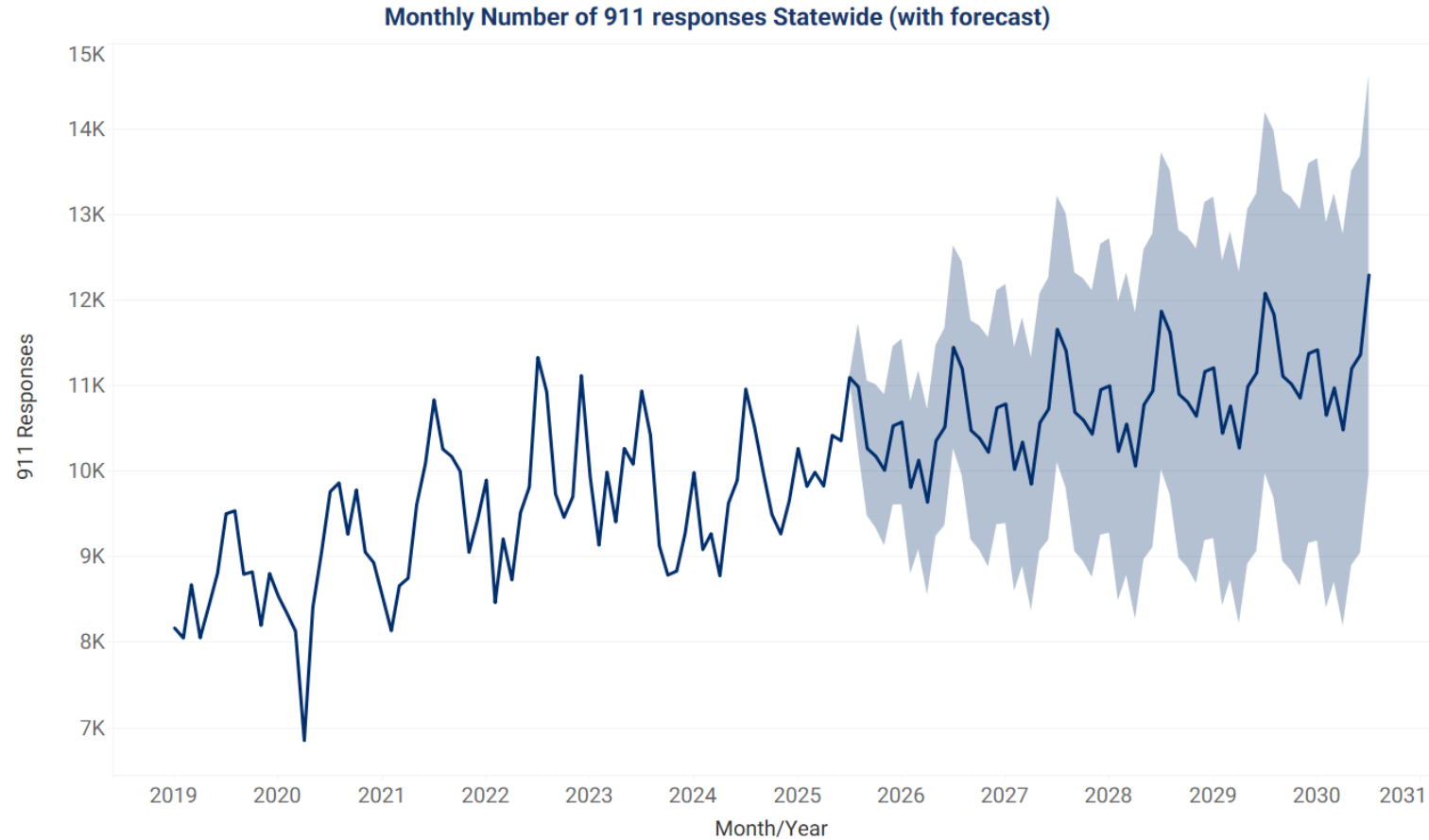
25-Minute Drive Times – Ground Ambulance

White Areas = Ambulance Desert

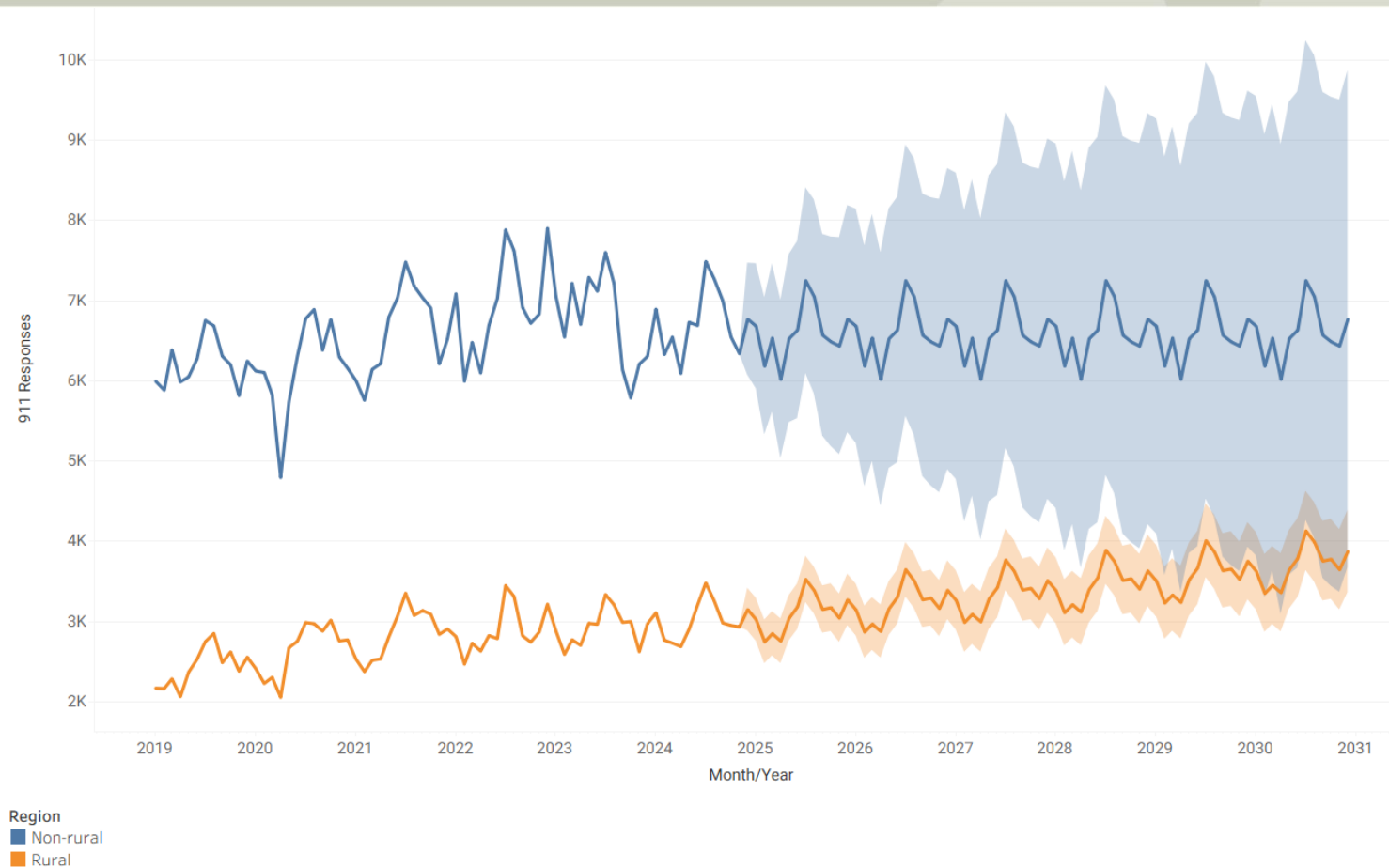
Montana Population with Ground Ambulance 25-Minute Drive Time Overlay



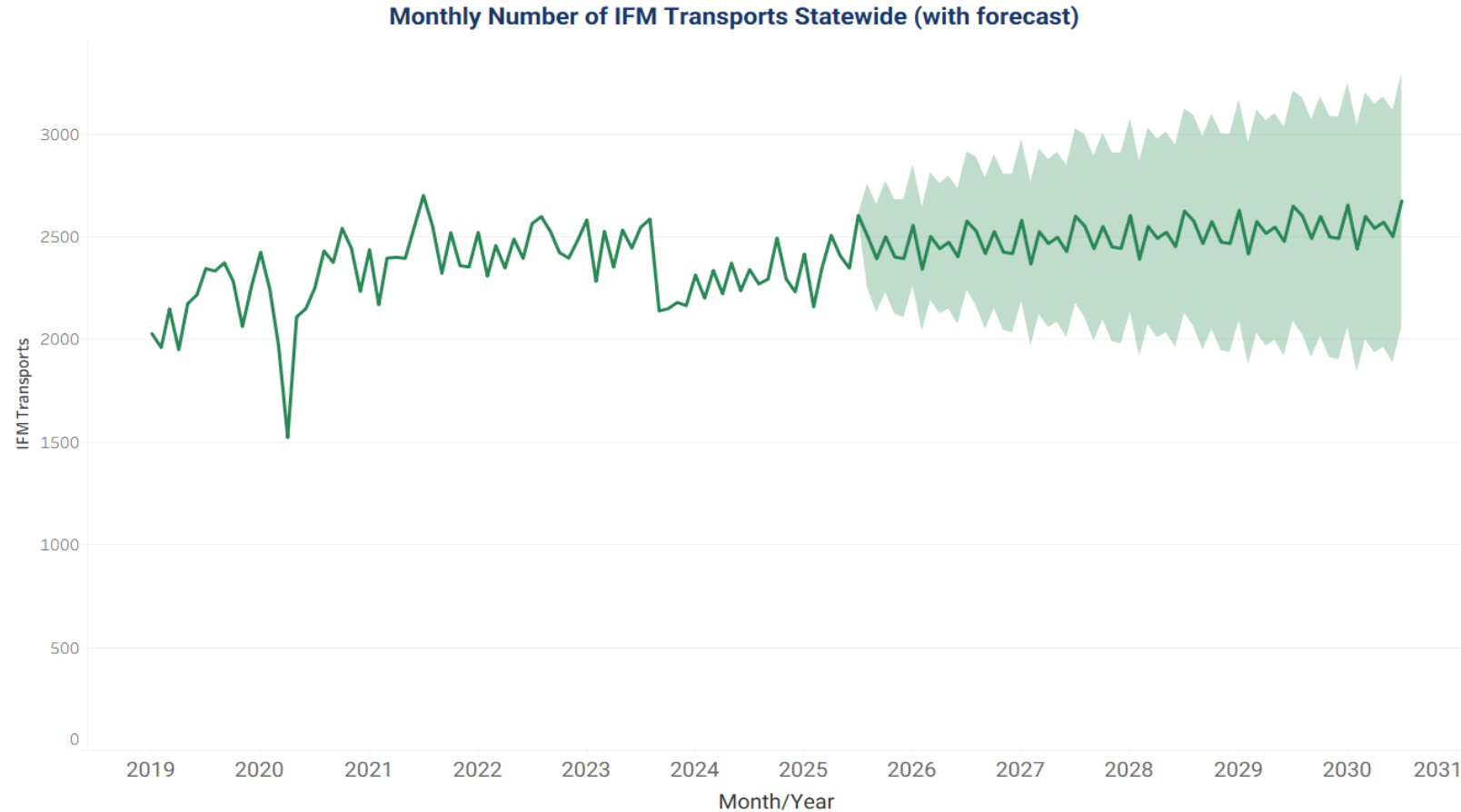
Estimates of Future Demand 911 Response



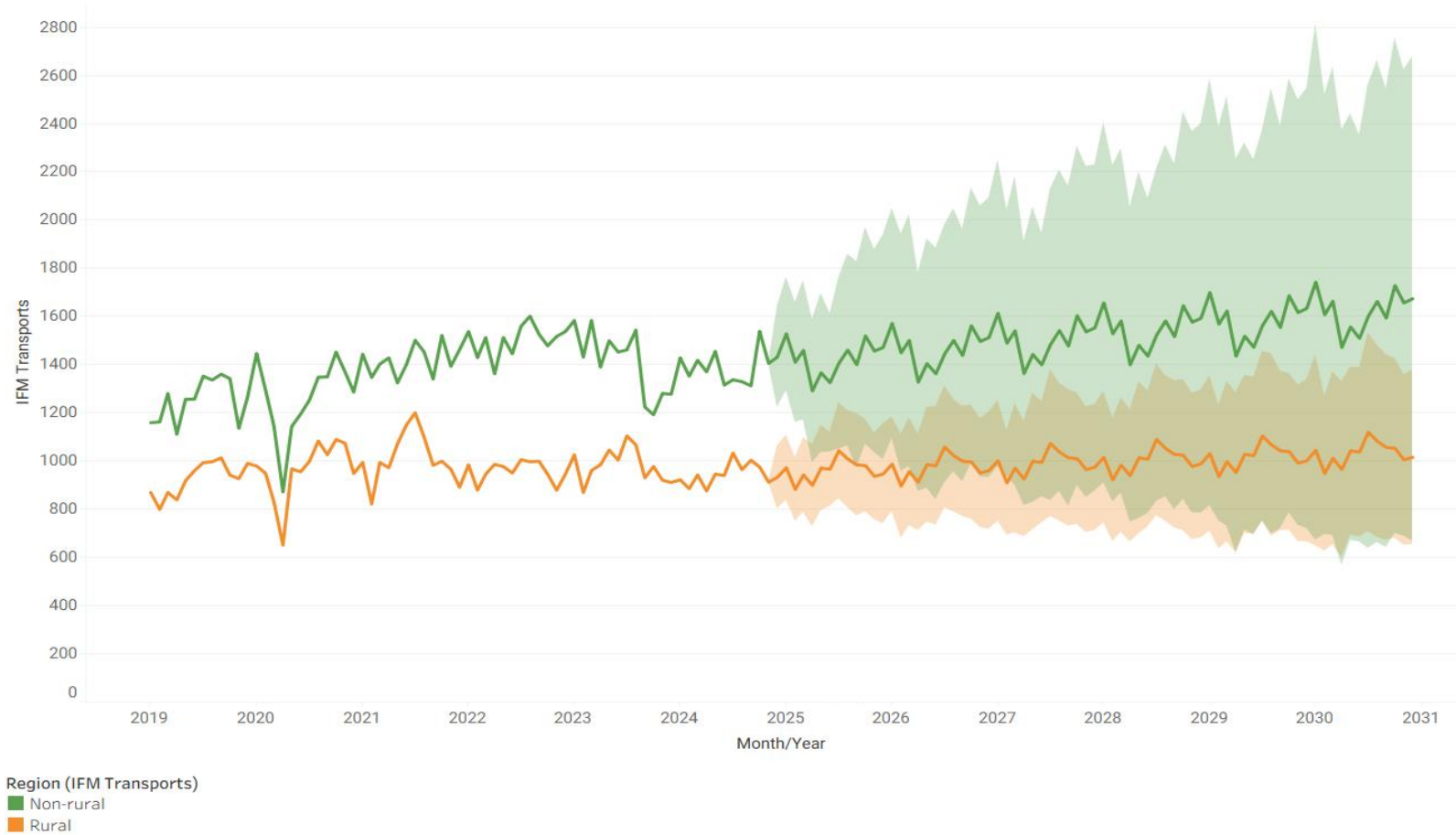
Estimates of Future Demand 911 Response- Rural vs Nonrural



Estimates of Future Demand Interfacility Transport

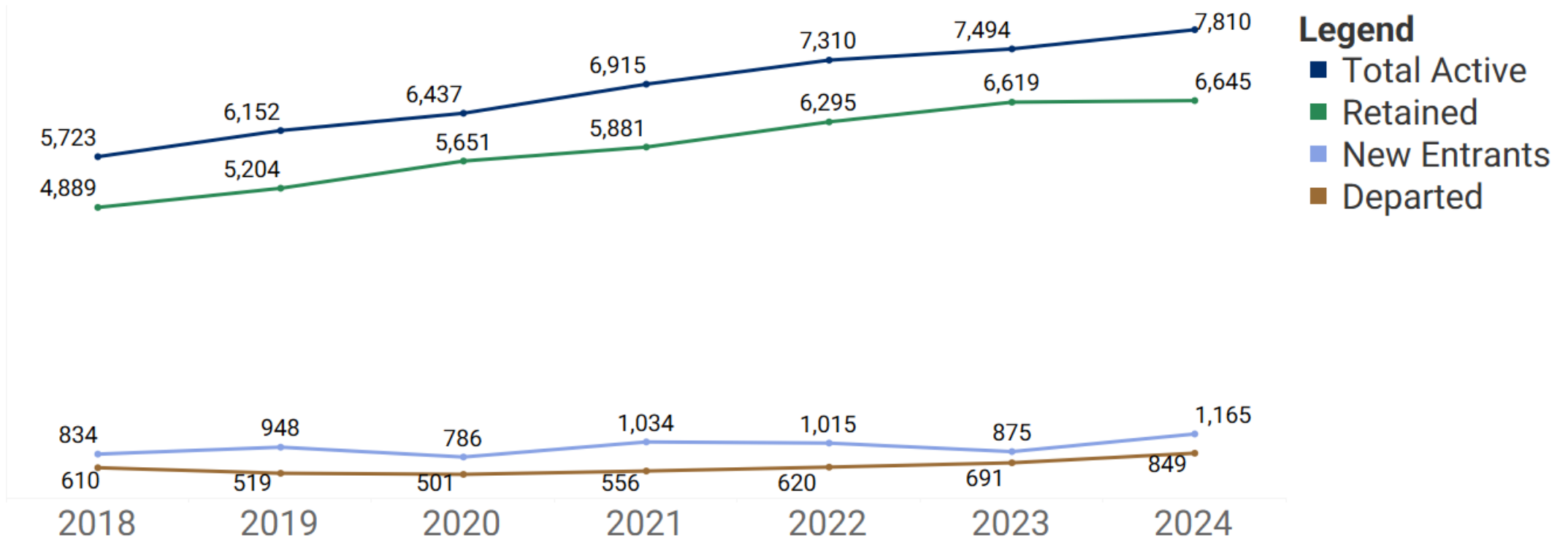


Estimates of Future Demand Interfacility Transport – Rural vs Nonrural



Workforce

Number of licensed emergency care providers (ECPs)



Workforce (cont.)

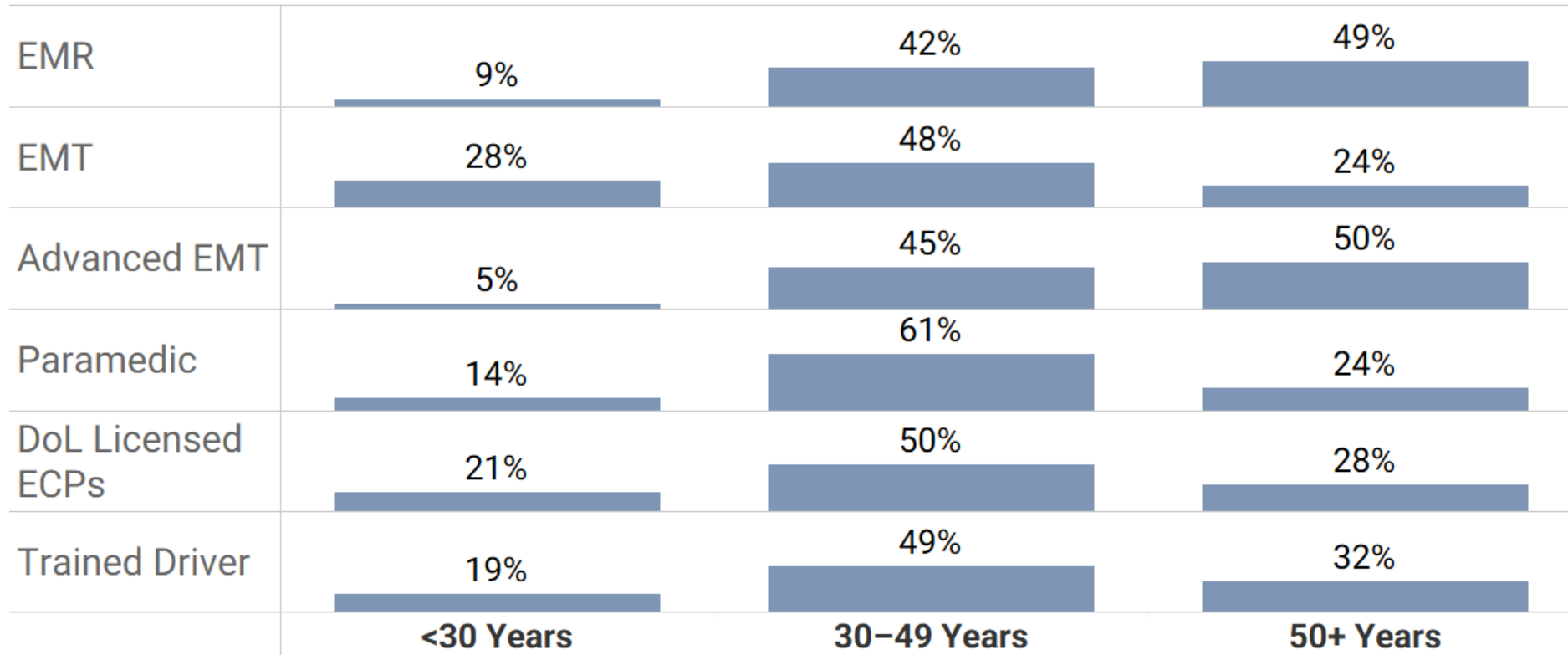
Licensed vs. rostered emergency care providers (ECPs), 2025

License Type	Active License	Rostered	Percent Rostered
EMR	260	138	53.1%
EMT	4,580	2,194	47.9%
Advanced EMT	640	472	73.8%
Paramedic	1,728	866	50.1%
Grand Total	7,208	3,670	47.9%



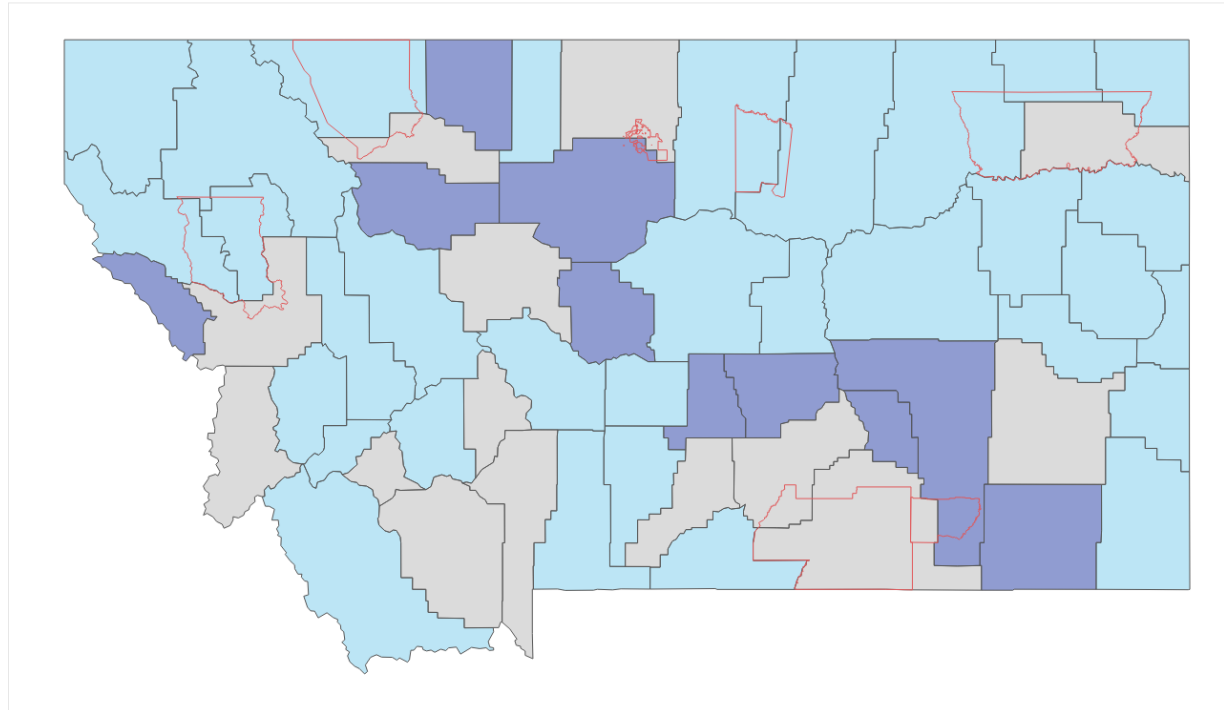
Workforce (cont.)

Age distribution of rostered emergency care providers (ECPs), 2025



Risk Factor: Aging Workforce

Percent of rostered emergency care providers (ECPs) aged 50 or older, 2025



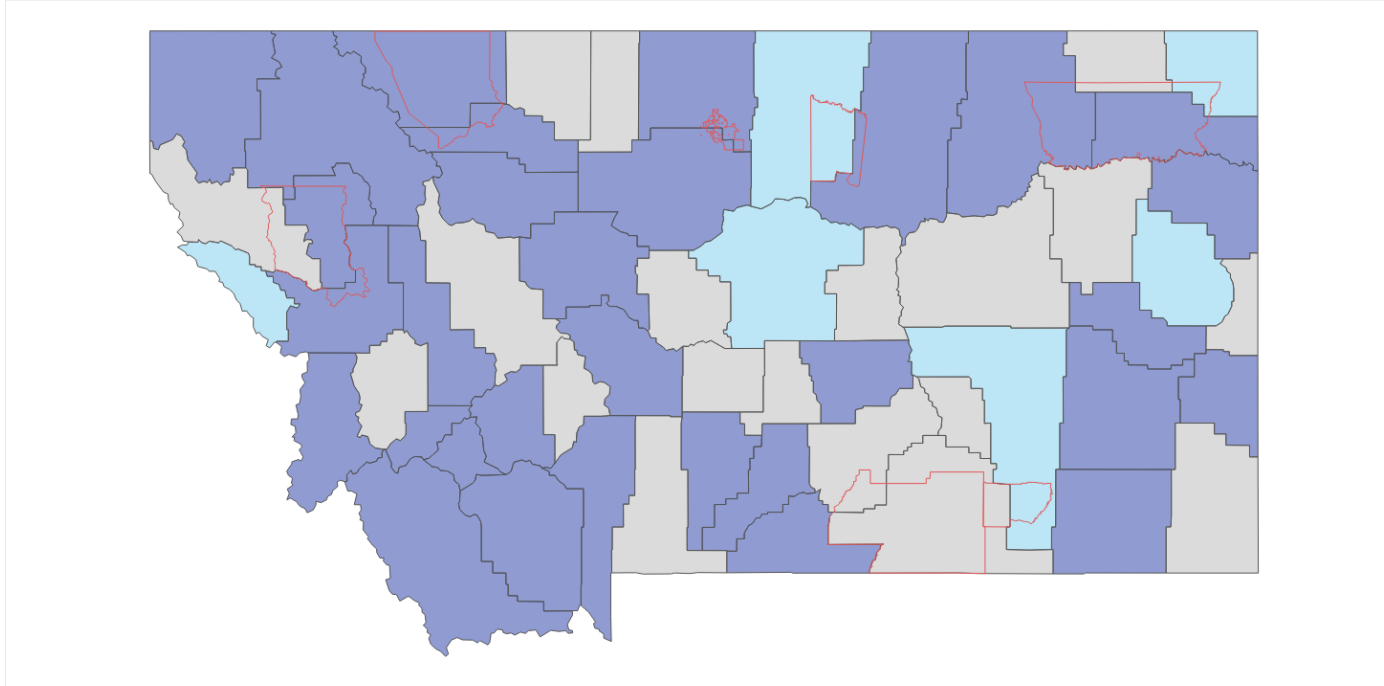
Legend

- 0%-24%
- 25% to 49%
- 50% or greater



Risk Factor: 911 Response Volume Increase

Percent change in count of 911 responses predicted from 7/2024 to 7/2030



Legend

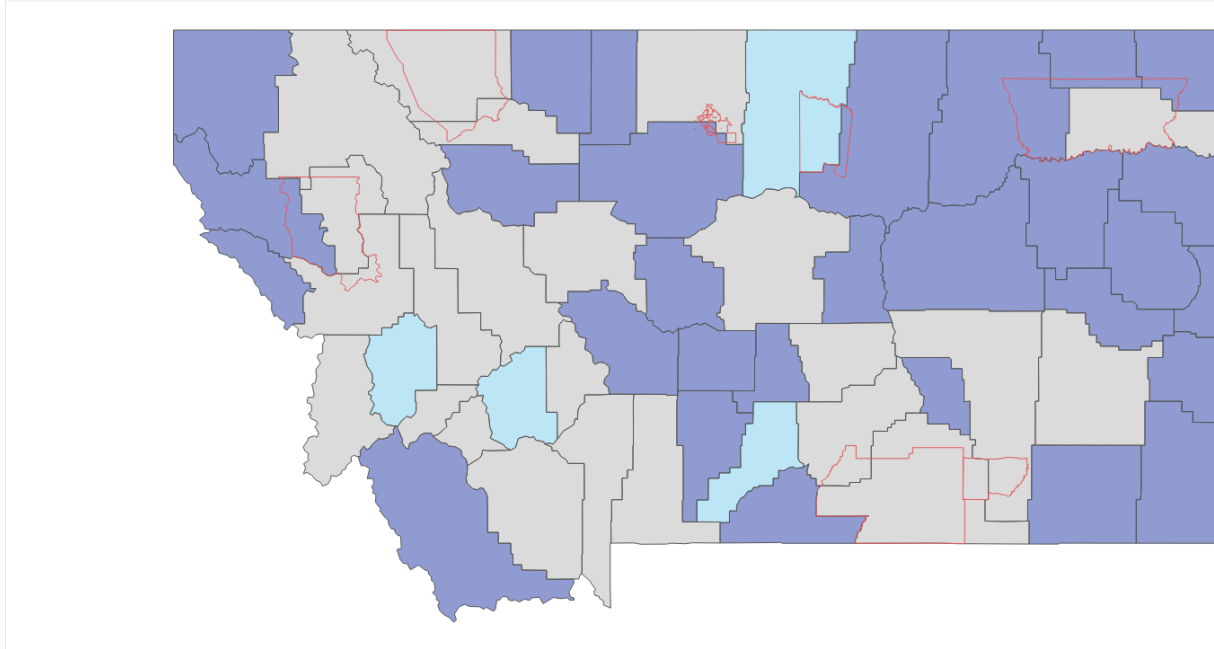
- No change, or decrease
- >0% to 9% increase
- 10% or greater increase



DEPARTMENT OF
PUBLIC HEALTH &
HUMAN SERVICES

Risk Factor: High Percent of Transports by Volunteer Agencies

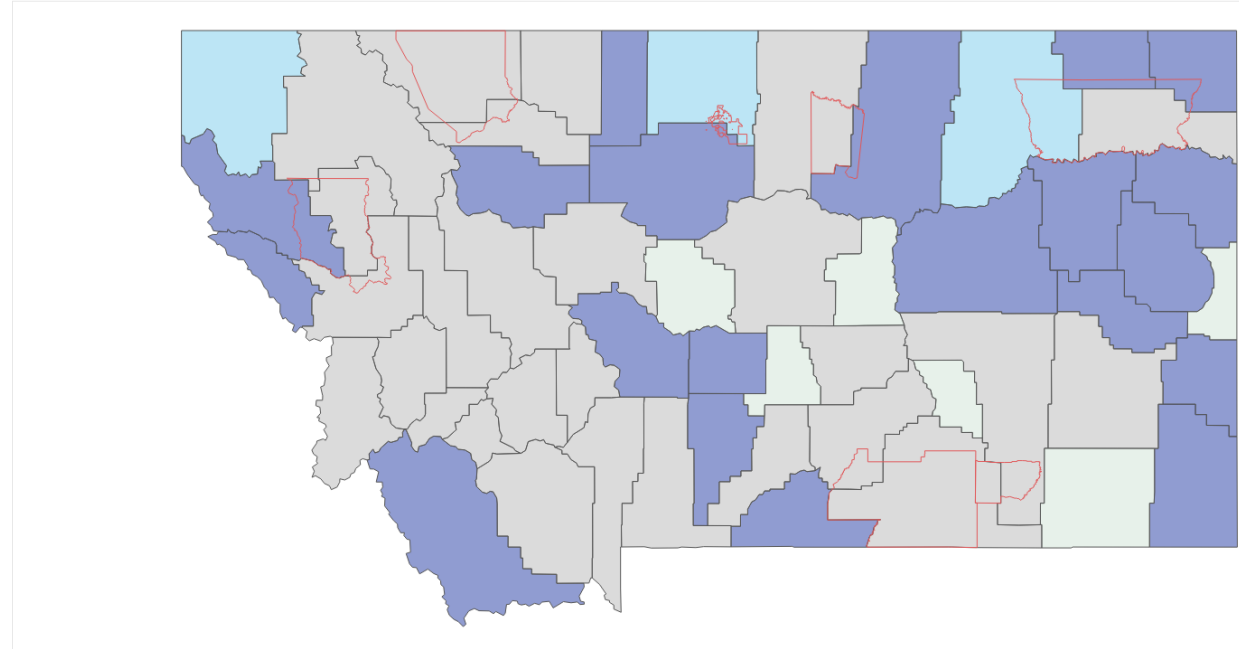
Percent of ground ambulance 911 transports done by volunteer agencies, 2024



Legend

- 0%-9%
- 10% to 49%
- 50% or greater

Percent of ground ambulance IFM transports done by volunteer agencies, 2024



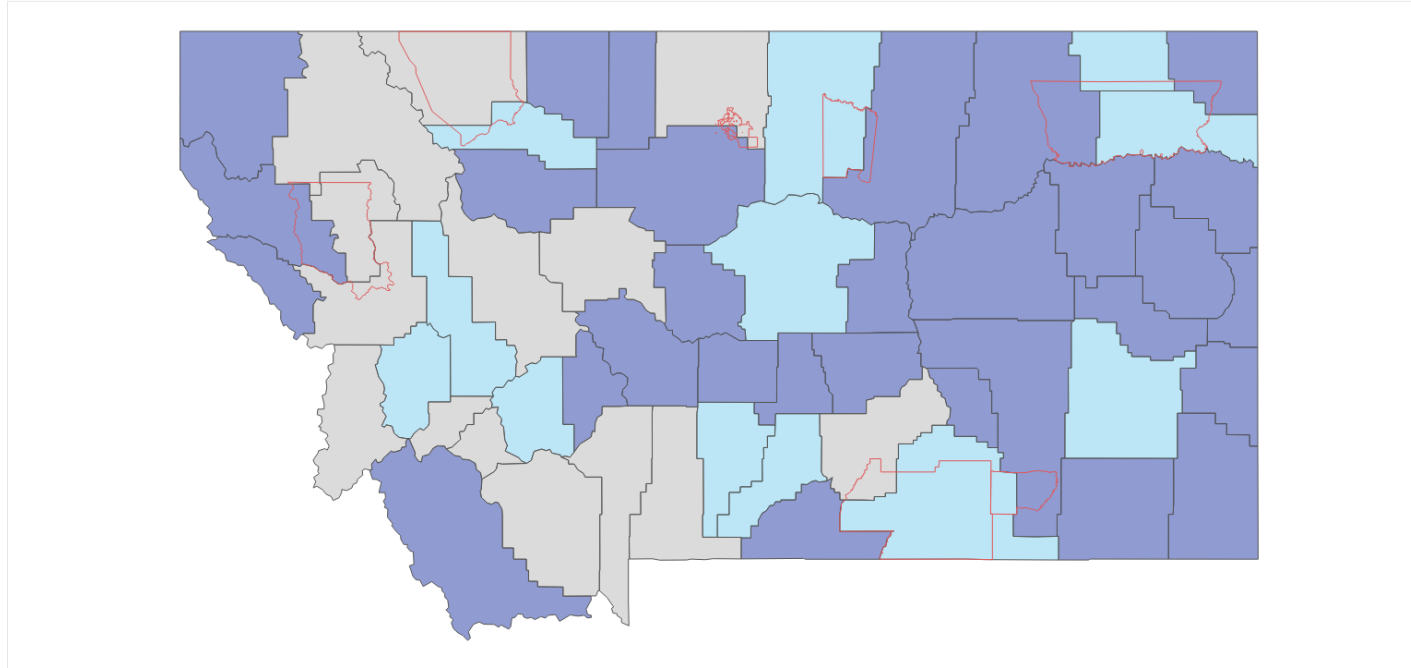
Legend

- No data
- 0%-9%
- 10% to 49%
- 50% or greater



Risk Factor: Long 911 Chute Times

Median chute time, ground ambulance 911 transports, 2024



Legend

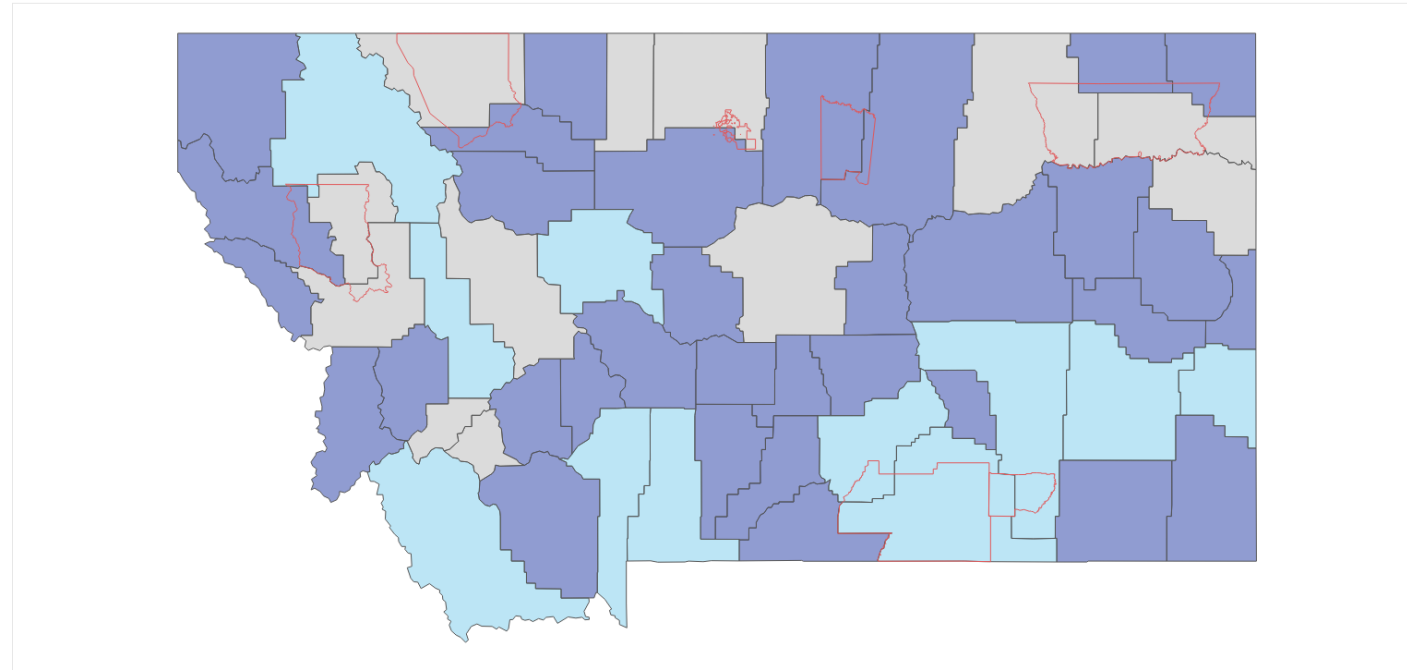
- 00:00:00 - 00:01:59
- 00:02:00 - 00:04:59
- 00:05:00 or greater



Risk Factor

Long 911 Total Call Times

Median total call time, ground ambulance 911 transports, 2024



Legend

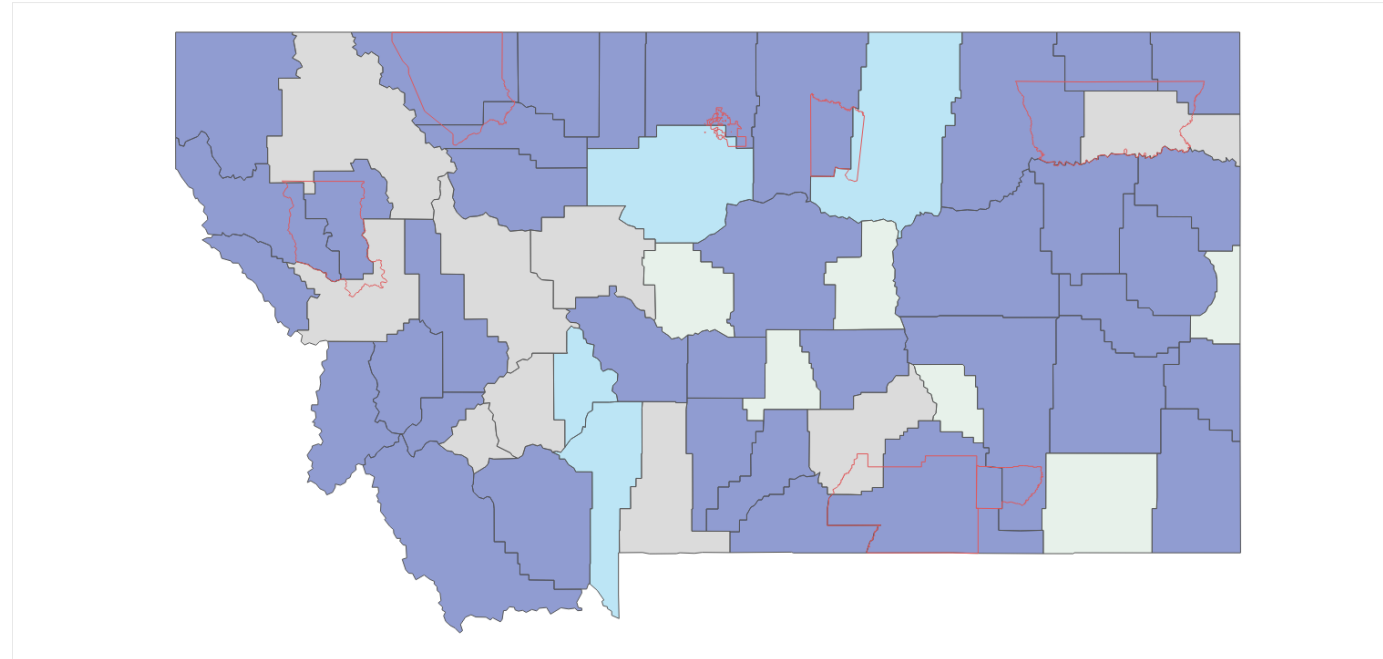
- 00:00:00 - 00:44:59
- 00:45:00 - 00:59:59
- 01:00:00 or greater



Risk Factor

Long Interfacility Total Call Time

Median total call time, ground ambulance IFM transports, 2024



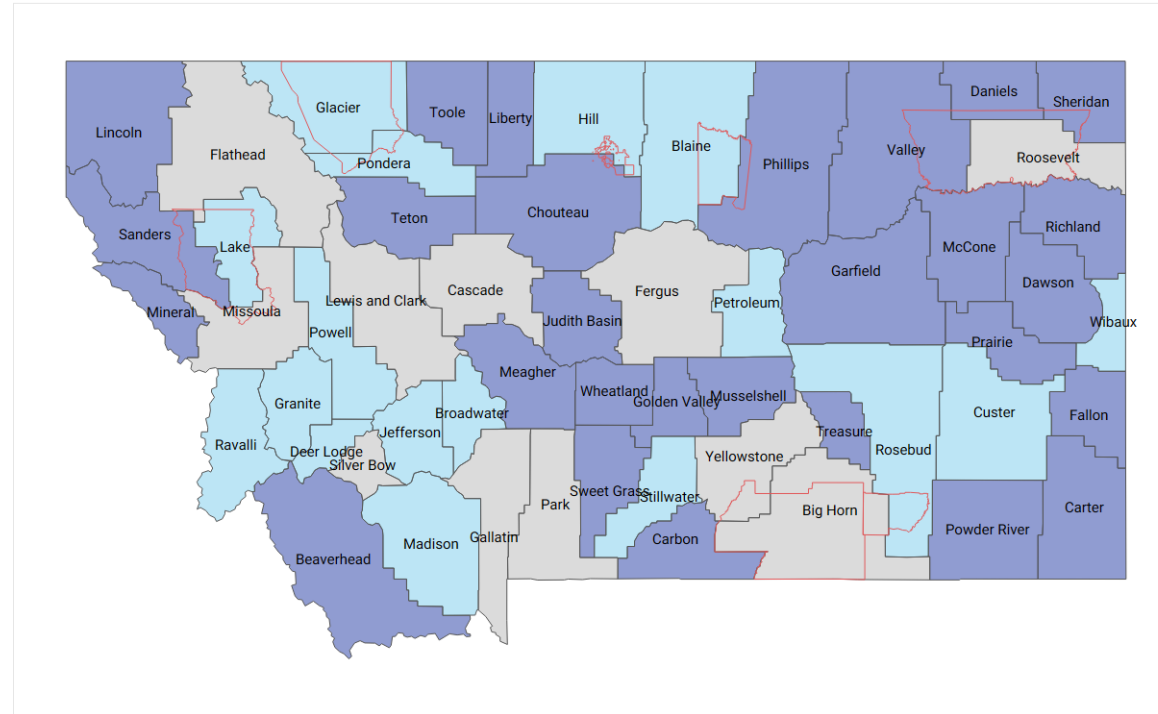
Legend

- No Data
- 00:00:00 - 01:29:59
- 01:30:00 - 01:59:59
- 02:00:00 or greater



Combined Risk Factors Underserved Areas

Counties with EMS Risk Factors, 2024



Legend

- 0-1 Risk Factors
- 2-3 Risk Factors
- 4 or more Risk Factors



DEPARTMENT OF
PUBLIC HEALTH &
HUMAN SERVICES

Funding EMS Education

2024-2025 DPHHS Support for EMS Education

- US Department of Transportation - \$49,700
- US Health and Human Services Block Grant - \$100,000
- US HHS HRSA Flex - \$106,000
 - \$56,000 HRSA Flex Funding
 - \$250,000 HRSA Flex EMS Supplement Grant (\$250,000 each year for 5 years)



Resources

2025 DPHHS Trauma System Legislative Report

<https://dphhs.mt.gov/assets/publichealth/EMSTS/2024TraumaLegislativeReportFinal.pdf>

EMS in Montana: Crisis on the Horizon

<https://dphhs.mt.gov/assets/publichealth/EMSTS/Data/EMSSurveyReport2020.pdf>

Licensed Montana EMS Services

<https://dphhs.mt.gov/assets/publichealth/EMSTS/EMS/LicensedMontanaEMSAgencies.pdf>

Ambulance Deserts: Geographic Disparities in the Provision of Ambulance Services

["Ambulance Deserts: Geographic Disparities in the Provision of Ambulanc" by Yvonne Jonk PhD, Carly Milkowski MPH et al.](#)

Treat and No Transport Reimbursement Review April 2023_Summary

<https://dphhs.mt.gov/publichealth/EMSTS/data#gsc.tab=0>



Contact Information

Shari Graham, EMS Systems Manager

Email: sgraham2@mt.gov



Conclusion



DEPARTMENT OF
**PUBLIC HEALTH &
HUMAN SERVICES**