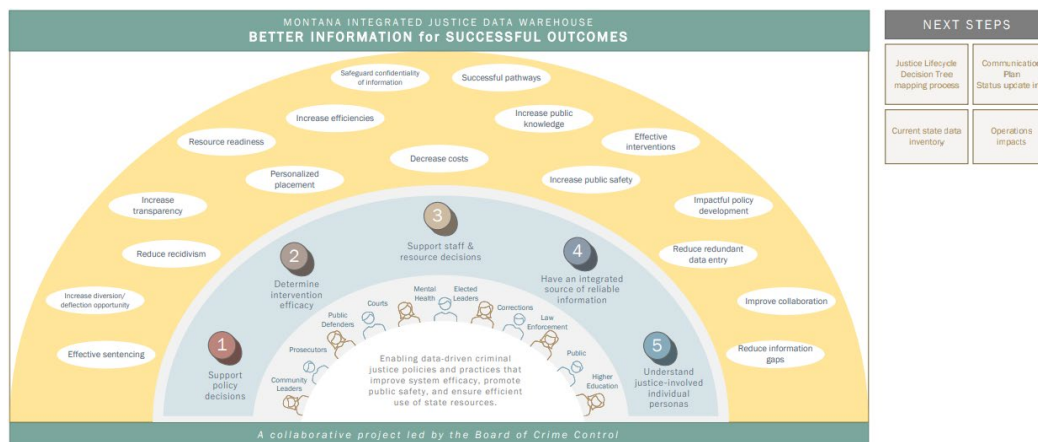




Integrated Justice System Data Project

In the 2023 legislative session, Senate Bill 11 was passed, which included the creation of an Integrated Justice Data Warehouse to be housed and managed within the Montana Board of Crime Control (MBCC), with oversight and direction provided from the Criminal Justice Oversight Committee (CJOC). The goal of this legislation was to create a central data repository to address the longstanding issues of fragmented and inconsistent data that have impeded effective policymaking, resource allocation, and overall criminal justice outcomes.

In working with partner agencies and other stakeholders, the objective is to create a system that integrates data collected by criminal justice system partners and agencies—from arrest to incarceration (if applicable) to look at how the system is working across a broad range of topics, from “what efficiencies can be created” and “how can redundant data entry be reduced or eliminated” to “how are policy decisions affecting arrest rates and prison and supervision population and recidivism”, as a few examples. More simply put, the goal is to take data from all the various disparate data systems and put them in one place so that effective policy, funding, and operational decisions can be made all while implementing in a way that supports and requires as little cost and additional effort as possible from local partners. The CJOC created and adopted an infographic that helps to broadly explain the intended objectives and outcomes of this project (click [here](#), or see infographic below).



Additionally, more information can also be found here: <https://mbcc.mt.gov/Data/Criminal-Justice-Data-Warehouse>.

In support of this project and our local partners, MBCC has negotiated with CentralSquare and purchased the Application Programming Interface (API) component for agencies statewide that have not already purchased it from CentralSquare. While this component is essential for the Integrated Justice Data Warehouse project, it is a functionality that can also be used for other data share needs your agency may have. We are currently working with our first pilot project county, Ravalli, to work through the data sharing process—from data field selection to the MOU process, and are aiming to start the API onboarding process with them and CentralSquare in the next month or two. We hope to templize the process as much as possible to make the onboarding of other counties/agencies as quick and efficient as possible.

If you and/or your county are excited to be early participators in this project, or if you just want more information, please let us know. We are more than happy to set up individualized or group calls to share more detailed information and answer any additional questions you may have.