





Who is RiverStone Health?



Mission: Improve Life, Health, & Safety

Four mission essential functions:

- **City-County Public Health Department**
- **Community Health Center (FQHC)**
- **Education & Training Centers**
 - Montana Family Medicine Residency
 - Eastern Montana AHEC
 - Montana AETC
- **Home Health & Community Hospice**



Child Maltreatment Interventions

Prevention

- Welcome Baby
- Nurse-Family Partnership and Maternal Child Health Home Visiting
- Parents As Teachers

Evaluation

- Yellowstone Valley Child Advocacy Center
- S.A.N.E (Billings Clinic)
- Child Safety and Wellness Clinic

Treatment

- KidsFirst Nurse Care Management Program
- KidsJourney Clinic
- Pediatric Behavioral Health Providers : TF-CBT, CPP, SMART



YVCAC Established in 2012

- Law Enforcement (3 departments)
- Prosecution
- Child Protective Services
- Medical
- Mental Health
- Victim Witness
- CAC Advocate
- CAC Coordinator



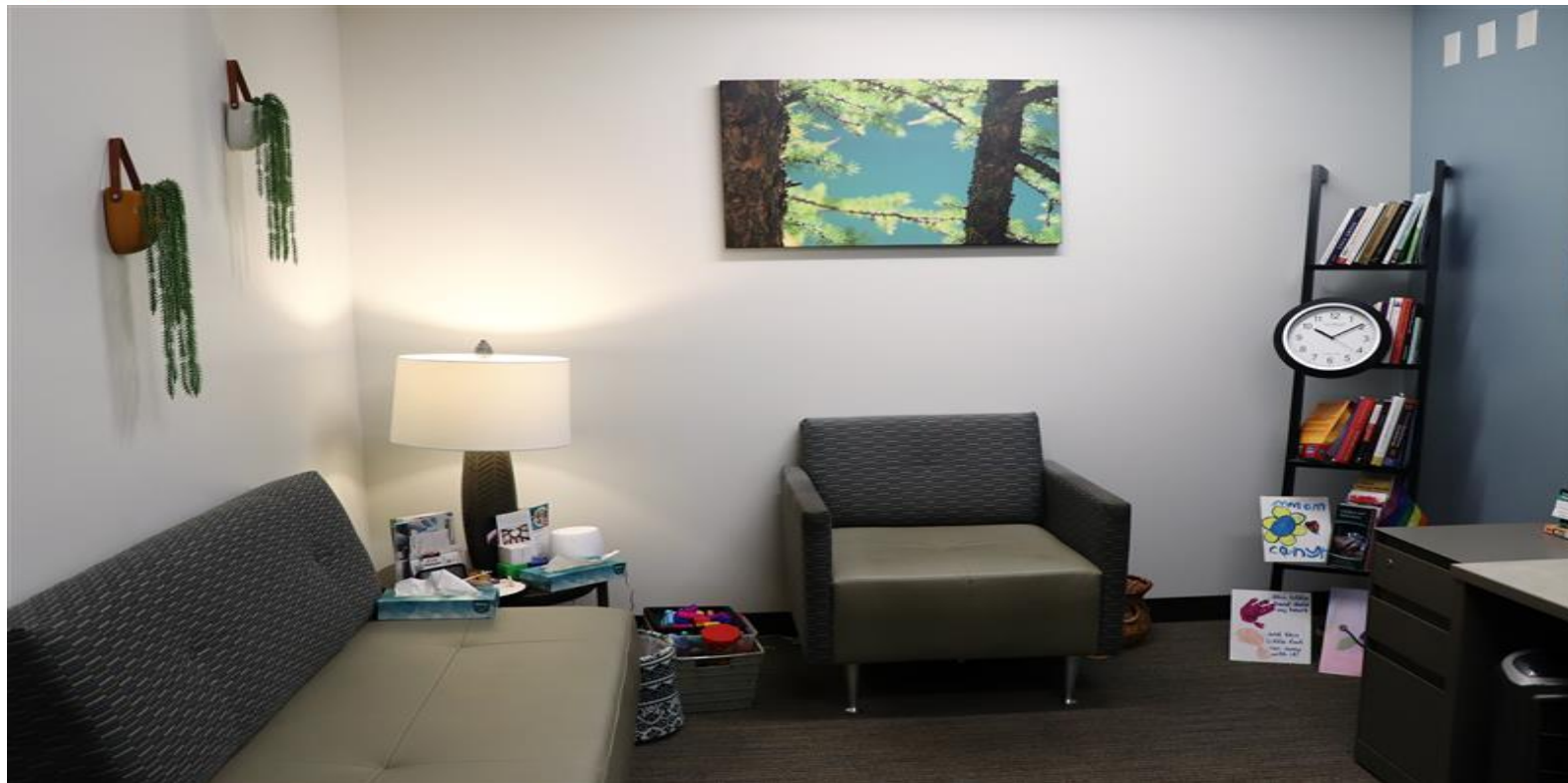




Advocacy



Pediatric Behavioral Health





Sensory Motor Arousal Regulation Therapy (S.M.A.R.T)



Role of medical on CAC team

- Educate MDT members
- Provide expert guidance to other providers, CPS, Law enforcement
- Participate in case reviews
- Write and develop medical policies
- Conduct medical exam
- Provide expert testimony in court





Why is a medical exam important?

- Screen for behavioral health concerns
- Evaluate for other unmet medical concerns
- Evaluate any injuries and document appropriately
- Order additional testing as needed and treat medical concerns
- Answer questions
- Provide reassurance
- Document further disclosures

Child has control over exam



Child Safety and Wellness Clinic (CSW)

- Started seeing patients in late 2024
- Goal is to provide evaluations for children/teens who have experienced abuse
 - Available to every child/teen who has had a FI
 - Referrals from CPS, LE, and other medical providers in the community
 - Follow-up from SANE evaluations









Challenges

Insufficient number of trained medical providers

- **Barriers:**
 - Training is intensive and stakes are high
 - Limited system for support or consults
 - High burnout rate
 - Cost prohibitive
- **Solutions:**
 - Consistent funding for supportive agencies (CAM)
 - Establish a statewide network of expert providers (hub and spoke model)
 - More sustainable re-imburement model for expert providers



Challenges

Inadequate access to BH providers with trauma training

- **Barriers:**
 - Rural communities
 - Training is intensive
 - Poor Medicaid reimbursement
- **Solutions:**
 - Consistent funding for supportive agencies (CAM)
 - Telehealth expansion
 - Increased Medicaid reimbursement and decreased documentation burden



Challenges

- Inadequate prevention programs and services

This is a whole other talk!