

Summer – Drought Outlook Report

Water Policy Interim Committee

July 30, 2025

Michael Downey – DNRC, Drought Program Coordinator

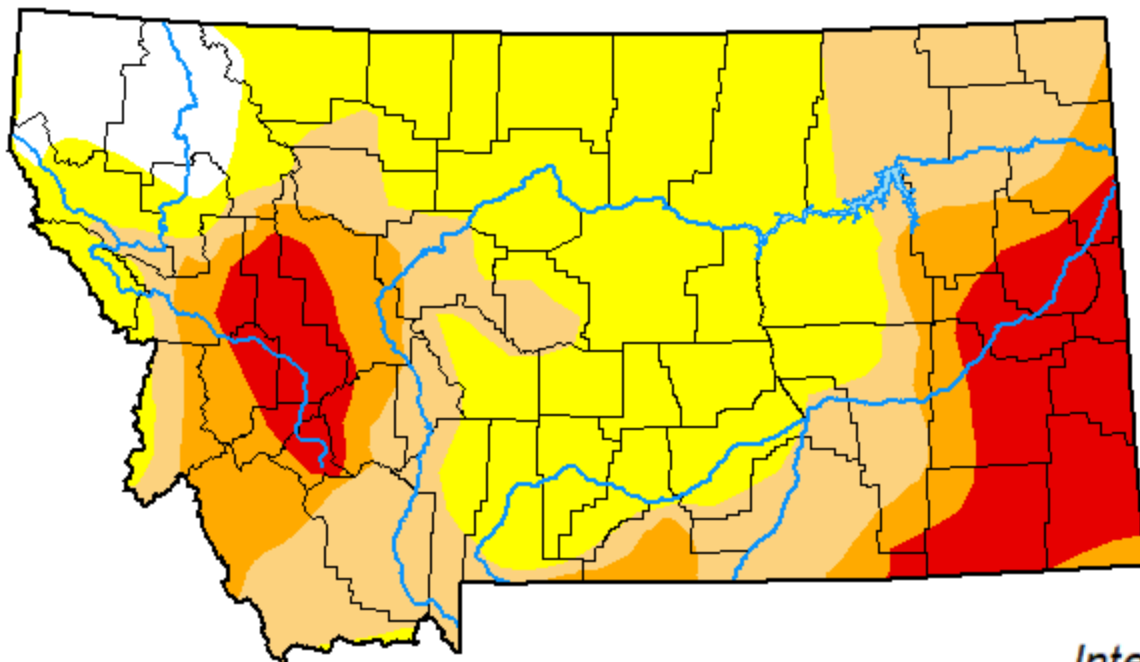


Cumulonimbus cloud over the prairie, near Augusta, MT

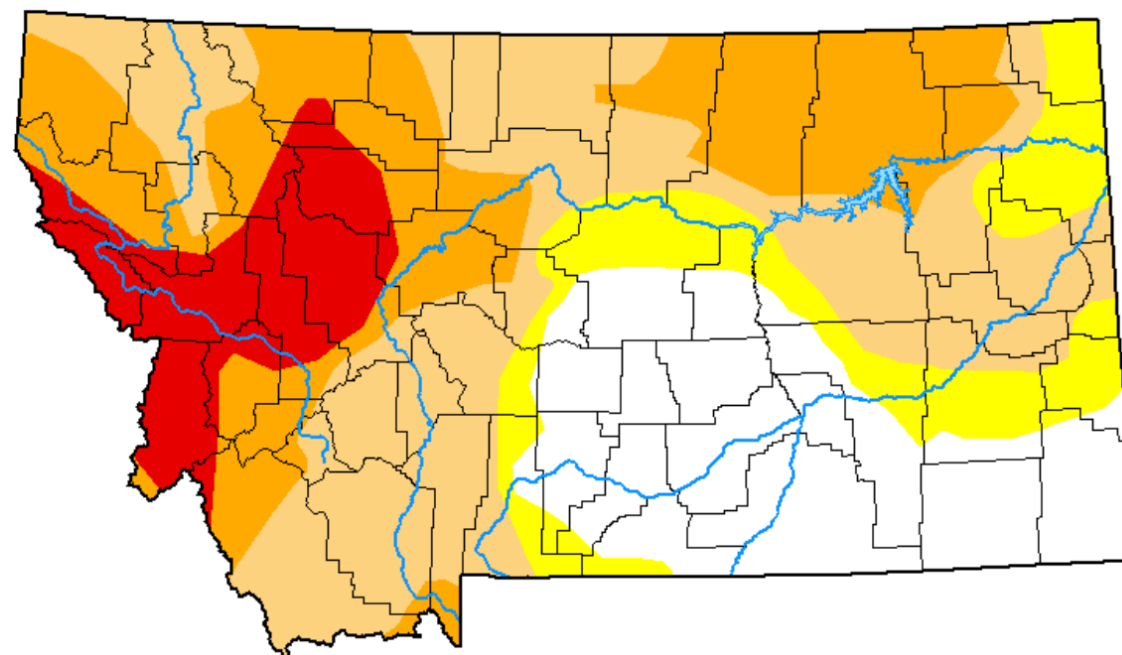
Photo: Michael Downey



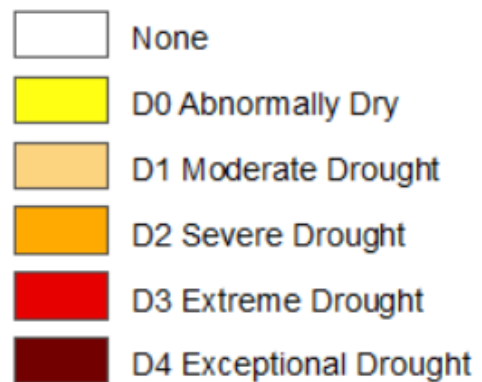
US Drought Monitor 12/31/24



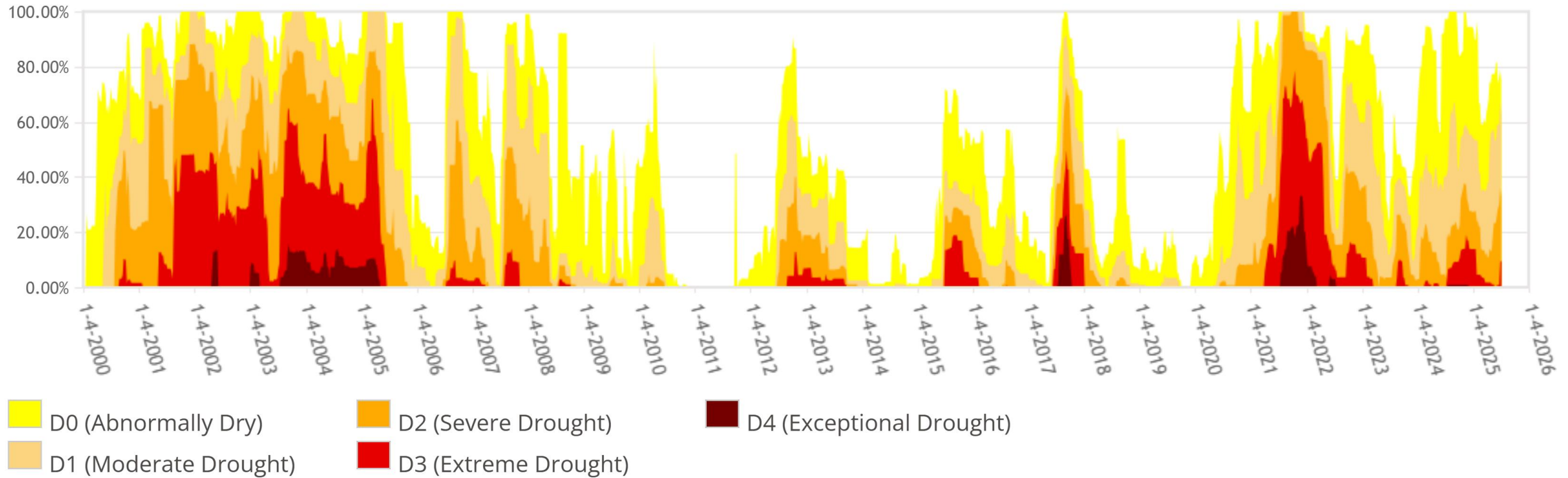
US Drought Monitor 7/24/25



Intensity:



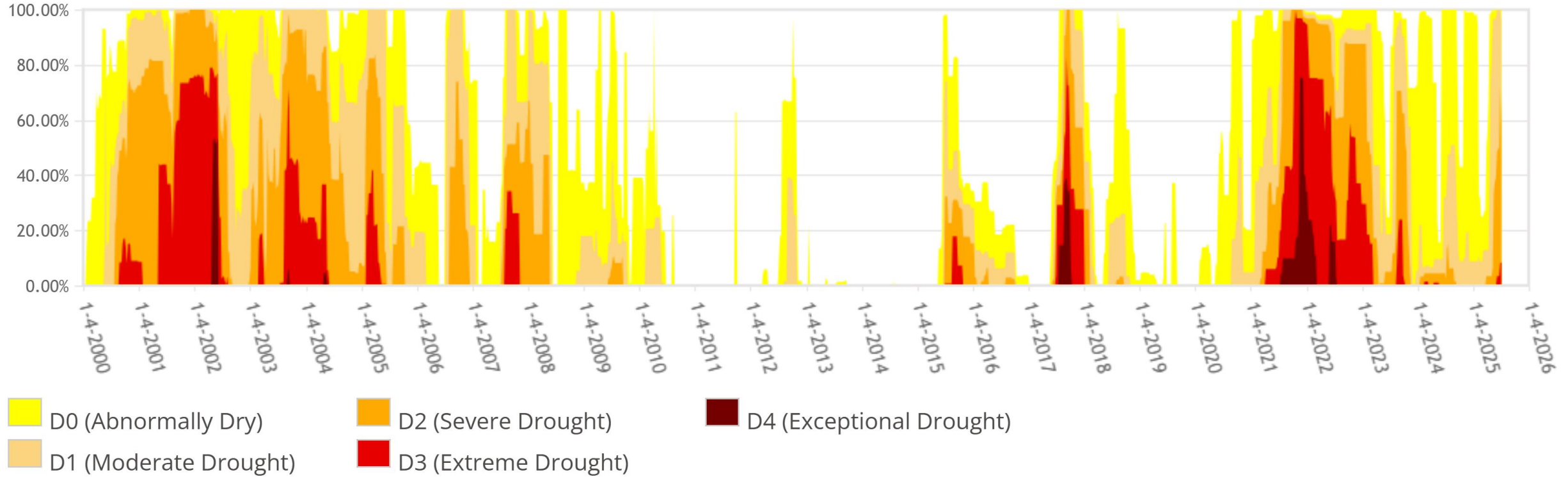
Montana Percent Area in U.S. Drought Monitor Categories



From the U.S. Drought Monitor website, <https://droughtmonitor.unl.edu/DmData/TimeSeries.aspx>, 7-15-2025



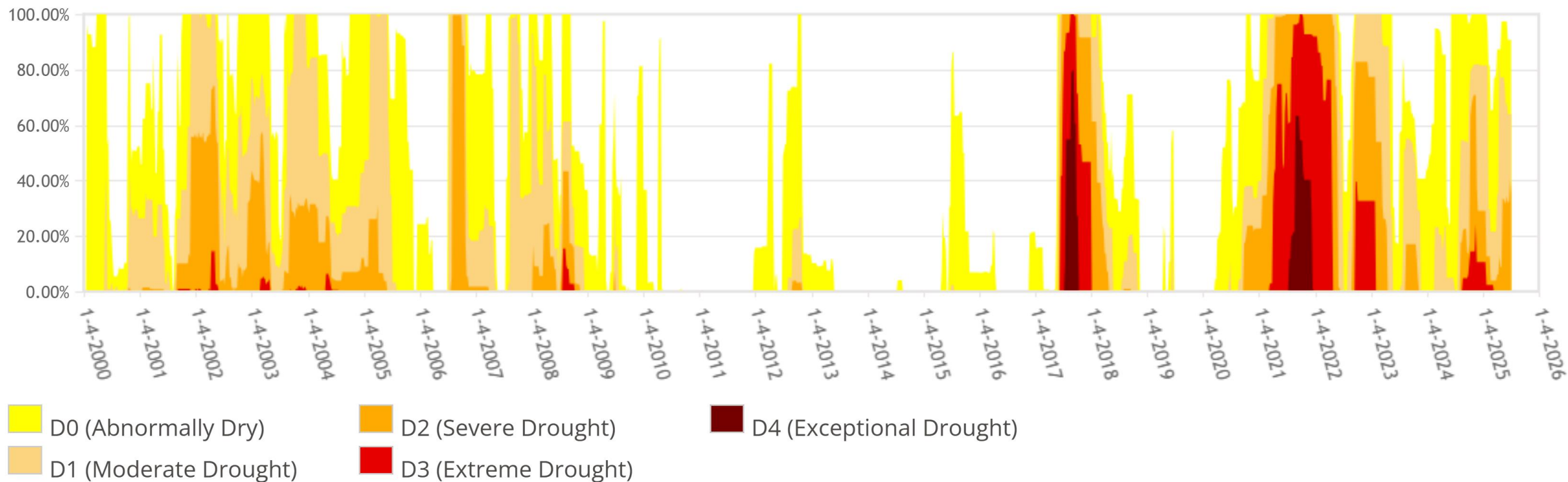
North Central, MT (2403) Climate Division Percent Area in U.S. Drought Monitor Categories



From the U.S. Drought Monitor website, <https://droughtmonitor.unl.edu/DmData/TimeSeries.aspx>, 7-15-2025



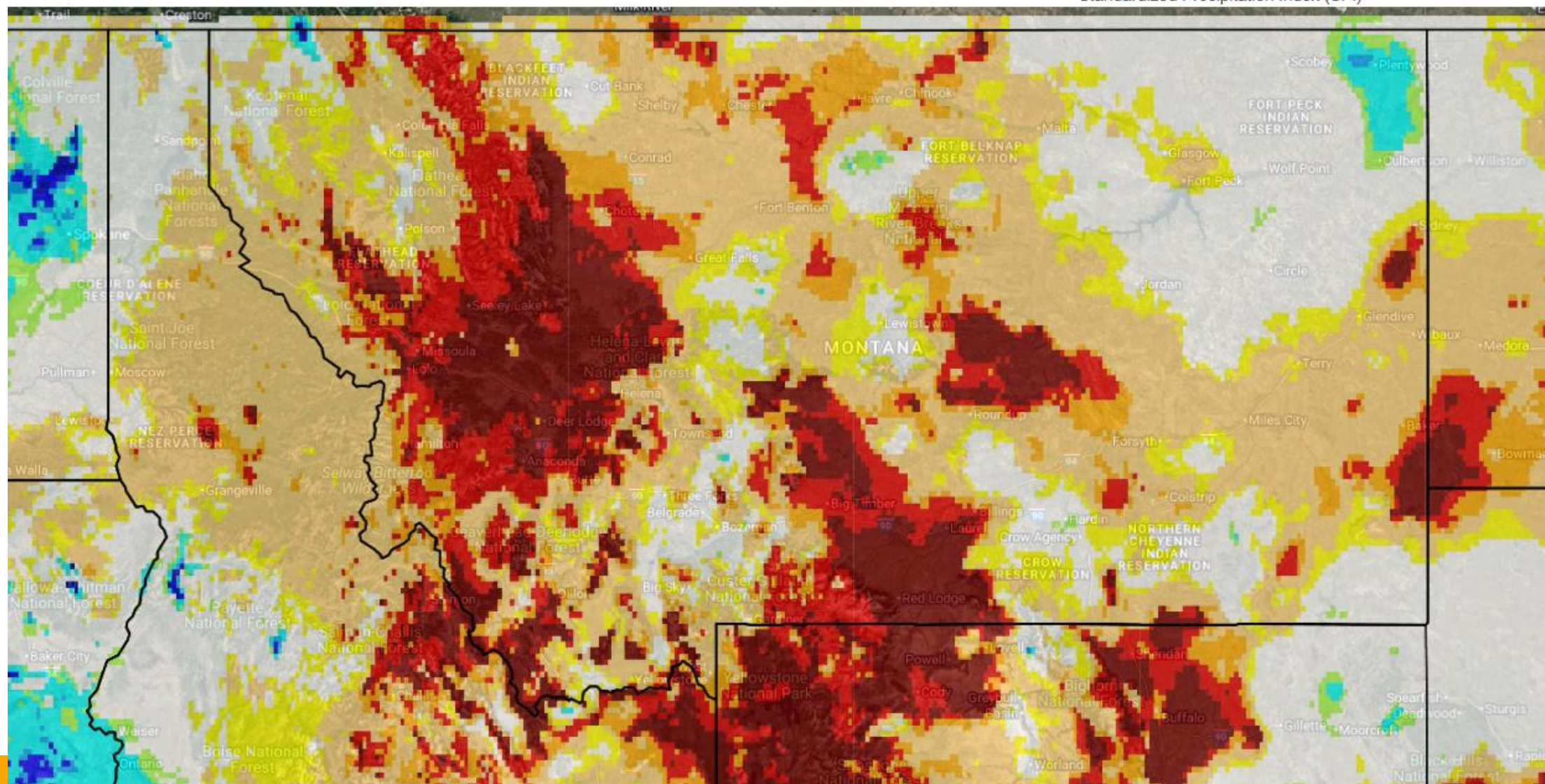
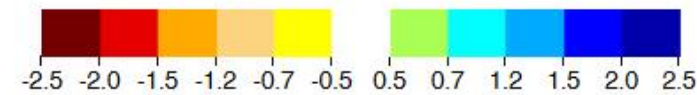
Northeastern, MT (2406) Climate Division Percent Area in U.S. Drought Monitor Categories



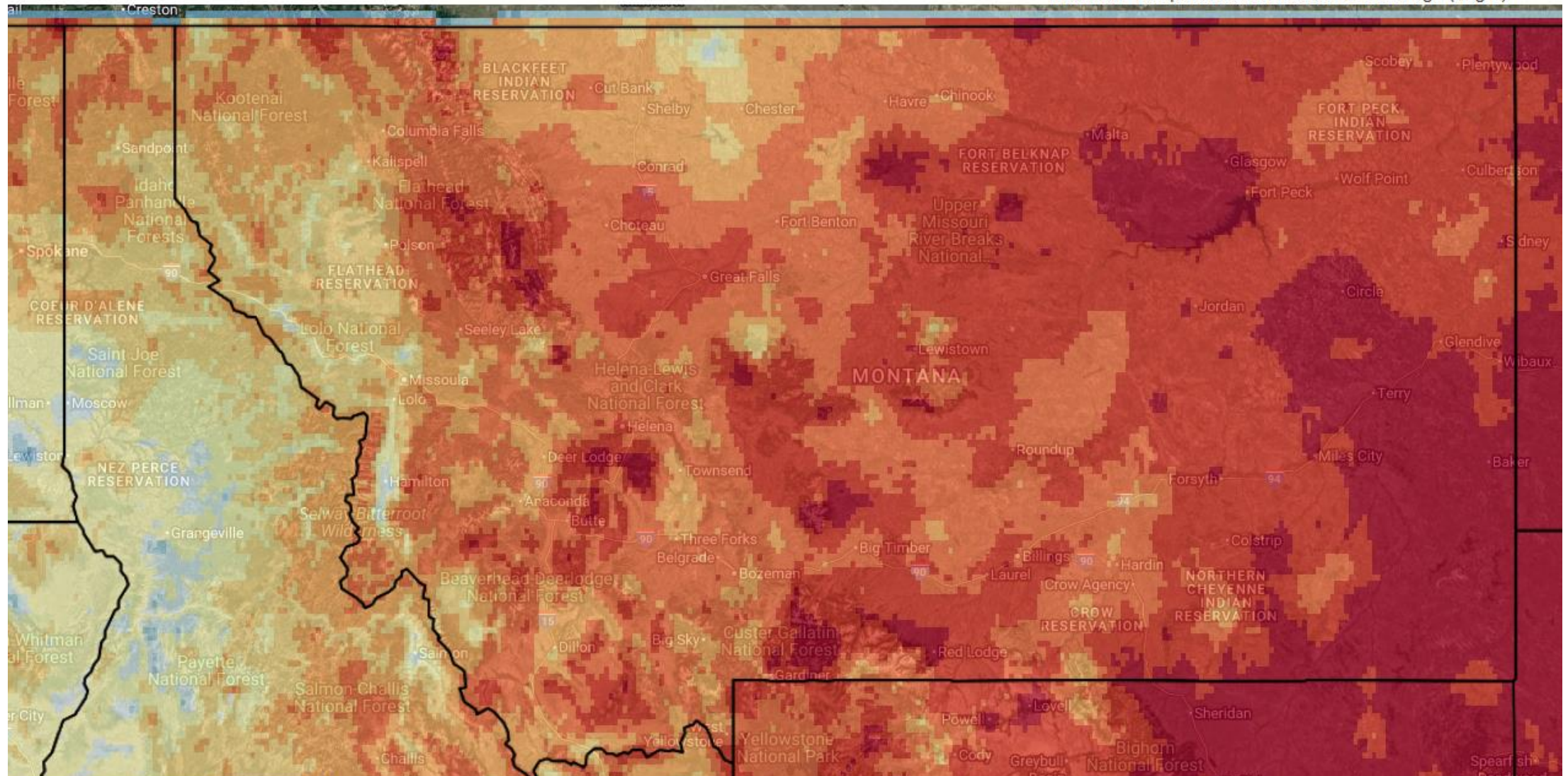
From the U.S. Drought Monitor website, <https://droughtmonitor.unl.edu/DmData/TimeSeries.aspx>, 7-15-2025



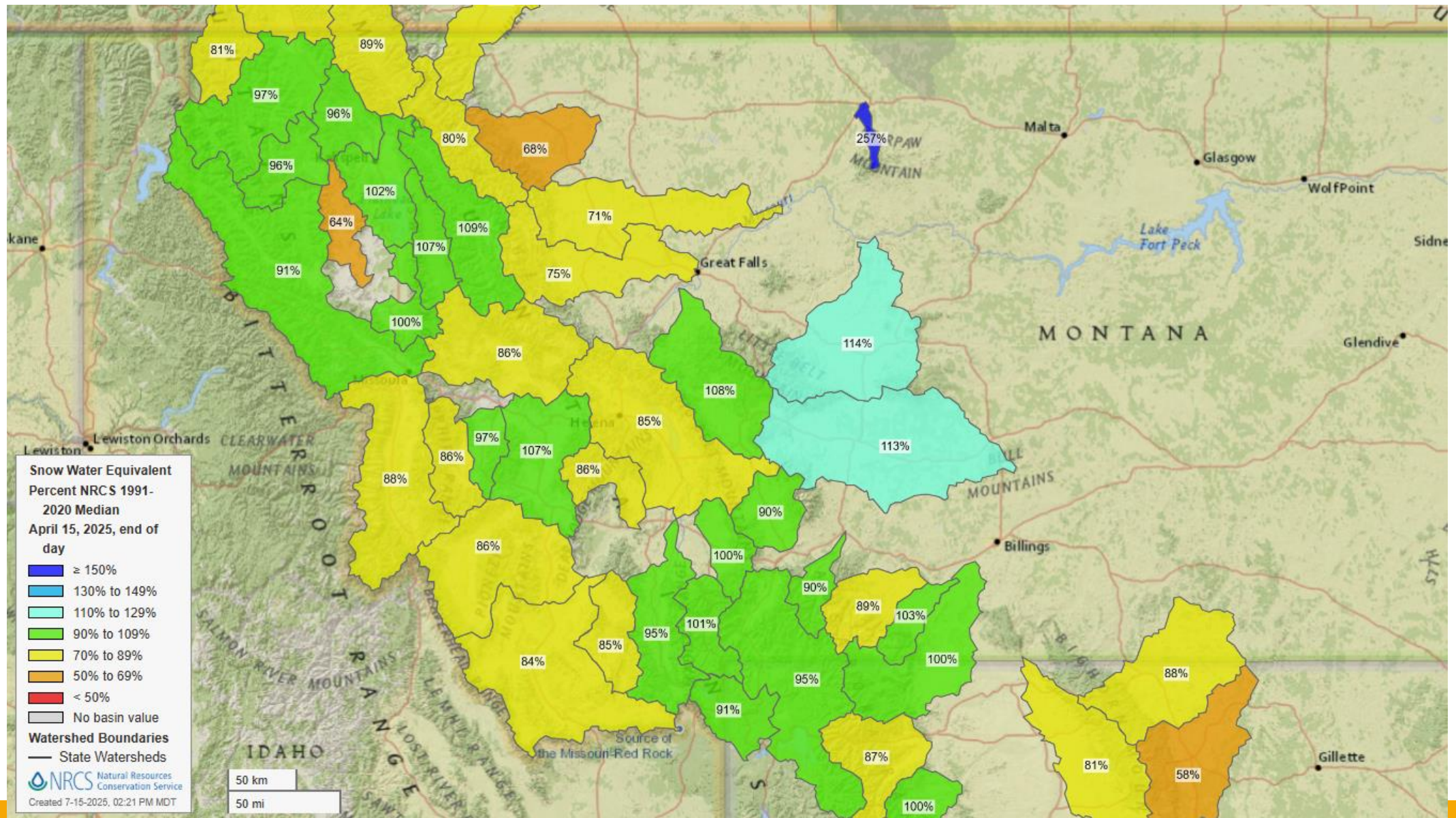
Standardized Precipitation Index (SPI) 10/01/24 – 1/31/25



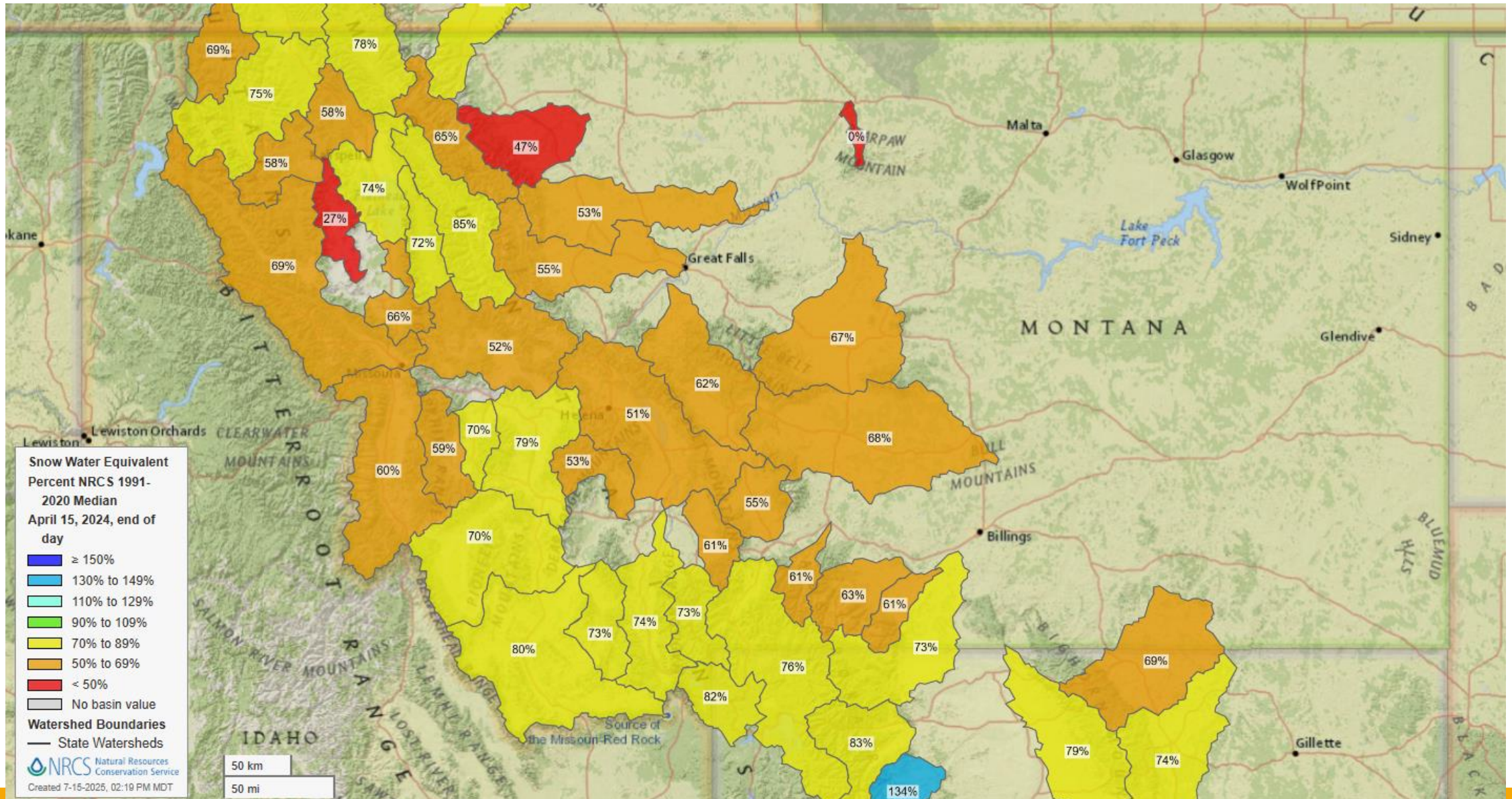
Maximum Temperature – Difference from Average -
9/01/24 – 10/31/24



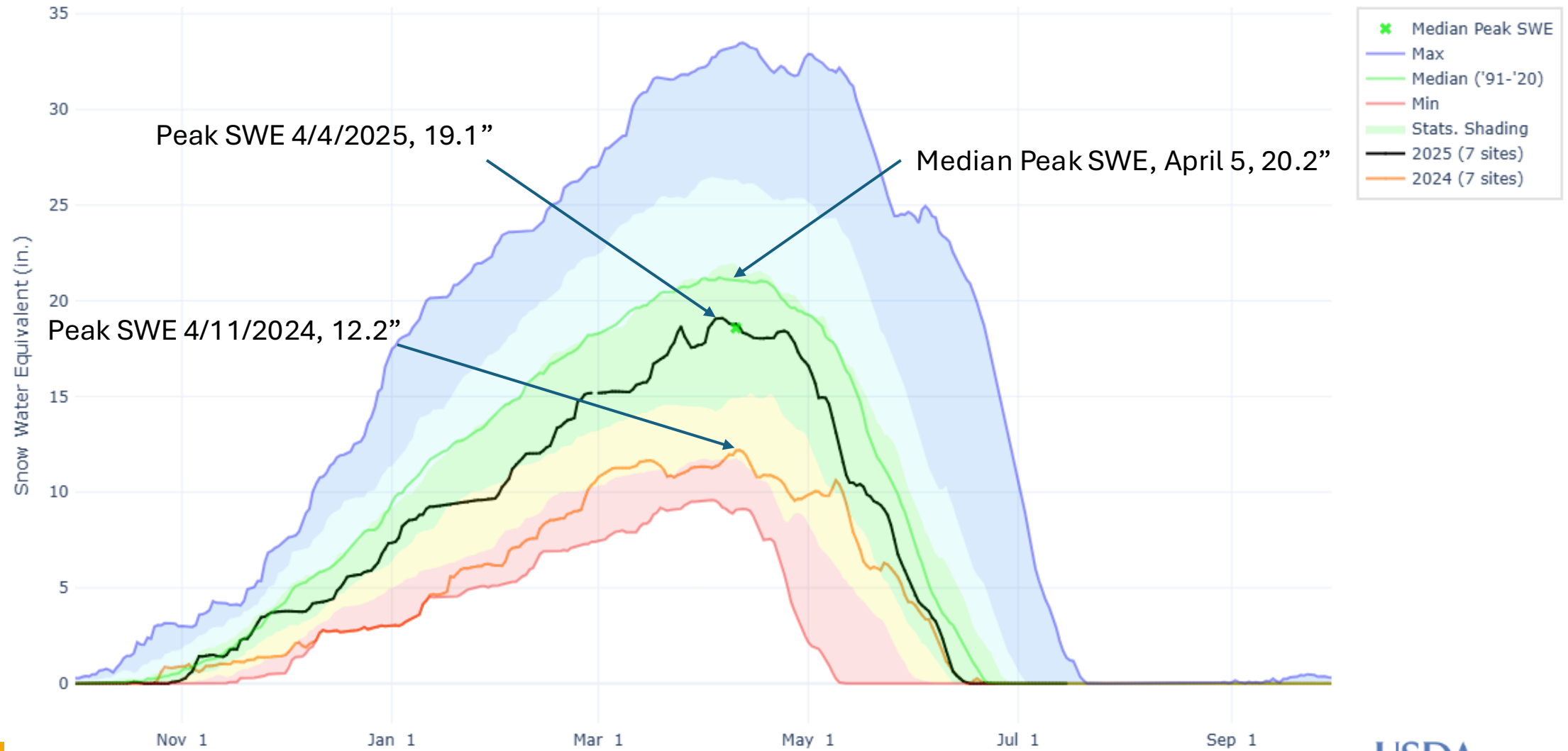
Snow Water Equivalent by Basin 4/15/25



Snow Water Equivalent by Basin 4/15/24



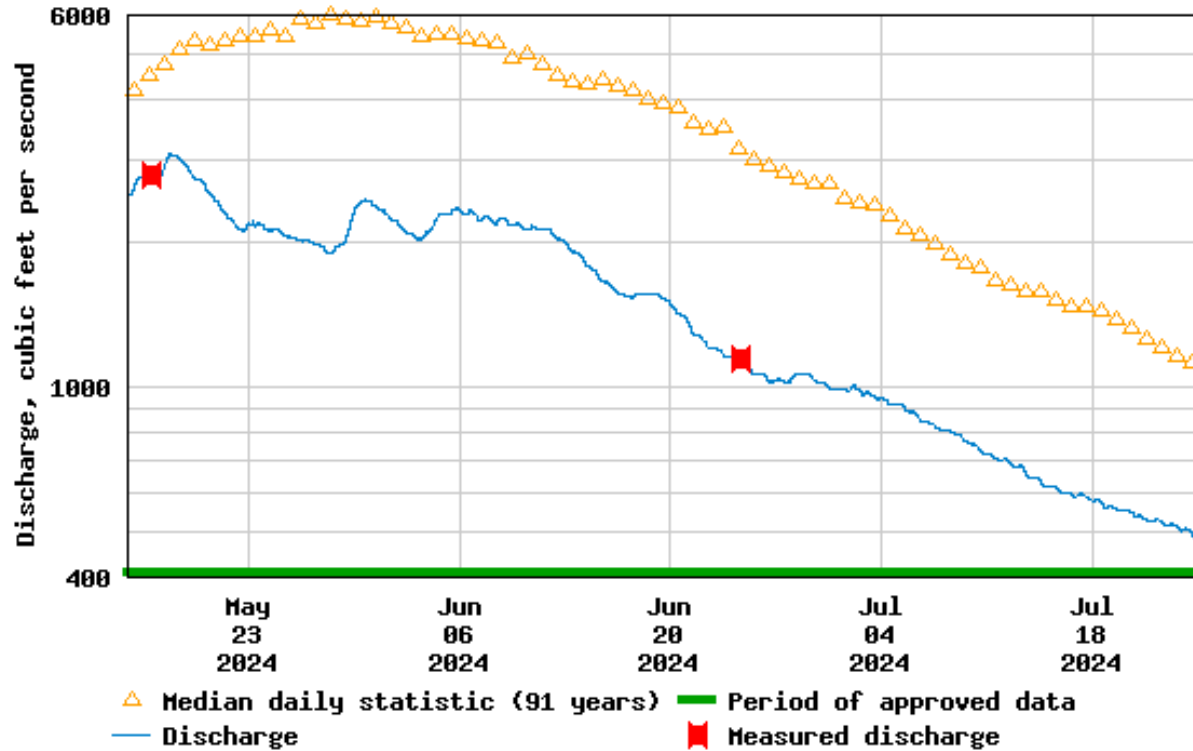
SNOW WATER EQUIVALENT IN BLACKFOOT



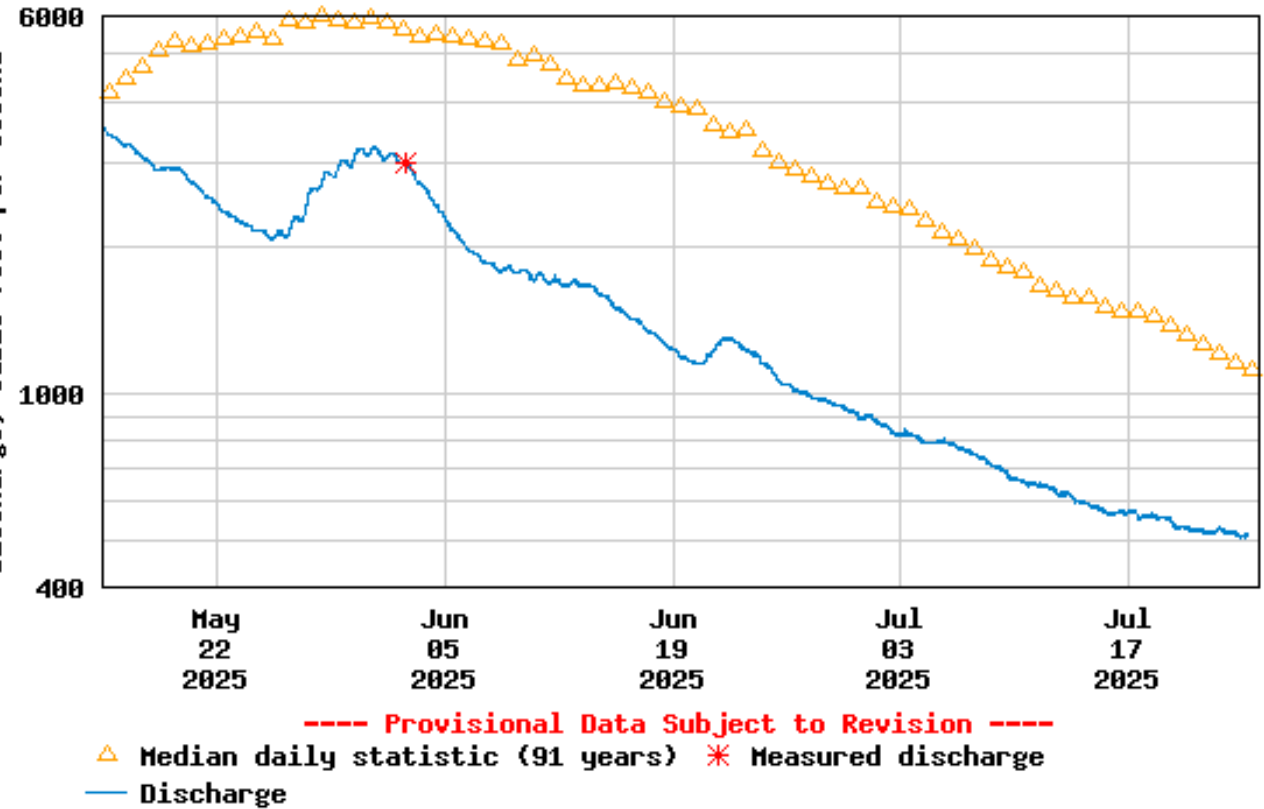
Blackfoot River near Bonner 5/15/24 – 7/24/24

vs Blackfoot River near Bonner 5/15/25 – 7/24/25

USGS 12340000 Blackfoot River near Bonner MT

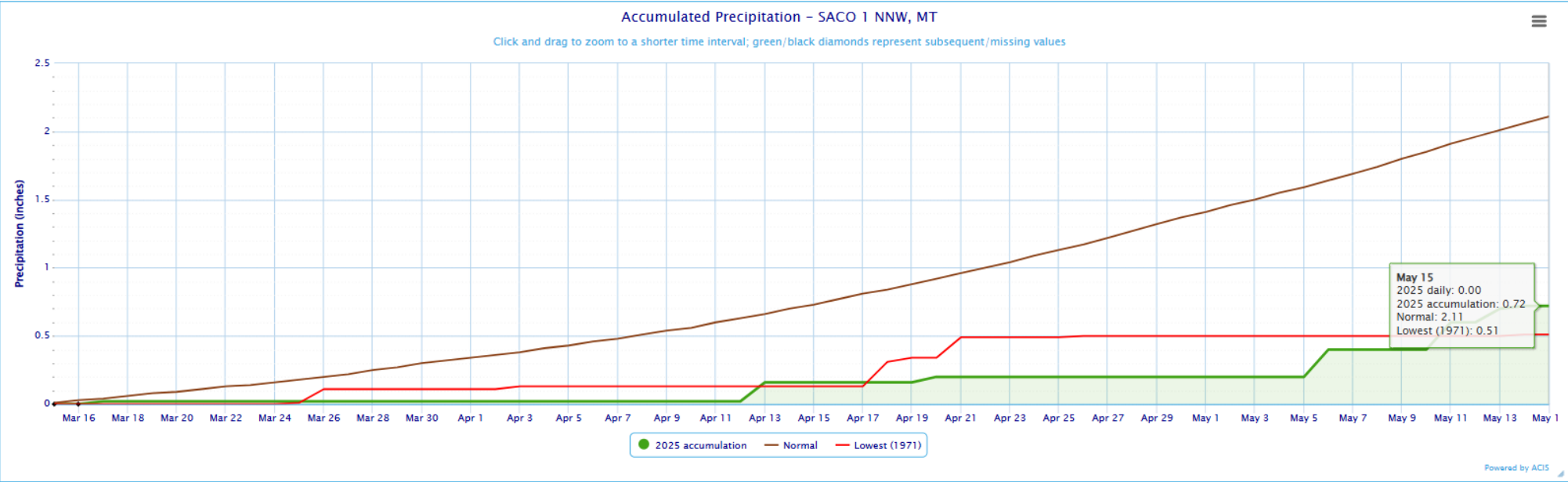


USGS 12340000 Blackfoot River near Bonner MT

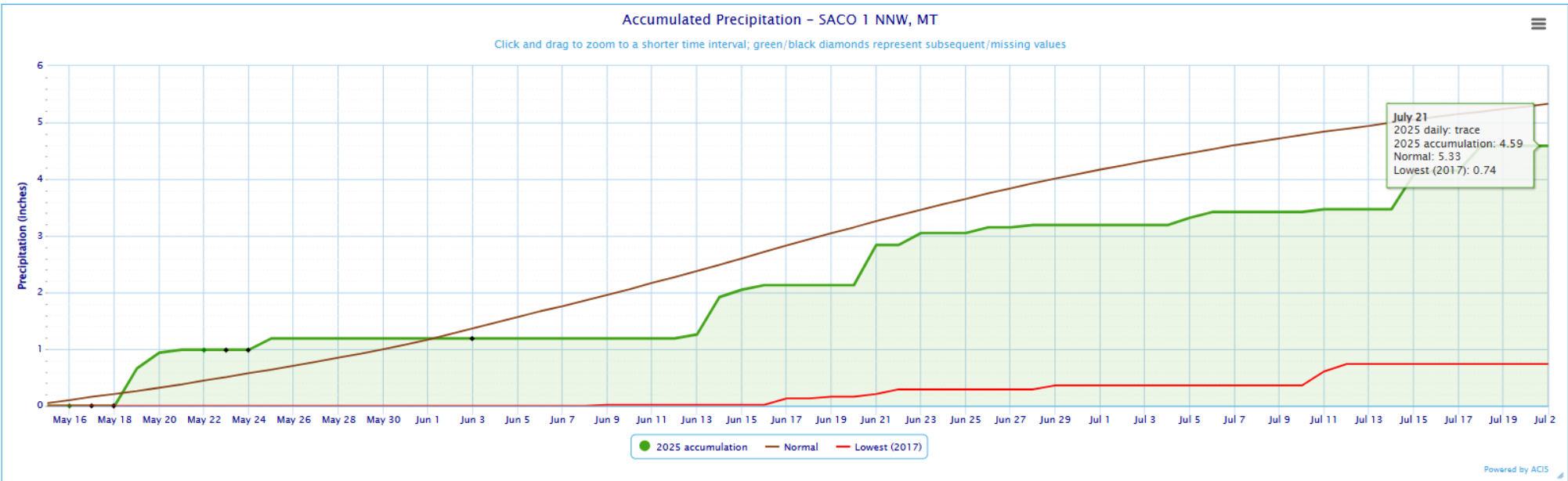


North Central MT

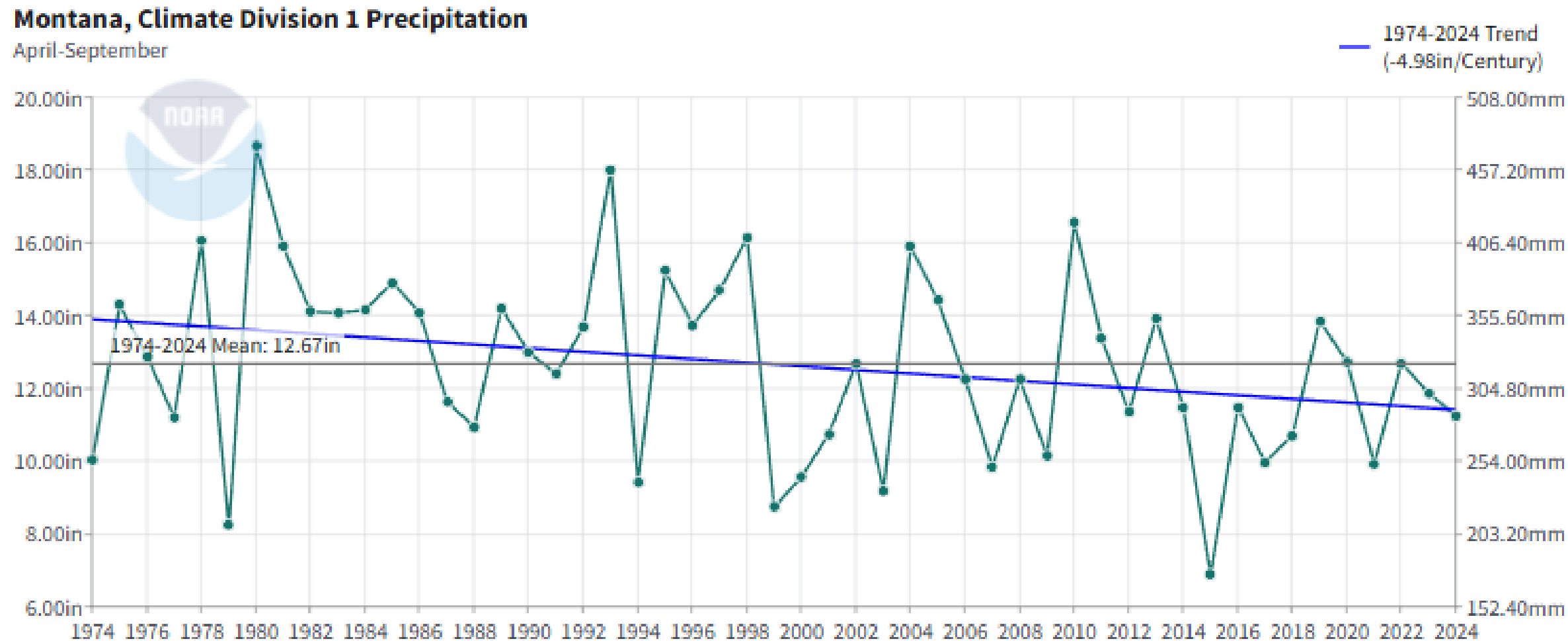
Saco – Precipitation
3/15/25 – 5/15/25



Saco – Precipitation
5/15/25 – 7/15/25



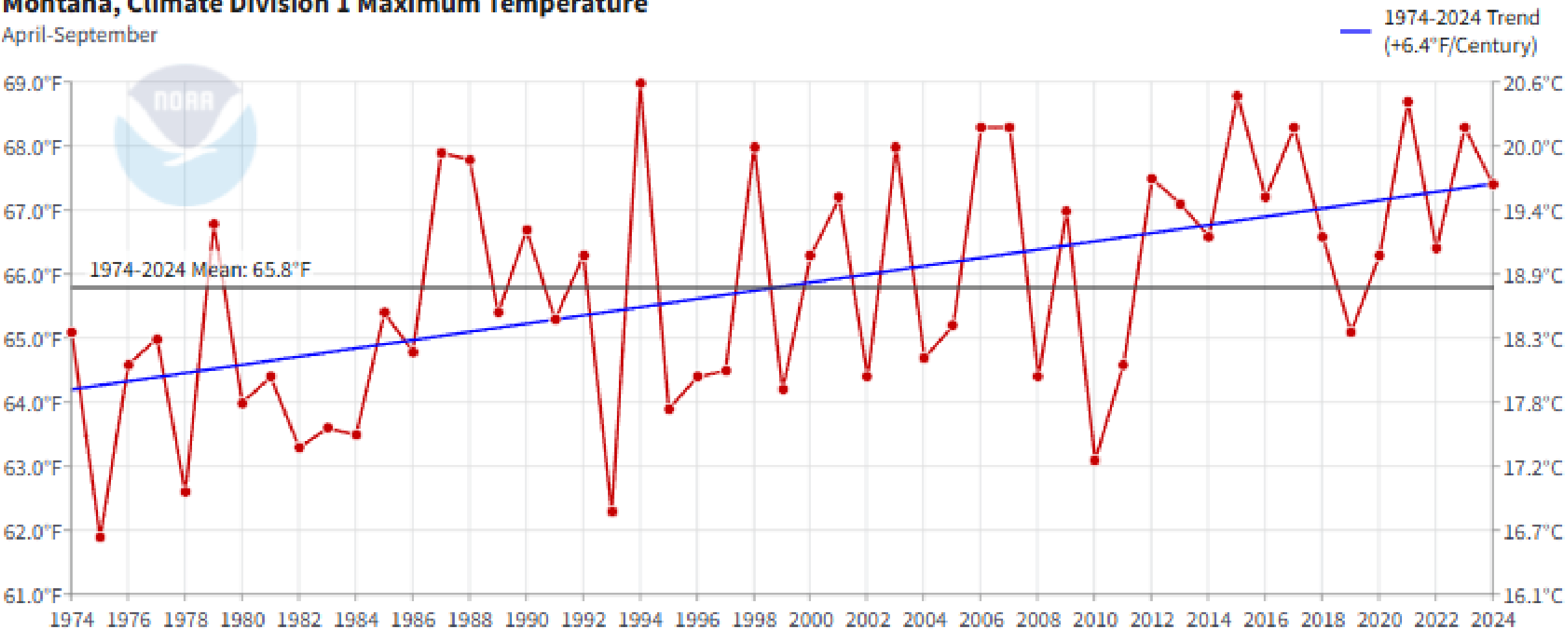
Montana Climate Trends – NOAA /Climate at a Glance – Accumulated Precipitation by Year - Western Montana



Montana Climate Trends – NOAA /Climate at a Glance – Average Maximum Temperature - Western Montana

Montana, Climate Division 1 Maximum Temperature

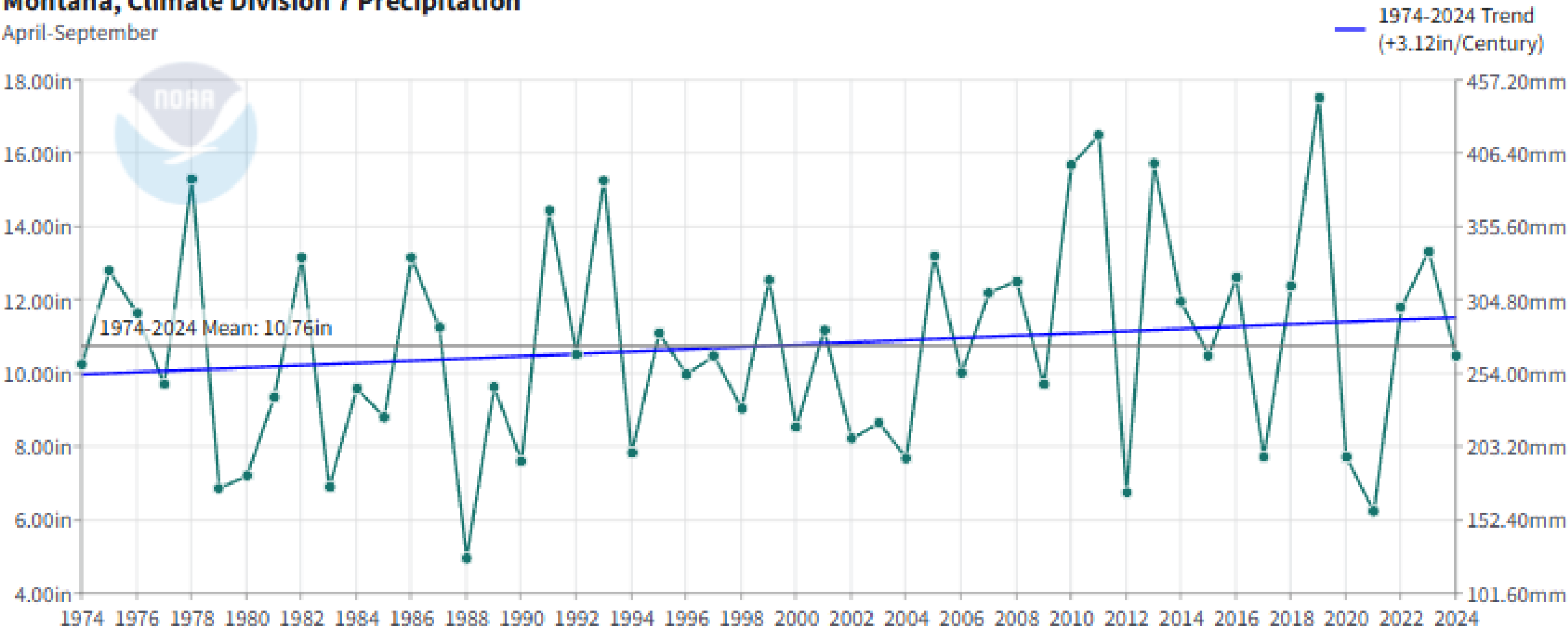
April-September



Montana Climate Trends – NOAA /Climate at a Glance – Accumulated Precipitation by Year - Southeastern Montana

Montana, Climate Division 7 Precipitation

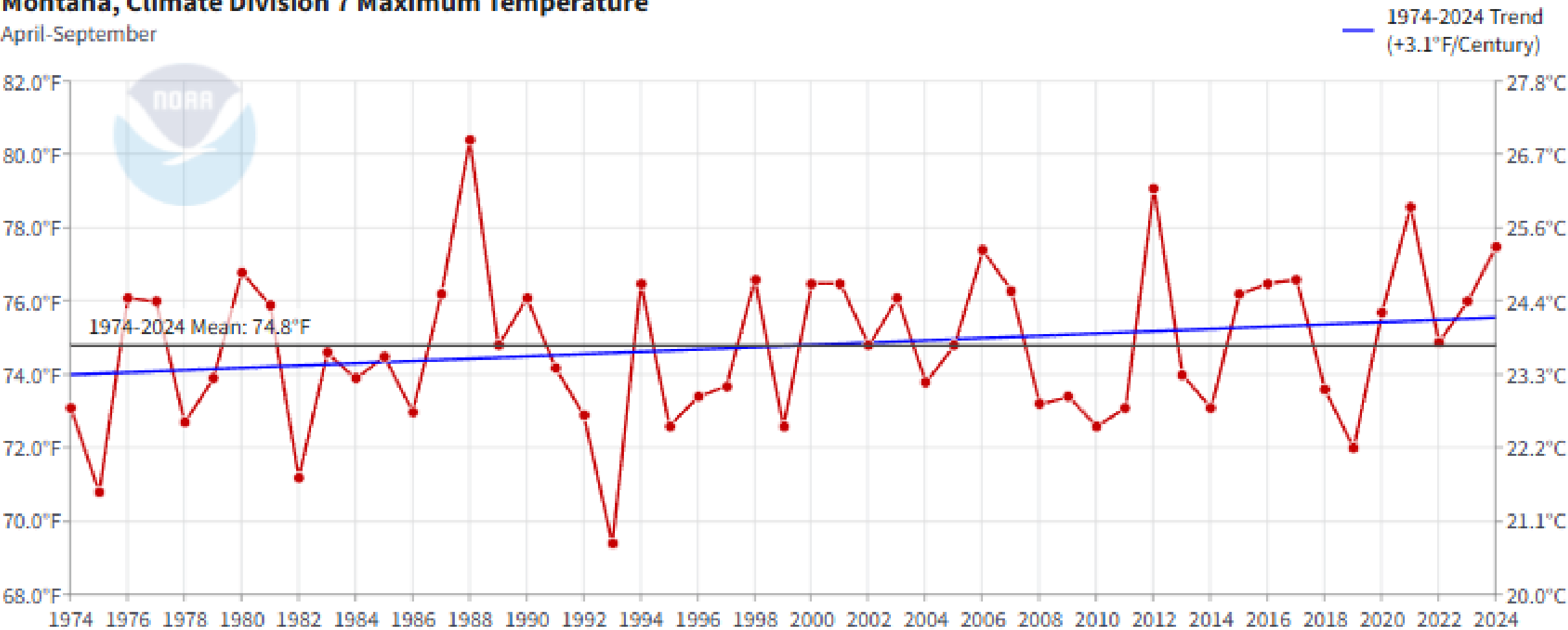
April-September



Montana Climate Trends – NOAA /Climate at a Glance – Average Maximum Temperature - Southeastern Montana

Montana, Climate Division 7 Maximum Temperature

April-September



Montana Drought Impact Reporter

Reports since October 1, 2024

7/17/2025: Garfield County

10 mile radius- normally storms come from the Northwest, this year they are coming from the Southwest. Where we would normally be getting the rain, we have been on the edge.

Experience: 20 or more years
Photo: No

7/16/2025: Blaine County

The pictures are of the same field, same view, but different years. The first one was taken today July 16, 2025. The other was taken June 23, 2020. We have been experiencing ongoing drought for the last 4 years. This gives you an idea of what is should look like right now. The grasshopper infestation has cleared most of our grazing on top of the drought.

South Blaine County
Experience: 20 or more years
Photo: Yes

7/15/2025: Blaine County

The drought conditions continue to persist, we have gotten some showers, but with wind and warm temperatures the benefits do not last. The drought conditions are very wide spread.

Experience: 20 or more years
Photo: No

7/15/2025: Garfield County

Localized in south east corner of Garfield COUNTY. Drought continues east into Prairie county. Dry all along the eastern Garfield COUNTY line.

Experience: 20 or more years
Photo: No

7/15/2025: Daniels County

General to the area.

Experience: 20 or more years
Photo: No

7/14/2025: Blaine County

we harvested appx. 35% of normal hay production, grasshoppers are abundant, left several fields unharvested due to low yields and essive dry conditions surrounding area

Experience: 20 or more years
Photo: No

7/14/2025: Dawson County

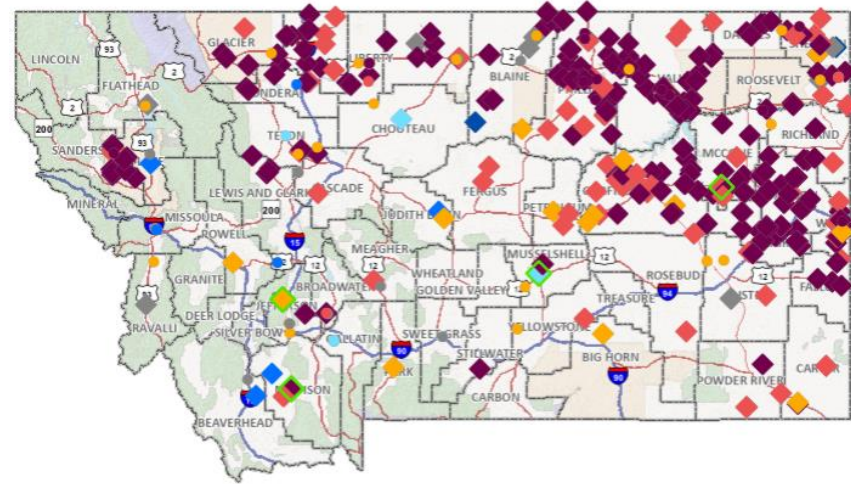
The conditions are at least two or three counties widespread.

Experience: 20 or more years
Photo: No

7/14/2025: Sheridan County

Conditions are going backwards Crops benefited from rains in June - but heat since then is sapping ground moisture Water remains significantly below normal in soil/dugouts patchy storms have resulted in extremely variable conditions in small distances

From ND stateline heading west at least past highway 16
Experience: 20 or more years
Photo: No



Montana State Library | National Drought Mitigation Center, University of Nebraska

Powered by Esri

Overview Map Photo Map Impact Type Map Crop Condition Map Range Condition Map All Years All Photos

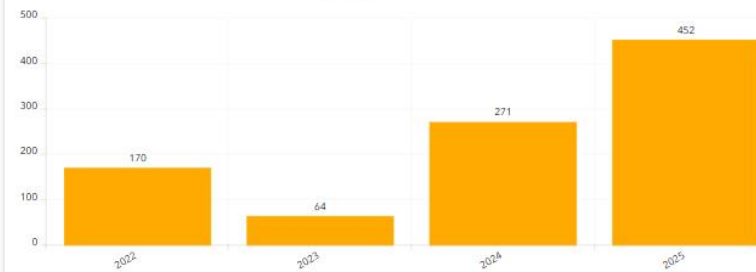
Number of Reports in the Last 10 Days

24

Last 10 Days

Total

Number of Reports by Year



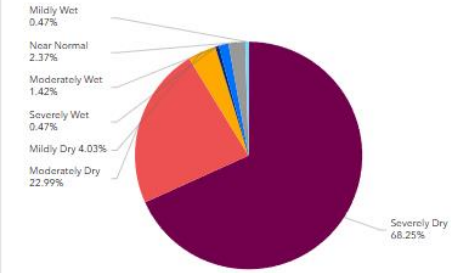
Reports by Date

Reports By County

Photos by Date

Reports by Year

How Wet or Dry is it?



How Wet or Dry is it?

2 of 50

7/13/2025 - Garfield County

Description: Drought conditions are more severe than shown on the drought map. All counties in D2 should be at least D3 at a minimum.



Photos

Photo Viewer

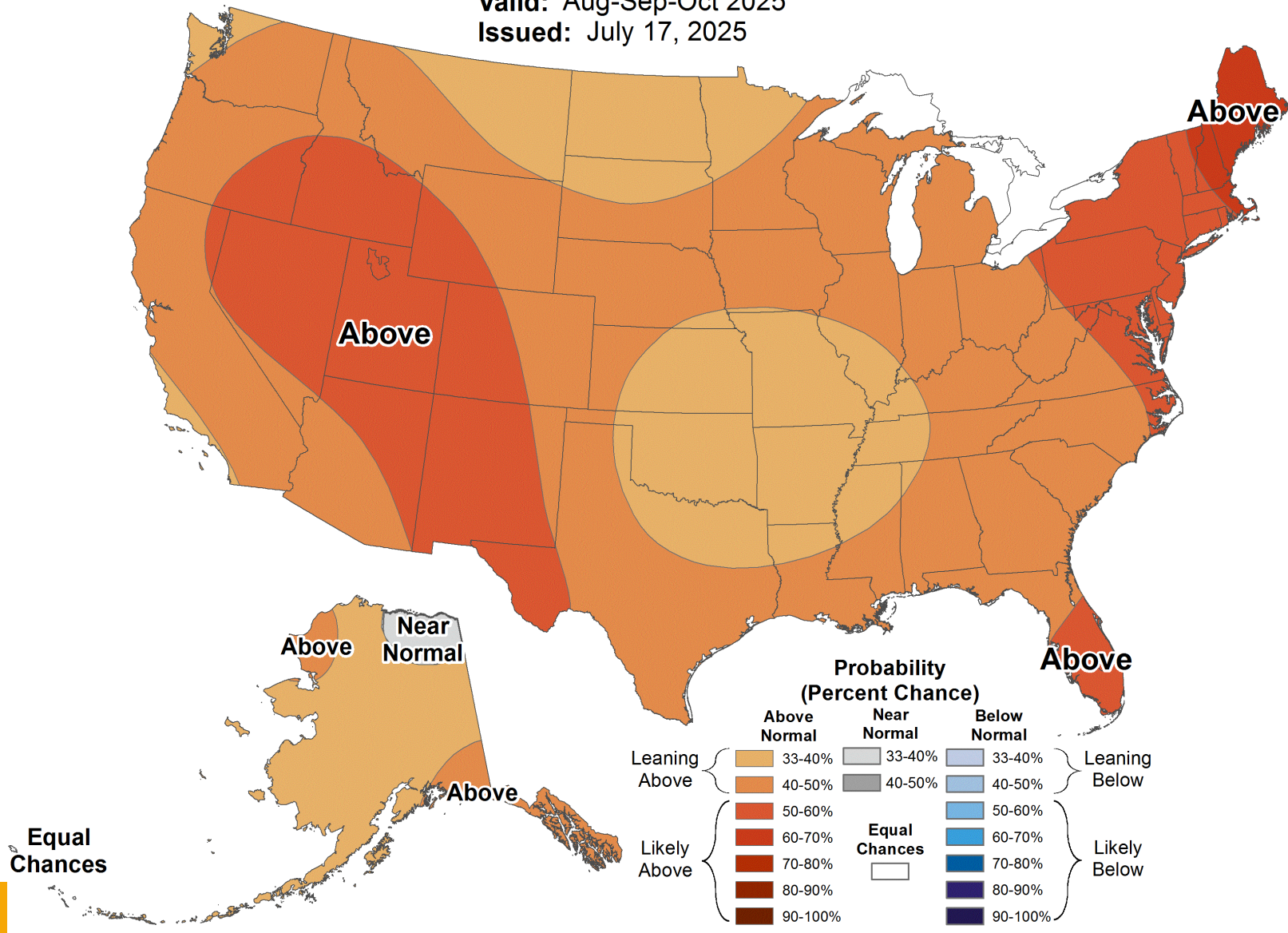


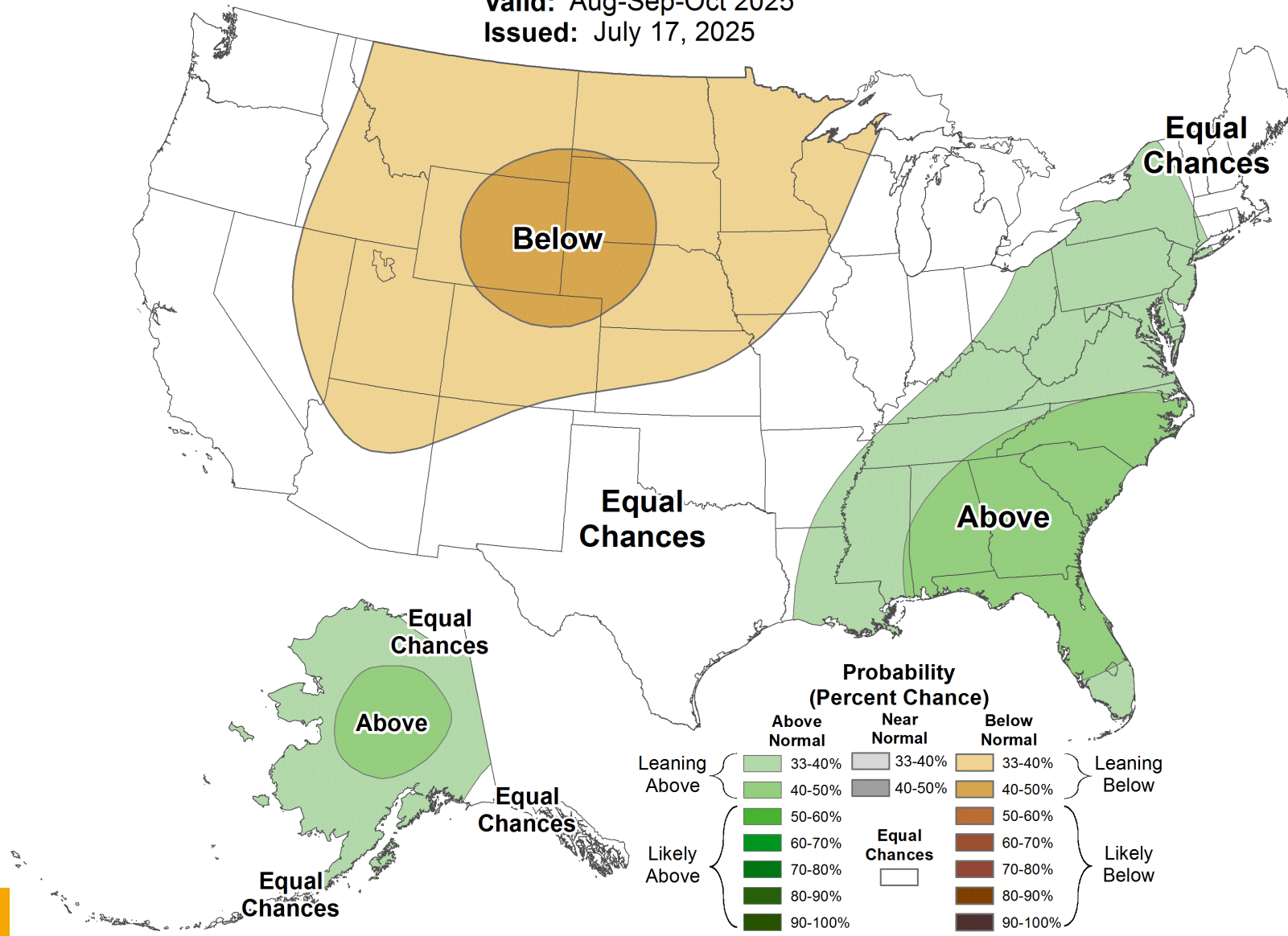


Seasonal Temperature Outlook



Valid: Aug-Sep-Oct 2025
Issued: July 17, 2025







Questions/Comments?

Contact Information:

Michael Downey
mdowney2@mt.gov
406-444-9748

UMRB Drought Indicators Website
[//drought.climate.umt.edu](http://drought.climate.umt.edu)

