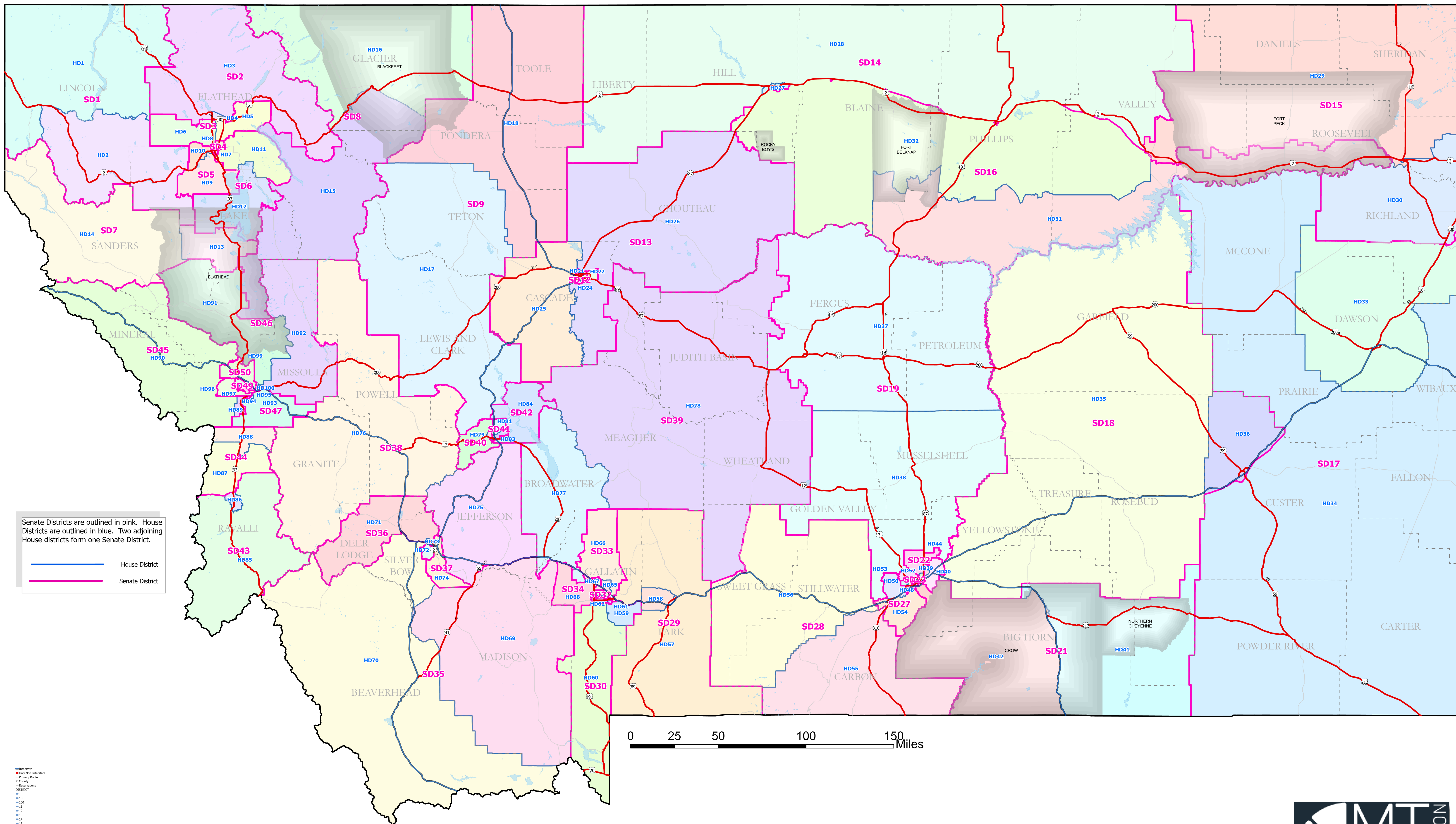


State Legislative Election Districts for Years 2024 - 2032



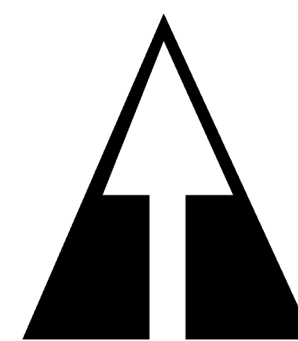
Senate Districts are outlined in pink. House Districts are outlined in blue. Two adjoining House districts form one Senate District.

House District

Senate District

0 25 50 100 150 Miles

- 1
- 2
- 3
- 4
- 5
- 6
- 7
- 8
- 9
- 10
- 11
- 12
- 13
- 14
- 15
- 16
- 17
- 18
- 19
- 20
- 21
- 22
- 23
- 24
- 25
- 26
- 27
- 28
- 29
- 30
- 31
- 32



Map Date: 02.23.2023
Data Sources: Base Layers, Montana State Library (MSL), ESRI; Election District Boundaries, Montana Districting & Reapportionment Commission;

