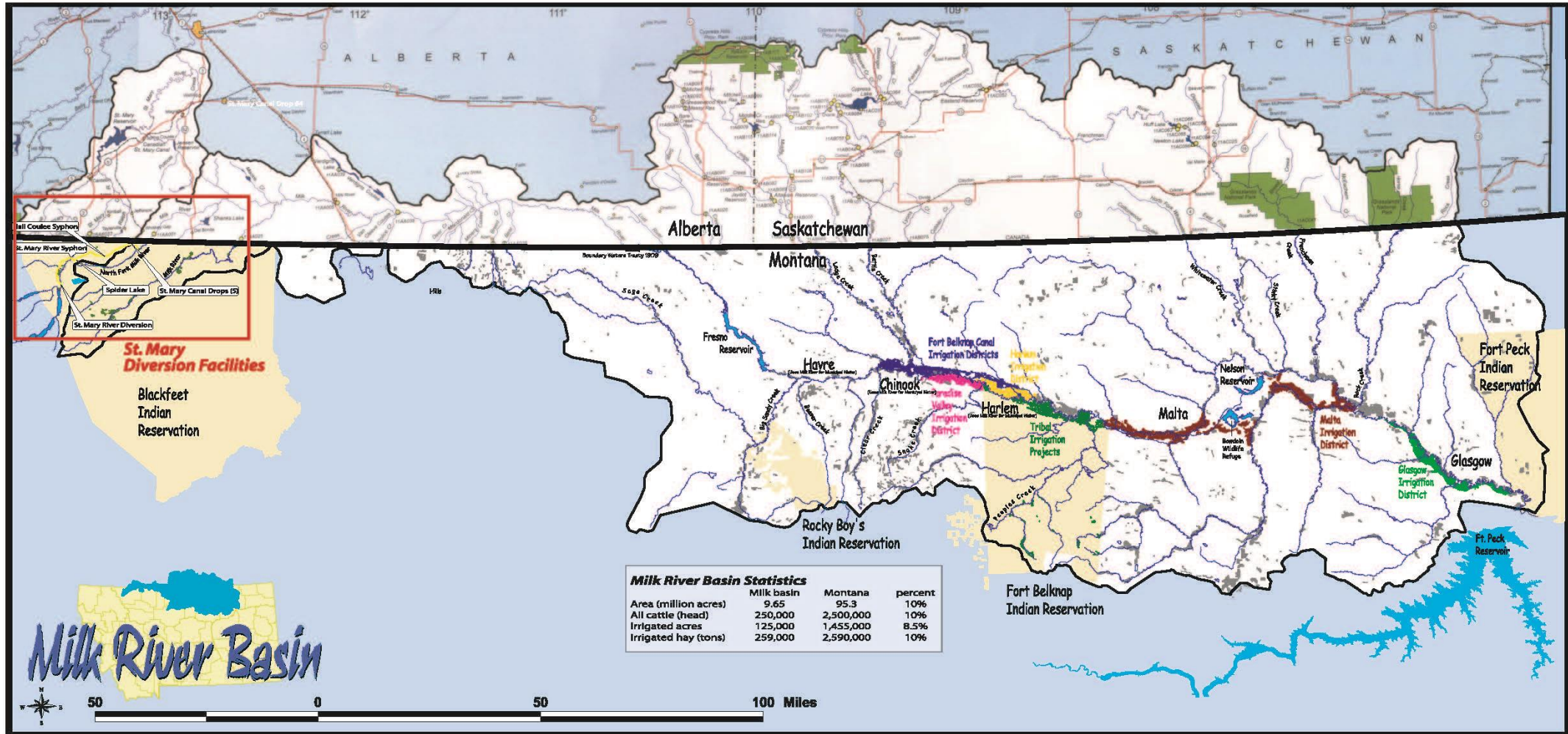




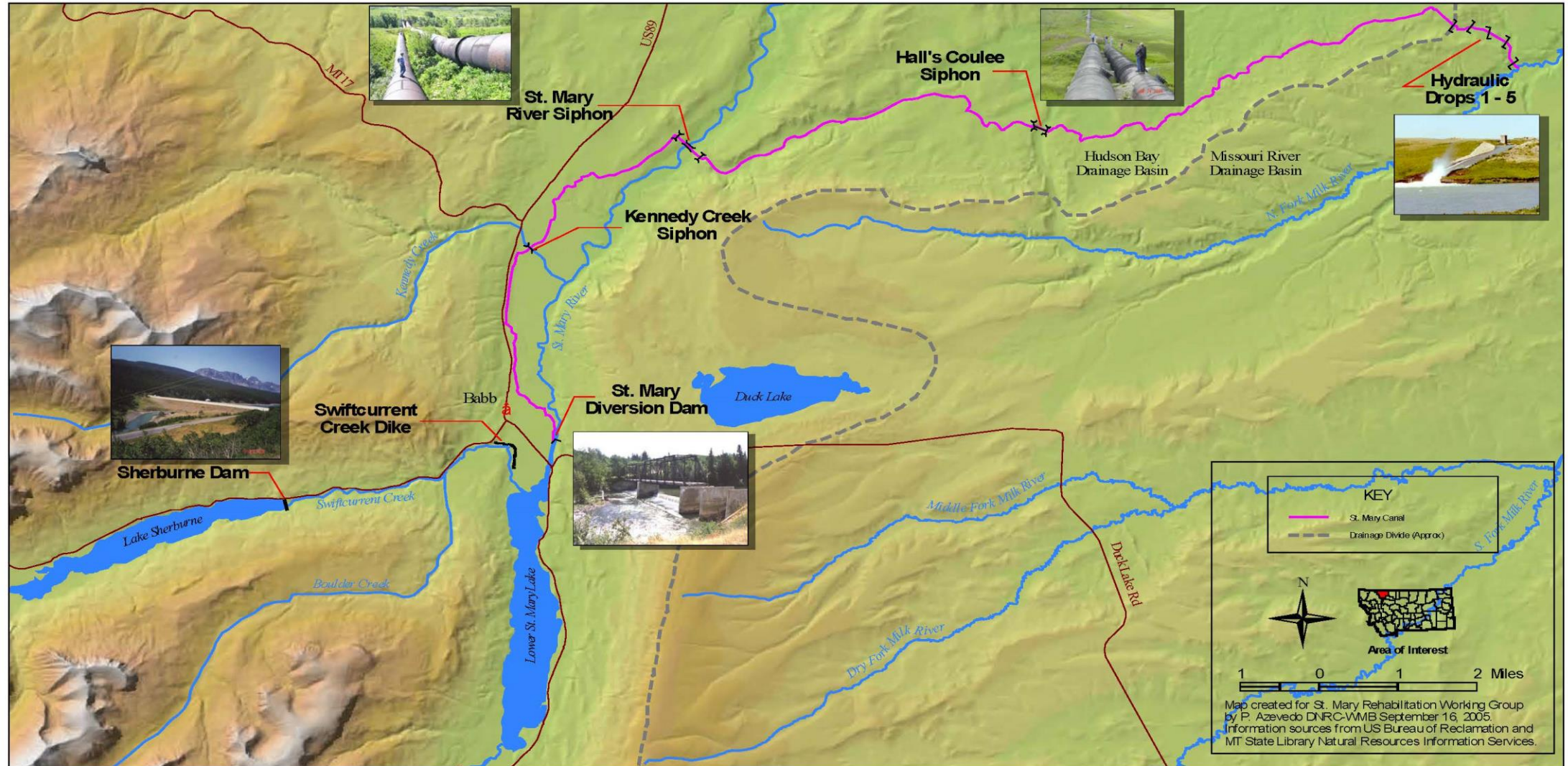
St Mary Diversion Works Failure of Drop 5

Life Line of the HiLine



St. Mary Diversion and Conveyance Facilities

Glacier County, Montana



Drop 5 prior to failure



A 2014 photograph of the Drop 5 structure



Drop 5 post failure



1 HOUSE BILL NO. 540

2 INTRODUCED BY DICKENSON, GALVIN-HALCRO, SESSO, NOONAN, CALLAHAN, SMITH, CAMPBELL,

3 GILLAN, COHENOUR, JACOBSON, LINDEEN, EATON, HARRINGTON, SCHMIDT, BECKER,

4 MUSGROVE, TESTER, RASER, GOLIE, MCALPIN, WILSON, DOWELL, TOOLE, GROESBECK, GRINDE,

5 BRANAE, FRANKLIN, CROMLEY, CAFERRO, VILLA, KITZENBERG, LASLOVICH, LARSON, WISEMAN,

6 FUREY, GALLUS, KEANE, STAHL, MILBURN, HAMILTON, RYAN, HINER, MOSS, SMALL-EASTMAN,

7 MANGAN

8

9 A BILL FOR AN ACT ENTITLED: "AN ACT AUTHORIZING THE CREATION OF STATE DEBT THROUGH THE

10 ISSUANCE OF GENERAL OBLIGATION BONDS; APPROPRIATING THE PROCEEDS OF THE BONDS FOR

11 CAPITAL PROJECTS FOR COLLEGES OF TECHNOLOGY AND OTHER CAPITAL PROJECTS; PROVIDING

12 FOR MATTERS RELATING TO APPROPRIATIONS; AND PROVIDING AN IMMEDIATE EFFECTIVE DATE."

13

14 BE IT ENACTED BY THE LEGISLATURE OF THE STATE OF MONTANA:

15

16 NEW SECTION. Section 1. Definitions. For the purposes of [sections 1 through 6], unless otherwise

17 stated, the following definitions apply:

18 (1) "Capital project" means the acquisition of land or improvements or the planning, capital construction,

19 renovation, equipping, furnishing, or major repair projects authorized in [sections 1 through 6].

20 (2) "CPF" means the capital projects fund.

21

22 NEW SECTION. Section 2. Appropriation of bond proceeds. (1) The following money is

23 appropriated from the CPF from the proceeds for the bonds authorized by [section 3] to the ~~designated entity~~

24 ~~DEPARTMENT OF ADMINISTRATION~~ for the capital projects described in this section, contingent upon the

25 authorization of general obligation bonds by the 59th legislature and the sale of bonds by the board of

26 examiners:

27 Agency/Project

28 DEPARTMENT OF COMMERCE

29 GREAT PLAINS DINOSAUR PARK \$500,000

30 MONTANA HISTORICAL SOCIETY

1 MONTANA HISTORICAL SOCIETY BUILDING \$7,500,000

2 MONTANA UNIVERSITIES AND COLLEGES

3 Montana State University

4 Great Falls College of Technology \$16,500,000 11,000,000

5 Billings College of Technology 9,500,000 9,000,000

6 University of Montana

7 Helena College of Technology 7,500,000

8 Montana Tech of the University of Montana

9 Petroleum Building 7,000,000 9,000,000

10 GAINES HALL RENOVATION, PHASE I 3,500,000

11 MSUAES PROJECTS 500,000

12 (2) THE FOLLOWING MONEY IS APPROPRIATED FROM THE CPF FROM THE PROCEEDS FOR THE BONDS

13 AUTHORIZED BY [SECTION 3] TO THE DEPARTMENT OF NATURAL RESOURCES AND CONSERVATION FOR THE CAPITAL

14 PROJECTS DESCRIBED IN THIS SECTION, CONTINGENT UPON THE AUTHORIZATION OF GENERAL OBLIGATION BONDS BY THE

15 59TH LEGISLATURE AND THE SALE OF BONDS BY THE BOARD OF EXAMINERS:

16 DEPARTMENT OF NATURAL RESOURCES AND CONSERVATION

17 St. Mary Water Project – State Support 10,000,000

18 State Cost Share – Fort Belknap Water Compact 9,500,000

19

20 NEW SECTION. Section 3. Authorization of bonds -- CONDITION. (1) The ~~SUBJECT TO SUBSECTION (2).~~

21 ~~THE~~ board of examiners is authorized to issue and sell general obligation bonds in an amount not exceeding ~~\$60~~

22 ~~\$67.5~~ \$68 million for the capital projects described in [section 2] over and above the amount of general obligation

23 bonds outstanding on January 1, 2005. The bonds must be issued in accordance with the terms and in the

24 manner required by Title 17, chapter 5, part 8. The authority granted to the board by this section is in addition

25 to any other authorization to the board to issue and sell general obligation bonds.

26 (2) THE SALE OF BONDS AND THE APPROPRIATION IN [SECTION 2] OF BOND PROCEEDS FOR THE ST. MARY WATER

27 PROJECT ARE CONTINGENT UPON THE RECEIPT OF THE FEDERAL COST-SHARE FOR THE PROJECT.

28

29 NEW SECTION. Section 4. Planning and design. The department of administration ~~AND DEPARTMENT~~

30 ~~OF NATURAL RESOURCES AND CONSERVATION~~ may proceed with the planning and design of capital projects prior

Major Decisions:

- Milk River Joint Board of Control will be the Contracting Agent and will direct the engineering and contracting.
- HDR Engineering has been and remains the consulting firm employed by the Joint Board of Control that will provide design and contract oversight.
- Sletten Construction has been selected as the contractor and is mobilizing now.

Federal Cost Share

- Operation, Maintenance, and Replacement
 - Federal Share = 26.04%
 - Irrigation Districts = 73.96%
- Public Law 111-11
 - Federal Share = 35%
 - Irrigation Districts = 65%
- Public Law 111-11 **Qualified, Emergency, Extraordinary Maintenance**
 - Federal Share = 51.93%
 - Irrigation Districts = 48.07%
- (Allows the OM&R rate to be applied to the 65% federal share in PL111-11)

Federal Cost Share Assuming an \$8 Million Project

- Federal Share = 51.93% \$4,154,400
- Irrigation Districts = 48.07% \$3,845,600

