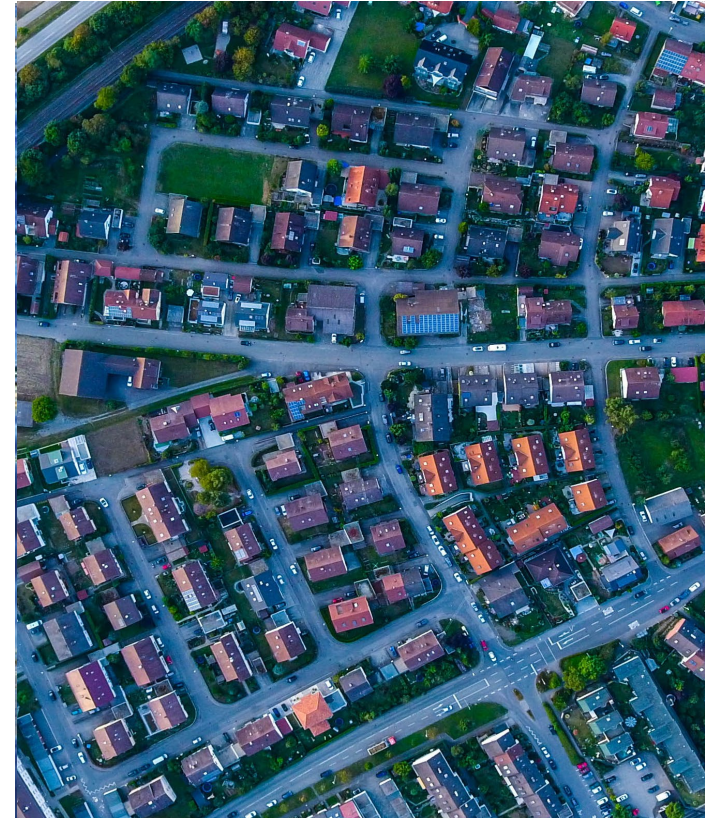


# Adjudication Update



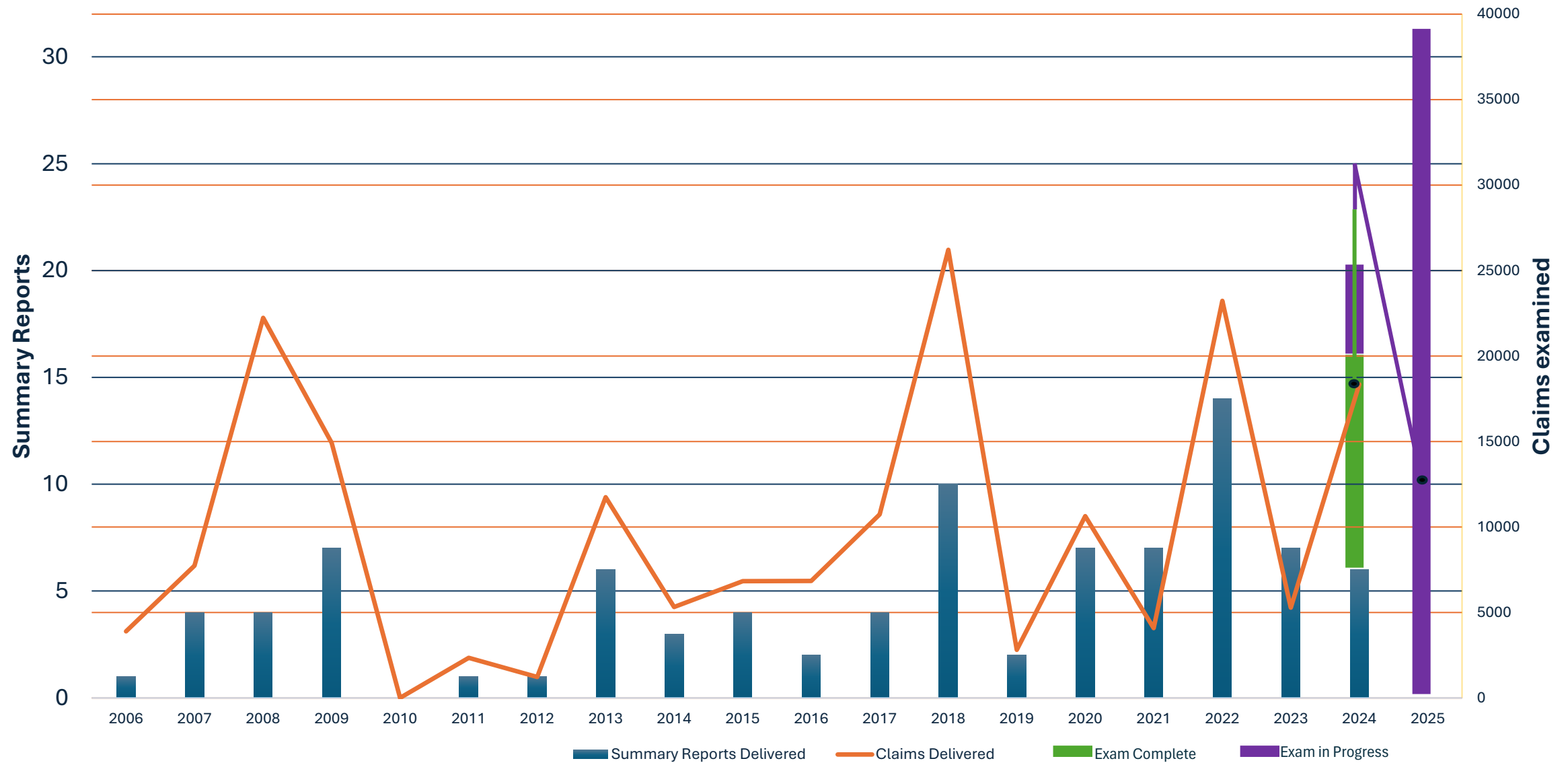
## Current Status of Benchmarks (85-2-271)

Claims examined (benchmarks)	Years	Time (Years)	Total Claims/Benchmark	Total Claims/Year	Claims Delivered in Summary Reports	Ahead of Benchmarks
10,000	2015-2017	2	10,000	<b>5,000</b>	16,617	6,617
30,000	2017-2019	2	20,000	<b>10,000</b>	49,848	19,848
65,000	2019-2022	3	35,000	<b>11,667</b>	78,938	13,938
85,000	2022-2023	1	20,000	<b>20,000</b>	89,752	4,752
95,000	2023-2024	1	10,000	<b>10,000</b>	108,017	13,017
130,630	2024-2025	1	35,630	<b>35,630</b>	108,033	<b>(22,597)</b>

# Summary Reports and Claims Examined

Year (primary work)	Average Summary Reports Delivered/Year	Average Claims Delivered/Year
2006-2016 (Full Exam )	3	7,554
2017-2019 (Reexamination Primary)	5	13,254
2020-2023 (Reexamination & HB110, SB355 examination)	9	10,805
<b>2024 (Delivered/Scheduled)</b>	<b>6 / 20</b>	<b>18,346 / 31,699</b>

# Summary Reports and Claims Examined



## Update on Water Court Database Requests

- 6 interface requests – Contractor is working through them, can't be priority until after FRWMB. DNRC still providing all need reports as requested until built.
- Distribution request – WC and DNRC to meet this Fall/Winter to discuss Distribution overhaul. Original meeting postponed by WC, next meeting is scheduled for October 1st.
- FileNet/Scanned Documents – DNRC has a meeting with SITSD on Sept. 16<sup>th</sup> to go over work request. All items requested by WC and stakeholders will be discussed.

# Summary Report Delivery Schedule (2024-25)

Basin	Decree Type	~Total Claims	Reexam Complete	Exam Complete	Summary Delivery
41C	Preliminary	2902	May-24	May-24	Sep-24
76J	Interlocutory	3		May-24	Sep-24
76I	Preliminary	211	May-24	May-24	Sep-24
41O	Interlocutory	278		May-24	Sep-24
41A	Interlocutory	850		Jun-24	Oct-24
41B	Interlocutory	698		Jul-24	Oct-24
42K	Preliminary	1499	Jun-24	Jul-24	Oct-24
76HE	Preliminary	1681		Jun-24	Nov-24
76HB	Preliminary	1448		Jun-24	Nov-24
76HA	Interlocutory	460		Jul-24	Nov-24
76HF	Interlocutory	130		Aug-24	Nov-24
43C	Preliminary	2156	Sep-24	Aug-24	Dec-24
41QJ	Interlocutory	580		Aug-24	Dec-24
42KJ	Interlocutory	457		Sep-24	Dec-24
40EJ	Interlocutory	351		Sep-24	Dec-24

Basin	Decree Type	~Total Claims	Reexam Complete	Exam Complete	Summary Delivery
43BJ	Preliminary	884	Oct-24	Aug-24	Jan-25
40I	Interlocutory	15		Sep-24	Jan-25
40J	Interlocutory	618		Oct-24	Jan-25
40M	Interlocutory	509		Oct-24	Jan-25
76K	Preliminary	637	Oct-24		Feb-25
76C	Preliminary	273	Nov-24		Feb-25
76B	Preliminary	115	Nov-24		Feb-25
40A	Interlocutory	1113		Nov-24	Mar-25
40C	Interlocutory	369		Dec-24	Mar-25
40B	Interlocutory	366		Dec-24	Apr-25
41H	Interlocutory	744		Jan-25	Apr-25
41D	Interlocutory	628		Jan-25	May-25
76E	Interlocutory	64		Jan-25	May-25
40L	Interlocutory	151		Jan-25	May-25
41G	Interlocutory	733		Feb-25	May-25
41P	Interlocutory	156		Feb-25	May-25
41R	Interlocutory	175		Feb-25	May-25
43A	Interlocutory	396		Feb-25	Jun-25
76F	Interlocutory	459		Mar-25	Jun-25
43B	Interlocutory	815		Mar-25	Jul-25
76GJ	Interlocutory	201		Mar-25	Jul-25
43Q	Interlocutory	800		Apr-25	Jul-25
41T	Interlocutory	284		Apr-25	Jul-25
43D	Interlocutory	728		May-25	Aug-25
39H	Interlocutory	4		May-25	Aug-25
42I	Interlocutory	39		May-25	Aug-25
42L	Interlocutory	194		May-25	Aug-25
38H	Interlocutory	19		May-25	Aug-25
42J	Interlocutory	143		May-25	Aug-25
40P	Interlocutory	115		May-25	Aug-25