

**DNRC REPORT TO EQC
HB22 ADJUDICATION PROGRESS
June 28, 2007**

Claims Examination Progress

- First benchmark: 8,000 claims by 12-31-2006
 - **Second benchmark: 19,000 claims by 12-31-2008**

 - Current Claims examined: **18,689** thru **May 30, 2007**
 - Current Claims examined by Purpose
 - o Irrigation 3,960 21%
 - o Stock 11,362 60%
 - o Domestic 2,019 11%
 - o Other 1,348 8%
- 18,689**

Claims remaining to be examined 38,311

Total Claims examined based on original remaining 57,000 claims

$(57,000 - 38,311) = *18,689$

**1470 claims were examined prior to enactment of HB22*

Summary Reports to the Water Court

- Union Creek Summary Report sent May 19, 2005
- Teton Summary Report was sent August 15, 2005
- Big Hole River Summary Report was sent October 31, 2006

Decrees

- Teton Basin Decree - Water Court issued on December 29, 2005
 - o 2,500 claim files
- Union Creek Decree - Water Court Issued on March 10, 2006
 - o 42 claim files in Certified Case
- **Big Hole River Decree – Water Court issued on April 6, 2007**
 - o **3892 claim files**
- These decrees and claim records are scanned and viewable on the DNRC website

Basin Status

<u>Active Basins</u>	<u>Estimated Completion</u>
-Lower Tongue R (42C)	Summary report preparation July 2007
-Missouri R to Sun R (41QJ)	Summary report preparation July 2007
-Smith River (41J)	Summary report preparation Aug 2007
-Blackfoot River (76F)	Summary report preparation Aug 2007
-Two Medicine (41M)	Summary report preparation June 2008
-Beaver Creek trib to Milk R (40M)	Summary report preparation June 2008
-Pryor Creek (43E)	Summary report preparation July 2008
-Little Big Horn River (43O)	Summary prep pending July 2009
-Big Horn R below Greybull R (43P)	Summary prep pending July 2009
-St. Mary River (40T)	Summary prep pending July 2009

Updated information in bold.

-Milk River above Fresno (40F)	Summary prep pending	July	2009
-Peoples Creek (40I)	Summary prep pending	July	2009
-Milk River between Fresno & Whitewater (40J)	Summary prep pending	July	2009
-Beaver Creek (40M)	Summary prep pending	July	2009
-Cut Bank River (41L)	Summary prep pending	July	2009
-Two Medicine River (41M)	Summary prep pending	July	2009
-Upper Tongue R (42B)	Examination in progress	Aug	2007
-Jocko River only (76L)	Examination in progress	Dec	2007
-Flatwillow Creek (40B)	Examination in progress	July	2008
-Rosebud Creek (42A)	Examination in progress	July	2009
-Missouri R to Marias (41Q)	Examination in progress	July	2009
-Big Muddy Creek (40R)	Examination in progress	July	2009
-Beaverhead River (41B)	Examination in progress	July	2009
-Red Rock River (41A)	Examination in progress	July	2015
-Flathead River (76LJ)	Examination in progress	July	2015
-Bitterroot R, E side (76HA)	Examination in progress	July	2015
-Marias River (41P)	Examination in progress	July	2015
-Flathead R below Flathead Lake (76L)	Examination in progress	July	2015
-Missouri River (41T) from Marias to Bullwacker	To be Examined	July	2012
-Shoshone River (43N)	To be Examined	July	2012
-Missouri River (40EJ) between Bullwacker & Musselshell	To be Examined	July	2015
-Arrow Creek (41R)	To be Examined	July	2015
-Yellowstone River (42M) below Powder River	To be Examined	July	2015

District Court Enforcement Actions

- Completed water court assistance producing water commissioner indexes
 - o 2005 on 23 streams
 - o 2006 on 23 streams
 - o **2007 on 26 streams**
- **Water Right Database Automated indexes are now in use**

Expenses

FY06: Operating costs	\$ 639,320
Personnel services	<u>\$1,382,274</u>
	Expenditures \$2,021,595
	Budget \$2,037,740
FY07: Operating Costs	\$212,042
Personnel services	<u>\$1,513,704</u>
	Expenditures \$1,725,746
	Budget \$2,106,845

Adjudication Fee

- 108,000 bills mailed Dec. 27, 2005
- 18,552 2nd bills mailed March 1, 2006
- Estimated revenue generated \$6.2 million
- Revenue received to date: \$5.067 million representing **93,737** invoices paid

Appeals

- 4,997 Appeals received to date
 - o 3,076 appeals based on ownership;
 - o 1,911 appeals based on fee calculation
- **652 appeals have been resolved to date**
 - o **36 denied**
 - o **616 resolved with fee correction**
- **Remaining 4345 appeals to be resolved by Nov. 2008**
- **Collections: Meeting to be scheduled with DOR Collections by Aug. 2007**

Ownership Records / Forms Received

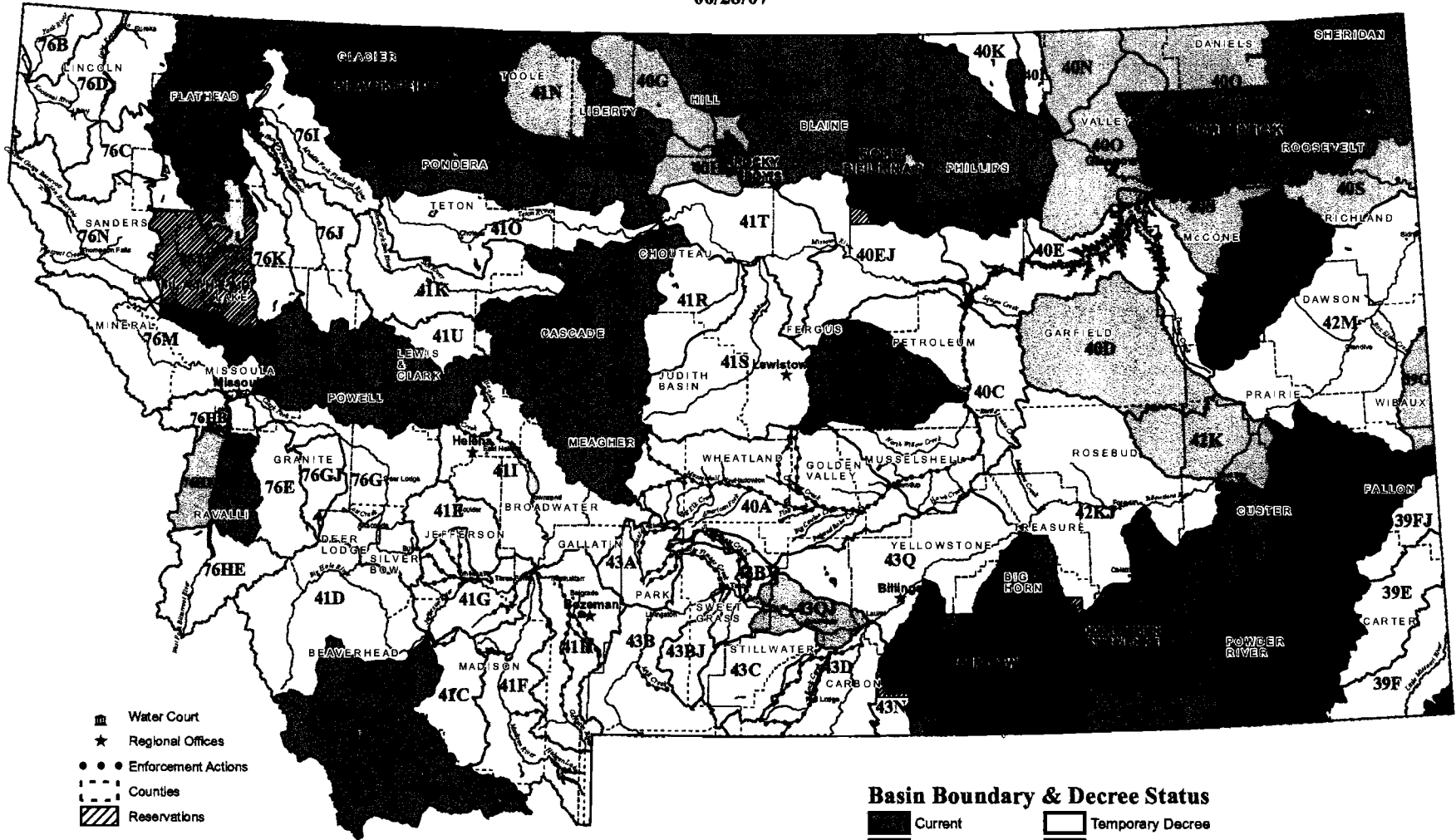
- **90,990** addresses corrected and/or added, though ownership updates (Form 608) since July, 2005
- **16,426** work hrs. dedicated to owner/address cleanup since July 2005
- **HB 39 Automate Ownership Updates effective July 1, 2008**
 - o **Redesign of DOR Realty Transfer Certificate, water right disclosure section in July 2007**
 - o **Purchase software for matching property geocodes with water right parcels in July. Match and upload geocodes to water right database by Dec 2007.**
 - o **DOR Orion property records system updated with water right fields by Jan 2008**
 - o **Public and realty industry education on HB 39 and new process Aug 2007 thru June 2008**

Database Progress

- **Moved Water Right Database to ITSD in May 2007.**
- **Final contract in progress for development of Reserved Water Right Compact water right records, automating annual reporting and implementing subordination provisions. Completion date - November 2007.**

Basin Location and Adjudication Status

06/28/07



- Water Court
- Regional Offices
- Enforcement Actions
- Counties
- Reservations

- Basin Boundary & Decree Status**
- Current
 - Not Yet Examined
 - Preliminary Decree
 - Temporary Decree
 - Final Decree

**DNRC REPORT TO EQC
HB22 ADJUDICATION PROGRESS
August 28, 2007**

Claims Examination Progress

- First benchmark 8,000 claims by 12-31-2006
 - **Second benchmark 19,000 claims by 12-31-2008**
 - Claims examined July 2005 thru **July 2007** **20,204**
 - Claims examined by Purpose
 - o Irrigation 4,583 23%
 - o Stock 11,942 59%
 - o Domestic 2,179 11%
 - o Other 1,500 7%
- 20,204**

Claims remaining to be examined **36,796**

Total Claims examined based on original
remaining 57,000 claims (57,000 – 36,796) = ***20204**

*1470 claims were examined prior to enactment of HB22

Summary Reports to Water Court

Union Creek	May 19, 2005
Teton River (41O)	August 15, 2005
Big Hole River (41D)	October 31, 2006
Tongue River, below Hanging Woman Creek (42C)	August 7, 2007
Blackfoot River (76F)	August 14, 2007
Missouri River, from Holter Dam to Sun River (41QJ)	August 15, 2007

Decrees Issued by Water Court

Teton Basin Decree	December 29, 2005	2,500 claims
Union Creek Decree	March 10, 2006	42 claims
Big Hole River Decree	April 6, 2007	3,892 claims

Above decrees scanned and available at: <http://nris.state.mt.us/dnrc/waterrights/default.aspx>

Basin Status

<u>Active Basins</u>	<u>Estimated Completion</u>
-Smith River (41J)	Summary report preparation Sept 2007
-Pryor Creek (43E)	Summary report preparation July 2008
-Milk River between Fresno & Whitewater (40J)	Summary prep pending July 2009
-Peoples Creek (40I)	Summary prep pending Dec 2009

-Little Big Horn River (43O)	Summary prep pending	July	2010
-Big Horn R below Greybull R (43P)	Summary prep pending	July	2010
-Beaver Creek (40M)	Summary prep pending	July	2010
-Milk River above Fresno (40F)	Summary prep pending	July	2011
-St. Mary River (40T)	Summary prep pending	July	2012
-Cut Bank River (41L)	Summary prep pending	July	2012
-Two Medicine River (41M)	Summary prep pending	July	2012
-Upper Tongue R (42B)	Examination in progress	Dec	2007
-Flatwillow Creek (40B)	Examination in progress	July	2008
-Rosebud Creek (42A)	Examination in progress	July	2008
-Missouri R to Marias (41Q)	Examination in progress	July	2009
-Big Muddy Creek (40R)	Examination in progress	July	2009
-Beaverhead River (41B)	Examination in progress	July	2009
-Missouri R from Marias to Bullwacker (41T)	Examination in progress	July	2012
-Red Rock River (41A)	Examination in progress	July	2015
-Flathead River (76LJ)	Examination in progress	July	2015
-Bitterroot R, E side (76HA)	Examination in progress	July	2015
-Marias River (41P)	Examination in progress	July	2015
-Flathead R below Flathead Lake (76L)	Examination in progress	July	2015
-Shoshone River (43N)	To be Examined	July	2012
-Missouri R between Bullwacker and Musselshell (40EJ)	To be Examined	July	2015
-Arrow Creek (41R)	To be Examined	July	2015
-Yellowstone R below Powder R (42M)	To be Examined	July	2015

District Court Enforcement Actions

- Completed water court assistance on 23 streams 2005 season
- Completed water court assistance on 23 streams 2006 season
- Completed water court assistance on 26 streams 2007 season
- **Automated indexes are now in use**

Expenses

For FY06:	Operating costs	\$ 639,320
	Personnel services	<u>\$1,382,274</u>
	Total	\$2,021,595
	Budget	\$2,037,740
For FY07:	Operating Costs	\$ 284,997.00
	Personnel services	<u>\$1,708,759.00</u>
	Total	\$1,993,756.00
	Budget	\$2,106,845.00
For FY08:	Operating Costs	\$ 27,930.00
	Personnel services	<u>\$ 102,716.00</u>
	Total	\$ 130,646.00
	Budget	\$2,506,301.00

Billing System

- 108,000 bills mailed Dec. 27, 2005
- 18,552 2nd bills mailed March 1, 2006
- Estimated revenue generated \$6.2 million
- Revenue received **\$5.123 million** representing 93,737 invoices paid (in full /or part)

Appeals

- 4,997 Appeals received to date
 - o 3,076 appeals based on ownership;
 - o 1,911 appeals based on fee calculation
- **834 appeals have been resolved to date (36 denied, 798 resolved with fee correction)**

Ownership Records / Forms Received

- **91,716** addresses corrected and/or added, though ownership updates (16,686 hrs) since July, 2005

(Form 608) Ownership Updates
(Form 602) Notices of Completion of Groundwater Development (wells 35gpm or less)

Fiscal Year	608 Counts	602 Counts
2008	742	492
2007	6074	3523
2006	13998	5948
2005	5414	3453
2004	4780	3053

- **HB 39 Automate Ownership Updates effective July 1, 2008**
 - o **Redesign of DOR Realty Transfer Certificate completed August 2007**
 - o Purchase software for matching property geocodes with water right parcels in July. Match and upload geocodes to water right database by Dec 2007.
 - o DOR Orion property records system updated with water right fields by Jan 2008
 - o Public and realty industry education on HB 39 and new process Aug 2007 thru June 2008

Database Progress

- Moved Water Right Database to ITSD in May 2007.
- **Automated water court objection list (120 hours) August 2007**
- Final contract in progress for development of Reserved Water Right Compact water right records, automating annual reporting and implementing subordination provisions. Completion date - November 2007.

Montana General Adjudication Basin Status														Thru Aug 1, 2007			
Basin #	Basin Name	Cost	Water Master/ Clerk	Date Temporary Issued	Date Preliminary Issued	Date Final Issued	Date Objection Deadline	Date Extended Deadline	Counter Objection Notice Mailed	Counter Objection Deadline	Objection list Mailed	Deadline Notice of Appearance	Total Claims	Total Unexamined Claims	Decreed Claims to Date	Verified Claims	
	Northern Cheyenne Compact		BL/AB		19-Jan-94		18-Jul-94						1		1		
	Fort Peck Compact		BL/AB		6-Apr-94		3-Oct-94						1		1		
	National Park Service Compact		BL/AB		10-Dec-96		9-Jun-97						1		1		
	Rocky Boy's Compact		BL/AB		27-Apr-00		24-Oct-00						1		1		
	US F&WS Benton Lake Compact		BL/AB		5-Apr-01		2-Oct-01						1		1		
	US F&WS Red Rock Lakes Compact		BL/AB		10-May-02		6-Nov-02						1		1		
	US F&WS Black Coulee Compact		BL/AB		31-Oct-02		28-Apr-03						1		1		
FINAL DECREES																	
1	42I	Little Powder River	\$ 65.00			7-May-81	31-May-83						2281	0	2281	yes	
2	42J	Powder River	\$ 65.00			7-May-81	31-May-83						8934	0	8934	yes	
3	40P	Redwater River	\$ 35.00			6-Jan-84	22-May-85	9-Mar-84	23-Apr-84		21-May-84	26-Jul-84	1940	0	1940	yes	
4	38H	Belle Fourche River above Cheyenne	\$ 20.00			2-Nov-83	27-Mar-84	3-Feb-84					210	0	210	yes	
5	39H	Little Missouri below Little Beaver	\$ 20.00			2-Nov-83	27-Mar-84	3-Feb-84					203	0	203	yes	
6	42L	O'Fallon Creek	\$ 55.00			7-Feb-84	17-Apr-85	10-May-84	25-Jun-84		25-Jul-84	28-Aug-84	2786	0	2786	yes	
PRELIMINARY DECREES														SUBTOTAL	16354	0	16354
1	40G	Sage Creek	\$ 20.00	KL/AB		20-Dec-83		23-Mar-84	13-Apr-84		2-May-84	7-Jun-84	943	0	943	yes	
2	41N	Willow Creek	\$ 25.00	KL/AB		6-Jul-84		9-Oct-84			31-Oct-84	5-Dec-84	1489	0	1489	yes	
3	40D	Big Dry Creek	\$ 55.00	KL/AB		28-Sep-84		4-Jan-85			14-Feb-85	29-Mar-85	2985	0	2985	yes	
4	39G	Beaver Creek	\$ 20.00	KL/AB		31-Jan-85		10-May-85			19-Jun-85	22-Jul-85	708	0	708	yes	
5	43QJ	Yell R from Bridger to Clarks Fork Ye	\$ 20.00	KL/AB		23-Jul-85		21-Oct-85	3-Feb-86		21-Mar-86	21-Apr-86	1088	0	1088	yes	
6	40N	Rock Creek	\$ 30.00	BL/AB		13-Aug-85		18-Nov-85			27-Feb-86	31-Mar-86	1520	0	1520	yes	
7	42K	Yellowstone River between Tongue &	\$ 30.00	KL/AB		19-Sep-85		18-Nov-85	18-Mar-86		2-May-86	2-Jun-86	1479	0	1479	yes	
8	40O	Milk River below Whitewater including	\$ 280.00	MG/		24-May-95		20-Nov-95	16-May-96	14-Nov-97	13-Jan-98	4-Feb-98	3403	97	3306		
9	76HF	Westside Subbasin Bitterroot River	\$ 365.00	DR/SK		14-Jan-98		13-Jul-98	13-Oct-98	10-May-99	9-Jul-99	25-Aug-99	3774	0	3774		
10	40S	Missouri River below Fort Peck Dam	\$ 265.00	HM/JR		29-Dec-99		26-Jun-00	25-Aug-00	2-Jan-01	5-Mar-01	10-Apr-01	2966	14	2966		
11	40Q	Poplar River	\$ 170.00	HM/JR		29-Dec-99		26-Jun-00	25-Sep-00	2-Jan-01	5-Mar-01	10-Apr-01	2080	0	2080		
12	40H	Big Sandy Creek	\$ 85.00	CC/PG		22-Jan-03		21-Jul-03	17-Oct-03	11-Dec-03	9-Feb-04		827	30	797		
TEMPORARY PRELIMINARY DECREES														SUBTOTAL	23262	141	23135
1	76N	Lower Clark Fork	\$ 25.00	KL/AB	28-Feb-84			4-Jun-84	3-Aug-84		30-Aug-84	5-Oct-84	1245	0	1245	yes	
2	76C	Fisher River	\$ 20.00	KL/AB	28-Feb-84			4-Jun-84	3-Aug-84		30-Aug-84	5-Oct-84	245	0	245	yes	
3	76D	Kootenai River	\$ 25.00	KL/AB	22-Mar-84			26-Jun-84	10-Aug-84		30-Aug-84	5-Oct-84	1462	0	1462	yes	
4	76B	Yaak River	\$ 20.00	KL/AB	22-Mar-84			26-Jun-84	10-Aug-84		30-Aug-84	5-Oct-84	104	0	104	yes	

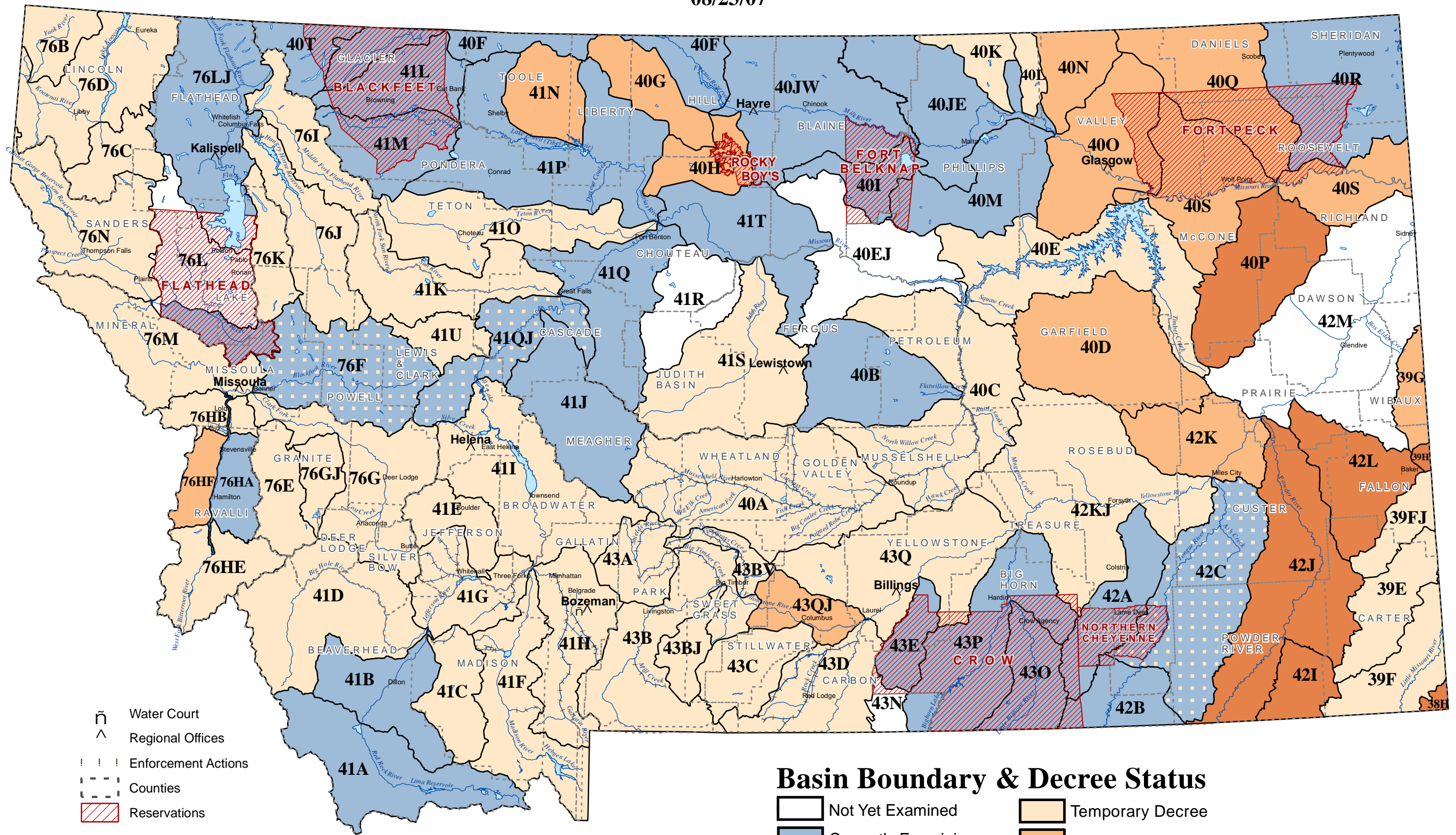
5	76GJ	Flint Creek	\$ 20.00	KL/AB	29-Mar-84			3-Jul-84	3-Sep-84			21-Nov-84	31-Dec-84	1050	0	1050	yes	
6	76E	Rock Creek	\$ 20.00	KL/AB	29-Mar-84			3-Jul-84	20-Aug-84			18-Oct-84	23-Nov-84	719	0	719	yes	
7	41U	Dearborn River	\$ 30.00	KL/AB	10-May-84			9-Aug-84	24-Aug-84			27-Sep-84	2-Nov-84	876	0	876	yes	
8	41S	Judith River	\$ 90.00	KL/PG	17-May-84			21-Aug-84	4-Oct-84			13-Nov-84	19-Dec-84	5268	0	5268	yes	
9	41F	Madison River	\$ 55.00	KL/AB	25-Jul-84			29-Oct-84	29-Nov-84			14-Feb-85	29-Mar-85	2842	10	2832	yes	
10	76K	Swan River	\$ 20.00	KL/AB	9-Aug-84			13-Nov-84				28-Dec-84	1-Feb-85	573	0	573	yes	
11	76I	Middle Fork Flathead River	\$ 20.00	BL/AB	9-Aug-84			13-Nov-84				28-Dec-84	1-Feb-85	199	17	182	yes	
12	76J	South Fork Flathead River	\$ 20.00	BL/AB	9-Aug-84			13-Nov-84				28-Dec-84	1-Feb-85	130	0	130	yes	
13	76M	Middle Clark Fork River	\$ 50.00	KL/AB	29-Nov-84			5-Mar-85	3-Jun-85			3-Oct-85	7-Nov-85	2587	7	2580	yes	
14	43BV	Sweet Grass Creek	\$ 20.00	KL/PG	19-Dec-84			26-Mar-85	10-May-85			15-Jul-85	14-Aug-85	826	0	826	yes	
15	43B	Yellowstone River above & incl Bridge	\$ 80.00	KL/PG	16-Jan-85			23-Apr-85	22-Jul-85			3-Mar-86	4-Apr-86	4890	30	4860	yes	
16	40L	Frenchman Creek	\$ 20.00	KL/AB	16-Jan-85			23-Apr-85				12-Jul-85	16-Jul-85	418	0	418	yes	
17	39FJ	Little Beaver Creek	\$ 20.00	KL/AB	31-Jan-85			10-May-85				19-Jun-85	22-Jul-85	984	0	984	yes	
18	39F	Little Missouri above Little Beaver Cre	\$ 50.00	KL/AB	1-Feb-85			10-May-85				14-Aug-85	13-Sep-85	2993	0	2993	yes	
19	39E	Box Elder Creek	\$ 45.00	KL/AB	1-Feb-85			10-May-85				1-Aug-85	3-Sep-85	2474	1	2473	yes	
20	40E	Missouri R. between Muss & Fort Pec	\$ 50.00	BL/AB	7-Mar-85			7-Jun-85	8-Jul-85			16-Oct-85	22-Nov-85	3010	0	3010	yes	
21	43BJ	Boulder River tributary of Yellowstone	\$ 20.00	KL/PG	3-Apr-85			3-Jul-85	3-Sep-85			6-Nov-85	11-Dec-85	826	0	826	yes	
22	40A	Musselshell River	\$ 100.00	KL/PG	7-May-85			6-Jul-85	1-Nov-85			8-Apr-86	5-May-86	5812	0	5812	yes	
23	41K	Sun River	\$ 50.00	DR/PG	14-May-85			13-Aug-85	13-Jan-86			11-Nov-88	15-Dec-88	2856	0	2856	yes	
24	76G	Clark Fork River above Blackfoot Riv	\$ 80.00	DR/SK	17-May-85			15-Aug-85	17-Dec-85			23-Mar-88	22-Apr-88	4935	0	4935	yes	
25	41E	Boulder River tributary of Jefferson R	\$ 25.00	BL/AB	20-Jun-85			17-Sep-85	17-Dec-85			30-Sep-87	30-Oct-87	1249	0	1249	yes	
26	43C	Stillwater River	\$ 35.00	KL/AB	7-Nov-85			5-Feb-86	6-May-86			13-Jun-86	14-Jul-86	1743	0	1743	yes	
27	41H	Gallatin River	\$ 105.00	CC/PG	26-Sep-85			26-Dec-85	24-Jun-86			6-Aug-87	8-Sep-87	5756	11	5745	yes	
28	43A	Shields River	\$ 125.00	CC/PG	3-Aug-88			1-Nov-88	16-Mar-89			7-Nov-89	7-Dec-89	3395	0	3395	yes	
29	41G	Jefferson River	\$ 135.00	KL/AB	17-Oct-89			16-Apr-90	16-Jul-90			16-Apr-91	17-May-91	2474	67	2407	yes	
30	40K	Whitewater Creek	\$ 160.00	BL/AB	21-Nov-89			21-May-90	20-Aug-90			19-Dec-90	18-Jan-91	3967	378	3589	yes	
31	40C	Lower Musselshell River	\$ 185.00	CC/PG	6-Feb-90			6-Aug-90	5-Dec-90			17-Oct-91	18-Nov-91	3871	1	3870	yes	
32	41C	Ruby River	\$ 130.00	KL/AB	14-Nov-90			14-May-91	12-Aug-91			19-Apr-95	20-Jun-95	2201	18	2183		
33	76HB	North End Subbasin Bitterroot River	\$ 135.00	DR/SK	16-Sep-92			15-Mar-93	7-Sep-93			23-Mar-94	24-May-94	1164	3	1161		
34	43D	Clarks Fork Yellowstone River	\$ 275.00	KL/SK	9-Jun-93			6-Dec-93	1-Jun-94			24-Jan-95	31-Mar-95	2646	16	2630		
35	76HE	South End Subbasin Bitterroot River	\$ 145.00	DR/SK	25-May-94			21-Nov-94	21-Mar-95			22-Jun-95	22-Aug-95	1533	4	1529		
36	41I	Missouri R above Holter Dam	\$ 480.00	KL/PG	8-Mar-95			5-Sep-95	9-Jan-96			10-Jul-96	17-Sep-96	5237	69	5168		
37	43Q	Yell R between Clarks Fork Yell & Big	\$ 210.00	KL/PG	29-Dec-98			28-Jun-99	30-Aug-99	24-Nov-99	24-Jan-00	23-Feb-00	24-Apr-00	2473	0	2473		
38	42KJ	Yell R between Bighorn & Tongue Riv	\$520.00	JP/EE	14-Nov-03			12-May-04	8-Nov-04	27-Dec-04	25-Feb-05	20-Oct-05	19-Dec-05	4775	8	4767		
39	41O	Teton River	\$355.00	DR/EE	29-Dec-05			27-Jun-06	5-Dec-06	27-Mar-07	29-May-07			2524	0	2524		
40	76FA	Union Creek	\$58.00	HM/JR	3-Mar-06			6-Sep-06	5-Dec-06	3-Jan-07	5-Mar-07	13-Mar-07	14-May-07	42	0	42		
2	41D	Big Hole River	\$ 407.00	KL/PG	6-Apr-07			3-Oct-07						3892	0	3892		

													SUBTOTAL	96266	640	95626		
													TOTAL	UNEXAMINED		Total		
BASINS CURRENTLY BEING EXAMINED													CLAIMS	CLAIMS		Examined	%	
BILLINGS REGIONAL OFFICE																		
1	42A	Rosebud Creek											1201	259		942	78.4%	
2	42C	Tongue River below Hanging Woman											4689	-19		4708	100.4%	
3	43E	Pryor Creek											623	0		623	100.0%	
4	43O	Little Big Horn River											1197	0		1197	100.0%	
5	43P	Bighorn River below Greybull River											2132	57		2075	97.3%	
BOZEMAN REGIONAL OFFICE																		
1	41A	Red Rock River											2767	2179		588	21.3%	
GLASGOW REGIONAL OFFICE																		
1	40R	Big Muddy Creek											2006	711		1295	64.6%	
HAVRE REGIONAL OFFICE																		
1	40T	St. Mary River											181	6		175	96.7%	
2	40F	Milk River above Fresno											2323	7		2316	99.7%	
3	40I	Peoples Creek											670	46		624	93.1%	
4	40J	Milk River between Fresno Res & Whitewater											12856	37		12819	99.7%	
5	40M	Beaver Creek Tributary of Milk River											2923	18		2905	99.4%	
6	41L	Cut Bank River											647	0		647	100.0%	
7	41P	Marias River											3688	3168		520	14.1%	
8	41M	Two Medicine River											1110	41		1069	96.3%	
HELENA REGIONAL OFFICE																		
1	41B	Beaverhead River											2146	1373		773	36.0%	
KALISPELL REGIONAL OFFICE																		
1	76LJ	Flathead River including Flathead Lake											5275	5218		57	1.1%	
LEWISTOWN REGIONAL OFFICE																		
1	40B	Flatwillow Creek											3633	83		3550	97.7%	
MISSOULA REGIONAL OFFICE																		
1	76HA	Bitterroot River, East side											2837	2109		728	25.7%	
2	76L	Flathead River below Flathead Lake											3068	2884		184	6.0%	
SWAT TEAMS																		
1	41J	Smith River											2653	219		2434	91.7%	
2	41QJ	Missouri River from Holter Dam to Sun River											2584	0		2584	100.0%	
3	76F	Blackfoot River											3691	0		3691	100.0%	
4	42B	Tongue River including Hanging Woman											1342	500		842	62.7%	
5	41Q	Missouri River from Sun River to Marias River											4079	4056		106	2.6%	

BASINS YET TO BE EXAMINED													TOTAL	UNEXAMINED	Examined	%	
													66242	22952	47346		
1	40EJ	Missouri Riv between Bullwacker & Musselshell											2531	2531	0	0.0%	
2	41R	Arrow Creek											2204	2013	191	8.7%	
3	41T	Missouri River from Marias incl Bullwacker Cr											3073	3073	0	0.0%	
4	42M	Yellowstone River below Powder River											5282	5282	0	0.0%	
5	43N	Shoshone River											164	164	0	0.0%	
													SUBTOTAL	13254	13063	0	191
		<u>Chief Water Judge</u>	<u>Court Administrator</u>	<u>Water Masters</u>	<u>Water Masters</u>	<u>Water Masters</u>	<u>Clerk Of Court</u>	<u>Deputy Clerks</u>									
		C. Bruce Loble	Sandra Palakovich	Kathryn Lambert	Doug Ritter	Anna Stradley-Rodman	Anna Burton	Patty Gunderson	TOTAL	215378	36796						
				Anika Stern	Colleen Coyle	Peter Fritsch		Dianne Lawson									
				Dan Cole	Hugh McFadden			Emily Emmons	Late claims filed and recorded= 4986								
				Jay Porteen	Mary Gallagher			Joy Robinson									
				Terry Dawson	Katy Brandis				Claim count for benchmark (57,000 - 36,796) = 20,204								
				Jay Porteen													

Basin Location and Adjudication Status

08/23/07



- ⌂ Water Court
- ^ Regional Offices
- ! ! ! Enforcement Actions
- - - Counties
- ▨ Reservations

Basin Boundary & Decree Status

- Not Yet Examined
- Currently Examining
- ▨ Summary Report Issued
- Temporary Decree
- Preliminary Decree
- Final Decree

**DNRC REPORT TO EQC
HB22 ADJUDICATION PROGRESS
January 14, 2008**

Claims Examination Progress

- First benchmark 8,000 claims by 12-31-2006
 - **Second benchmark 19,000 claims by 12-31-2008**
 - Claims examined July 2005 thru **Dec, 31 2007** **24,052**
 - Claims examined by Purpose
 - o Irrigation 5,288 22%
 - o Stock 14,537 60%
 - o Domestic 2,536 11%
 - o Other 1,691 7%
- 24,052**

Claims remaining to be examined **32,948**

Total Claims examined based on original
remaining 57,000 claims (57,000 – 32,948) = ***24,052**

*1470 claims were examined prior to enactment of HB22

Summary Reports to Water Court

Union Creek (part of 76F)	May 19, 2005
Teton River (41O)	August 15, 2005
Big Hole River (41D)	October 31, 2006
Tongue River, below Hanging Woman Creek (42C)	August 7, 2007
Blackfoot River (76F)	August 14, 2007
Missouri River, from Holter Dam to Sun River (41QJ)	August 15, 2007
Tongue River, above Hanging Woman Creek (42B)	December 5, 2007

Decrees Issued by Water Court

Teton Basin Decree	December 29, 2005	2,500 claims
Union Creek Decree	March 10, 2006	42 claims
Big Hole River Decree	April 6, 2007	3,892 claims

Above decrees scanned and available at: http://dnrc.mt.gov/wrd/water_rts/adjudication/default.asp

Basin Status

BASIN	WORK STATUS	EST COMPLETION DATE	
Smith River (41J)	Summary prep pending	1	2008
Flatwillow Creek (40B)	Summary prep pending	2	2008
Beaver Creek (40M)	Summary prep pending	2	2008
Pryor Creek (43E)	Summary prep pending	1	2009
Little Big Horn River (43O)	Summary prep pending	3	2009
Big Horn R below Greybull R (43P)	Summary prep pending	7	2009
Milk River between Fresno & Whitewater (40J)	Summary prep pending	7	2009
Peoples Creek (40I)	Summary prep pending	12	2009
Milk River above Fresno (40F)	Summary prep pending	7	2011
Cut Bank River (41L)	Summary prep pending	7	2012
St. Mary River (40T)	Summary prep pending	7	2012
Two Medicine River (41M)	Summary prep pending	8	2012
Rosebud Creek (42A)	Examination in progress	7	2008
Beaverhead River (41B)	Examination in progress	7	2009
Big Muddy Creek (40R)	Examination in progress	10	2009
Missouri R to Marias (41Q)	Examination in progress	7	2010
Flathead River (76LJ)	Examination in progress	12	2010
Flathead R below Flathead Lake (76L)	Examination in progress	10	2011
Red Rock River (41A)	Examination in progress	3	2012
Marias River (41P)	Examination in progress	4	2014
Missouri R from Marias to Bullwacker (41T)	Examination in progress	5	2014
Bitterroot R, E side (76HA)	Examination in progress	6	2015

Shoshone River (43N)	To be Examined	1	2009
Arrow Creek (41R)	To be Examined	7	2010
Yellowstone R below Powder R (42M)	To be Examined	8	2012
Missouri R between Bullwacker & Musselshell (40EJ)	To be Examined	3	2015

District Court Enforcement Actions

- Completed water court assistance on 23 streams 2005 season
- Completed water court assistance on 23 streams 2006 season
- Completed water court assistance on 26 streams 2007 season
- Automated indexes are now in use

Expenses

YTD FY08: Operating Costs	\$ 118,620.00
Personnel services	<u>\$ 830,708.00</u>
Total	\$ 949,328.00
Budget	\$2,506,301.00

Billing System

- 108,000 bills mailed Dec. 27, 2005
- 18,552 2nd bills mailed March 1, 2006
- Estimated revenue generated \$6.2 million
- Revenue received **\$5.123 million** representing 93,737 invoices paid (in full /or part)

Appeals

- 4,999 Appeals received to date
 - o 3,071 appeals based on ownership;
 - o 1,928 appeals based on fee calculation
- **1545 appeals have been resolved to date (239 denied, 1306 resolved with fee correction)**

Ownership Records / Forms Received

(Form 608) Ownership Updates
(Form 602) Notices of Completion of Groundwater Development (wells 35gpm or less)

Fiscal Year	608 Counts	602 Counts
2008	2446	1590
2007	6093	3717
2006	13998	5948
2005	5414	3453
2004	4780	3053

- **HB 39 Automate Ownership Updates effective July 1, 2008**
 - o **Geocode matching to water rights completed in 31 eastern Montana basins with 85% accuracy.**
 - o Redesign of DOR Realty Transfer Certificate completed August 2007
 - o Purchase software for matching property geocodes with water right parcels in July. Match and upload geocodes to water right database by June 2008.
 - o DOR Orion property records system updated with water right fields by June 2008
 - o Public and realty industry education on HB 39 and new process Aug 2007 thru June 2008

Database Progress

- **Final contract in progress for development of Reserved Water Right Compact water right records, automating annual reporting and implementing subordination provisions. Completion date – March 2008**
- Moved Water Right Database to ITSD in May 2007.
- Automated water court objection list (120 hours) August 2007

Montana General Adjudication Basin Status														Thru Dec 31, 2007			
Basin #	Basin Name	Cost	Water Clerk	Date Issued	Date Issued	Date Issued	Date Deadline	Date Deadline	Counter Objection	Counter Objection	Objection list	Deadline Notice of Appearance	Total Claims	Total Unexamined Claims	Decreed Claims to Date	Verified Claims	
																	Master/ Temporary Preliminary Final
	Northern Cheyenne Compact		BL/AB		19-Jan-94		18-Jul-94						1		1		
	Fort Peck Compact		BL/AB		6-Apr-94		3-Oct-94						1		1		
	National Park Service Compact		BL/AB		10-Dec-96		9-Jun-97						1		1		
	Rocky Boy's Compact		BL/AB		27-Apr-00		24-Oct-00						1		1		
	US F&WS Benton Lake Compact		BL/AB		5-Apr-01		2-Oct-01						1		1		
	US F&WS Red Rock Lakes Compact		BL/AB		10-May-02		6-Nov-02						1		1		
	US F&WS Black Coulee Compact		BL/AB		31-Oct-02		28-Apr-03						1		1		
FINAL DECREES																	
1	42I	Little Powder River	\$ 65.00			7-May-81	31-May-83						2281	0	2281	yes	
2	42J	Powder River	\$ 65.00			7-May-81	31-May-83						8934	0	8934	yes	
3	40P	Redwater River	\$ 35.00			6-Jan-84	22-May-85	9-Mar-84	23-Apr-84			21-May-84	26-Jul-84	1940	0	1940	yes
4	38H	Belle Fourche River above Cheyenne	\$ 20.00			2-Nov-83	27-Mar-84	3-Feb-84						210	0	210	yes
5	39H	Little Missouri below Little Beaver	\$ 20.00			2-Nov-83	27-Mar-84	3-Feb-84						203	0	203	yes
6	42L	O'Fallon Creek	\$ 55.00			7-Feb-84	17-Apr-85	10-May-84	25-Jun-84			25-Jul-84	28-Aug-84	2786	0	2786	yes
PRELIMINARY DECREES													SUBTOTAL	16354	0	16354	
1	40G	Sage Creek	\$ 20.00	KL/AB		20-Dec-83		23-Mar-84	13-Apr-84			2-May-84	7-Jun-84	943	0	943	yes
2	41N	Willow Creek	\$ 25.00	KL/AB		6-Jul-84		9-Oct-84				31-Oct-84	5-Dec-84	1489	0	1489	yes
3	40D	Big Dry Creek	\$ 55.00	KL/AB		28-Sep-84		4-Jan-85				14-Feb-85	29-Mar-85	2985	0	2985	yes
4	39G	Beaver Creek	\$ 20.00	KL/AB		31-Jan-85		10-May-85				19-Jun-85	22-Jul-85	708	0	708	yes
5	43QJ	Yell R from Bridger to Clarks Fork Ye	\$ 20.00	KL/AB		23-Jul-85		21-Oct-85	3-Feb-86			21-Mar-86	21-Apr-86	1088	0	1088	yes
6	40N	Rock Creek	\$ 30.00	BL/AB		13-Aug-85		18-Nov-85				27-Feb-86	31-Mar-86	1520	0	1520	yes
7	42K	Yellowstone River between Tongue &	\$ 30.00	KL/AB		19-Sep-85		18-Nov-85	18-Mar-86			2-May-86	2-Jun-86	1479	0	1479	yes
8	40O	Milk River below Whitewater including	\$ 280.00	MG/		24-May-95		20-Nov-95	16-May-96	14-Nov-97	13-Jan-98	4-Feb-98	6-Apr-98	3403	97	3306	
9	76HF	Westside Subbasin Bitterroot River	\$ 365.00	DR/SK		14-Jan-98		13-Jul-98	13-Oct-98	10-May-99	9-Jul-99	25-Aug-99	25-Oct-99	3774	0	3774	
10	40S	Missouri River below Fort Peck Dam	\$ 265.00	HM/JR		29-Dec-99		26-Jun-00	25-Aug-00	2-Jan-01	5-Mar-01	10-Apr-01	11-Jun-01	2966	0	2966	
11	40Q	Poplar River	\$ 170.00	HM/JR		29-Dec-99		26-Jun-00	25-Sep-00	2-Jan-01	5-Mar-01	10-Apr-01	11-Jun-01	2080	0	2080	
12	40H	Big Sandy Creek	\$ 85.00	CC/PG		22-Jan-03		21-Jul-03	17-Oct-03	11-Dec-03	9-Feb-04			827	30	797	
TEMPORARY PRELIMINARY DECREES													SUBTOTAL	23262	127	23135	
1	76N	Lower Clark Fork	\$ 25.00	KL/AB	28-Feb-84			4-Jun-84	3-Aug-84			30-Aug-84	5-Oct-84	1245	0	1245	yes
2	76C	Fisher River	\$ 20.00	KL/AB	28-Feb-84			4-Jun-84	3-Aug-84			30-Aug-84	5-Oct-84	245	0	245	yes
3	76D	Kootenai River	\$ 25.00	KL/AB	22-Mar-84			26-Jun-84	10-Aug-84			30-Aug-84	5-Oct-84	1462	0	1462	yes
4	76B	Yaak River	\$ 20.00	KL/AB	22-Mar-84			26-Jun-84	10-Aug-84			30-Aug-84	5-Oct-84	104	0	104	yes

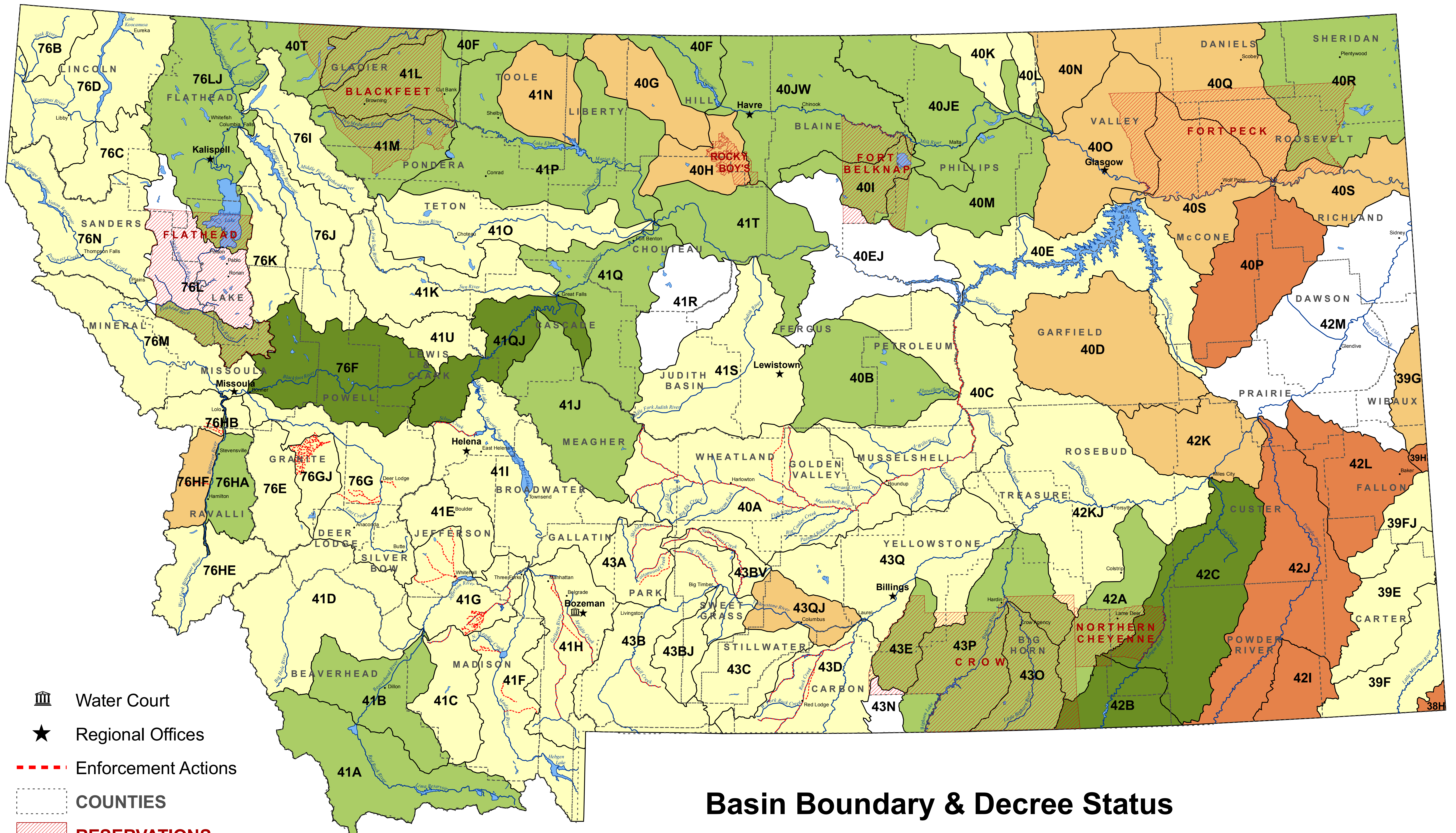
5	76GJ	Flint Creek	\$ 20.00	KL/AB	29-Mar-84			3-Jul-84	3-Sep-84			21-Nov-84	31-Dec-84	1050	0	1050	yes	
6	76E	Rock Creek	\$ 20.00	KL/AB	29-Mar-84			3-Jul-84	20-Aug-84			18-Oct-84	23-Nov-84	719	0	719	yes	
7	41U	Dearborn River	\$ 30.00	KL/AB	10-May-84			9-Aug-84	24-Aug-84			27-Sep-84	2-Nov-84	876	0	876	yes	
8	41S	Judith River	\$ 90.00	KL/PG	17-May-84			21-Aug-84	4-Oct-84			13-Nov-84	19-Dec-84	5268	0	5268	yes	
9	41F	Madison River	\$ 55.00	KL/AB	25-Jul-84			29-Oct-84	29-Nov-84			14-Feb-85	29-Mar-85	2842	10	2832	yes	
10	76K	Swan River	\$ 20.00	KL/AB	9-Aug-84			13-Nov-84				28-Dec-84	1-Feb-85	573	0	573	yes	
11	76I	Middle Fork Flathead River	\$ 20.00	BL/AB	9-Aug-84			13-Nov-84				28-Dec-84	1-Feb-85	199	17	182	yes	
12	76J	South Fork Flathead River	\$ 20.00	BL/AB	9-Aug-84			13-Nov-84				28-Dec-84	1-Feb-85	130	0	130	yes	
13	76M	Middle Clark Fork River	\$ 50.00	KL/AB	29-Nov-84			5-Mar-85	3-Jun-85			3-Oct-85	7-Nov-85	2587	7	2580	yes	
14	43BV	Sweet Grass Creek	\$ 20.00	KL/PG	19-Dec-84			26-Mar-85	10-May-85			15-Jul-85	14-Aug-85	826	0	826	yes	
15	43B	Yellowstone River above & incl Bridge	\$ 80.00	KL/PG	16-Jan-85			23-Apr-85	22-Jul-85			3-Mar-86	4-Apr-86	4890	30	4860	yes	
16	40L	Frenchman Creek	\$ 20.00	KL/AB	16-Jan-85			23-Apr-85				12-Jul-85	16-Jul-85	418	0	418	yes	
17	39FJ	Little Beaver Creek	\$ 20.00	KL/AB	31-Jan-85			10-May-85				19-Jun-85	22-Jul-85	984	0	984	yes	
18	39F	Little Missouri above Little Beaver Cre	\$ 50.00	KL/AB	1-Feb-85			10-May-85				14-Aug-85	13-Sep-85	2993	0	2993	yes	
19	39E	Box Elder Creek	\$ 45.00	KL/AB	1-Feb-85			10-May-85				1-Aug-85	3-Sep-85	2474	1	2473	yes	
20	40E	Missouri R. between Muss & Fort Pec	\$ 50.00	BL/AB	7-Mar-85			7-Jun-85	8-Jul-85			16-Oct-85	22-Nov-85	3010	0	3010	yes	
21	43BJ	Boulder River tributary of Yellowstone	\$ 20.00	KL/PG	3-Apr-85			3-Jul-85	3-Sep-85			6-Nov-85	11-Dec-85	826	0	826	yes	
22	40A	Musselshell River	\$ 100.00	KL/PG	7-May-85			6-Jul-85	1-Nov-85			8-Apr-86	5-May-86	5812	0	5812	yes	
23	41K	Sun River	\$ 50.00	DR/PG	14-May-85			13-Aug-85	13-Jan-86			11-Nov-88	15-Dec-88	2856	0	2856	yes	
24	76G	Clark Fork River above Blackfoot Riv	\$ 80.00	DR/SK	17-May-85			15-Aug-85	17-Dec-85			23-Mar-88	22-Apr-88	4935	0	4935	yes	
25	41E	Boulder River tributary of Jefferson R	\$ 25.00	BL/AB	20-Jun-85			17-Sep-85	17-Dec-85			30-Sep-87	30-Oct-87	1249	0	1249	yes	
26	43C	Stillwater River	\$ 35.00	KL/AB	7-Nov-85			5-Feb-86	6-May-86			13-Jun-86	14-Jul-86	1743	0	1743	yes	
27	41H	Gallatin River	\$ 105.00	CC/PG	26-Sep-85			26-Dec-85	24-Jun-86			6-Aug-87	8-Sep-87	5756	11	5745	yes	
28	43A	Shields River	\$ 125.00	CC/PG	3-Aug-88			1-Nov-88	16-Mar-89			7-Nov-89	7-Dec-89	3395	0	3395	yes	
29	41G	Jefferson River	\$ 135.00	KL/AB	17-Oct-89			16-Apr-90	16-Jul-90			16-Apr-91	17-May-91	2474	67	2407	yes	
30	40K	Whitewater Creek	\$ 160.00	BL/AB	21-Nov-89			21-May-90	20-Aug-90			19-Dec-90	18-Jan-91	3967	378	3589	yes	
31	40C	Lower Musselshell River	\$ 185.00	CC/PG	6-Feb-90			6-Aug-90	5-Dec-90			17-Oct-91	18-Nov-91	3871	1	3870	yes	
32	41C	Ruby River	\$ 130.00	KL/AB	14-Nov-90			14-May-91	12-Aug-91			19-Apr-95	20-Jun-95	2201	18	2183		
33	76HB	North End Subbasin Bitterroot River	\$ 135.00	DR/SK	16-Sep-92			15-Mar-93	7-Sep-93			23-Mar-94	24-May-94	1164	3	1161		
34	43D	Clarks Fork Yellowstone River	\$ 275.00	KL/SK	9-Jun-93			6-Dec-93	1-Jun-94			24-Jan-95	31-Mar-95	2646	16	2630		
35	76HE	South End Subbasin Bitterroot River	\$ 145.00	DR/SK	25-May-94			21-Nov-94	21-Mar-95			22-Jun-95	22-Aug-95	1533	4	1529		
36	41I	Missouri R above Holter Dam	\$ 480.00	KL/PG	8-Mar-95			5-Sep-95	9-Jan-96			10-Jul-96	17-Sep-96	5237	69	5168		
37	43Q	Yell R between Clarks Fork Yell & Big	\$ 210.00	KL/PG	29-Dec-98			28-Jun-99	30-Aug-99	24-Nov-99	24-Jan-00	23-Feb-00	24-Apr-00	2473	0	2473		
38	42KJ	Yell R between Bighorn & Tongue Riv	\$520.00	JP/EE	14-Nov-03			12-May-04	8-Nov-04	27-Dec-04	25-Feb-05	20-Oct-05	19-Dec-05	4775	8	4767		
39	41O	Teton River	\$355.00	DR/EE	29-Dec-05			27-Jun-06	5-Dec-06	27-Mar-07	29-May-07	15-Nov-07	17-Jan-08	2524	0	2524		
40	76FA	Union Creek	\$58.00	HM/JR	3-Mar-06			6-Sep-06	5-Dec-06	3-Jan-07	5-Mar-07	13-Mar-07	14-May-07	42	0	42		
41	41D	Big Hole River	\$ 407.00	KL/PG	6-Apr-07			3-Oct-07	31-Mar-08					3892	0	3892		

													SUBTOTAL	96266	640	95626		
													TOTAL	UNEXAMINED		Total		
BASINS CURRENTLY BEING EXAMINED													CLAIMS	CLAIMS		Examined	%	
BILLINGS REGIONAL OFFICE																		
1	42A	Rosebud Creek												1201	259		942	78.4%
2	42C	Tongue River below Hanging Woman												4689	0		4689	100.0%
3	43E	Pryor Creek												623	0		623	100.0%
4	43O	Little Big Horn River												1197	0		1197	100.0%
5	43P	Bighorn River below Greybull River												2132	57		2075	97.3%
BOZEMAN REGIONAL OFFICE																		
1	41A	Red Rock River												2767	2053		714	25.8%
GLASGOW REGIONAL OFFICE																		
1	40R	Big Muddy Creek												2006	411		1595	79.5%
HAVRE REGIONAL OFFICE																		
1	40T	St. Mary River												181	6		175	96.7%
2	40F	Milk River above Fresno												2323	7		2316	99.7%
3	40I	Peoples Creek												670	46		624	93.1%
4	40J	Milk River between Fresno Res & Whitewater												12856	37		12819	99.7%
5	40M	Beaver Creek Tributary of Milk River												2923	18		2905	99.4%
6	41L	Cut Bank River												647	0		647	100.0%
7	41P	Marias River												3688	2915		773	21.0%
8	41M	Two Medicine River												1110	34		1076	96.9%
HELENA REGIONAL OFFICE																		
1	41B	Beaverhead River												2146	1201		945	44.0%
KALISPELL REGIONAL OFFICE																		
1	76LJ	Flathead River including Flathead Lake												5275	5179		96	1.8%
LEWISTOWN REGIONAL OFFICE																		
1	40B	Flatwillow Creek												3633	3		3630	99.9%
MISSOULA REGIONAL OFFICE																		
1	76HA	Bitterroot River, East side												2837	2087		750	26.4%
2	76L	Flathead River below Flathead Lake												3068	2700		368	12.0%
SWAT TEAMS																		
1	41J	Smith River												2653	11		2642	99.6%
2	41QJ	Missouri River from Holter Dam to Sun River												2445	0		2445	100.0%
3	76F	Blackfoot River												3690	0		3690	100.0%
	42B	Tongue River including Hanging Woman												1342	0		1342	100.0%
5	41Q	Missouri River from Sun River to Marias River												4079	2513		1566	38.4%

6	41T	Missouri River from Marias incl Bullwacker Cr										3073	2654		419	13.6%		
BASINS YET TO BE EXAMINED												TOTAL	UNEXAMINED	Examined	%			
												73254	22191	51063				
1	40EJ	Missouri Riv between Bullwacker & Musselshell										2531	2531		0	0.0%		
2	41R	Arrow Creek										2204	2013		191	8.7%		
3	42M	Yellowstone River below Powder River										5282	5282		0	0.0%		
4	43N	Shoshone River										164	164		0	0.0%		
												SUBTOTAL	10181	9990	0	191		
<u>Chief Water Judge</u>			<u>Court Administrator</u>			<u>Water Masters</u>		<u>Water Masters</u>		<u>Water Masters</u>		<u>Clerk Of Court</u>		<u>Deputy Clerks</u>				
C. Bruce Loble			Sandra Palakovich			Kathryn Lambert		Doug Ritter		Anna Stradley-Rodman		Anna Burton		Patty Gunderson		TOTAL	219317	32948
			Anika Stern			Colleen Coyle		Peter Fritsch				Dianne Lawson						
			Dan Cole			Hugh McFadden						Emily Emmons		Late claims filed and recorded= 4986				
			Jay Porteen									Joy Robinson						
			Terry Dawson			Katy Brandis								Claim count for benchmark (57,000 - 32,948) =				
			Jay Porteen															24052

Basin Location and Adjudication Status

1/7/08



Basin Boundary & Decree Status



BASINS BY COMPLETION DATE - DNRC WORK PLAN 2008				
BASIN COUNT	BASIN NAME	WORK STATUS	EST COMPLETE DATE	
1	Beaver Creek (40M)	Summary prep pending	4	2008
2	Flatwillow Creek (40B)	Summary prep pending	4	2008
3	Smith River (41J)	Summary prep pending	5	2008
4	Rosebud Creek (42A)	Examination in progress	7	2008
5	Milk River between Fresno & Whitewater (40J)	Summary prep pending	7	2008
6	Pryor Creek (43E)	Summary prep pending	1	2009
7	Shoshone River (43N)	To be Examined	1	2009
8	Little Big Horn River (43O)	Summary prep pending	3	2009
9	Beaverhead River (41B)	Examination in progress	7	2009
10	Big Horn R below Greybull R (43P)	Summary prep pending	7	2009
11	Big Muddy Creek (40R)	Examination in progress	10	2009
12	Peoples Creek (40I)	Summary prep pending	12	2009
13	Arrow Creek (41R)	To be Examined	7	2010
14	Missouri R to Marias (41Q)	Examination in progress	7	2010
15	Flathead River (76LJ)	Examination in progress	12	2010
16	Milk River above Fresno (40F)	Summary prep pending	7	2011
17	Flathead R below Flathead Lake (76L)	Examination in progress	10	2011
18	Red Rock River (41A)	Examination in progress	3	2012
19	Cut Bank River (41L)	Summary prep pending	7	2012
20	St. Mary River (40T)	Summary prep pending	7	2012
21	Two Medicine River (41M)	Summary prep pending	8	2012
22	Yellowstone R below Powder R (42M)	To be Examined	8	2012
23	Marias River (41P)	Examination in progress	4	2014
24	Missouri R from Marias to Bullwacker (41T)	Examination in progress	5	2014
25	Missouri R between Bullwacker & Musselshell (40EJ)	To be Examined	3	2015
26	Bitterroot R, E side (76HA)	Examination in progress	6	2015

District Court Enforcement Actions

- Completed water court assistance on 23 streams 2005 season
- Completed water court assistance on 23 streams 2006 season
- Completed water court assistance on 26 streams 2007 season
- Automated indexes are now in use

Expenses

YTD FY08:	Operating Costs	\$ 194,947.00
	Personnel services	<u>\$ 1,091,259.00</u>
	Total	\$ 1,286,206.00
	Budget	\$ 2,506,301.00

Billing System

- 108,000 bills mailed Dec. 27, 2005
- 18,552 2nd bills mailed March 1, 2006
- Estimated revenue generated \$6.2 million
- Revenue received **\$5.139 million** representing 93,737 invoices paid (in full /or part)

Appeals

- 4,999 Appeals received to date
 - o 3,071 appeals based on ownership;
 - o 1,928 appeals based on fee calculation
- **1610 appeals have been resolved to date (264 denied, 1346 resolved with fee correction)**
- **Hired a temp to help resolve appeals**

Ownership Records / Forms Received

(Form 608) Ownership Updates

(Form 602) Notices of Completion of Groundwater Development (wells 35gpm or less)

Fiscal Year	608 Counts	602 Counts
2008	3206	2016
2007	6098	3720
2006	13998	5948
2005	5414	3453
2004	4780	3053

- **HB 39 Automate Ownership Updates effective July 1, 2008**
 - o **Assign Geocodes to water rights in database by March 27.**
 - o Redesign of DOR Realty Transfer Certificate completed August 2007
 - o Purchase software for matching property geocodes with water right parcels in July. Match and upload geocodes to water right database by June 2008.
 - o DOR Orion property records system updated with water right fields by June 2008
 - o Public and realty industry education on HB 39 and new process Aug 2007 thru June 2008

Database Progress

- **Final contract in progress for development of Reserved Water Right Compact water right records, automating annual reporting and implementing subordination provisions. Completion date – March 2008**
- Moved Water Right Database to ITSD in May 2007.
- Automated water court objection list (120 hours) August 2007

Montana General Adjudication Basin Status														THRU FEBRUARY 29, 2008				
Basin #	Basin Name	Cost	Water Master/ Clerk	Date Temporary Issued	Date Preliminary Issued	Date Final Issued	Date Objection Deadline	Date Extended Deadline	Counter Objection Notice Mailed	Counter Objection Deadline	Objection list Mailed	Deadline Notice of Appearance	Total Claims	Total Unexamined Claims	Decreed Claims to Date	Verified Claims		
	Northern Cheyenne Compact		BL/AB		19-Jan-94		18-Jul-94						1		1			
	Fort Peck Compact		BL/AB		6-Apr-94		3-Oct-94						1		1			
	National Park Service Compact		BL/AB		10-Dec-96		9-Jun-97						1		1			
	Rocky Boy's Compact		BL/AB		27-Apr-00		24-Oct-00						1		1			
	US F&WS Benton Lake Compact		BL/AB		5-Apr-01		2-Oct-01						1		1			
	US F&WS Red Rock Lakes Compact		BL/AB		10-May-02		6-Nov-02						1		1			
	US F&WS Black Coulee Compact		BL/AB		31-Oct-02		28-Apr-03						1		1			
FINAL DECREES																		
1	42I	Little Powder River	\$ 65.00			7-May-81	31-May-83						2281	0	2281	yes		
2	42J	Powder River	\$ 65.00			7-May-81	31-May-83						8934	0	8934	yes		
3	40P	Redwater River	\$ 35.00			6-Jan-84	22-May-85	9-Mar-84	23-Apr-84		21-May-84	26-Jul-84	1940	0	1940	yes		
4	38H	Belle Fourche River above Cheyenne	\$ 20.00			2-Nov-83	27-Mar-84	3-Feb-84					210	0	210	yes		
5	39H	Little Missouri below Little Beaver	\$ 20.00			2-Nov-83	27-Mar-84	3-Feb-84					203	0	203	yes		
6	42L	O'Fallon Creek	\$ 55.00			7-Feb-84	17-Apr-85	10-May-84	25-Jun-84		25-Jul-84	28-Aug-84	2786	0	2786	yes		
													SUBTOTAL	16354	0	16354		
PRELIMINARY DECREES																		
1	40G	Sage Creek	\$ 20.00	KL/AB		20-Dec-83		23-Mar-84	13-Apr-84		2-May-84	7-Jun-84	943	0	943	yes		
2	41N	Willow Creek	\$ 25.00	KL/AB		6-Jul-84		9-Oct-84			31-Oct-84	5-Dec-84	1489	0	1489	yes		
3	40D	Big Dry Creek	\$ 55.00	KL/AB		28-Sep-84		4-Jan-85			14-Feb-85	29-Mar-85	2985	0	2985	yes		
4	39G	Beaver Creek	\$ 20.00	KL/AB		31-Jan-85		10-May-85			19-Jun-85	22-Jul-85	708	0	708	yes		
5	43QJ	Yell R from Bridger to Clarks Fork Ye	\$ 20.00	KL/AB		23-Jul-85		21-Oct-85	3-Feb-86		21-Mar-86	21-Apr-86	1088	0	1088	yes		
6	40N	Rock Creek	\$ 30.00	BL/AB		13-Aug-85		18-Nov-85			27-Feb-86	31-Mar-86	1520	0	1520	yes		
7	42K	Yellowstone River between Tongue &	\$ 30.00	KL/AB		19-Sep-85		18-Nov-85	18-Mar-86		2-May-86	2-Jun-86	1479	0	1479	yes		
8	40O	Milk River below Whitewater including	\$ 280.00	MG/		24-May-95		20-Nov-95	16-May-96	14-Nov-97	13-Jan-98	4-Feb-98	6-Apr-98	3403	97	3306		
9	76HF	Westside Subbasin Bitterroot River	\$ 365.00	DR/SK		14-Jan-98		13-Jul-98	13-Oct-98	10-May-99	9-Jul-99	25-Aug-99	25-Oct-99	3774	0	3774		
10	40S	Missouri River below Fort Peck Dam	\$ 265.00	HM/JR		29-Dec-99		26-Jun-00	25-Aug-00	2-Jan-01	5-Mar-01	10-Apr-01	11-Jun-01	2966	0	2966		
11	40Q	Poplar River	\$ 170.00	HM/JR		29-Dec-99		26-Jun-00	25-Sep-00	2-Jan-01	5-Mar-01	10-Apr-01	11-Jun-01	2080	0	2080		
12	40H	Big Sandy Creek	\$ 85.00	CC/PG		22-Jan-03		21-Jul-03	17-Oct-03	11-Dec-03	9-Feb-04			827	30	797		
13	42C	Tongue River below Hanging Woman	\$ 502.00	JP/EE		28-Feb-08		26-Aug-08						4689	0	4710	100.0%	
14	42B	Tongue River including Hanging Won	\$ 163.00	JP/EE		28-Feb-08		26-Aug-08						1342	0	1345	100.0%	
													SUBTOTAL	29293	127	29190		
TEMPORARY PRELIMINARY DECREES																		
1	76N	Lower Clark Fork	\$ 25.00	KL/AB	28-Feb-84			4-Jun-84	3-Aug-84			30-Aug-84	5-Oct-84	1245	0	1245	yes	
2	76C	Fisher River	\$ 20.00	KL/AB	28-Feb-84			4-Jun-84	3-Aug-84			30-Aug-84	5-Oct-84	245	0	245	yes	

3	76D	Kootenai River	\$ 25.00	KL/AB	22-Mar-84			26-Jun-84	10-Aug-84			30-Aug-84	5-Oct-84	1462	0	1462	yes	
4	76B	Yaak River	\$ 20.00	KL/AB	22-Mar-84			26-Jun-84	10-Aug-84			30-Aug-84	5-Oct-84	104	0	104	yes	
5	76GJ	Flint Creek	\$ 20.00	KL/AB	29-Mar-84			3-Jul-84	3-Sep-84			21-Nov-84	31-Dec-84	1050	0	1050	yes	
6	76E	Rock Creek	\$ 20.00	KL/AB	29-Mar-84			3-Jul-84	20-Aug-84			18-Oct-84	23-Nov-84	719	0	719	yes	
7	41U	Dearborn River	\$ 30.00	KL/AB	10-May-84			9-Aug-84	24-Aug-84			27-Sep-84	2-Nov-84	876	0	876	yes	
8	41S	Judith River	\$ 90.00	KL/PG	17-May-84			21-Aug-84	4-Oct-84			13-Nov-84	19-Dec-84	5268	0	5268	yes	
9	41F	Madison River	\$ 55.00	KL/AB	25-Jul-84			29-Oct-84	29-Nov-84			14-Feb-85	29-Mar-85	2842	10	2832	yes	
10	76K	Swan River	\$ 20.00	KL/AB	9-Aug-84			13-Nov-84				28-Dec-84	1-Feb-85	573	0	573	yes	
11	76I	Middle Fork Flathead River	\$ 20.00	BL/AB	9-Aug-84			13-Nov-84				28-Dec-84	1-Feb-85	199	17	182	yes	
12	76J	South Fork Flathead River	\$ 20.00	BL/AB	9-Aug-84			13-Nov-84				28-Dec-84	1-Feb-85	130	0	130	yes	
13	76M	Middle Clark Fork River	\$ 50.00	KL/AB	29-Nov-84			5-Mar-85	3-Jun-85			3-Oct-85	7-Nov-85	2587	7	2580	yes	
14	43BV	Sweet Grass Creek	\$ 20.00	KL/PG	19-Dec-84			26-Mar-85	10-May-85			15-Jul-85	14-Aug-85	826	0	826	yes	
15	43B	Yellowstone River above & incl Bridge	\$ 80.00	KL/PG	16-Jan-85			23-Apr-85	22-Jul-85			3-Mar-86	4-Apr-86	4890	30	4860	yes	
16	40L	Frenchman Creek	\$ 20.00	KL/AB	16-Jan-85			23-Apr-85				12-Jul-85	16-Jul-85	418	0	418	yes	
17	39FJ	Little Beaver Creek	\$ 20.00	KL/AB	31-Jan-85			10-May-85				19-Jun-85	22-Jul-85	984	0	984	yes	
18	39F	Little Missouri above Little Beaver Cre	\$ 50.00	KL/AB	1-Feb-85			10-May-85				14-Aug-85	13-Sep-85	2993	0	2993	yes	
19	39E	Box Elder Creek	\$ 45.00	KL/AB	1-Feb-85			10-May-85				1-Aug-85	3-Sep-85	2474	1	2473	yes	
20	40E	Missouri R. between Muss & Fort Pec	\$ 50.00	BL/AB	7-Mar-85			7-Jun-85	8-Jul-85			16-Oct-85	22-Nov-85	3010	0	3010	yes	
21	43BJ	Boulder River tributary of Yellowstone	\$ 20.00	KL/PG	3-Apr-85			3-Jul-85	3-Sep-85			6-Nov-85	11-Dec-85	826	0	826	yes	
22	40A	Musselshell River	\$ 100.00	KL/PG	7-May-85			6-Jul-85	1-Nov-85			8-Apr-86	5-May-86	5812	0	5812	yes	
23	41K	Sun River	\$ 50.00	DR/PG	14-May-85			13-Aug-85	13-Jan-86			11-Nov-88	15-Dec-88	2856	0	2856	yes	
24	76G	Clark Fork River above Blackfoot Rive	\$ 80.00	DR/SK	17-May-85			15-Aug-85	17-Dec-85			23-Mar-88	22-Apr-88	4935	0	4935	yes	
25	41E	Boulder River tributary of Jefferson R	\$ 25.00	BL/AB	20-Jun-85			17-Sep-85	17-Dec-85			30-Sep-87	30-Oct-87	1249	0	1249	yes	
26	43C	Stillwater River	\$ 35.00	KL/AB	7-Nov-85			5-Feb-86	6-May-86			13-Jun-86	14-Jul-86	1743	0	1743	yes	
27	41H	Gallatin River	\$ 105.00	CC/PG	26-Sep-85			26-Dec-85	24-Jun-86			6-Aug-87	8-Sep-87	5756	11	5745	yes	
28	43A	Shields River	\$ 125.00	CC/PG	3-Aug-88			1-Nov-88	16-Mar-89			7-Nov-89	7-Dec-89	3395	0	3395	yes	
29	41G	Jefferson River	\$ 135.00	KL/AB	17-Oct-89			16-Apr-90	16-Jul-90			16-Apr-91	17-May-91	2474	67	2407	yes	
30	40K	Whitewater Creek	\$ 160.00	BL/AB	21-Nov-89			21-May-90	20-Aug-90			19-Dec-90	18-Jan-91	3967	378	3589	yes	
31	40C	Lower Musselshell River	\$ 185.00	CC/PG	6-Feb-90			6-Aug-90	5-Dec-90			17-Oct-91	18-Nov-91	3871	1	3870	yes	
32	41C	Ruby River	\$ 130.00	KL/AB	14-Nov-90			14-May-91	12-Aug-91			19-Apr-95	20-Jun-95	2201	18	2183		
33	76HB	North End Subbasin Bitterroot River	\$ 135.00	DR/SK	16-Sep-92			15-Mar-93	7-Sep-93			23-Mar-94	24-May-94	1164	3	1161		
34	43D	Clarks Fork Yellowstone River	\$ 275.00	KL/SK	9-Jun-93			6-Dec-93	1-Jun-94			24-Jan-95	31-Mar-95	2646	16	2630		
35	76HE	South End Subbasin Bitterroot River	\$ 145.00	DR/SK	25-May-94			21-Nov-94	21-Mar-95			22-Jun-95	22-Aug-95	1533	4	1529		
36	41I	Missouri R above Holter Dam	\$ 480.00	KL/PG	8-Mar-95			5-Sep-95	9-Jan-96			10-Jul-96	17-Sep-96	5237	69	5168		
37	43Q	Yell R between Clarks Fork Yell & Big	\$ 210.00	KL/PG	29-Dec-98			28-Jun-99	30-Aug-99	24-Nov-99	24-Jan-00	23-Feb-00	24-Apr-00	2473	0	2473		
38	42KJ	Yell R between Bighorn & Tongue Riv	\$520.00	JP/EE	14-Nov-03			12-May-04	8-Nov-04	27-Dec-04	25-Feb-05	20-Oct-05	19-Dec-05	4775	8	4767		
39	41O	Teton River	\$355.00	DR/EE	29-Dec-05			27-Jun-06	5-Dec-06	27-Mar-07	29-May-07	15-Nov-07	17-Jan-08	2524	0	2524		

40	76FA	Union Creek	\$58.00	HM/JR	3-Mar-06			6-Sep-06	5-Dec-06	3-Jan-07	5-Mar-07	13-Mar-07	14-May-07	42	0	42			
41	41D	Big Hole River	\$ 407.00	KL/PG	6-Apr-07			3-Oct-07	31-Mar-08					3892	0	3892			
42	41QJ	Missouri River from Holter Dam to Su	\$ 290.00	AS/EE	6-Feb-08			4-Aug-08						2445	0	2584		100.0%	
														SUBTOTAL	98711	640	98210		
														TOTAL	UNEXAMINED		Total		
		BASINS CURRENTLY BEING EXAMINED												CLAIMS	CLAIMS		Examined	%	
BILLINGS REGIONAL OFFICE																			
1	42A	Rosebud Creek												1201	259		942	78.4%	
3	43E	Pryor Creek												623	0		623	100.0%	
4	43O	Little Big Horn River												1197	0		1197	100.0%	
5	43P	Bighorn River below Greybull River												2132	57		2075	97.3%	
BOZEMAN REGIONAL OFFICE																			
1	41A	Red Rock River												2767	2031		736	26.6%	
GLASGOW REGIONAL OFFICE																			
1	40R	Big Muddy Creek												2006	318		1688	84.1%	
HAVRE REGIONAL OFFICE																			
1	40T	St. Mary River												181	6		175	96.7%	
2	40F	Milk River above Fresno												2323	7		2316	99.7%	
3	40I	Peoples Creek												670	46		624	93.1%	
4	40J	Milk River between Fresno Res & Whitewater												12856	37		12819	99.7%	
5	40M	Beaver Creek Tributary of Milk River												2923	18		2905	99.4%	
6	41L	Cut Bank River												647	0		647	100.0%	
7	41P	Marias River												3688	2689		999	27.1%	
8	41M	Two Medicine River												1110	34		1076	96.9%	
HELENA REGIONAL OFFICE																			
1	41B	Beaverhead River												2146	1058		1088	50.7%	
KALISPELL REGIONAL OFFICE																			
1	76LJ	Flathead River including Flathead Lake												5275	5139		136	2.6%	
LEWISTOWN REGIONAL OFFICE																			
1	40B	Flatwillow Creek												3633	0		3633	100.0%	
MISSOULA REGIONAL OFFICE																			
1	76HA	Bitterroot River, East side												2837	2087		750	26.4%	
2	76L	Flathead River below Flathead Lake												3068	2700		368	12.0%	
SWAT TEAMS																			
1	41J	Smith River												2653	11		2642	99.6%	
3	76F	Blackfoot River												3690	0		3690	100.0%	
5	41Q	Missouri River from Sun River to Marias River												4079	1987		2092	51.3%	

6	41T	Missouri River from Marias incl Bullwacker Cr										3073	2606		467	15.2%			
BASINS YET TO BE EXAMINED												TOTAL	UNEXAMINED	Examined	%				
												64778	21090	43688					
1	40EJ	Missouri Riv between Bullwacker & Musselshell										2531	2531		0	0.0%			
2	41R	Arrow Creek										2204	2013		191	8.7%			
3	42M	Yellowstone River below Powder River										5282	5282		0	0.0%			
4	43N	Shoshone River										164	164		0	0.0%			
												SUBTOTAL	10181	9990	0	191			
<u>Chief Water Judge</u>			<u>Court Administrator</u>			<u>Water Masters</u>		<u>Water Masters</u>		<u>Water Masters</u>		<u>Clerk Of Court</u>		<u>Deputy Clerks</u>					
C. Bruce Loble			Sandra Palakovich			Kathryn Lambert		Doug Ritter		Anna Stradley-Rodman		Anna Burton		Patty Gunderson		TOTAL	219317	31847	
			Anika Stern			Colleen Coyle		Peter Fritsch				Dianne Lawson							
			Dan Cole			Hugh McFadden						Emily Emmons		Late claims filed and recorded= 4986					
			Jay Porteen									Joy Robinson							
			Terry Dawson			Katy Brandis								Claim count for benchmark (57,000 - 31,847) =					
			Jay Porteen																

**DNRC REPORT TO EQC
HB22 ADJUDICATION PROGRESS
May 13, 2008**

Claims Examination Progress

- First benchmark 8,000 claims by 12-31-2006
 - **Second benchmark 19,000 claims by 12-31-2008**
 - Claims examined July 2005 thru **April, 30 2008** **25,818**
 - Claims examined by Purpose
 - o Irrigation 5,586 22%
 - o Stock 15,636 60%
 - o Domestic 2,758 11%
 - o Other 1,838 7%
- 25,818**

Claims remaining to be examined **31,182**
 Total Claims examined based on original
 remaining 57,000 claims (57,000 – **31,182**) = ***25,818**

*1470 claims were examined prior to enactment of HB22

Summary Reports to Water Court

Union Creek (part of 76F)	May 19, 2005
Teton River (41O)	August 15, 2005
Big Hole River (41D)	October 31, 2006
Tongue River, below Hanging Woman Creek (42C)	August 7, 2007
Blackfoot River (76F)	August 14, 2007
Missouri River, from Holter Dam to Sun River (41QJ)	August 15, 2007
Tongue River, above Hanging Woman Creek (42B)	December 5, 2007

Decrees Issued by Water Court

Teton Basin Decree	December 29, 2005	2,500 claims
Union Creek Decree	March 10, 2006	42 claims
Big Hole River Decree	April 6, 2007	3,892 claims
Missouri River 41QJ	Feb 6, 2008	2,584 claims
Tongue River 42C	Feb 28, 2008	4710 claims
Tongue River 42B	Feb 28, 2008	1345 claims

Above decrees scanned and available at: http://dnrc.mt.gov/wrd/water_rts/adjudication

BASINS BY COMPLETION DATE - DNRC WORK PLAN 2008				
BASIN COUNT	BASIN NAME	WORK STATUS	EST COMPLETE DATE	
1	Beaver Creek (40M)	Summary prep pending	6	2008
2	Flatwillow Creek (40B)	Summary prep pending	6	2008
3	Smith River (41J)	Summary prep pending	7	2008
4	Pryor Creek (43E)	Examination in progress	7	2008
5	Milk River between Fresno & Whitewater (40J)	Summary prep pending	9	2008
6	Little Big Horn River (43O)	Summary prep pending	1	2009
7	Shoshone River (43N)	To be Examined	3	2009
8	Big Horn R below Greybull R (43P)	Summary prep pending	3	2009
9	Beaverhead River (41B)	Examination in progress	7	2009
10	Rosebud Creek (42A)	Summary prep pending	7	2009
11	Big Muddy Creek (40R)	Examination in progress	10	2009
12	Peoples Creek (40I)	Summary prep pending	12	2009
13	Arrow Creek (41R)	To be Examined	7	2010
14	Missouri R to Marias (41Q)	Examination in progress	7	2010
15	Flathead River (76LJ)	Examination in progress	12	2010
16	Milk River above Fresno (40F)	Summary prep pending	7	2011
17	Flathead R below Flathead Lake (76L)	Examination in progress	10	2011
18	Red Rock River (41A)	Examination in progress	3	2012
19	Cut Bank River (41L)	Summary prep pending	7	2012
20	St. Mary River (40T)	Summary prep pending	7	2012
21	Two Medicine River (41M)	Summary prep pending	8	2012
22	Yellowstone R below Powder R (42M)	To be Examined	8	2012
23	Marias River (41P)	Examination in progress	4	2014
24	Missouri R from Marias to Bullwacker (41T)	Examination in progress	5	2014
25	Missouri R between Bullwacker & Musselshell (40EJ)	To be Examined	3	2015
26	Bitterroot R, E side (76HA)	Examination in progress	6	2015

District Court Enforcement Actions

- Completed water court assistance on 23 streams 2005 season
- Completed water court assistance on 23 streams 2006 season
- Completed water court assistance on 26 streams 2007 season
- **Completed water court assistance on 30 streams 2008 season**
- Automated indexes are now in use

Expenses

YTD FY08: Operating Costs	\$ 282,837.00
Personnel services	<u>\$ 1,355,855.00</u>
Total	\$ 1,638,692.00
Budget	\$ 2,506,301.00

Billing System

- 108,000 bills mailed Dec. 27, 2005
- 18,552 2nd bills mailed March 1, 2006
- Estimated revenue generated \$6.2 million
- Revenue received \$5.149 million representing 93,737 invoices paid (in full /or part)

Appeals

- 4,999 Appeals received to date
 - o 3,071 appeals based on ownership;
 - o 1,928 appeals based on fee calculation
- **1948 appeals have been resolved to date (265 denied, 1683 resolved with fee correction)**
- Hired a temp to help resolve appeals

Ownership Records / Forms Received

(Form 608) Ownership Updates

(Form 602) Notices of Completion of Groundwater Development (wells 35gpm or less)

Fiscal Year	608 Counts	602 Counts
2008	4251	2431
2007	6098	3720
2006	13998	5948
2005	5414	3453
2004	4780	3053

- **HB 39 Automate Ownership Updates effective July 1, 2008**
 - o **Testing Geocode field in water rights in database.**
 - o **Geocodes will be loaded in database by July 1.**
 - o Redesign of DOR Realty Transfer Certificate completed August 2007
 - o Purchase software for matching property geocodes with water right parcels in July. Match and upload geocodes to water right database by June 2008.
 - o DOR Orion property records system updated with water right fields by June 2008

- Public and realty industry education on HB 39 and new process Aug 2007 thru June 2008

Database Progress

- **Testing development of Reserved Water Right Compact water right records, automating annual reporting and implementing subordination provisions. Completion date – August 2008.**
- Moved Water Right Database to ITSD in May 2007.
- Automated water court objection list (120 hours) August 2007

**DNRC REPORT TO EQC
HB22 ADJUDICATION PROGRESS
July 15, 2008**

Claims Examination Progress

- First benchmark 8,000 claims by 12-31-2006
 - **Second benchmark 19,000 claims by 12-31-2008**
 - Claims examined July 2005 thru **June, 30 2008** **26,618**
 - Claims examined by Purpose
 - o Irrigation 5,838 22%
 - o Stock 16,088 60%
 - o Domestic 2,840 11%
 - o Other 1,852 7%
- 26,618**

Claims remaining to be examined **31,182**

Total Claims examined based on original
remaining 57,000 claims (57,000 – **30,382**) = ***26,618**

*1470 claims were examined prior to enactment of HB22

Summary Reports to Water Court

Union Creek (part of 76F)	May 19, 2005
Teton River (41O)	August 15, 2005
Big Hole River (41D)	October 31, 2006
Tongue River, below Hanging Woman Creek (42C)	August 7, 2007
Blackfoot River (76F)	August 14, 2007
Missouri River, from Holter Dam to Sun River (41QJ)	August 15, 2007
Tongue River, above Hanging Woman Creek (42B)	December 5, 2007

Decrees Issued by Water Court

Teton Basin Decree	December 29, 2005	2,500 claims
Union Creek Decree	March 10, 2006	42 claims
Big Hole River Decree	April 6, 2007	3,892 claims
Missouri River 41QJ	Feb 6, 2008	2,584 claims
Tongue River 42C	Feb 28, 2008	4710 claims
Tongue River 42B	Feb 28, 2008	1345 claims
Forest Service Compact	May 19, 2008	262 rights

Above decrees scanned and available at: http://dnrc.mt.gov/wrd/water_rts/adjudication

BASINS BY COMPLETION DATE - DNRC WORK PLAN 2008				
BASIN COUNT	BASIN NAME	WORK STATUS	EST COMPLETE DATE	
1	Beaver Creek (40M)	Summary prep pending	7	2008
2	Flatwillow Creek (40B)	Summary prep pending	7	2008
3	Smith River (41J)	Summary prep pending	7	2008
4	Pryor Creek (43E)	Examination in progress	7	2008
5	Milk River between Fresno & Whitewater (40J)	Summary prep pending	12	2008
6	Little Big Horn River (43O)	Summary prep pending	1	2009
7	Shoshone River (43N)	To be Examined	3	2009
8	Big Horn R below Greybull R (43P)	Summary prep pending	3	2009
9	Beaverhead River (41B)	Examination in progress	7	2009
10	Rosebud Creek (42A)	Summary prep pending	7	2009
11	Big Muddy Creek (40R)	Examination in progress	10	2009
12	Peoples Creek (40I)	Summary prep pending	12	2009
13	Arrow Creek (41R)	To be Examined	7	2010
14	Missouri R to Marias (41Q)	Examination in progress	7	2010
15	Flathead River (76LJ)	Examination in progress	12	2010
16	Milk River above Fresno (40F)	Summary prep pending	7	2011
17	Flathead R below Flathead Lake (76L)	Examination in progress	10	2011
18	Red Rock River (41A)	Examination in progress	3	2012
19	Cut Bank River (41L)	Summary prep pending	7	2012
20	St. Mary River (40T)	Summary prep pending	7	2012
21	Two Medicine River (41M)	Summary prep pending	8	2012
22	Yellowstone R below Powder R (42M)	To be Examined	8	2012
23	Marias River (41P)	Examination in progress	4	2014
24	Missouri R from Marias to Bullwacker (41T)	Examination in progress	5	2014
25	Missouri R between Bullwacker & Musselshell (40EJ)	To be Examined	3	2015
26	Bitterroot R, E side (76HA)	Examination in progress	6	2015

District Court Enforcement Actions

- Completed water court assistance on 23 streams 2005 season
- Completed water court assistance on 23 streams 2006 season
- Completed water court assistance on 26 streams 2007 season
- **Completed water court assistance on 30 streams 2008 season**
- Automated indexes are now in use

Expenses

YTD FY08:	Operating Costs	\$ 519,458.00
	Personnel services	<u>\$ 1,721,644.00</u>
	Total	\$ 2,241,102.00
	Budget	\$ 2,506,301.00

Note: Spending authority for \$150,000 used for HB22 fee collection in FY06 was not considered expendable for FY08, thus Adjudication FY08 ending balance. Funds revert into Adjudication account.

Billing System

- 108,000 bills mailed Dec. 27, 2005
- 18,552 2nd bills mailed March 1, 2006
- Estimated revenue generated \$6.2 million
- Revenue received **\$5.163 million** representing 93,737 invoices paid (in full /or part)

Appeals

- 5,002 Appeals received to date
 - o 3,030 appeals based on ownership;
 - o 1,972 appeals based on fee calculation
- **2771 appeals have been resolved to date (663 denied, 2108 resolved with fee correction)**
- Hired a temp to help resolve appeals

Ownership Records / Forms Received

(Form 608) Ownership Updates
(Form 602) Notices of Completion of Groundwater Development (wells 35gpm or less)

Fiscal Year	608 Counts	602 Counts
2008	4996	2870
2007	6098	3720
2006	13998	5948
2005	5414	3453
2004	4780	3053

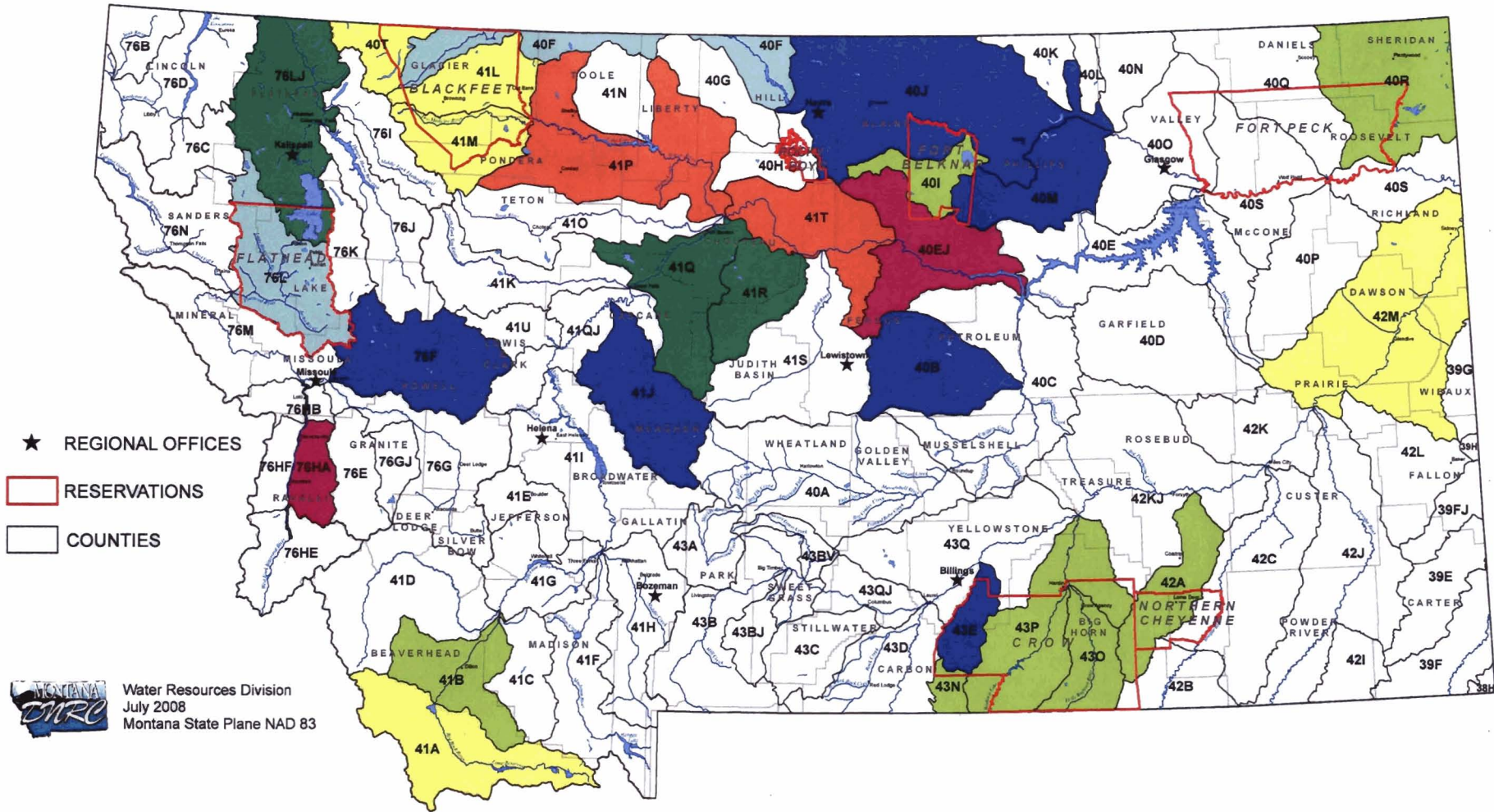
- **HB 39 Automate Ownership Updates effective July 1, 2008**
 - o **Working with DOR contractor, Tyler Inc, to add water right fields to DOR Orion database.**
 - o **Geocodes were loaded into DNRC database in June.**

- **Redesign of DOR Realty Transfer Certificate completed and posted on DOR web July 1, 2008**
- Purchase software for matching property geocodes with water right parcels in July. Match and upload geocodes to water right database by June 2008.
- DOR Orion property records system updated with water right fields by June 2008
- Public and realty industry education on HB 39 and new process Aug 2007 thru June 2008

Database Progress

- **Testing development of Reserved Water Right Compact water right records, automating annual reporting and implementing subordination provisions. Completion date – August 2008.**
- Moved Water Right Database to ITSD in May 2007.
- Automated water court objection list (120 hours) August 2007

Summary Report Projections



Current Summary Report Dates and Statistics

2008	2009	2010	2011	2012	2014	2015
Total: 26,521	Total: 9,515	Total: 11,556	Total: 5,397	Total: 10,045	Total: 6,762	Total: 5,382
Stock: 15,860	Stock: 5,786	Stock: 5,004	Stock: 2,823	Stock: 5,967	Stock: 4,911	Stock: 2,572
Domestic: 1,363	Domestic: 807	Domestic: 3,016	Domestic: 767	Domestic: 845	Domestic: 527	Domestic: 232
Mult. Domestic: 415	Mult. Domestic: 104	Mult. Domestic: 250	Mult. Domestic: 20	Mult. Domestic: 12	Mult. Domestic: 35	Mult. Domestic: 0
Irrigation: 4,520	Irrigation: 2,324	Irrigation: 2,437	Irrigation: 1,545	Irrigation: 2,249	Irrigation: 894	Irrigation: 1,953
Other Purpose: 4,363	Other Purpose: 494	Other Purpose: 849	Other Purpose: 242	Other Purpose: 972	Other Purpose: 395	Other Purpose: 625