

Repowering Montana: a Blueprint for Home Grown Energy Self-Reliance

Ben Brouwer
 Renewable Energy & Conservation Program Mgr.
 Alternative Energy Resources Organization (AERO)
 432 N Last Chance Gulch, Helena, MT 59601
 (406) 443-7272, bbrouwer@aeromt.org
www.aeromt.org

photo by Kevin Knight



LIGHT YOUR FARM
FOR ONLY **50¢ A YEAR!**
POWER OPERATING COST

32-VOLT 650-WATT GIANT
WINCHARGER
TURNS FREE WIND POWER INTO ELECTRICITY

\$15.00

RADIO POWER
WINCHARGER CORPORATION

New Worlds to Enjoy on the FARM

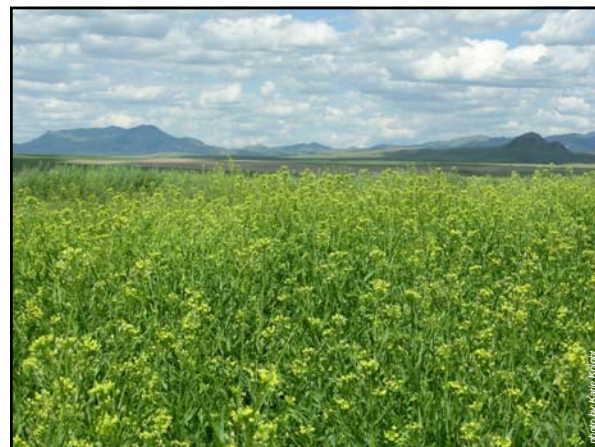
1750 COMPLETE

PIONEER Manufacturers of **RADIO WIND ELECTRIC**

FLASH!

PARIS DUNN CORPORATION
Clarks Summit, U.S.A.

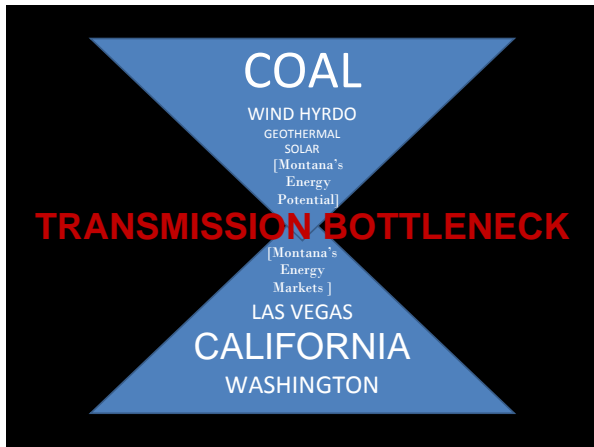
The HY-TOWER "SKYSCRAPER"
DUN-CHARGER





Demand side resource management =
CONSUMER CONTROL, ACTIVE CONSERVATION

**ENERGY CONSERVATION &
 ENERGY EFFICIENCY**



Cost Comparison Chart
LEED Platinum Certified
 "Home on the Range"
 vs.
 Conventionally built comparable new office building

	Conventional	LEED Platinum
Energy Cost per square foot	\$1.57	\$0.55
Construction Cost	\$1,728,190	\$1,403,400
Initial Savings	\$ --	\$324,790
10 year Savings	\$ --	\$425,870
30 year Savings	\$ --	\$796,969

Source: Western Organization of Resource Councils

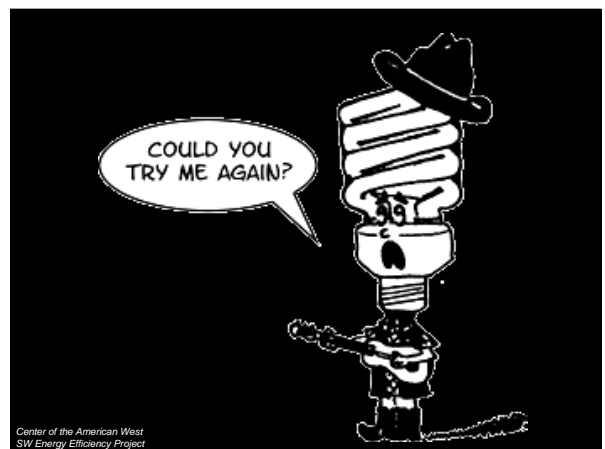




photo by Katie Knight

Repowering Montana: a Blueprint for Home Grown Energy Self-Reliance

www.aeromt.org



Ben Brouwer
Renewable Energy & Conservation Program Mgr.
Alternative Energy Resources Organization (AERO)
432 N Last Chance Gulch, Helena, MT 59601
(406) 443-7272, bbrouwer@aeromt.org
www.aeromt.org

photo by Katie Knight